


MILTON  TOYOTA

Real people. Great cars.

**IT'S BACK.
AND IT'S BIG.**

**TOYOTA
RED TAG
DAYS**

LEASE FROM **0%** **\$0** DOWN PAYMENT **\$0** SECURITY DEPOSIT

2018 COROLLA CE
INCLUDES

- ✓ PRE-COLLISION SYSTEM WITH PEDESTRIAN DETECTION
- ✓ LANE DEPARTURE ALERT WITH STEERING ASSIST
- ✓ BACKUP CAMERA

ALL THAT AND MORE
ALL-IN LEASE

\$50 [†] AT **0%** APR **\$0** DOWN PAYMENT

Weekly for 39 months with \$1,250 Customer Incentive* applied. Includes freight and fees. HST extra.



SE model shown.
2018 COROLLA



AWD Limited model shown.
2018 RAV4

2018 RAV4 FWD LE
INCLUDES

- ✓ 6.1" TOUCHSCREEN DISPLAY AUDIO WITH BLUETOOTH* CAPABILITY
- ✓ PRE-COLLISION SYSTEM WITH PEDESTRIAN DETECTION
- ✓ BACKUP CAMERA

ALL THAT AND MORE
ALL-IN LEASE

\$82 [†] AT **0.49%** APR **\$0** DOWN PAYMENT

Weekly for 39 months with \$1,500 Customer Incentive* applied. Includes freight and fees. HST extra.

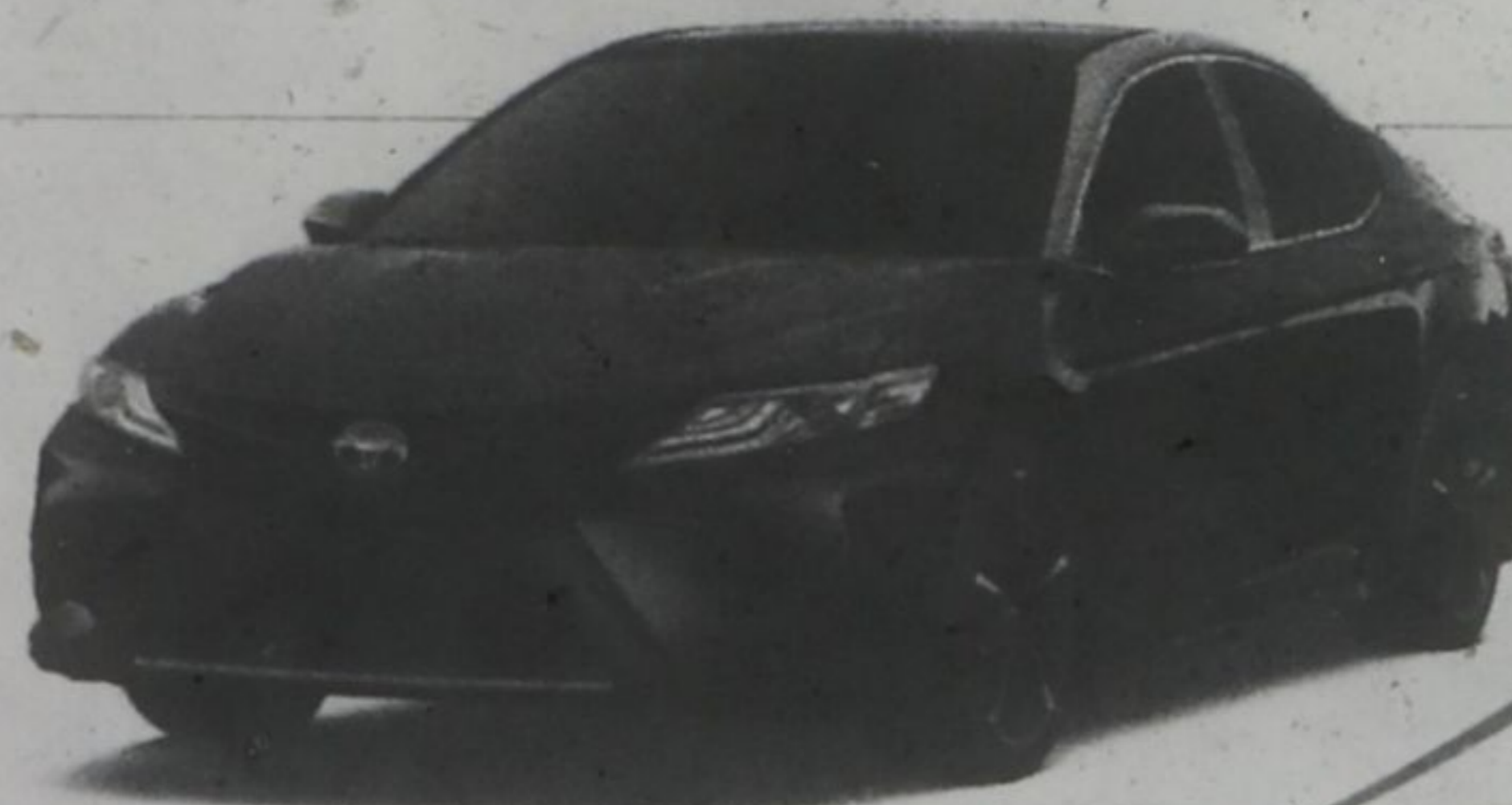
2018 CAMRY SE
INCLUDES

- ✓ ENTUNE 3.0 AUDIO WITH 7" DISPLAY SCREEN AND BLUETOOTH* CAPABILITY
- ✓ DYNAMIC RADAR CRUISE CONTROL
- ✓ HEATED FRONT SEATS

ALL THAT AND MORE
ALL-IN LEASE

\$88 [†] AT **1.49%** APR **\$0** DOWN PAYMENT

Weekly for 39 months with \$1,000 Lease Assist* applied. Includes freight and fees. HST extra.



XSE V6 model shown.
2018 CAMRY

Toyota
Safety
Sense

THAT'S REAL VALUE

MILTON  TOYOTA

905-875-1700 | miltontoyota.com
1245 Steeles Ave. East, Milton ON L9T 0K2

Industry Leading Loyalty Program
MyAutoRewards.ca



 Milton District
Hospital Foundation

MILTON TOYOTA IS A PROUD SUPPORTER OF THE MILTON DISTRICT
HOSPITAL FOUNDATION & COMMUNITY HEALTHCARE.

Special lease offers available from Toyota Financial Services on approved credit. †0.00%/1.49%/0.49% lease APR for 39/39/39 months on a new 2018 Corolla CE (Model BURCEMA)/2018 Camry SE (Model B11HSTA)/2018 RAV4 FWD LE (Model ZFREVTB) with an all-in lease of \$18,474/\$29,974/\$29,704 equals a weekly payment of \$50/\$88/\$82 for 169/169/169 payments with a \$0/\$0/\$0 down payment or trade equivalent when you apply the \$1,250/\$1,000/\$1,500 Customer Incentive and/or Lease Assist. Total lease obligation is \$8,494/\$14,868/\$13,836. All-in lease includes freight and fees (PDE, EHF, OMVIC fee and air condition tax, where applicable). HST, licensing, registration and insurance are extra. Milton Toyota may lease for less. Based on a maximum of 60,000KM/60,000KM/60,000KM. Additional KM charge of \$0.07/\$0.10/\$0.10 for excess kilometres, if applicable. *\$1,250/\$1,000 Customer Incentive is valid on retail delivery of a new 2018 Corolla CE (Model BURCEMA)/2018 RAV4 FWD LE (Model ZFREVTB). Offer is valid to retail customers (excluding fleet sales) when leased, financed or purchased from Milton Toyota. Customer Incentive will take place at time of delivery, include tax and will apply after taxes have been charged on the full amount of the negotiated price. Vehicles receiving Customer Incentives must be purchased, registered and delivered from April 3 to April 30, 2018. †\$1,000 Lease Assist on a new 2018 Camry SE (B11HSTA) is valid on Toyota retail delivery (excluding fleet sales) when leased from Milton Toyota. Lease Assist includes tax and will be applied after taxes have been charged on the full amount of the negotiated price. Vehicles receiving Lease Assist must be leased, registered and delivered from April 3 to April 30, 2018. †Dealer Fees may be added and may be comprised of administrative/documentation fees, VIN Etching, anti-theft products, cold weather packages or other fees. Fees may vary by Milton Toyota. For more information on vehicle features, please see Milton Toyota or Owner's Manual for details. Offers are valid from April 3 to April 30, 2018, and are subject to change without notice. All rights are reserved. Milton Toyota may lease or sell for less. Milton Toyota order/trade may be required, but may not be available in all circumstances. Please see Milton Toyota for full details.

NEWS

Town moves forward with mobility hub study plans

TIM WHITNELL
whitnell@metroland.com

Milton council has approved the undertaking of a study around the town's lone GO station, a report that is expected to play a major role in planning for land development intensification in that area.

The downtown GO site, an identified mobility hub, is the focal point of the study area.

It is located toward the eastern end of Milton's Urban Growth Centre as identified in the Growth Plan for the Greater Golden Horseshoe and in Halton Region's Official Plan.

The decision to go with winning contract bidder Toronto-based firm R.E. Millward & Associates Ltd., to undertake a Major Transit Station Area/Mobility Hub Study, was made at Monday night's town council meeting.

The study will cost almost \$332,000, including tax. The region is paying for the study.

That amount is being added to the existing approved budget of \$746,417 for the Town of Milton's Official Plan (OP) Review. The town will cover the cost of the original amount of the review.

Sixteen companies showed interest and five companies submitted contract bid proposals for the mobility hub study by the March 2 deadline.

A mobility hub study will provide the evidence and policy framework for the preparation of an area specific Secondary Plan, and also support the business case for two-way, all-day GO rail service in Milton, said the report's authors, Barbara Koopmans, the town's commissioner of planning and development, and Linda Leeds, the town's deputy chief accounting and financial officer.

Their report states that the study is a significant component of planning for land development intensification as required by provincial law.

The study is intended to provide policy direction and recommendations on land use, including building heights and density,

See STUDY, page 37