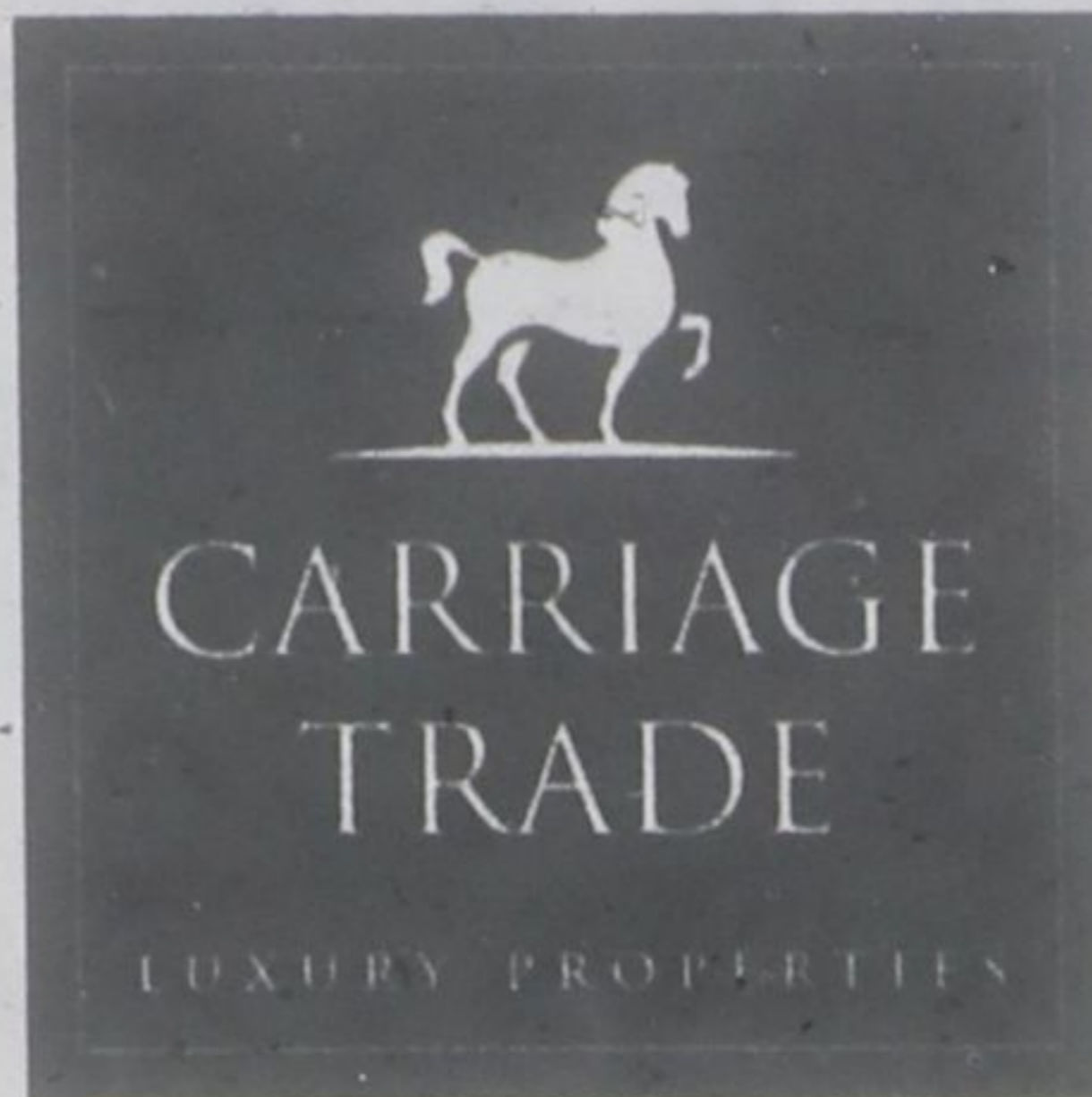


MILTON

905-878-8101

meadowtowne.com



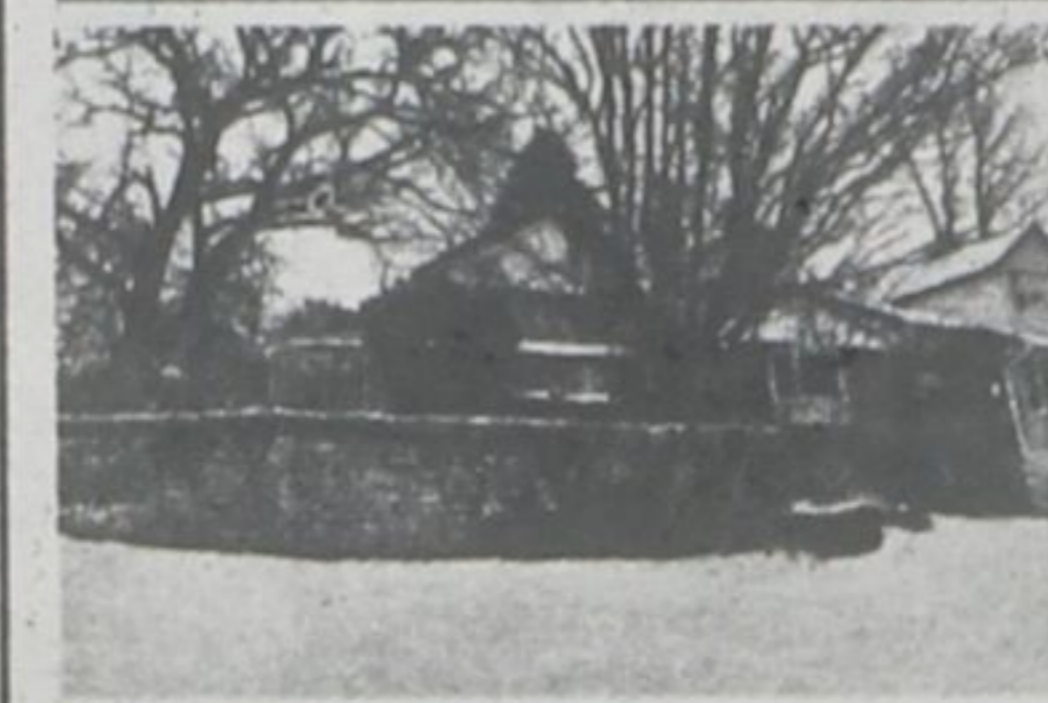
The Brazeau Team



Representatives, Joseph Brazeau, Virginia Brazeau, Jodie Near, Jennifer Brazeau-Barg
 Serving Town & Country: Milton, Campbellville, Halton Hills, Flamborough, Oakville, Burlington, Waterdown & Carlisle
 905-878-8101 • Fax: 905-878-8188



310 Harris St., Rockwood • \$876,000



Beautiful .74 Acre lot with walking paths down to the Eramosa River. Upgraded Century home which features the ability for extended family living with 2 separate entrances & a w/o basement, all at ground level. Enjoy the majestic, mature trees, fish pond, stone garden walls and long vistas of sunsets & nature. Municipal water & sewer. Quick commutes to the Action "Go" train, "Go" bus at Harris St/Hwy 7.

10501 Fifth Line, Milton • \$1,398,000



2.5 Acres. Brick home located on a cul-de-sac, just S/E of Brookville. 5764 sq. ft. (2882 sq. ft. on each level) of finished living space + a finished 20' x 12' man-cave or exercise room off the garage. MF has 4 bdrms, huge eat in kit o/l large FR with gas fp. Several walk outs to wrap around deck. L/L has 2nd kit, sunken LR w/ gas fp, bdrm & 2 baths. Separate 22' x 1' workshop/garage. 10' x 12' Shed. This home is adjacent to Conservation lands. Extremely quiet with no through traffic. Quick access to the 401 @ Guelph Line or Hwy. 25.

341 Mountsberg Road, Flamborough • \$5,900,000



78 Acres surround this spectacular estate property. A long tree-line lane leads to the custom Exec. Home. Open concept air flr. with gourmet kit, GR has vaulted ceilings, soaring windows & numerous w/o;s to decks with amazing views of the ponds & great sunsets. L/L completely finished for the extended family. Entertainment pavilion with wood burning FP & attached airplane hanger. 40' overhead door, kit, 2 baths & a studio. 2 storey bank barn. 2300 foot grass runway for your private plane.

1599 Fourth Line, Milton • \$1,150,000



1.14 Acres just north of Britannia Road & south of Louis St. Laurent. Part of the urban area of Milton. 3 bdrm & 2 bath home. Double detached garage & several out buildings. Don't miss this opportunity to own an acre in the fabulous Town of Milton.

11269 Guelph Line, Milton • \$1,450,000 (Commercial Zoning)



This bungalow is completely reno'd inside & out and set on 1 Acre in the Hamlet of Brookville. Home & commercial property Great Investment. Open concept design. New kit w/granite counters & SS appliances. Layout of main flr offers in-law potential. Finished bsmt.

Please call to find out how we can get your home sold
 1.800.514.3316 • www.brazeauteam.com

Kim Scott
 Sales Representative
 878-8101
 kimscott@royallepage.ca • www.kimscott.ca

DRURY PARK



Solid brick open concept bungalow with 2 beds and 2 baths located in popular Drury Park. The forest makes a beautiful back drop & adds privacy. Freshly painted throughout, new carpet, master, hardwood floors, main floor laundry, interior garage entry, large dining area, gas fireplace, cold storage, parking for 2 cars on drive. Lots of room to enjoy or close the door & go avel. A wonderful lifestyle awaits you. \$672,000

GREAT LOCATION & LOW CONDO FEES



are one bedroom plus den in walk to downtown location. Open concept layout with granite counter tops, breakfast bar, 9' ceilings, stainless steel appliances, ensuite laundry, owned underground parking, storage locker, private balcony. Large den could be used as a 2nd bedroom. Well managed building, close to GO, downtown and mall. Condo fees \$112 per month. \$419,900

Erika Bird
 SALES REPRESENTATIVE Cell:905-699-2477

ROYAL LEPAGE
 Meadowtowne Realty

A MUST SEE!
 164 COOKE CRESCENT, Milton
 Located On One Of The Largest Lots, This Beautiful 4 Bedroom Home Is Located On A Crescent. Includes Hot Tub, Heated Salt Water Pool And Many Many Updates! A Must See! Please Call Me For Your Personal Viewing.
 \$999,000
 OPEN HOUSE SUN 2-4

#209-700 CONSTELLATION, Mississauga
 Located At Mavis/Eglington In Mississauga. This South West View 2 Bedroom Corner Suite Is Over 1400 SF. Call Me For Your
 \$435,000
 OPEN HOUSE SAT 2-4
 www.buildingnewmemories.ca

Changing the way you experience real estate

The Amy
flowers
 TEAM

The housing market moves quickly. Visit:

AmyFlowers.ca

to view our current inventory today!

905.878.6232
 475 Main St. E. Milton, Ontario L9T 1R1



BARB CROWE BROKER
ALEX RUNDLE SALES REPRESENTATIVE
HUNTER OBEE SALES REPRESENTATIVE
COLLEEN SORENSEN SALES REPRESENTATIVE
 www.thehomehunter.ca | 905-878-8101

CONDO TOWNHOUSE IN CENTRAL LOCATION

OFFERED AT \$449,900

Attractive, affordable, three-bedroom condo townhome with mature evergreens behind. Features eat-in kitchen, separate dining room overlooking the large living room, main-floor laundry and finished rec. room. Close to all amenities.



GORGEOUS HARDWOOD FLOORS

OFFERED AT \$794,900

Spacious 4 bedroom home offering more than 2000 sf of living space. Open concept, with gas fireplace and large eat-in kitchen. Fantastic east end location walking distance to schools, shopping and parks.



LOCATION, LOCATION, LOCATION

COMING SOON

Spotless Maitamy Woodbine with view of the Park and only steps to both Elementary schools. Upgraded kitchen, freshly painted, private-balcony and 2 car parking in the drive. Call Hunter today.

