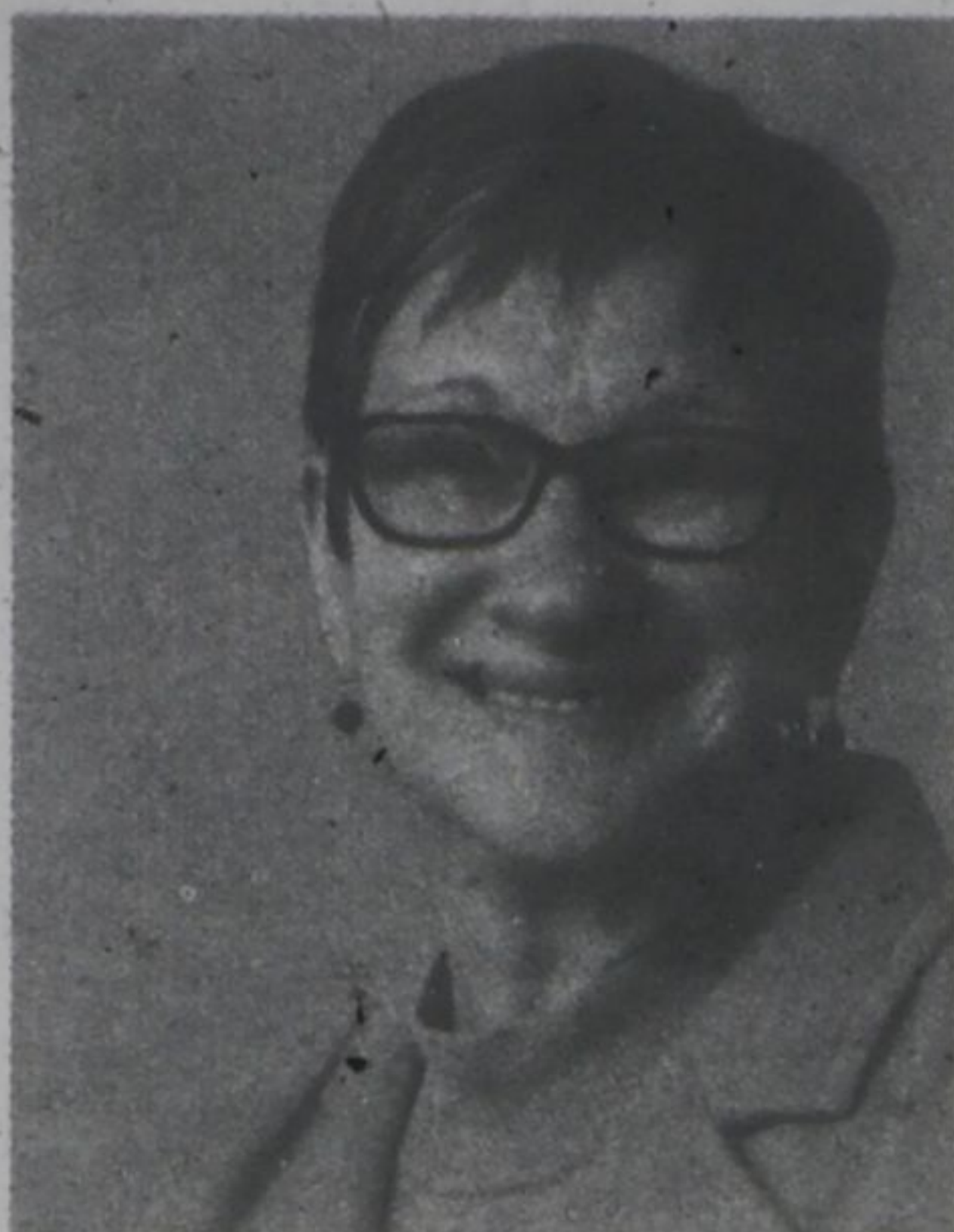


# LETTER FROM THE EXECUTIVE DIRECTOR



Halton Women's Place has been providing shelter services to abused women and their dependent children for 40 years. One would think that this achievement is laudable and a reason for celebration. We on the other hand believe that while it is a commemorative milestone it is not celebratory. In 1978, nine women from across Halton believed that the Region needed a shelter. Quite a feat in 1978! After substantial research and hard work a 12-bed shelter was opened in Milton Ontario. It was staffed by volunteers and a few paid staff. So what has changed in 40 years? What have we learned? Upon reviewing the Letter's Patent I can say that if we were writing them today the articles of incorporation would be very similar.

The physical plant has grown to 52 beds in two shelters, one in Milton and one in Burlington. Our staff numbers have gone up substantially as have our volunteers. Halton Women's Place now offers a multitude of programs beyond shelter services. Our Community Outreach programs include Transitional Housing and Support, Bridging Families in partnership with CAS, Court Support, Second Stage Housing, and last but certainly not least we offer a Public Education Program that provides lessons on healthy relationships to school aged children and youth. Our community partners include ROCK (Reach Out Center for Kids), Halton Regional Police Services, Thrive Counselling Services, Halton Children's Aid, Public Health and the Region of Halton Housing Services.

One would think that with all of these services and partnerships we would see a vast difference in the numbers of women looking for services. Unfortunately, this is not the case. To date our capacity this year has been at or near 100 per cent and our community outreach services are equally high. Despite the progress made in women's rights and the fact that we are equal in the eyes of the law, many women continue to experience violence at the hands of the men they love most.

And so we continue, another 40 years...perhaps. We can only hope to bring awareness to gender based violence and stop this scourge on women and children. Violence has no place in civil society.

Throughout 2018, Halton Women's Place will launch several campaigns which will bring the issue to light. All will be under the umbrella of Halton Women's Place "Ruby Campaign". On Saturday, Feb. 24 Halton Women's Place will host our "Ruby Gala" to commemorate 40 years of service to the Halton community.

"Because a Life Without Violence is the Only Life To Live"

*Diane Beaulieu*

Halton Women's Place Executive Director  
Diane Beaulieu

## ABUSE HAS NO BOUNDARIES ...

Thank You



Halton Women's Place

for all you do in our community.

LISA RAITT, MP  
Milton

86 MAIN STREET EAST, MILTON, ON

905.693.0166

LISA.RAITT@PARL.GC.CA • LISARAITT.MP.CA



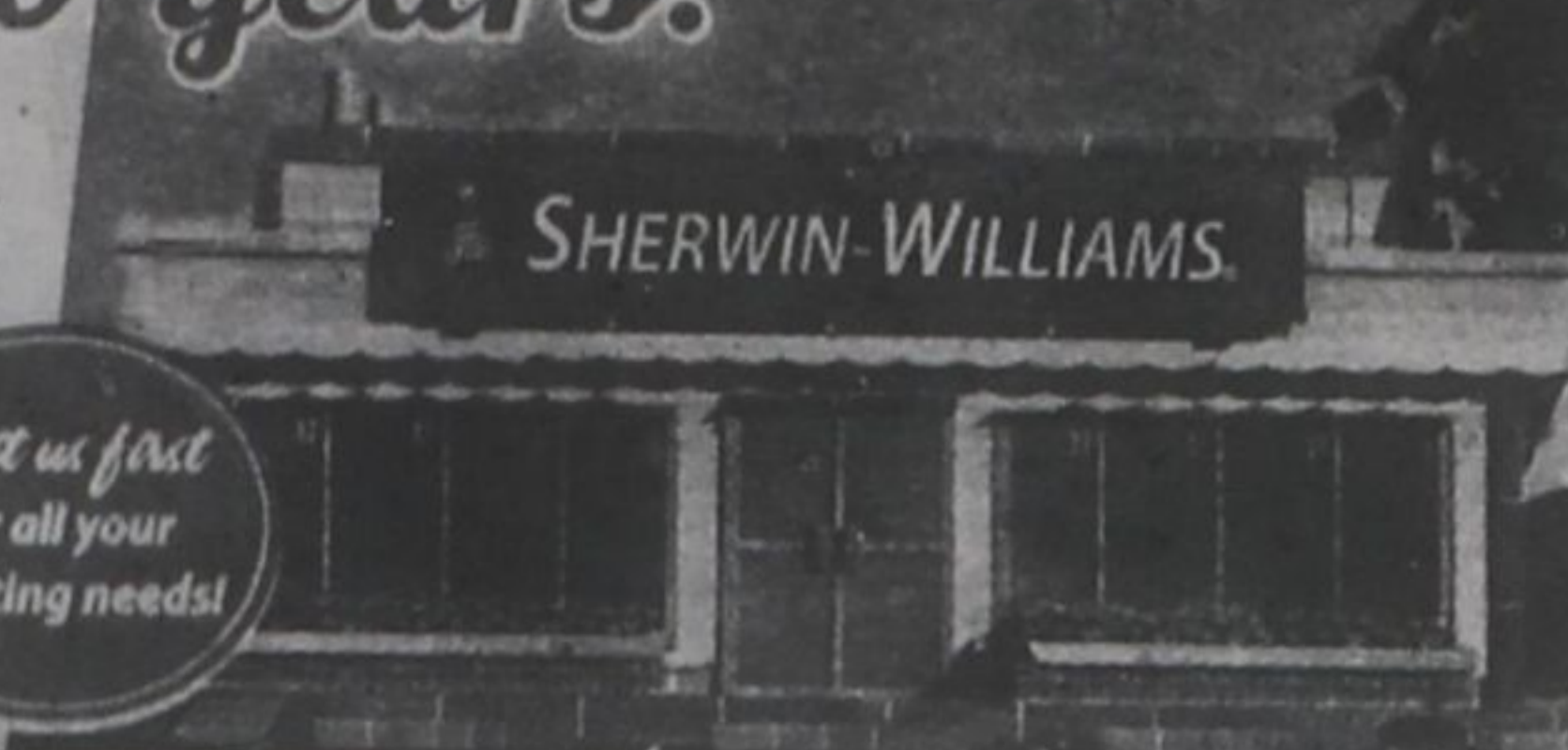
Thank you  
Halton Women's Place for  
serving the Milton Community  
for 40 years.

875 Main St. E. (@Thompson)

Milton • 905-878-1114

sherwin-williams.com

Visit us first  
for all your  
painting needs!



## Single Women & Real Estate

Increasingly women are going it alone in real estate, buying homes on their own or with friends or relatives. Spurred on by a healthy real estate market and new mortgage options, single women have become a powerful demographic in the real estate market. And why not — career-driven, independent and financially savvy, more women than ever before are eager to experience the pride of homeownership.

It's a changing demographic world. Many women today marry later — or not at all;

post-secondary participation and graduation rates are very high, women earn more than ever before; and they may become single multiple times in their lives. And since real estate has proven to be a very strong long-term investment, it's smart financial sense to direct monthly payments towards building equity.

Women are getting into the market on their own or in combination with someone else. Those who buy together tend to have similar interests or lifestyles. For some, living with

others may also offer more security than living alone. But, not all women are looking to share accommodations; many simply enjoy the tranquility of living on their own.

Women are also banding together to invest in real estate beyond their primary residence, either in small groups or investment clubs, expanding their portfolios to include real estate along with their stock and bond portfolios. It's a great place to start.



John Cavan, AM  
Ageqt

905-878-7213



MA Mortgage Architects  
Brokerage # 12728  
14 Martin St., Milton  
Head Office:  
5675 Whittle Rd.  
Mississauga, On L4Z 3P8