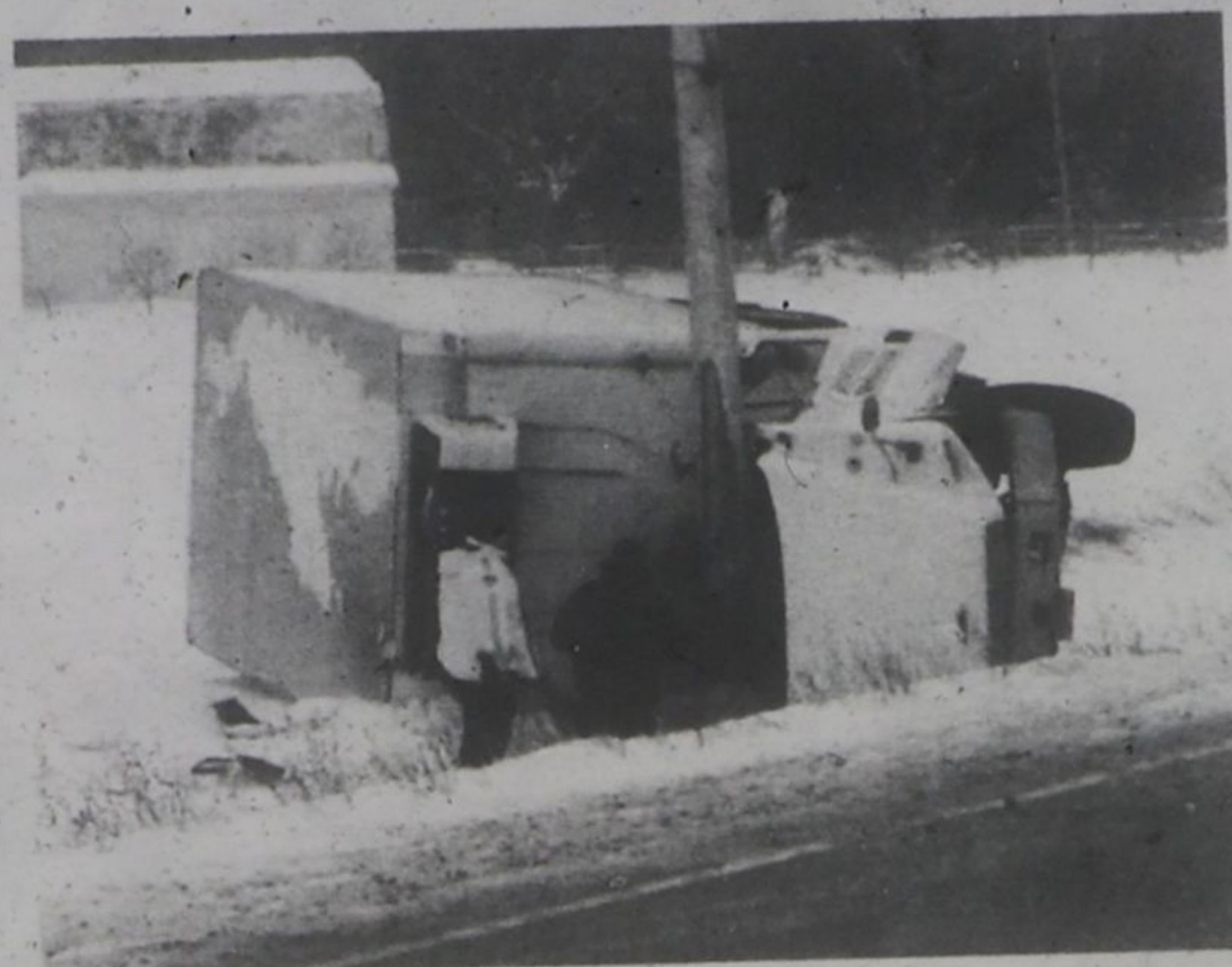




I SAW A COYOTE IN HALTON. NOW WHAT?

Seeing a coyote can be a wonderful, exciting interaction with the natural world around us, even in the urbanized areas of Halton, writes Coyote Watch Canada and the Association for the Protection of Fur-Bearing Animals. Many people have a reasonable apprehension of coyotes, particularly if they've endured conflict or heard about conflict locally. What, then, is the appropriate response to seeing a coyote? Visit online at the link listed below to find out.

bit.ly/isawacoyote



FATAL TRUCK CRASH IN ACTON

A commercial straight truck driver was killed early Tuesday in Acton after his vehicle left the roadway and rolled into a hydro pole. The single-vehicle crash occurred on Hwy. 7.

bit.ly/actonfatalcrash



BEYOND THE PAGES

From breaking news to multimedia features, go beyond the newspaper pages and discover all that the *Milton Champion* has to offer online.

www.INSideHalton.com

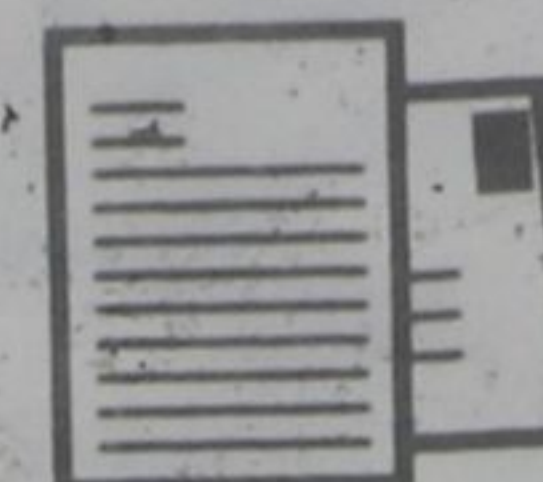


VIEW OUR
PRINT EDITIONS

CONNECTED TO YOUR COMMUNITY

InsideHalton.com

burlington • milton • oakville



NEWSLETTER

headlines delivered to your inbox daily

insidehalton.com/newsletter



DRIVER IN BURLINGTON CLOCKED GOING 65km/h OVER SPEED LIMIT WITH SMALL CHILDREN ON BOARD: POLICE

Police say they clocked a vehicle allegedly travelling 165 km/h on Hwy. 407, south of Brant Street Dec. 28. Two children were passengers in the vehicle driven by a 39-year-old Niagara Region man.

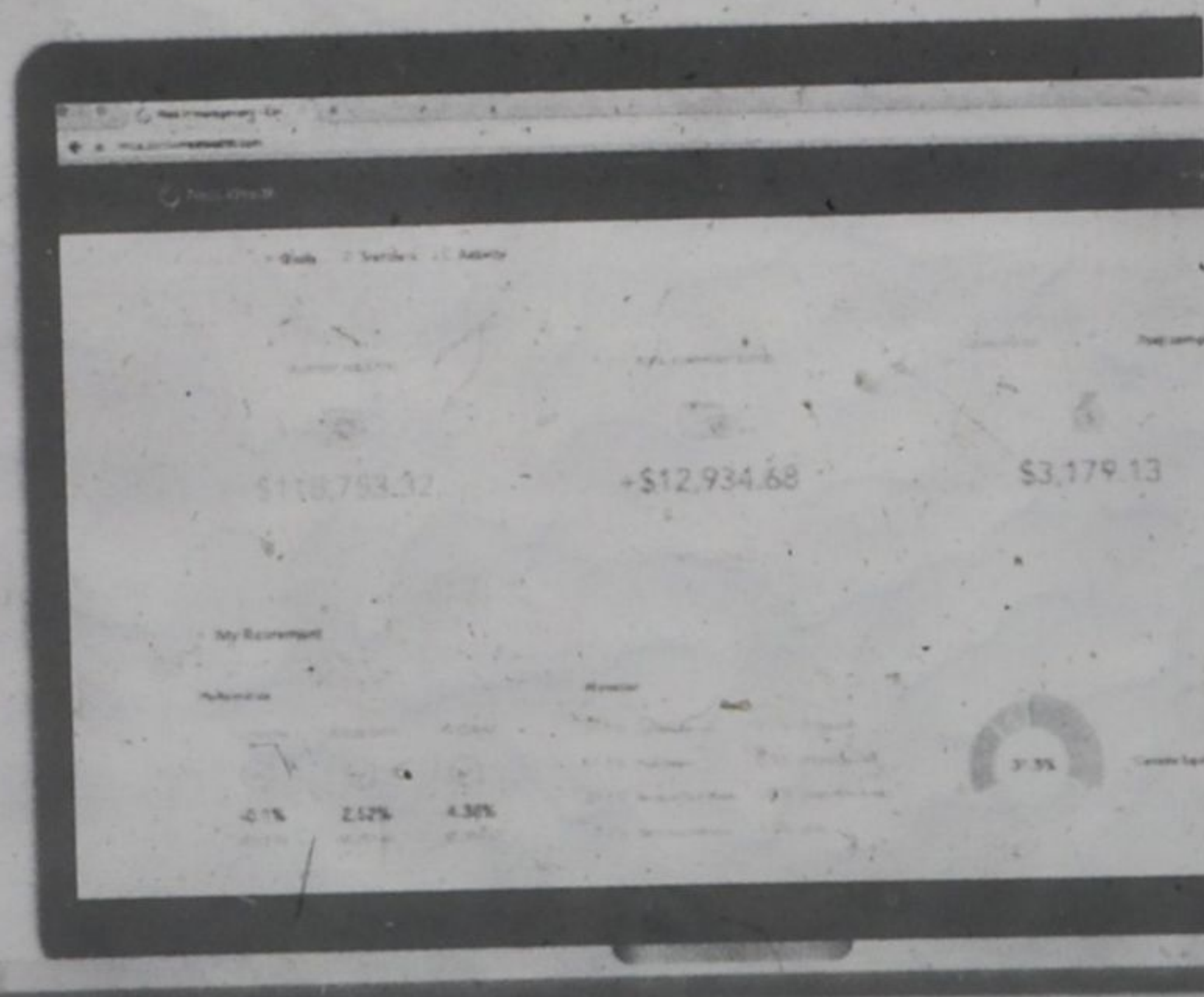
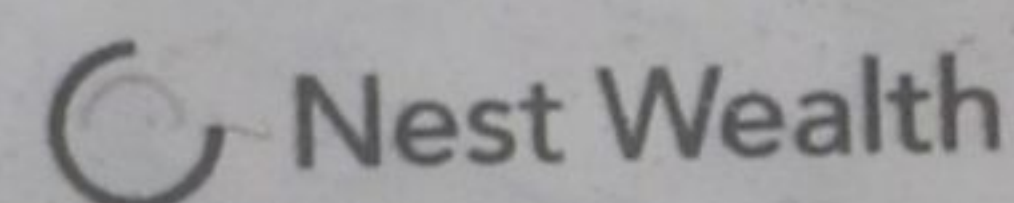
bit.ly/165on407

Join Canada's first subscription based investing service

Traditional and hard to understand investment fees could be costing you up to 30% of your potential wealth.*

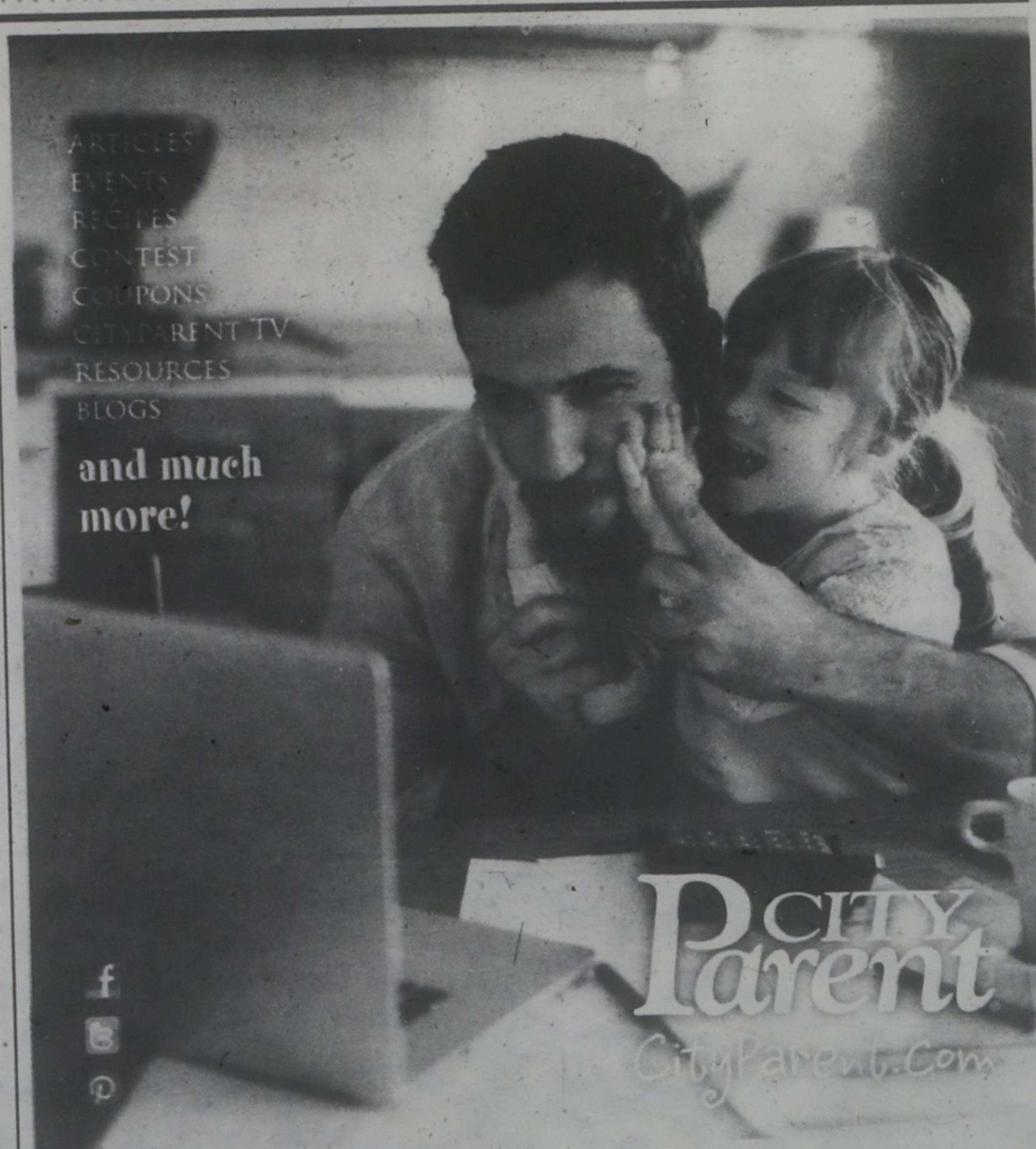
Learn why Canadian are changing the way they invest their money.

Visit nestwealth.com



- ARTICLES
- EVENTS
- RECIPES
- CONTEST
- COUPONS
- CITY PARENT TV
- RESOURCES
- BLOGS

and much more!



DCITY Parent
CityParent.com



*Comparison of investment fees for a \$100,000 investment over 10 years. Fees are based on a 7% annual return. Fees are not guaranteed. Fees are based on a 7% annual return. Fees are not guaranteed. Fees are based on a 7% annual return. Fees are not guaranteed.