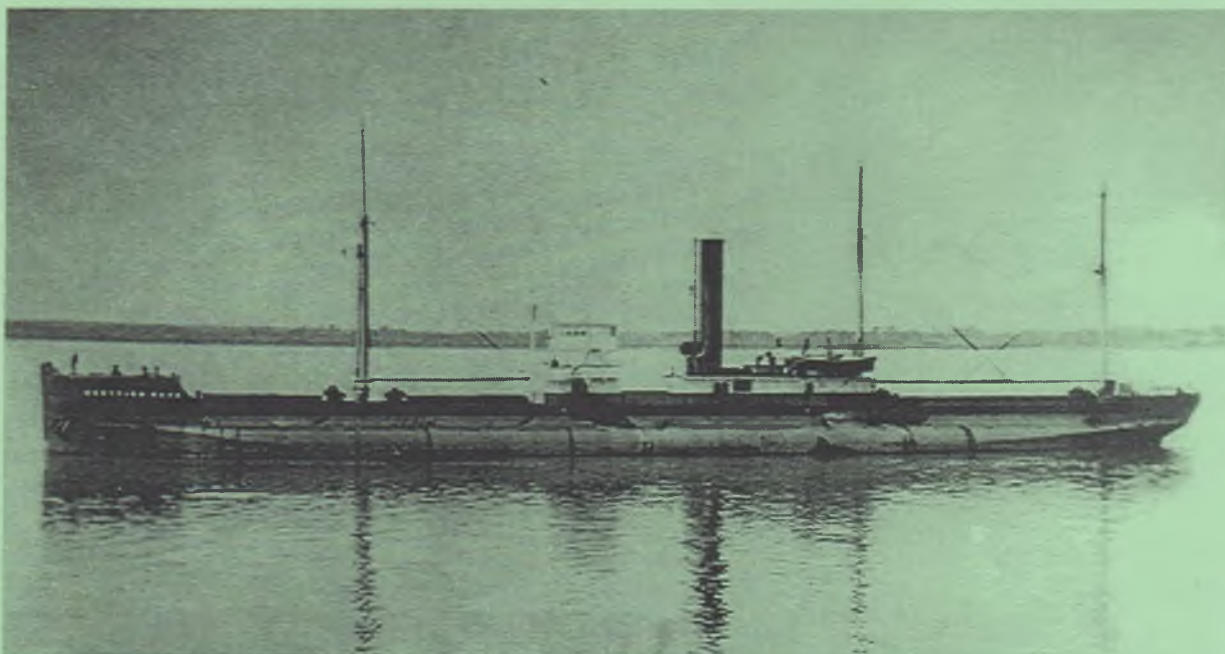
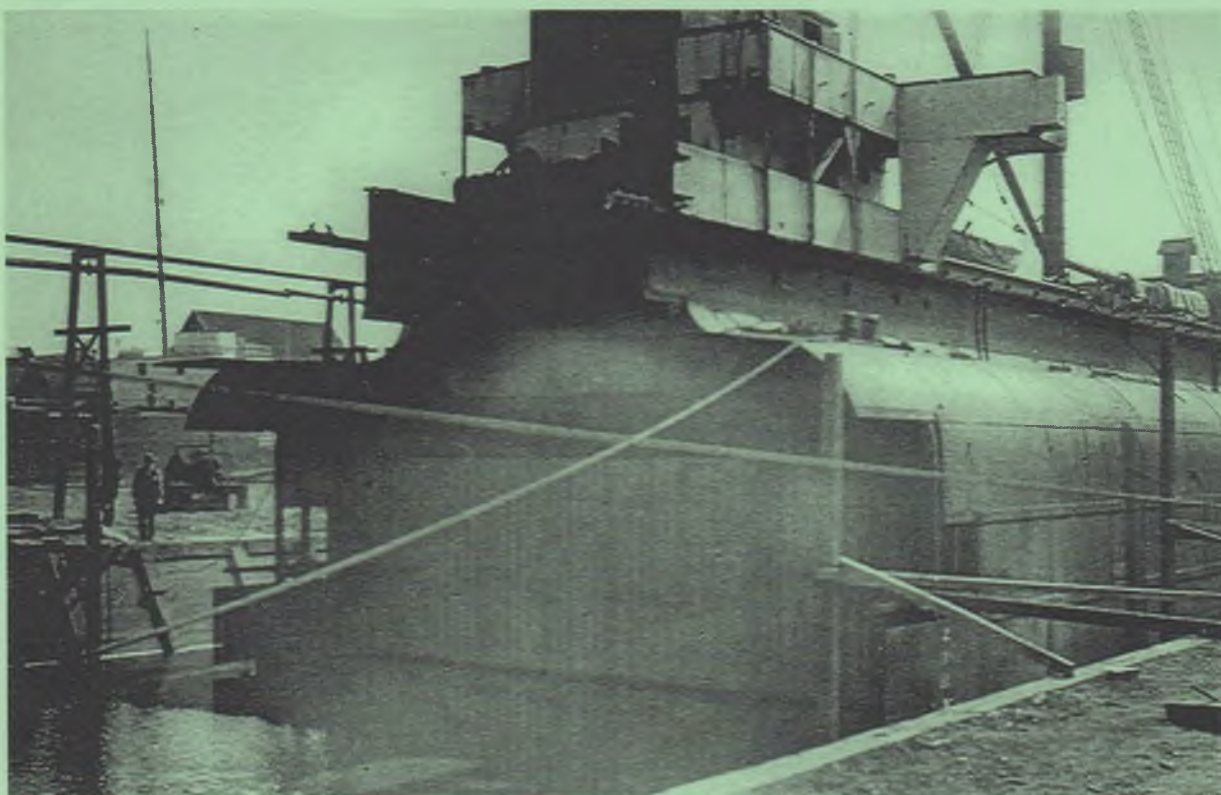


GREAT LAKE MEMORIES
- SCOTTISH HERO Revisited -



Photographs of the turret steamer SCOTTISH HERO with her upper pilothouse are rare indeed, but here is one, provided for us by Ralph Roberts, of Saginaw, Michigan. Date and location, unfortunately, are not known.



When we ran the story of SCOTTISH HERO in the December issue, we said that we would like to see a photo of her cut apart for either of her canal transits. Ralph Roberts has sent this one of her forward end bulkheaded. Is this Ashtabula in late April 1915? We think it is Buffalo in June 1906. Why? Her pilothouse is varnished, but it was painted white in 1915. And in the background is a Gilchrist Transportation Co. steamer, and the entire Gilchrist fleet had been sold off long before 1915. Comments anyone?

* * * * *