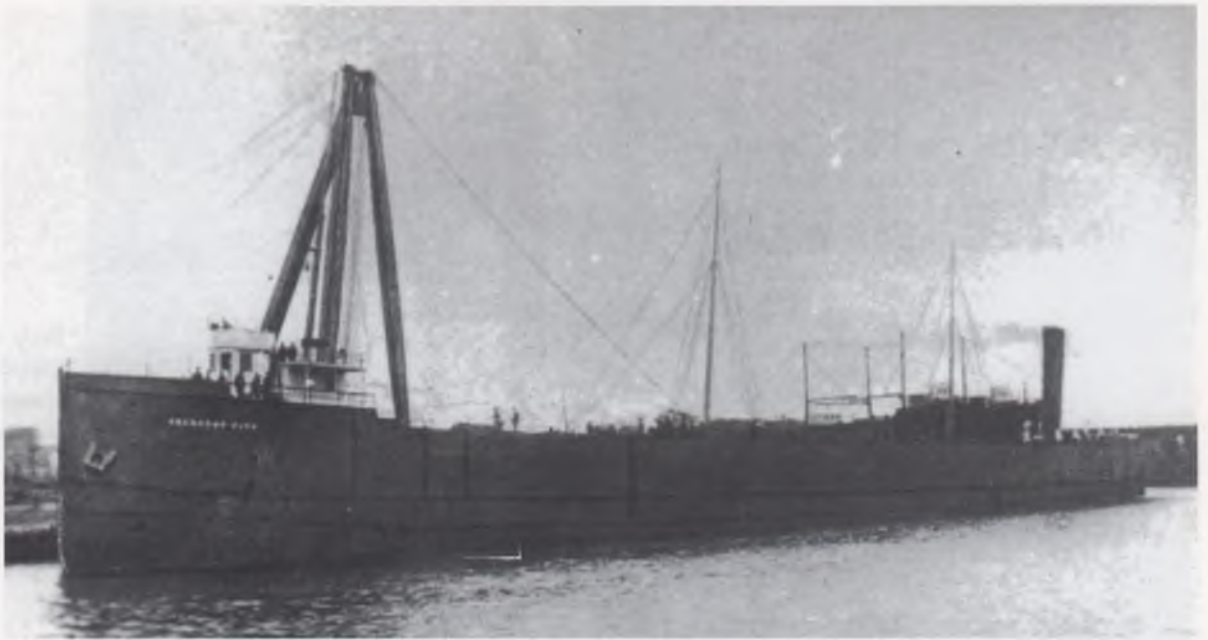


It is 1897 and
CRESENT CITY is
fitting out under the
shearlegs at her
builder's yard at
Chicago.
Photo courtesy
Ralph Roberts.



A Pesha photo caught
MAUNALOA down-
bound in the St. Clair
River off Marine City in
the World War One era.



Capt. W. J. Taylor took this view of MAUNALOA from his lighthouse tender in the Detroit River circa 1940.