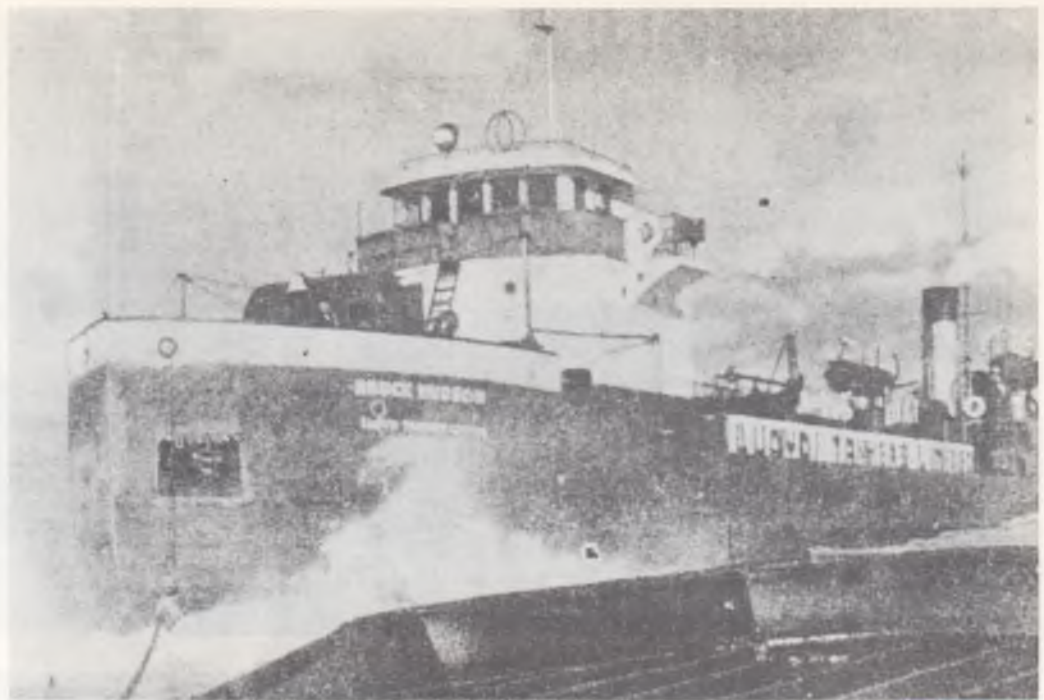


A press photo, courtesy Lorne Joyce, shows BRUCE HUDSON in tow of ATOMIC after her 1947 escapade on Lake Erie.



The date is October 22, 1955, and COASTAL CLIFF is upbound in the Welland Canal near Dain City in a photo by Jim Kidd.



Photo by J. H. Bascom caught COASTAL CLIFF outbound at the Toronto Eastern Gap on September 20, 1959.