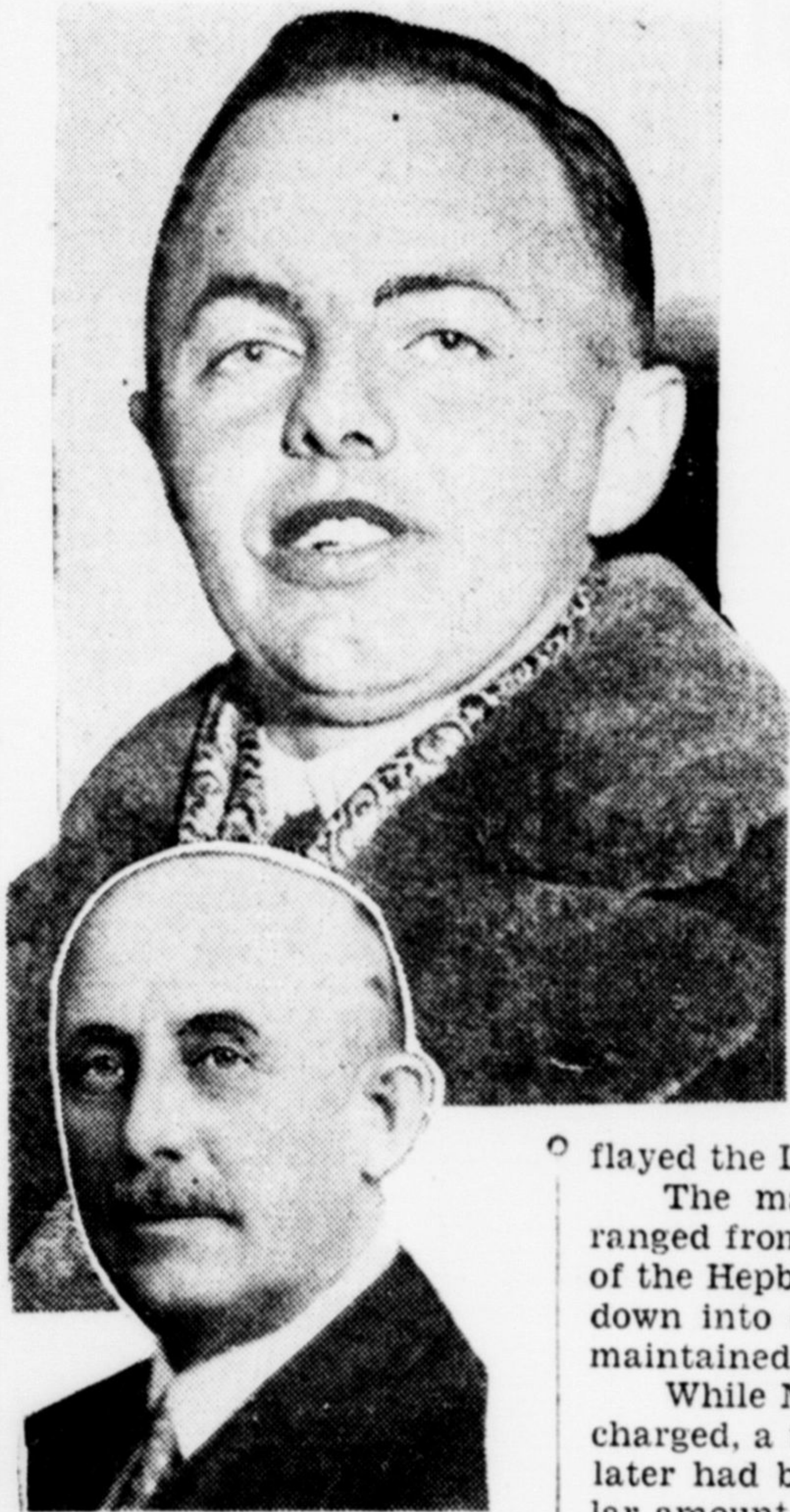


February 27

Thieving Treasury Official Bonused by Old Government, Says Hepburn in Legislature

LEADERS IN COMBAT



Premier Hepburn (upper picture) and Hon. George S. Henry (lower picture), who debated in the Legislature yesterday.

Over \$2,000 Taken From Dismissed Officer's Superannuation Fund as Restitution, He Charges, Restored by Henry Authorization

HENRY MOVES AMENDMENT VOICING NO CONFIDENCE

FINANCE, liquor problems and Civil Service dismissals provided a battleground, and Ontario's political Leaders waged war on it yesterday.

To packed galleries at Queen's Park Prime Minister Mitchell F. Hepburn laid down official figures for his economies.

On the offensive, he levelled at the Opposition and Hon. George S. Henry charges that their pre-election statements were misleading and their financial figures juggled.

To Hon. George S. Henry the sins of the Liberal Government were centralized in liquor administration and Civil Service dismissals. He was backed in a third speech of the day by Hon. Leopold Macaulay, who

played the Liberals for their statements just before election.

The major motifs were but half the story. Debate ranged from the Mowat and Whitney regimes to the results of the Hepburn Commissions. On twenty occasions it broke down into cross-fire "across the floor"—a guerrilla battle maintained largely by Mr. Henry and Mr. Hepburn.

While Mr. Henry was Prime Minister, Premier Hepburn charged, a thieving Treasury official had stolen \$2,500, and later had been recipient of Government grants to a similar amount.

"He stole the money," said the Premier. "There was no question about that."

The money, Mr. Hepburn said, had been taken from his superannuation fund to make restitution. But a 1933 Order-in-Council was passed giving the man \$2,000 for special services. Another warrant was passed for \$500 payable to the same man.

Mr. Henry questioned the date, and protested that it occurred during the interregnum before he took over the Treasury from the late Hon. E. A. Dunlop.