

\$

BIG \$ DAYS

\$

**GREATER VALUES!
HIGHER QUALITY!**

**BUY HERE
and Get More
Value for
Your Money!**

COOKED

READY TO EAT

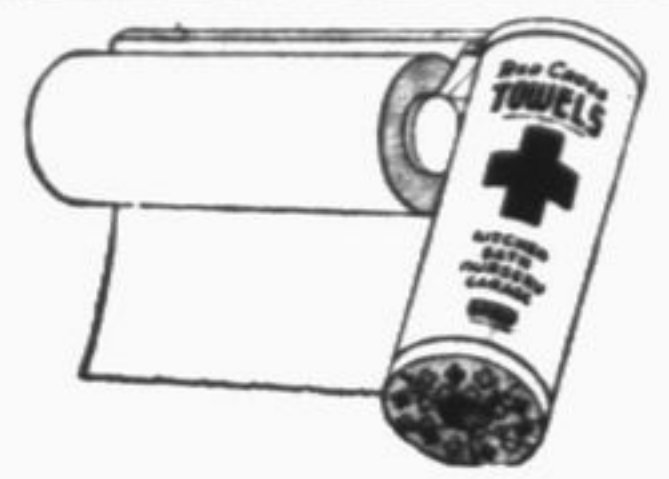


H A M!!!

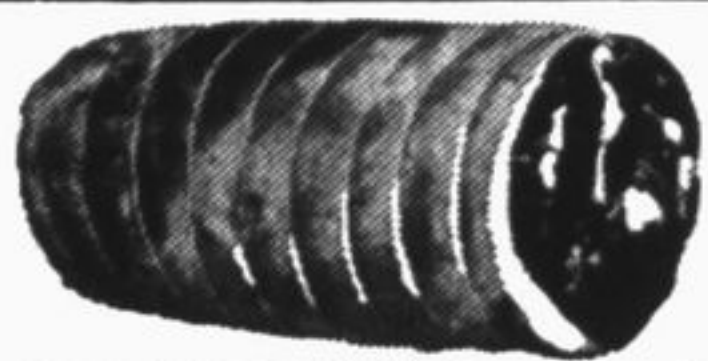
Whole Picnic
Average weight
5 lbs.
Whole Ham .. \$1.00

CANNED VEGETABLES NEW PACK

TOMATOES Whole, Red Ripe Solid Pack Glass Jar Brand No. 2 1/2 can 6 for \$1.00	Small Early Garden PEAS Glass Jar Brand No. 2 cans 7 for \$1.00	Tiny or Midget PEAS Glass Jar Brand No. 2 cans 6 for \$1.00	Colonial White ASPARAGUS TIPS Prince's Finest No. 1 Square 3 for \$1.00	Colonial Green Tipped Asparagus Tips Prince's Finest No. 1 Square 3 for \$1.00	Early Garden ASPARAGUS Prince's Finest No. 2 cans 4 for \$1.00	Shooting Beets, Carrots, Peas or Mixed Vegetables 1-lb. glass jar 8 for \$1.00	Whole Kernel Golden Bantam CORN TIDBITS Glass Jar or Snider's, 12-oz. vac. can 9 for \$1.00
Wia. State Golden Bantam or SW. CORN Cream Style No. 2 cans 10 for \$1.00	TOMATOES Indiana Hand Packed No. 2 1/2 cans 9 for \$1.00	Garden Fresh Green LIMA BEANS Glass Jar Brand No. 2 cans 6 for \$1.00	New POTATOES Small Whole Peeled Prince's Finest or Richelieu No. 2 cans 8 for \$1.00	Mammoth Mellow SUGAR PEAS Richelieu Brand No. 2 cans 6 for \$1.00	Red Kidney BEANS Fancy Large No. 2 cans 10 for \$1.00	Fresh Garden SPINACH Glass Jar Brand No. 2 1/2 cans 5 for \$1.00	SUCCOTASH Glass Jar Brand No. 2 cans 6 for \$1.00
Sliced BEETS Glass Jar Brand No. 2 cans 10 for \$1.00	Shooting BEETS Snider's No. 2 cans 10 for \$1.00	SAUER KRAUT Glass Jar Brand No. 2 1/2 cans 9 for \$1.00	MUSHROOMS Pieces and Stems 2-oz. can 10 for \$1.00	Golden Bantam or Country Gentleman CORN Glass Jar Brand Cream Style No. 2 cans 8 for \$1.00	Red Kidney Baked Beans with Pork Friend's 25-oz. can 7 for \$1.00	Brick Oven Baked Pea Beans with Pork B & M 25-oz. Glass Pot 5 for \$1.00	SWEET POTATOES Glass Jar Brand No. 2 1/2 can 5 for \$1.00



RED CROSS TOWELS
10 rolls \$1.00
RED CROSS or A.P.W. TOILET TISSUE
20 rolls \$1.00



DOLLAR DAYS MEAT SPECIALS

CHICKENS for frying; lge. size; ea. \$1
 PORK ROAST, young 5 lbs. \$1
 POT ROAST, native beef 4 lbs. \$1
 BACON—Hickory smoked 4 lbs. \$1
 OX TONGUE—fresh or pickled; ea. \$1
 FINEST CALVES' LIVER, 1 lb. and 2 lbs. of BACON All for \$1
 LOBSTER MEAT—Eastern fancy; Regular \$1.75 value 1 lb. \$1
 FILLET OF SOLE—no waste, no bone .. 3 lbs. \$1
 2 lbs. Smoked Boneless Fluman Haddie; 1 pt. Fancy Scallops; 1 lb. Pure Lard; all for \$1

DOLLAR DAYS LIQUOR SPECIALS

(Sold only at our Lake Forest Store)
 BEAULIEU VINEYARD WINES — Sherry, Port, Burgundy, Dry Sauterne, Claret, Moselle or Rhine— \$1.00
 A real value; large bottles
 FRENCH or ITALIAN VERMOUTH—Cinzano \$1.00
 \$1.39 Value
 Four-year-old KENTUCKY STRAIGHT BOURBON WHISKEY \$1.00
 Regular \$1.25 value; pints
 IMPORTED FRENCH RED CLARET or GRAVES WHITE SAUTERNE WINE. \$1.00
 Large Bottles. Regular \$1.75 value
 IMPORTED CHAMPAGNE — 1929 Vintage. \$1.00
 Regular \$1.95 value. Pint
 IMPORTED TAWNEY PORT WINE \$1.00
 Regular \$1.95 value. Large bottle
 FINEST IMPORTED COGNAC— 10 years old; Regular \$1.95 value. \$1.00
 2 pocket-size bottles for
 SCHLITZ BEER 10 for \$1.00
 in cans

S and W FINE FOODS sale!

SARDINE FILLETS
Smoked or Natural
8-ounce cans 8 for \$1.00
HEARTS OF CELERY
No. 2 cans 3 or \$1.00
STRINGLESS BEANS — Asparagus
style No. 2 cans 4 for \$1.00
SLICED YAMS
Porto Rican variety—in heavy syrup
No. 2 cans 5 for \$1
Royal Anne CHERRIES
No. 1 1/2 tall can 5 for \$1
 No. 2 1/2 can 3 for \$1
SALAD TOMATOES — Peeled
No. 2 1/2 cans 4 for \$1.00
FREESTONE PEACHES—
Golden Delicious Peeled Halves.
No. 2 1/2 cans 3 for \$1.00

SOUPS, SAUCES, OLIVES, PICKLES

Consomme Madeline, Consomme Arcique or Chicken 7 for \$1
 Consomme White Rose — 13-ounce cans 8 for \$1
 Soups—Black Bean, Mushroom, Chicken, Asparagus, Pea, Etc.—Crosse & Blackwell's. All kinds; 1-lb. cans 6 for \$1
 Catsup — Snider's or Libby's 14-oz. bottles 4 for \$1
 Colossal Ripe Olives—San Irano; pint cans 4 for \$1
 Mammoth Green Ripe Olives—Sylmar. Pint cans 4 for \$1
 Pimiento Stuffed Olives—No. 5 tall bottles 7 for \$1
 Spanish Green or Pimiento Stuffed Olives—No. 5 squat jar 4 for \$1
 Pin Money Pickles — Sweet Mixed, India Relish, Sweet Hot Stuff, Sweet Cucumber Chips, Sweet Cucumber Slices, Sweet Cauliflower, 12-oz. jars 4 for \$1
 Old Fashioned Pickles—Monarch, Sliced, 6-oz. jars 15 for \$1.00
 Old Fashioned Chili Sauce—Snider's, 12-oz. bottles 5 for \$1.00
 Pique Sauce, for flavoring gravies, soups, etc. Reg. 39c 4 for \$1.00

CANNED JUICES

Pineapple Juice—Glass Jar Brand, No. 1 tall cans 11 for \$1
 Grapefruit Juice—Prince's Finest, No. 2 cans 10 for \$1
 Orange Juice, Pure California—Richelieu, No. 2 can 8 for \$1
 Grape Juice, Unsweetened—Premier, pint bottle 6 for \$1
 Tomato Juice—Glass Jar Brand, No. 1 tall can 14 for \$1
 Grape Juice, Unsweetened—Premier, quart bottles 3 for \$1
 Red or Yellow Tomato Juice—Welch's, No. 5 can 4 for \$1
 V-8 Vegetable Juice Cocktail, No. 1 can 10 for \$1

SOAPS, WASHING POWDER, ETC.

Perk Granulated Soap—goes farther—4 lge. pkgs. and 4 10c pkgs. All 8 for \$1
 Sweetheart Toilet Soap—The soap that agrees with your skin. 18 bars \$1
 Camay Soap. The Soap of Beautiful Women. 18 bars \$1
 Lincio Wash, Bleach, Deodorizer and Disinfectant. (No bottle deposit) Quart bottles 5 for \$1
 Sunbrite Cleanser—Cleans easier, won't scratch 25 for \$1
 Cameo Cleanser—The white clean smelling cleanser 13 for \$1
 Brillo Soap Pads or Brillo Cleanser—Large packages 6 for \$1
 Columbia Ammonia, Quart Bottles 6 for \$1
 American Family Soap—large bars 18 for \$1
 Ivory Soap—large bars 12 for \$1

THE FINEST IN CANNED FRUITS

Yellow Cling Peaches—Halves or Sliced, Glass Jar Brand, No. 2 1/2 cans 5 for \$1
 Elberta Freestone Peaches—Halves, Glass Jar Brand; No. 2 1/2 cans 4 for \$1
 Bartlett Pears—Halves, Glass Jar Brand; No. 2 1/2 cans 4 for \$1
 Sliced or Crushed Pine apple—Glass Jar, Libby or Del Monte; No. 2 1/2 cans 4 for \$1
 Whole Peeled Apricots—Glass Jar Brand, No. 2 1/2 cans 4 for \$1
 Fruits for Salad—Libby's Black Label, No. 2 1/2 can 4 for \$1
 DeLuxe Plums—Glass Jar Brand; No. 2 1/2 cans 5 for \$1
 Kadota Breakfast Figs—Glass Jar Brand, No. 2 1/2 cans 4 for \$1
 Royal Anne Cherries—Glass Jar Brand, No. 2 1/2 cans 4 for \$1
 Fruit Cocktail—Glass Jar Brand, No. 2 1/2 can 4 for \$1
 Peeled Apricots—Halves—Glass Jar Brand, No. 2 cans 5 for \$1
 Red Raspberries—Glass Jar Brand, No. 2 cans 4 for \$1
 Yellow Cling Peaches—Halves or Sliced, Glass Jar Brand; No. 2 cans 7 for \$1
 Bartlett Pears—Halves—Glass Jar Brand, No. 1 tall 7 for \$1
 Sliced Pineapple—Glass Jar Brand, No. 1 1/4 flat 7 for \$1
 California Fruit Cocktail, No. 1 tall can 8 for \$1
 New York State Applesauce, No. 2 can 11 for \$1

CANNED SEA FOODS

Imported Portuguese Boneless and Skinless Sardines 7-ounce cans 4 for \$1
 Imported Belgian Sardines in Olive Oil 3 1/2-ounce cans 8 for \$1
 Crabmeat — Richelieu 1/2-pound cans 3 for \$1
 Jumbo Shrimp—Blue Plate Brand, No. 1 cans 7 for \$1
 White Meat Tuna White Spray, 1/2-pound cans 5 for \$1
 Fancy Red Alaska Salmon 1-pound flat can 3 for \$1
 Fancy Red Alaska Salmon 1-pound tall can 4 for \$1
 Sockeye Salmon Steaks—Del Monte. 1/2-pound cans 5 for \$1
 Fancy Rock Lobster—Romar Brand. 1/2-pound cans 4 for \$1
 Lobster Meat—B & M Red Jacket 1/2-pound cans 3 for \$1
 Norwegian Baby Mackerel in Olive Oil 1/2-size cans 6 for \$1
 Anchovy Paste — Crosse & Blackwell — Tubes 6 for \$1
 Shrimp Paste — Imported Norwegian. 1 1/2-oz. cans 7 for \$1

CANNED MEATS AND DELICACIES

Cudahy's Tang—new meat sensation—12-ounce can 4 for \$1
 Smithfield Deviled Ham Spread—2 1/2-ounce jar 4 for \$1
 Whole Ox Tongue — Red Crown, 1-pound jars; Regular \$1.25 seller. Each \$1
 Chicken & Egg Noodle—Randall's, 1-lb. jar 4 or \$1
 Corn Beef Hash—Libby's, Swift's or Armour's, 1-lb. can 6 for \$1
 Chicken Ravioli—Natoma Brand, 1-lb. can 6 for \$1
 Pate de Foies Gras (Gooseliver)—Cresca, 2-oz. can; regular 75c seller 2 for \$1
 Antipasto Hors D'Oeuvre—Gioyanni's, 4-oz. jars 3 for \$1
 Meat and Fish Pastes—Brands Imported; 1-oz. jars 10 for \$1
 COLLEGE INN DEAL — 3 cans Chicken a la King and 3 cans Cream of Chicken Soup All 6 for \$1
 Tender Made Ham — Wilson's, quarter size Per can \$1

PRESERVES AND JELLIES

LAST CHANCE to buy Dundee Imported Orange Marmalade 2 1-pound jars and 1 one-pound jar Our Own Grape Jelly \$1
 All for
 Seedless Grape Preserves—Our Own, 2-lb. jars; regular 39c seller. 3 for \$1
 Jams — Strawberry, Raspberry, Pine Cot, Peach, Seedless Blackberry and Seedless Black Raspberry. Our Own, 1-lb. jars 4 for \$1
 Imported English Black Currant Jam—Hartley's, 1-lb. jars 3 for \$1
 Old Fashioned Pure Jelly—Currant, Blackberry, Mint, Elderberry, Grape, Crabapple — Our Own, 10-oz. jars 6 for \$1
 Pure Jelly; Quince, Grape, Crabapple—White Rose, 10-oz. jars 8 for \$1
 Imported French Red Bar le Duc, 3 1/2-oz. jars 4 for \$1
 Imported Lime Marmalade—Rose's, 1-lb. jars 3 or \$1

MISCELLANEOUS ITEMS

Coffee—White Rose—Three grinds, vacuum cans 4 1-lb. cans for \$1
 Richelieu Flour—25-lb. bag Both for \$1
 Special Coffee—1-lb. bag Both for \$1
 Santa Clara Prunes—30/40 size, 10 lbs. \$1.00; 40/50 size 12 lbs. \$1
 Extra Fancy Blenheim Apricots 4 lbs. \$1
 Roxo Pale Dry Ginger Ale or Sparkling Water 12 for \$1
 pint bottles (plus deposit)
 American Cheese—Borden's, 2-lb. brick 2 for \$1
 Carbonated Water—White Rock, pint bottles 6 for \$1
 Candles—Hand Dipped, Taperlite, all colors, 10 inch, 20 for \$1.00; 12 inch, 14 1/2 inch, 17 1/2 inch 12 for \$1
 Hand Dipped Chocolates—Goebelin's, 2-lb. box each \$1
 Imported Peak & Frean's Biscuits, Assorted kinds, regular 75c seller 2 for \$1

COMMUNITY SERVICE GROCERY & MARKET
 393 CENTRAL AVENUE
 FOR ALL GOOD FOODS PHONE Highland Park 4040
 PHONE DEERFIELD 100