

PHONE H. P. 1500 WE DELIVER

# Liquor Service Co.

337 Waukegan Avenue Highwood

This announcement is not for the purpose of soliciting business where such solicitation is prohibited.

## PHONE YOUR ORDERS

No toll charges

Lake Forest 1500	Highland Park 4040	Winnetka 3800
---------------------	-----------------------	------------------

### SCOTCH WHISKIES

Teachers Highland Cream . . . . . ea. \$3.75; 3 for \$11.00  
 Sanderson's Vat 69, lge. bottle . . . ea. \$3.95; 3 for \$11.00  
 White Horse Cellar, large bottle; ea. \$3.95; 3 for \$11.50  
 Harvey's Bristol Cream Sherry, ea. \$5.50; 3 for \$16.00  
 Harvey's Shooting Sherry, lge. bottle, \$3.25; 3 for \$9.50

### IMPORTED RUM

Jamaica Green Seal . . . . . ea. \$3.39; 3 for \$10.00  
 Bacardi White Label . . . . . ea. \$3.39; 3 for \$10.50  
 Jamaica Rum, fine qual. 90 proof; ea. \$1.50; doz. \$16.50  
 Creme De Cocoa, 60 proof . . . . . ea. \$1.50; doz. \$16.50  
 Apricot Cordials, 60 proof . . . . . ea. \$1.50; doz. \$16.50

### VERMOUTHS

Martini & Rossi Italian or Dry . . . ea. \$1.89; 3 for \$5.50  
 Domestic—Italian Sweet or  
 French Dry Vermouth, large bottle \$1.35; 3 for \$4.00

### GINS

Mouquin Gin, large bottle; each . . . \$1.25  
 Booth's House of Lord Gin, lge bot. \$3.39; 3 for \$10.00  
 Old Tom Oxford Club Gin . . . . . ea. \$1.75; 3 for \$5.00  
 Oxford Club Dry Gin . . . . . ea. \$1.75; 3 for \$5.00  
 Axford Club Slow Gin . . . . . ea. \$1.95; 3 for \$5.50

### CHAMPAGNES

G. H. Momm's Extra Dry, lge. bottle \$5.25; 3 for \$15.50  
 Goasti Champagne, full qt. . . . . \$3.39; 3 for \$10.00  
 Imported Sparkling Burgundy . . . \$4.95; 3 for \$14.50

### MUMM'S IMPORTATION OF WINES

Amontellado Sherry, large bottle . . \$2.25; 3 for \$6.50  
 Very Fine Old Golden Sherry . . . . \$2.65; 3 for \$7.50  
 Hunt Roope & Co. Med. Tawney Port, \$2.65; 3 for \$7.50  
 Calvet & Co. Hunt Sauterne . . . . \$2.65; 3 for \$7.50

### IMPORTED STRAIGHT WHISKEY

A New Penn-Maryland Product! "WINDSOR" 100 Proof Straight Bourbon WHISKEY, pt. 98c; fifth \$1.55

A new produce sponsored by Penn-Maryland means quality plus moderateness of price! This is a straight bourbon—100 proof—and specially priced for Saturday.

Jameson's Irish Whiskey . . . . . \$3.95; 3 for \$11.50  
 Not a drop under 8 years old.

### BLENDED WHISKEY

Sweepstakes, per fifth . . . . . \$1.25  
 Gold Eagle, full quart . . . . . \$1.75  
 Old Oscar Pepper . . . . . pints \$1.19; quarts \$2.45

### WINES OF SUPERIOR QUALITY

Famous Italian Swiss Colony. Bottles specially for Liquor Service Co. Very old.

Muscatel, fifths . . . . . ea. 98c; doz. \$11.00  
 Sherry, fifths . . . . . ea. 98c; doz. \$11.00  
 Moselle, fifths . . . . . ea. 98c; doz. \$11.00  
 Port, fifths . . . . . ea. 98c; doz. \$11.00  
 Very Old California Wine, gal. . . . \$3.50  
 Sherry, Muscatel, Port, Etc.

### PABST BLUE RIBBON BEER

A leader in the beer industry. Must be good. Pours with a rich creamy foam. Pleasant after-taste. Case of 24 bottles \$2.75

PRAGER BEER \$2.55  
 Cast of 24 bottles

Imported quality at American prices. By ATLAS BREWING CO. Choice of light or dark. Brewed from finest malts, with selected domestic and imported Bohemian hops.

DREWRY'S ALE \$3.85  
 Cast of 24 bottles

**COFFEE** Tru-Val-U 2 lbs. for 45c  
**Pancake Flour** Pillsbury's 20 oz. pkg. 10c  
**BAKING POWDER** CALUMET 1 LB. TIN 26c

**STANDARD GRANULATED SUGAR**  
 No need carrying it home — we deliver free  
 10 LB. SACK **49c**

Here's a sale that will make it easy for you to economize and yet at the same time enjoy the finest foods. And don't forget, we offer a complete, free phone and delivery service.

**ARMOUR'S POT ROAST.**  
 Choice cut from Quality beef LB. 18c  
 Leg Veal Roast choice milk fed lb. 25c  
 Pork Chops lean lb. 19c  
 Short Summer Sausage, per piece 21c  
 "Star" Delites lb. 26c  
 Smoked Butt "STAR" Boiled Ham 1/2 lb. 17c

**LA CHOY Food Products**

**BEAN SPROUTS**  
 To give real flavor to Chop Suey 2 18 oz. tins 25c

**Chow Mein Noodles**  
 For something different Serve Chow Mein 2 5 oz. tins 35c

**Mixed VEGETABLES**  
 All that are needed for Chop Suey 18 oz. tin 27c

**BREAD** BETSY ROSS Milk 16-oz. loaf 10c

**EGGS** AYRSHIRE FANCY doz. 24c

**BUTTER** BLUE VALLEY lb. 28c GOLDEN GLOW lb. carton 27c

**GRAHAM CRACKERS** 19c

**SODA CRACKERS** 21c

**FRUIT COOKIES** 50c

**CHOCOLATE CAKE** 29c

**CLIMALENE** 21c

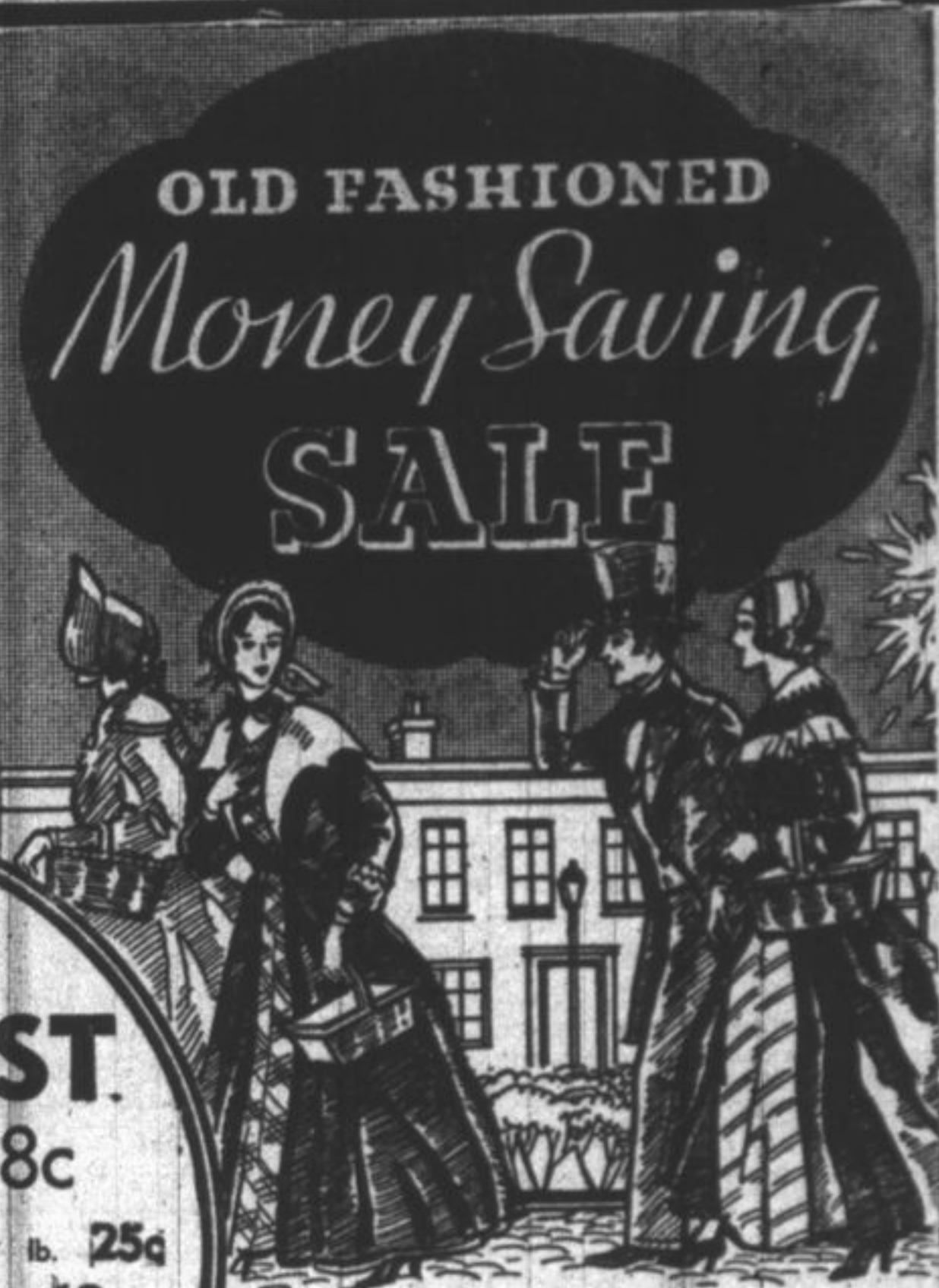
**BOWLENE** 17c

**H. R. H. Cleaner** 8c

**Chocolate**  
 Baker's Premium No. 1—fine for cakes and cocoa  
 1/2 lb. CAKE **20c**

**IVORY SOAP**  
 Kind to every skin It's 99 44/100% pure bar **5c**  
 Soap Flakes large pkg. **20c**

**AMERICAN FAMILY SOAP**  
**4 for 23c**



**OLD FASHIONED Money Saving SALE**

**RICHELIEU Quality Food Products**

Fruit Cocktail 2 No. 1 tins 33c  
 Carrots and Peas 2 No. 2 tins 35c  
 Corn Whole Kernel Golden Santam Tidbits 2 12 oz. tins 29c  
 Tapioca Quick cooking 10 oz. pkg. 9c  
 Lima Beans 2 1 lb. bags 25c  
 Grapefruit Unbroken Segments 2 No. 2 tins 31c  
**SYRUP** CANE & MAPLE 22 oz. bottle 25c  
 Macaroni & Spaghetti Economical 2 12 oz. pkgs. 23c

**ORANGES**  
 Florida Juice 150 size doz. 33c  
 Georgia fancy large, tender bunch 35c  
 Asparagus New Texas 5 lbs. 23c  
 Potatoes Fancy, crisp 2 bunches 9c

**BABY STUART**  
 Asparagus Cut green round 2 15 oz. tins 35c  
 Ginger Ale Baby Stuart 3 4 oz. bottles 39c  
 Plus 2c deposit on each bottle.  
 Apricots Extra fancy Blenheim lb. 25c

## SUPER-SERVICE STORES

Community Service Grocery & Market 393 Central Ave. Phone Highland Park 4040

**SWANS DOWN BISCUIT HIX** 19c  
 Regular 35c package

**KWIK-BIS-KIT FLOUR** 15c  
 Regular 25c package

**SANTA SLARA VALLEY PRUNES** 85c  
 5 pounds for  
 Large size. Very meaty. Superior flavor. Packed in cellophane bags.

**Herkimer County AMERICAN CHEESE** 29c  
 1 year old; lb.

**SWISS CHEESE** 33c  
 Aged and produced in Wisconsin; lb.

Try **M & C** MUSHROOM SAUCE  
 makes Spaghetti or Macaroni a real treat!  
**10c** Tender mushrooms, fresh vegetables in a richly blended Italian Sauce. Heat — then serve. It's delicious!

For All Good Foods Phone Highland Park 4040  
**COMMUNITY SERVICE**  
 Grocery & Market  
 393 CENTRAL AVENUE  
 Quality — Service

Sink Your Teeth Into a Tender Juicy **RIB ROAST OF BEEF**  
 6th and 7th Ribs 19c 1st & Center Ribs 27c  
 lb. lb.  
 Been many a day since it sold at this low price. So tender the rich juices run at the touch of a fork.

**Fresh Haddock Fillets** No bone, no waste. White meat. Dip in flour, fry in butter. Serve with a tartar sauce. **29c**  
**Chinook Salmon Steaks** Rich pink meat. Only one small bone. Marinate with oil, sprinkle with lemon juice, boil 15 minutes; lb. **25c**

**RIPE HONEY DEW MELONS** 39c  
 Fragrant and sweet. Ripe, luscious fruit. 1 serves 4 nicely; ea.

**GARDEN FRESH PEAS** 19c  
 Sweet and tender. Needed with beef roast; 2 lbs.

**Richelieu FRUIT COCKTAIL** 29c  
 2 No. 1 tall cans

**CHILI CON CARNE** 27c  
 3 No. 1 tall cans

**SAUER KRAUT** 29c  
 2 No. 2 1/2 cans

**COOKED RATION DOG FOOD** 25c  
 3 1-lb. cans

**PORK AND BEANS** 25c  
 tall cans; 4 for

**Mrs. Powell's Padre Style RIPE OLIVES** \$1  
 pint can 35c; 3 for

**This Spring's Crop MAPLE SUGAR** 39c  
 Whole 15-oz. brick  
 Maple sap boiled to a sugar brick to crack and eat like candy. Make the most delicious syrup by adding a cup of water to brick and boiling for 10 minutes. Strain through cloth.