

When I'm big an' old enuf I'm goin' to be a Scout, a great bighearted Eagle kind an' be a strong an' stout. I'll have a rifle 'at's got two blades an' one 't' open cans, a staf, an' big kanteen, knapsack with spon an' pans.

When I gitt' be a Scout a walk-in' on the groun' I'll lurn 't' stake an' stretch a tent an' tie the knots aroun' an' goin' 't' be most awful good to all the folks I know. I'll help all crippled boys an' girls to hurry up an' grow when I am big an' old enuf I'll hav' a uniform 't' fits me all s' snug an' fine 't' keep me nice an' warm. I'll 'nen' my Muther she wont cry an' I'll take her all about. I'll nurse her frum a cripple to a great big Eagle Scout.

Copyright 1933 by James W. McGuire

Week Only!
SALE
ING OFFER

on the new highly efficient, more economical, longer life, latest type

PHILCO BALANCED RADIO TUBES

Tube at regular price and only 1c more. Offer position Saturday—don't miss it! Any make radio set and we performance. Replace radio tubes—put your set up—and save money during sale.

at these Values!

226, 85c each	2 for 86c
271, 95c each	2 for 96c
227, \$1.05 each	2 for \$1.06
250, \$1.05 each	2 for \$1.06

COME IN—
While this offer lasts!
RDWARE CO.
ONY Phone 2041

the South....



ER
WAY TO HEALTH

Interesting of all... famous Carlsbad health and vigor. Refreshing day here beguile you. Is and pleasant here you may relax andas which sur-

comfort that will... private bath, eat, service doors port. Our Chicago office direct to The Baker

...TEXAS

CHICAGO AUTO SHOW AT COLISEUM SOON

33rd Annual Event to Open on Jan. 28; to Be a "Riot of Color"

With the closing of the Automobile Show at New York, the motor world now turns its attention to the opening of the only other National Automobile Show in America, to be held at the Coliseum in Chicago, Jan. 28 to Feb. 4, inclusive, including Sunday, Jan. 29.

Western Motor enthusiasts are eagerly waiting to view the display of a number of cars of "raindrop" pattern. In the search for an aerodynamic principle which would allow for bullet-speed in motor cars, engineers hit upon the idea of studying the form of raindrop, on the theory that a liquid unit hurtling through space would assume the form required for the least wind-resistance.

As a result, one of the most successful innovations in motor car design in the history of the industry has been perfected. The streamline effect is heightened and a new concept of gracefulness and smartness in automobile body style has come into being. Bodies are longer and wider, with tapering effects where wind-resistance is encountered, the wheelbase has been lengthened, and the "raindrop" shape permits the air to flow smoothly over the entire surface of the car, decreasing turbulent flow which adds to wind resistance.

This revolutionary change in car design results not only in greater speed but in economy of operation, greater mileage of gasoline and oil, longer life of the automobile because of reduced strain, more horsepower from the same expenditure of energy, and above all greater comfort.

This item of greater comfort is one that manufacturers will stress the most at the Chicago Coliseum display. The builders point out that one of the most trying and tiring elements in long distance motoring is the constant roar of the wind against which the car is plunging if a speed of 50 miles an hour or more is attained.

With the new "raindrop" design in use, tourists may travel 500 miles a day or more and at the end be as refreshed as when they started, it is claimed.

The Chicago show will also reveal many new conveniences for car owners and drivers which are bound to attract wide public attention. One of the novelties of the season, which seems destined to become very popular, is driver seat control of the rear curtain to eliminate the glare of the following car's lights.

A number of manufacturers have achieved their dream of many years for a satisfactory ventilation system whereby each occupant can regulate his own fresh air requirements. Individual systems of ventilation have been designed with remarkable ingenuity. In one instance, the dual cowl ventilators may be fully opened in rain or snowstorm. The water is trapped in an ingenious tank with a baffle and led through a special tube outside the car. Screens in cowl ventilators to keep out insects will be exhibited. There will also be shown designs of cowl which may be kept open during rain or snow storms.

Adjustable seats throughout cars, combination sun-glare shields and radio antennae, push button starters instead of foot-pedals, and many other features in the improved 1933 models will be shown at Chicago's 33rd National Automobile Show.

New Studebaker and Rockne Models Being Shown in This City

Coincident with the 1933 National Automobile Show in Chicago, starting Saturday and lasting a week, the Park Avenue Motor Sales of this city, located at 386 Park avenue, is showing the new 1933 Studebaker and Rockne models. The residents of this community are invited by J. Hertel, manager of the local firm, to inspect the new cars.

Mr. Hertel, in telling about the new Rockne six, states that it is roomier, more powerful and more beautiful than its predecessor, which since its introduction a year ago has climbed from 31st place in the industry to a position among the first ten leaders.

Bodies of the new Rocknes have been made more comfortable and more attractive. The chassis, already tested and proved by three years of engineering experiment and one year of practical driving by owners, has been improved. The motor has been given increased power. The distinctive Rockne aero-

dynamic lines have been further streamlined. The f.o.b. factory prices of the new Rockne six line start at \$585.

Studebaker's new line consists of a new Speedway President Eight, a new President Eight, a new 100-horsepower Commander Eight for \$1,000, and a new Studebaker Six. These new models incorporate the most impressive combination of improvements in all Studebaker's 81 years of history and result in the finest, best balanced, most trouble-free automobiles that Studebaker has ever offered to the buying public, according to the manufacturer.

The most outstanding improvement in the new Studebaker line is power brakes. There are other far-reaching developments including automatic control of carburation and manifold, reduction of lubricating points, increased horsepower, vastly enhanced appearance, new ease of handling, greater silence and increased comfort.

Play Contest Winners Announced January 16

The play contest sponsored by the Sisterhood of the North Shore Congregation Israel closed the first of the year and winners were announced at the Sisterhood meeting on Jan. 16.

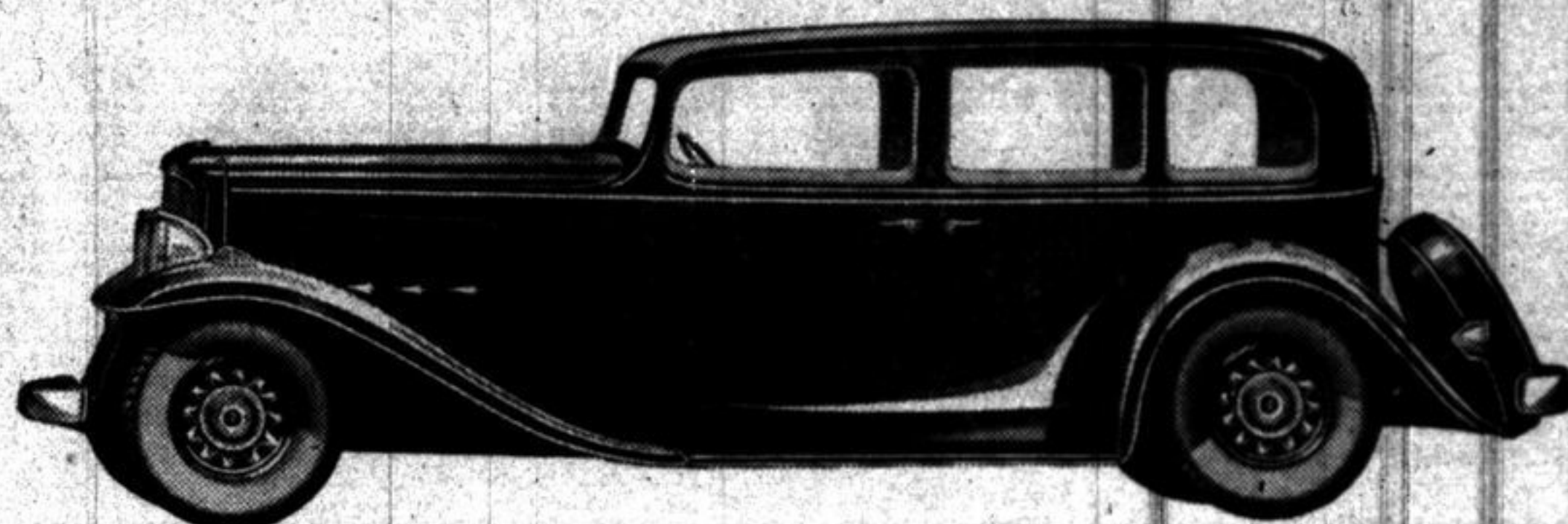
Fourteen professional and amateur playwrights from all parts of the country sent in manuscripts and one-act plays. The prize of \$25 was awarded by unanimous consent to Elma Ehrlich Levinger of Columbus, Ohio for "The Bride Maiden" which was considered an outstanding play.

The committee considered this play too dramatic for Sisterhood presentation, and decided to give a second prize to "Deaf By Choice" written by Miss Rutheta Pretzel, a play written especially for Women's clubs and eminently fitted for production by members. This play is to be produced at the final spring meeting of the Sisterhood with a splendid cast.

Deerfield C of C to Meet Tonight

The Deerfield Chamber of Commerce is meeting Thursday evening (tonight) at the office of Vant and Selig at 7:45 o'clock. An election of officers will be held.

THE NEW NASH SEDAN



The new Nash models are being shown in Highland Park by A. G. McPherson, Inc., 387 East Park avenue. Three straight-eight groups—Ambassador, Advanced and Special—a popular-priced new Standard

Eight, and a flashing new Big Six series constitute the new Nash line. The 1933 version of Nash "slipstream" body design constitutes one of the most important achievements of recent years. Two principal factors are involved in this basic design. The first tends to minimize air resistance, and the second leads to a complete utilization of the space within the bodies.

are involved in this basic design. The first tends to minimize air resistance, and the second leads to a complete utilization of the space within the bodies.

Bungalow Bowling Teams Play Tonight

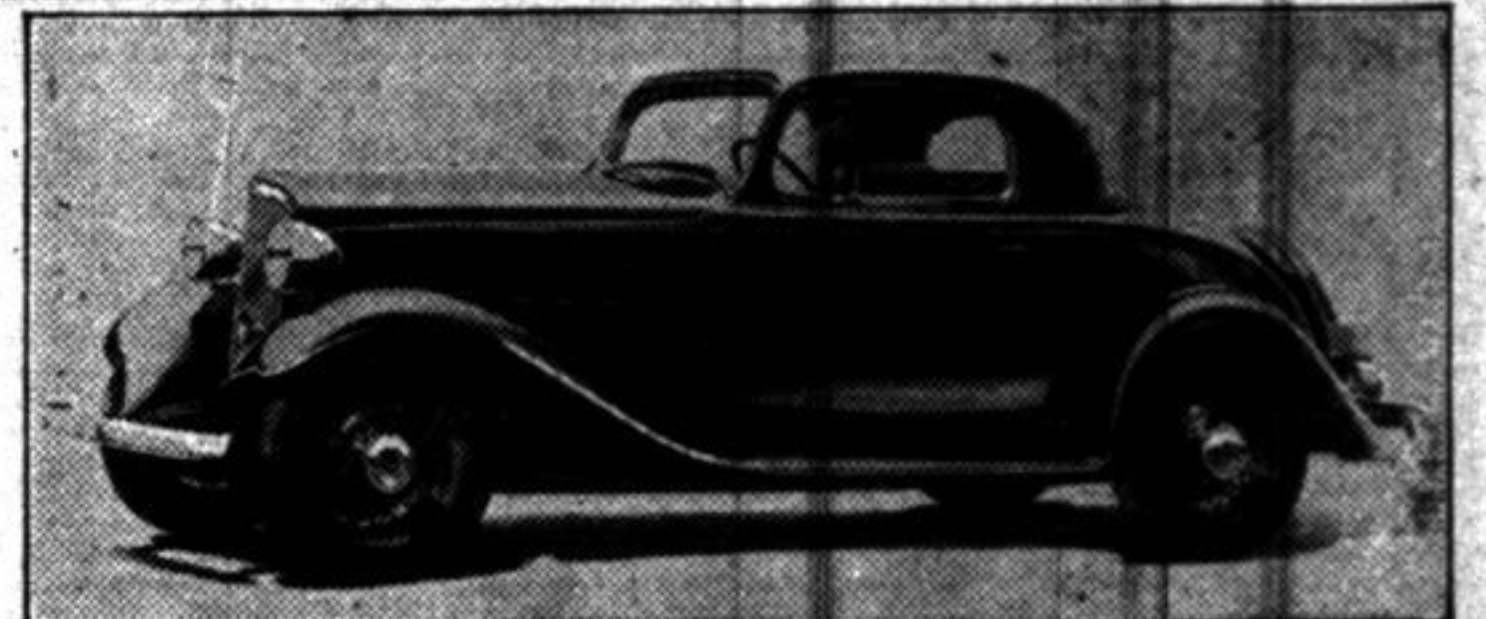
The Bungalow church bowling teams, Coyotes vs. Tigers, played three postponed games on Monday evening in the Arno Frantz basement recreation room. The Tigers won two out of three games, so the Coyotes, the league leaders, now have seven games won and two lost.

Several records for the season were broken Monday evening, one being a tie game of 710 for the Tigers also displaced the Panthers for second place. Quite a number of changes in standing of players will be noticed this week.

The next scheduled game is tonight when the Panthers play the Bears.

St. Paul's Ladies Aid Meets February 2

The Ladies' Aid society will meet Thursday afternoon, Feb. 2, at St. Paul's Evangelical church school room. "We and Our Neighbors," (Race Relations) will be the topic discussed, led by Mrs. F. G. Piepenbrok, chairman of the general education committee. Hostesses will be Mrs. Edward Bleimehl, Mrs. Olivia Anderson and Mrs. Louis Anderson.



William Ruehl and company, of 139 North Second street, Highland Park, is showing the new 1933 Chevrolet models, including the sport coupe pictured above. Longer wheelbase, new "air-stream" styling, more power and speed coupled with greater economy, larger and lower Fisher bodies with new Fisher "no-

draft" ventilation, shatterproof glass in windshield and ventilators, cushion-balanced motor mounting, improved free wheeling plus synchromesh transmission with silent second gear, and a "starterator" for simplified starting are all listed as new standard features included in the list price.

Here it is, CHICAGO!

The Packard Hall of Precision -- sensation of New York's Automobile Show Week

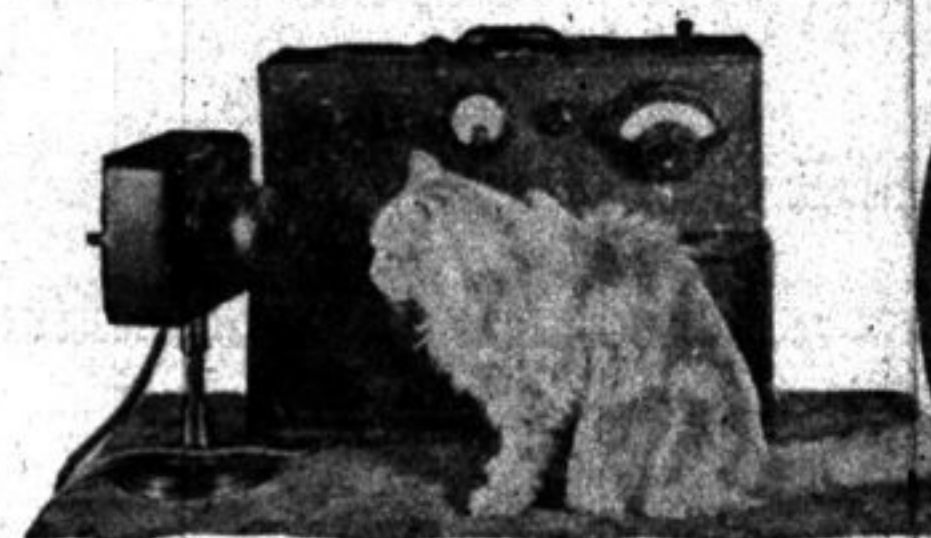


PROFESSOR AUGUSTE PICCARD inspects the Packard Light Ray Machine which checks precision gauges to one-millionth of an inch.

NEW YORKERS saw it during their Auto Show and applauded. Now that Chicago's show is opening you can see the Packard Hall of Precision, the greatest exhibit of its kind ever presented. And you'll see it with the "original cast" intact—with every feature that was shown in New York, from precision instruments to famous motors and trophies these motors helped to win. In this exhibit are marvelous devices that enable Packard engineers and craftsmen to carry accuracy of manufacture to an almost incredible degree. A machine that, through the use of light rays, measures to a millionth of an inch. Scales that weigh the ink in a signature. A device that measures the volume of sound in a whisper.

You will also want to see the cars that these precision methods make possible. See them at the nearest Packard showroom. And by all means drive one over some road you know by heart. Compare it with every other fine car 1933 can offer you. We believe you will agree that the new Packards are not only the finest cars Packard has ever produced, but the finest cars America has ever seen.

PACKARD MOTOR CAR COMPANY OF CHICAGO

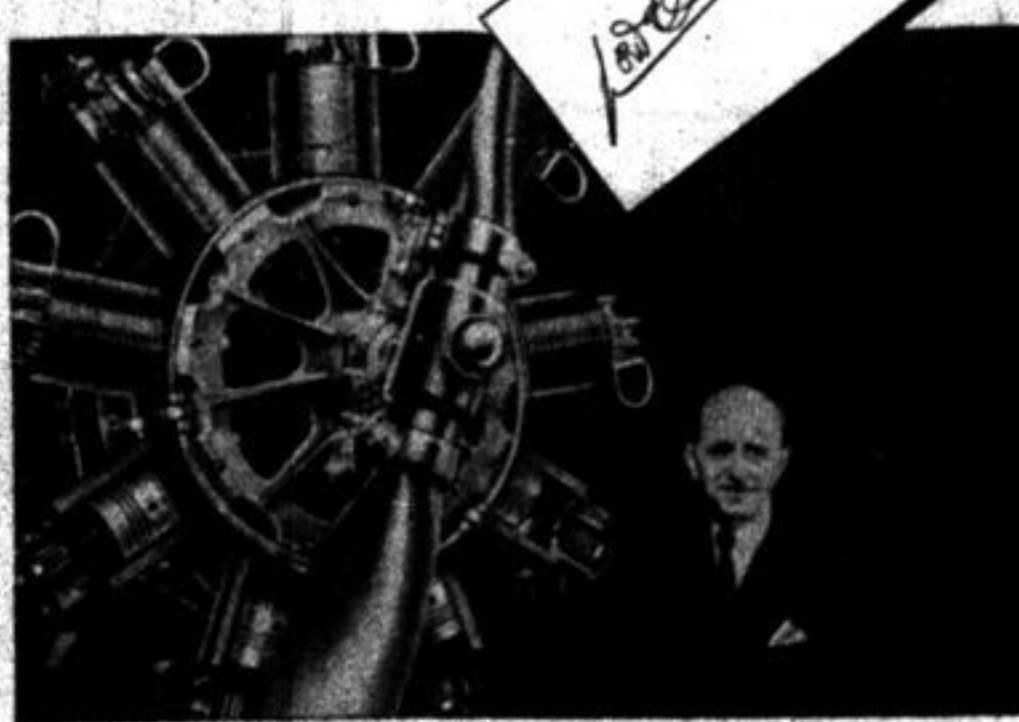


MEASURING a cat's purr with the Acoustimeter. With this device, Packard has located and eliminated car noises that are inaudible to the human ear.



MISS FRIEDA INESCORT, leading lady of "When Ladies Meet", watching a Packard engineer measure the diameter of a hair from her own head. This measuring device, used to check the precision of many Packard parts, is accurate to one one-hundred-thousandth of an inch.

LOWELL THOMAS, famous author, watches an engineer weigh the ink in his signature. These scales are accurate to one five-millionth of a pound.



WALTER LEES pictured with the Packard-Diesel aircraft engine with which he established the world's non-stop non-refueling endurance record of 84 hours and 32 minutes.



PRESIDENT MACAULEY telling about the Collier Trophy, presented to Packard for "the greatest achievement in Aviation" in 1931—the Packard-Diesel Aircraft Engine.

See the Hall of Precision at the Edgewater Beach Hotel. Open Daily 1 P.M. to 11 P.M. January 28th through February 4th.

EXTRA SERVICE

With Our **SINCLAIR** GAS and OILS

Have your motor cleaned with our **KLENZMOTOR** FLUSHING MACHINE

ALEMITE GREASING
TIRE REPAIRING
EXIDE BATTERIES
GOODYEAR TIRES

Elm Place Service Station
Corner Elm Place and First Street. Tel. H. P. 5555

1933 ROCKNE

SPONSORED AND GUARANTEED BY STUDEBAKER

You have to go to cars of higher price to find its rival!

\$585
AND UP AT THE FACTORY

PARK AVENUE MOTOR SALES
386 Park Avenue Phone H. P. 171