

HEIN IS
OF OPERA

(from page 3)

criticism than
e called him old-
ary” says

Singers

season Gatti has
of subscriptions,
guarantees from
wly formed asso-
r may not see
winter. He has
peras to the rep-
ell present eleven

mes story of the
by William B.

remier lyric the-
year, the Metro-
ouse opened its
n a new season,
part through the
allant leadership
azza, the gener-
co-operation of
making up New
a company and
on this occasion
evoted to opera

Subsidy

an had ‘carried
icious husbanding
the previous sea-
to subscriptions
the the govern-
tax on all tick-
on a ‘no-profit’
individuals and
the theatre and
artrre boxes in
hoe, gave virtual
in land tax and
on their invest-

concerned with
association had
ossible a contin-
an artistic plane.
for a shorter
price than in a
, was greeted by
ay in somewhat
of the vernacular
eatest and grand-
ny season, good

e gala first night
tacle and melody

thousand limou-
s arrived late to
rage of flashlight

Good Omen

swept and gar-
d 4000 spectators,
fore the curtain
of \$15,000 box-
the new season’s

permost in the
t’s gala audience
general spirit of
turn to familiar
ddings, to the red
pairs in 1903-04,
ubly-armed’ easy
l masonry walls
romenades, which
ghtly resort and
st of New York
licatory “Faust”
22, 1883.”

At LORD'S

FOUNTAIN SQUARE, Evanston Phone Winnetka 520

Gala Frocks for Holiday "Formals"

THEY'RE in the Grand Manner, these stunning new frocks—regal robes in crepe; sumptuous affairs in satin; or delicate, dressmakerish things in lace. Strictly formal, yet gracious enough for dinner at home. And they should definitely establish your reputation for chic. We have them priced all the way from \$10.75 to \$59.50.

In the Apparel Section—
LORD'S—Second Floor



A sophisticated dress of hyacinth blue satin with a graceful sheer, beaded cape. In size 16.

\$29.50



The fascinating corded collar on this white taffeta frock gives it an air of naivete. Size 12.

\$10.75



Brown and orange velvet flowers are smart accents to this dress of sheer gold crepe. Size 16.

\$16.50



Very dainty, very feminine is this formal of fragile sky blue lace with an intricate gold buckle. Size 12. Chic, no end.

\$16.50



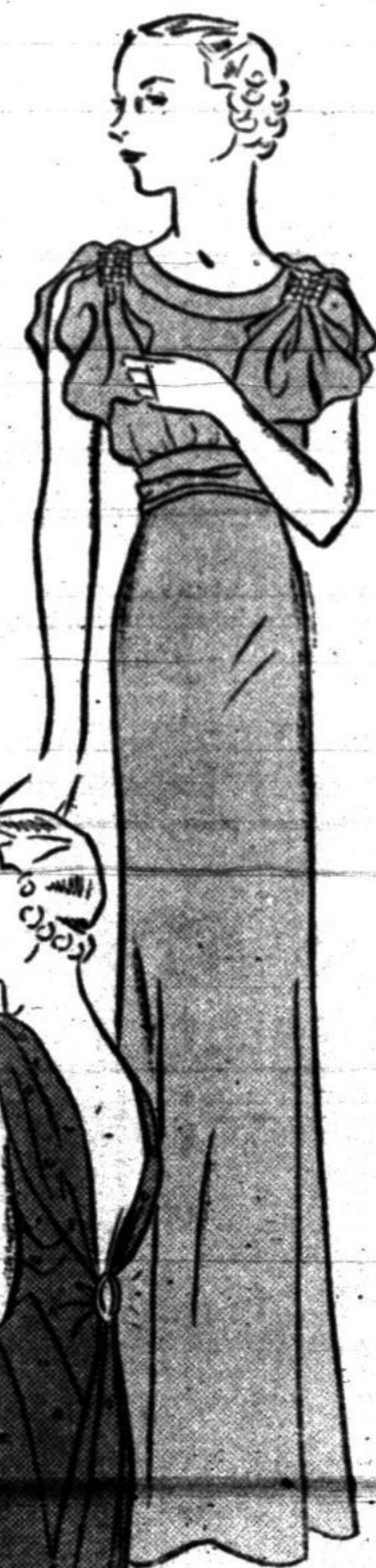
A white crepe dress complete with a red velvet coat for holiday festivities. The dress repeats the red in the corsage. Size 14.

\$29.50



A sparkling frock of tinsel net over a turquoise slip with matching velvet flowers. Size 14.

\$16.50



Azure blue satin with puffed sleeves and the new shirred shoulder assures you of a devastating effect. Size 14.

\$10.75



Green Bagheera crepe studded with brilliants makes this frock the very latest in formal wear. Size 16.

\$29.50

Rhinestone Jewelry, \$1.00

Long, pendant earrings, bracelets, necklaces and clips in pairs in brilliant rhinestones. For gifts, too.

LORD'S—First Floor

Beaded Evening Bags \$1.95, \$2.95

They're such dainty formal fashions, tiny pouch shapes, handsome silver frames. Splendid gifts, too.

LORD'S—First Floor