

S REMAPPING CLES REMOVED

Sees in Action of Court Chance of districting

legal obstacle to the re-
Illinois, as attempted
legislature, was removed
n rendered Tuesday by
States Supreme court,
nty may yet be in a
only the north tier of
Cook county, instead
ortion of Cook county,
J. Lyons stated last

was chairman of the
ent committee of the
d was greatly disap-
his committee's plan
nd kept Lake county
ng a new congression-
stead of leaving it in
district in which it is

Downstate Dstrict

Illinois reapportionment
congressmen-at-large
were eliminated, and
ation of the Chicago
ing Cook, Lake, Du-
counties, was increas-
to fourteen districts.
ains its thirteen repre-
increases the number
from twenty-five to

er is now left up to
slature, I will intro-
sary bills to make it
unless the Illinois
reverses its original
llows the act to be-
ep. Lyons said today.
Be Candidate
e reapportionment is

p. Lyons may become
or congress, in the
friends, although he
y this in his conver-
News-Sun.
pportionment would
y a dominating posi-
getting and would
re Lake county's can-
y, providing he were
eld against whoever
y end of the district
nning.

Scout Troop 2

f troop 2 will meet
at the home of Miss
n for a social meet-
ill come in costume
rade party.
da Vinyard, Scribe.

ch, of 1607 Grand
gan, last week was
the practice of law
court in a proceed-
by the Illinois Bar
h charged him with
ethical conduct, ac-
ssociated Press dis-
ngfield.

**E LAUNDRY
ND
ANING CO.
H. P. 178
LAUNDERERS**

MARKETS IMPROVE IN THREE MONTHS

Wholesale Commodity Prices Show Increase, July to September, Claim

The advance in wholesale com-
modity prices in the United States by
almost 6 per cent since June 30 to
September 30 or an average of 2
per cent a month for three months,
is the most constructive sign of re-
turning economic stability since the
world depression began, the Na-
tional Foreign Trade Council as-
serts in a fact finding study issued
last week.

Following a steady fall for the
preceding seven months, during
which wholesale prices fell from
November 1931 to last June by an
accumulated total of 13 per cent,
the reversal of this trend at mid-
summer demonstrates, the Council
declares, that a determined stand
against profitless merchandising is
again being made by American pro-
ducers and manufacturers. The
statement continues:

Last Year

"Last year after falling by 10 per
cent from the first six months of the
year, wholesale commodity prices
stood relatively firm for the succeed-
ing five months with an aggregate
loss of less than three per cent. But
a renewed unsettlement of condi-
tions, including the various depart-
ures from the gold standard, ex-
change restrictions set up by 29 na-
tions, and the imposition of new
tariffs and other barriers to world
trade, once more started the down-
ward drift of our own as well as
world prices.

We are now again in the midst of
a recuperation from these retrogres-
sive forces. Each one of them can
only be counteracted ultimately by

a real resumption in world trade.
The key to that resumption lies more
nearly in this country than in any
other. That is why the present rise
in our wholesale commodity prices
is an indication of improvement.

Foreign Trade

"Coupled with it is the steadily
increasing tendency of the Ameri-
can foreign trade balance sheet to-
ward an excess of imports over ex-
ports. In the fiscal year closed last
June our imports were only \$176,-
000,000 less than our exports. Ex-
cept for the fiscal year 1923 this is
the lowest export balance we have
had in more than 30 years.

"Our exports still amount to be-
tween 9 and 10 per cent of our na-
tional production, and have not de-
creased in this proportion since the
depression. The unusual fact of the
situation is that the volume of im-
ports now necessary to sustain
American industry and supply
American economic needs has re-
mained well above the average fall
of business activity. The compara-

tive figures are 29 per cent loss for
imports and a 37 per cent loss for
our general domestic production
from the last five-year average."

Unclaimed Letters

Unclaimed letters of foreign or-
igin, at local post office October 19:
Jose Garcia
Geo Gondotz
Herrn George Prester
Senor Sebastian Rendon
Senor Sebastian Rendon
Mr. and Mrs. Adolf Weber.
Hugo L. Schneider, Postmaser.

William Krase, 79, formerly a
resident of Waukegan and North
Chicago, passed away last week at
the home of his daughter, Mrs. Emil
Sawusch, at Rondout. He was the
grandfather of Edward Krase, Jr.,
the ten-year-old Libertyville school
boy killed three weeks ago when
his bicycle was struck by an auto
driven by Miss Frances Waldo, a
Lake Forest college student.

Present Comedy-Drama at Deerfield School

"The Whole Town Is Talking," a
comedy-drama, is to be presented by
the Hilarians at the Deerfield Gram-
mar school auditorium on Sunday
evening, Oct. 30, at eight o'clock for
the benefit of the Holy Cross church.

Jack Ford, nine-year-old Wau-
conda school boy had more than his
share of hard luck last week when
he fell while playing ball and broke
both bones in his left arm at ex-
actly the same places that fractures
occurred in another accident two
months ago.

**RELIABLE LAUNDRY
AND
DRY CLEANING CO.
Phone H. P. 178
QUALITY LAUNDERERS**

ELECT

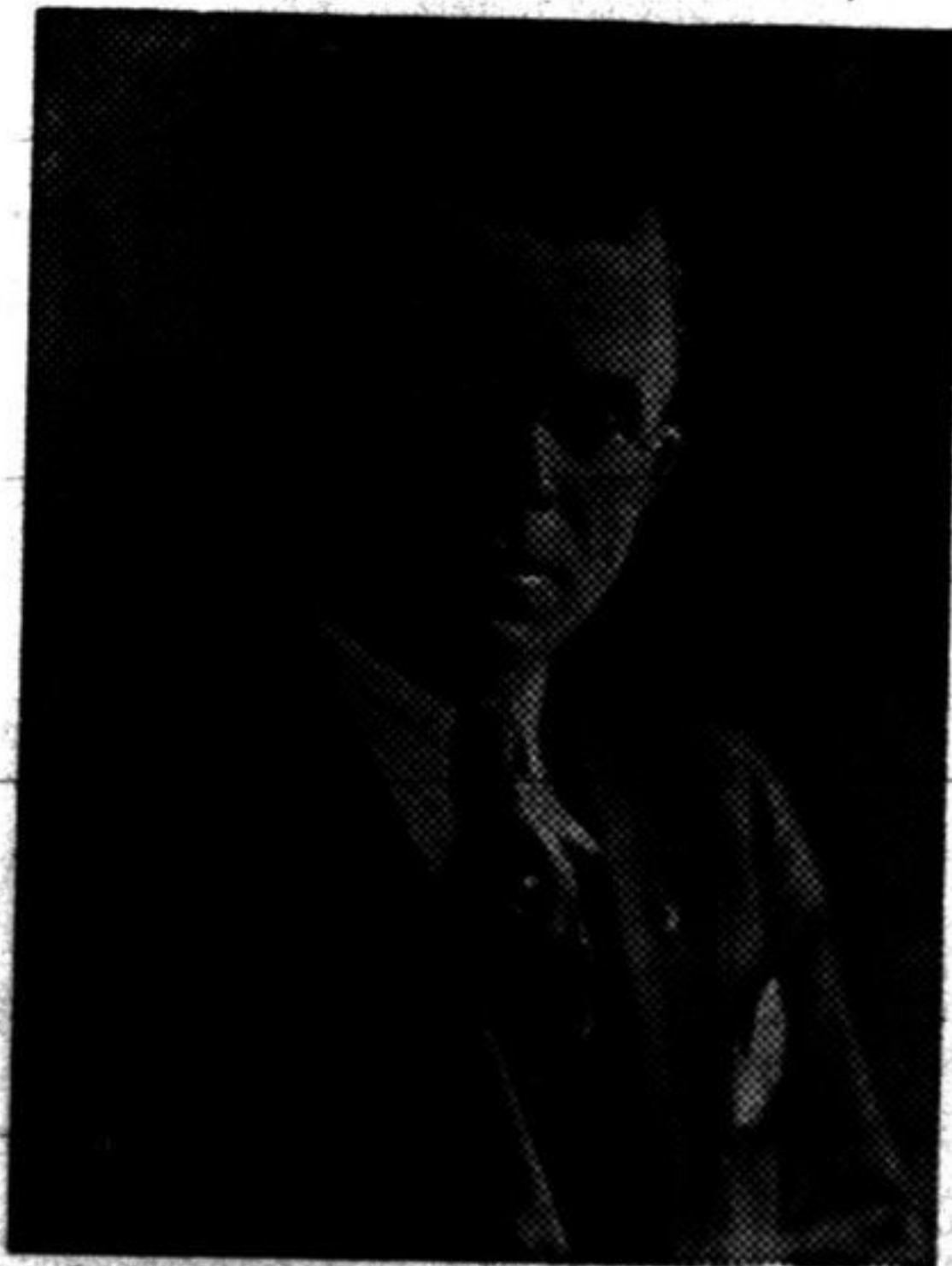
CHARLES E. MASON

REGULAR REPUBLICAN CANDIDATE FOR

STATES ATTORNEY

OF LAKE COUNTY

RECORD OF CHAS. E. MASON
Has Served Lake County Honestly
and Efficiently as



Assistant State's Attorney.
Justice of the Peace,
Probation Officer—Circuit Court.
Judge of Police Court—City of Waukegan.
Deputy Clerk of the Circuit Court.
Secretary of Civil Service Board.
Attorney for Village of Round Lake.
Vice-President of the Lake County Bar Association.
Member of Committee on Professional Ethics—Illinois
State Bar Association.
Member of American Bar Association.

VOTE

For a Man Whose Reputation
for Honesty and Fair Dealing is
Unquestioned

Electro-Vaporized Mineral Baths
Scientific Swedish Massage
Infra-Red Generator
GIESER HEALTH PARLOR
(Women Exclusively)
North Shore Trust Building, Room 307
House Calls if desired
Office-H. P. 4002 —Tels.— Res.-H. P. 498

IREDALE

Chairs and Tables for
rent for all occasions.
Moving and Packing of
household goods.

HIGHLAND PARK

WINNETKA

EVANSTON

Phones

University . . . 9300

Wilmette . . . 1332

Winnetka . . . 1332

Highland Park 181

STORAGE