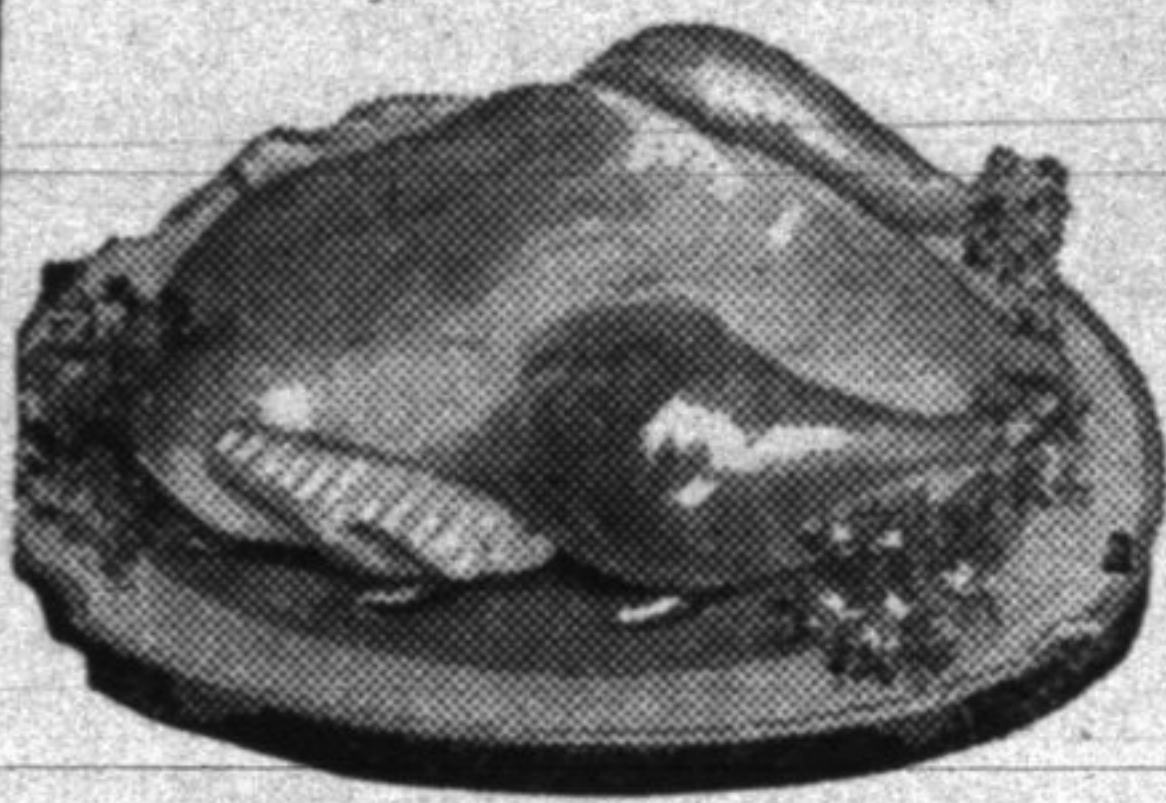


**Food A&P Stores**  
**MEAT**  
*Sale*

You can make a ceremony of carving when these fine roasts are brought to the table. Housewives are learning to know our high quality meats which maintain fine standards at low prices.



- FANCY DRY PICKED **TURKEYS**  
lb. 28c
- FANCY **GEESE**  
lb. 19c
- SWIFT'S PREMIUM ROASTING **CHICKENS**  
lb. 30c
- GENUINE SPRING **LAMB LEGS** . . . lb. 21c
- PORK Loin Roast** lb. 12c
- NATIVE BEEF **POT ROAST** . . . lb. 15c
- ARMOUR STAR—whole or half **BACON** . . . lb. 22c
- SMOKED BONELESS **PICNICS** . . . lb. 10c

Highland Park, Illinois  
 512-14 Central Ave.  
 THE GREAT ATLANTIC & PACIFIC TEA CO.  
 Middle Western Division

**Pauper Must Reside in Township Year To Be Eligible for Relief**

A pauper must be supported by the township in which he was last a resident, for one year after he leaves that township, according to an opinion by Attorney General Oscar E. Carlstrom. At the end of the year, however, the opinion said, the township where he has taken up a new residence is liable for his care.

The opinion was given as the result of Mrs. Fannie Fain, overseer of the poor in Capital township, asking State's Attorney H. E. Fullenwider, Springfield, for a ruling on resident requirements for paupers.

Mrs. Fain said the request for the ruling was prompted by paupers coming from other townships to Capital township in search of employment in construction of Lake Springfield and other Springfield projects.

**HOW VOTERS LEAGUE WORK IS MANAGED**

(Continued from page 3)

these costs or secure better service at the same costs, through government action.

In line with its purpose the committee is studying such topics as the tariff, the regulation of public utilities, and activities in behalf of the consumer, of the Federal Trade Commission, the Department of Agriculture, the Department of Commerce and the Bureau of Home Economics.

During 1929 and 1930, when revising the tariff was front page news, the ildest reader could not help but note a novel political development. Although many, many manufacturers and farmers assured congress that their respective businesses and the welfare of the whole country could not survive unless the tax on sundry imported products was increased a few persons, mere consumers, raised the point of what effect such a general increase would have upon their pocketbooks.

**Asking Questions**

The consumer, who is coming to regard the tariff as a problem vitally affecting his everyday marketing and housekeeping, has begun to ask questions. What is the tariff supposed to do? Has the United States a clearly defined tariff policy? What are the effects of specific rates on manufacturers, workers, farmers, consumers, exporters, etc? Who is benefitted and who burdened by the tariff. The Living Costs committee is trying to find the answers to these questions.

Public utilities are also of interest to the woman voter because they comprise a group of goods on the budget over which the government has direct price control. Water companies, railroads, street cars, buses, the telephone, telegraph, gas, and electric companies are all public utilities. The consumer pays for them directly and indirectly as they figure as overhead in the price of all other goods.

**Right to Regulate**

Since these companies are public necessities and are often by nature monopolistic, and since they often involve the use of the public lands for tracks, poles or pipelines, the people have a right, through their government, to regulate these businesses. The Living Costs committee is concerned with the state and national commissions which have been set up as the people's agents to see that public utility rates are reasonable and service good.

**Announces Holiday Tour to Florida**

John F. Leonardi, travel bureau expert, with offices in Highwood, announces a special holiday tour to Florida points to leave Chicago on a special train on Dec. 26. This train is fitted with all the most modern equipment and conveniences, including a gymnasium, radio and movies, and everything possible is provided for the comfort and entertainment of passengers. Mr. Leonardi has traveled widely and is prepared from experience to make all necessary arrangements for patrons of this tour.

**Food A&P Stores**  
 WHERE ECONOMY RULES

**BORDEN'S, PET OR CARNATION EVAPORATED MILK**

BABY SIZE 3 CANS 10c  
 3 TALL CANS 19c  
 White House Milk 4 TALL CANS 22c  
 BABY SIZE . . . 4 CANS 11c

- PILLSBURY'S **Pancake Flour** . . . 3 1/2-LB. PKG. 32c
- Jell-O** ASSORTED FLAVORS . . . 3 PKGS. 22c
- Wheaties** SKIPPY SAYS THEY'RE "ELEGANT" 8 oz. Pkg. 12c

**FRIDAY AND SATURDAY SPECIAL!**

SUNNYFIELD **FLOUR** 24 1/2 lb. Bag 42c

**BEANS** QUAKER MAID . 4 16-OZ. CANS 19c

**FRUITS and VEGETABLES**

TEXAS SEEDLESS GRAPEFRUIT, size 96 . . . doz. 35c  
 SOLID CRISP CABBAGE . . . 2 lbs. 5c  
 U. S. NO. 1 WISCONSIN POTATOES . . . peck 15c

**CHEF BOY-AR-DEE 33c**

Instant **SPAGHETTI DINNER**

Ready in 12 minutes

1 THE CHEF'S FAMOUS SAUCE  
 2 DELICIOUS ITALIAN CHEESE  
 3 HARD DURUM SPAGHETTI  
 ALL IN ONE PACKAGE!

**AGHETTI INNER** for 3

- SEMINOLE TISSUE 3 Rolls 19c
  - LUX Large Package 20c
  - LUX TOILET SOAP 4 Cakes 25c
- THE GREAT ATLANTIC & PACIFIC TEA CO. Middle Western Division

THURSDAY, I  
**Ravinia**  
 Comp  
 In presen  
 evening of  
 vinia Playe  
 appropriate  
 one of Phil  
 edies. "Holi  
 our pay fest  
 hand, not on  
 the play itse  
 something v  
 chaser, lendi  
 happy holid  
 Barry has  
 comedy with  
 in mind, ma  
 to be enjoye  
 old alike. H  
 actors and f  
 tions in wh  
 tragedy are  
 causes one t  
 one's own th  
 duces, throu  
 character, tw  
 cess in life.  
 Edward Seto  
 Crams all ar  
 individual typ  
 difficult for o  
 of at least on  
 ers and want  
 lem. Linda,  
 Mayo, is the  
 story, and is  
 person with  
 pendent natur  
 son of Evans  
 Johnny Case  
 apparent enjo  
 young man  
 Linda's sister  
 a solution of  
 perative. For  
 life does not c  
 cess, but for  
 Julia and Edw  
 is the one  
 Miss Enid Phi  
 the part of Ju  
 plays the role  
 Work on pro  
 pleted under  
 vision of Ger  
 director, and  
 Harriet Gold  
 Golden is Ver  
 publicity for  
 prompting is  
 Buhl. The stag  
 ned by Isabel  
 with Isadore S  
 ters has char  
 sound technica  
 erties are take  
 Buhl. The war  
 being loaned by  
 chants and has  
 myra Gibson.  
 Buhl, Meta Mi  
 Clernan, Elizab  
 Purdy will us  
 ance.  
**Tesse to Ru**  
**For C**  
 While John  
 Democrat who  
 Carl Chindblom  
 last election, a  
 dacy for congr  
 friends, prospe  
 other offices in  
 ing backing for