

**RELIABLE LAUNDRY
AND
DRY CLEANING CO.**
Phone H. P. 178
QUALITY LAUNDERERS

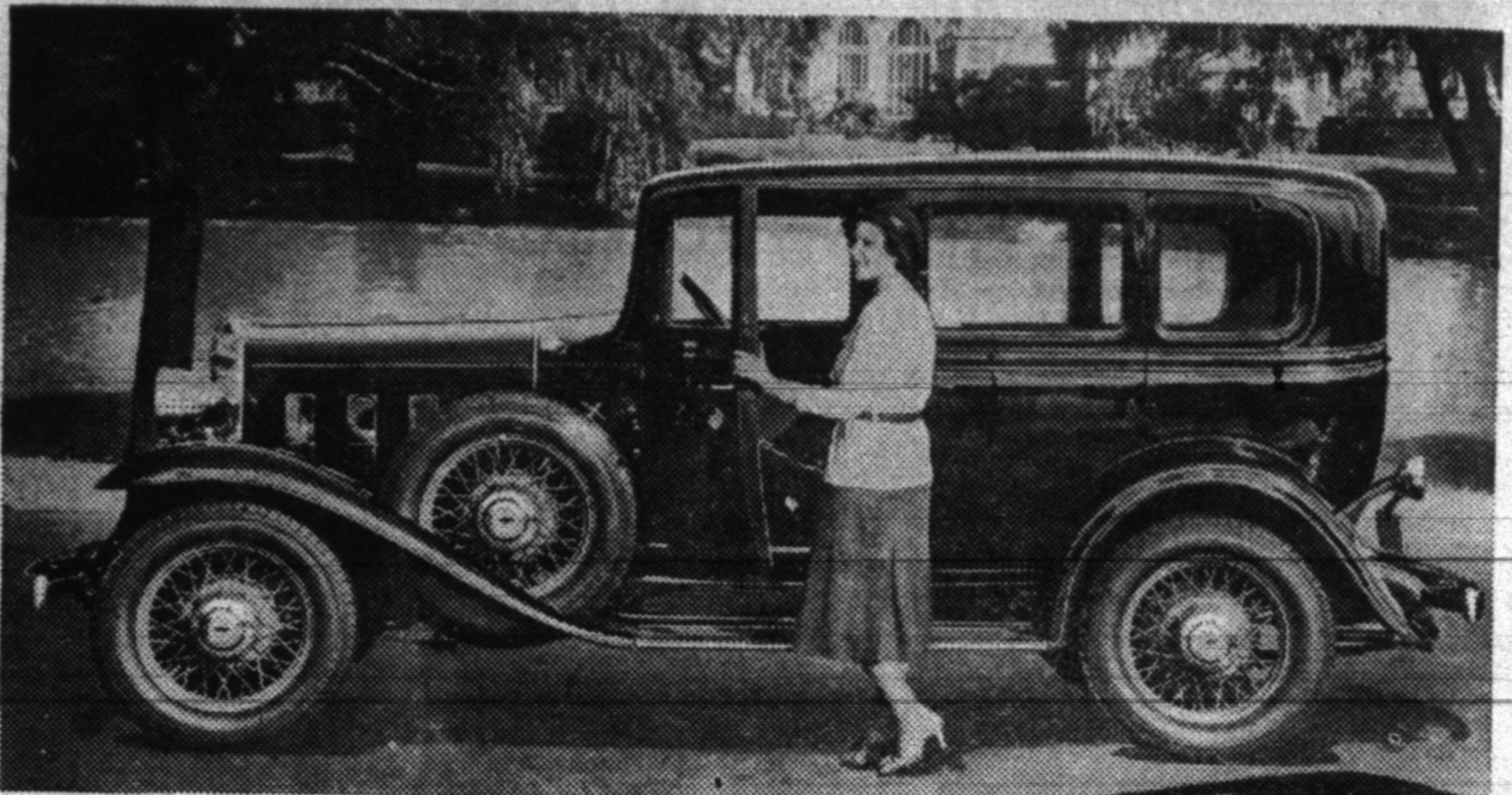
TELEPHONE 410
J. SMITH
Dealer in
JUNK
60 N. First St. Highland Park

Collette Soeurs
Dressmaking
Remodeling
Altering
GOWNS - SUITS - WRAPS
COATS
individually designed.
Moderates rates
For appointment phone
Winnetka 1011

**GREENSLADE
Electric Shop**
Electrical Contractor
4 South First Street
Telephone 555 Highland Park

**CHRISTIAN SCIENCE
READING ROOM**
43 NORTH SHERIDAN ROAD
Highland Park
Maintained by
First Church of Christ, Scientist
of Highland Park
381 Hazel Avenue
CHURCH SERVICES
Sunday School 9:30 a.m.
Between Ages 4-10
Morning Service 11:00 a.m.
Wednesday Evening Meeting 8:00
You are cordially invited to visit
the Reading Room,
where the Bible, and all authorized
Christian Science literature may be
read, borrowed, or purchased.
HOURS: Week days, 9 a.m. to 6 p.m.
Wednesday until 7:30 p.m. Sundays:
2:30 to 5:30 p.m. for reading only.

New Chevrolets Now Displayed Aid Employment Throughout U. S.



Above: Special Sedan
Right: Head-on View



Chevrolet's new car for 1932, embodying silent Syncro-Mesh transmission in combination with selective free wheeling as standard equipment at no extra cost, and practically every proven automotive advance of recent years, is now displayed at dealer showrooms throughout the country.

While remaining in the price class in which it won world leadership this year, the new 1932 models offer features heretofore considered exclusive to the high price field, as well as a new front end mounting never before shown on any car.

Called "The Great American Value for 1932," the line offers in support of this slogan a twenty per cent increase in power, faster acceleration, top speeds of 65 to 70 miles an hour, new Fisher bodies with a modern streamline styling, down-draft carburetion, counter-balanced crankshaft, fingertouch front seat adjustment and many other refinements over the 1931 models, which, from the standpoint of public acceptance, were the most successful in the history of the company.

Twenty standard and de luxe models are in the new line, of which the Special Sedan, pictured above, is the aristocrat. The lower view shows the new front end and the massive, powerful appearing hood enclosing the improved engine.

In addition to interest centering on the cars themselves, the announcement at this time has national significance in that activity brought on by production of the new cars is expected, at conservative estimates, to add materially to the earnings of 200,000 people throughout the country just before the holiday season and before the severe winter season sets in.

The company's 21 domestic plants all are busy producing cars as fast as precision manufacturing limits will permit so that deliveries may be made with the least possible delay. More than 30,000 of the new cars already have been built for dealers' showroom displays, and more than that quantity

are expected to roll off the assembly lines during the present month.

The new car is the first in the low-price field to offer the combination of silent Syncro-Mesh transmission with selective free wheeling as standard equipment at no extra cost. A control button on the instrument panel enables the driver to use the free wheeling device only when he desires, and he is thus able to utilize the full braking power of the engine when desired.

The front end offers a radically changed appearance, with a new type radiator, a radiator grille built integral on all models, a double tie-bar arching gracefully between the fenders, on which are mounted bullet-shaped headlamps and a trumpet-type horn just beneath the left headlamp. All models have adjustable hood ports

chrome plated on all the sport and de luxe models, and all have cow ventilators controlled from the driver's seat.

With the new streamlined bodies, the external sun visor has been eliminated, and its purpose is now served by an internal visor adjustable to any position in front of the driver. The left front window also has an equalizer built in so that the driver may adjust the window with little effort. On the top rail of the instrument panel is a removable ash tray for the convenience of front seat passengers.

Robe rails, silk assist cords, window shades, arm rests and ash trays on both sides of the rear seat, dome light, foot rests, large door pockets and many other big car refinements are standard with various models in the new line.

FILES APPEAL IN REMAPPING CASE

**Attorney General Says State
Only Has Jurisdiction
in Apportioning**

Contending that congressional reapportionment is a matter resting with the state legislature rather than in the courts, Attorney General Oscar Carlstrom has appealed to the State Supreme court from the ruling of Judge Edward D. Shurtleff in Boone county circuit court, who recently held Illinois' new remapping law unconstitutional.

Carlstrom's appeal declared that the petition of Frank T. Moran, Belvidere newspaper publisher, and

G. E. Gasper, who brought suit as taxpayers, is political in its character and "is not to protect any property or civil rights."

"No Jurisdiction"

"Courts of equity have no jurisdiction to interfere in political matters," Carlstrom's appeal stated.

"The allegation of injury to the complainants as taxpayers is too trivial to give a court of equity jurisdiction to interfere in political matters."

A ruling on the appeal will be sought in the December term of the high court so that the way may be cleared for the filing of nominating petitions in January.

Passed by Assembly

The congressional reapportionment law was passed at the last regular session of the Illinois general assembly. It was the first time

in 30 years that congressional districts in Illinois had been remapped.

Under the remapping the state was divided into 27 districts. At present Illinois elects 25 congressmen and two congressmen at large.

Practically every district in the state is effected by the remapping.

The way those Japs and Russians refrain from attacking one another, but take it out in shadow boxing, gives rise to the suspicion that they may have an agreement among themselves back in the bushes somewhere.

The bigger the market
the better the results.

**RENT THAT EXTRA ROOM
PRESS WANT-ADS for Results**