

TWEN

CHA

Ne
house
pared
ten,
the p
Th
by t
entai
schoc

Both Hands Cut Off in Corn Shredder

Word was received by Coach Mark D. Wilson of Waukegan Township high school, immediately after the charity football game with Deerfield-Shields, October 30, that his brother had met with an accident on the Wilson family farm near Macomb, Ill.

Coach Wilson lacked full particulars of the accident but knows that his brother's both hands had been severed in a corn shredder while he was preparing the corn for silage. Coach and Mrs. Wilson left at once for Macomb. They have returned.

Collette Soeurs

Dressmaking

Remodeling

Altering

GOWNS - SUITS - WRAPS
COATS

individually designed.
Moderates rates

For appointment phone
Winnetka 1011

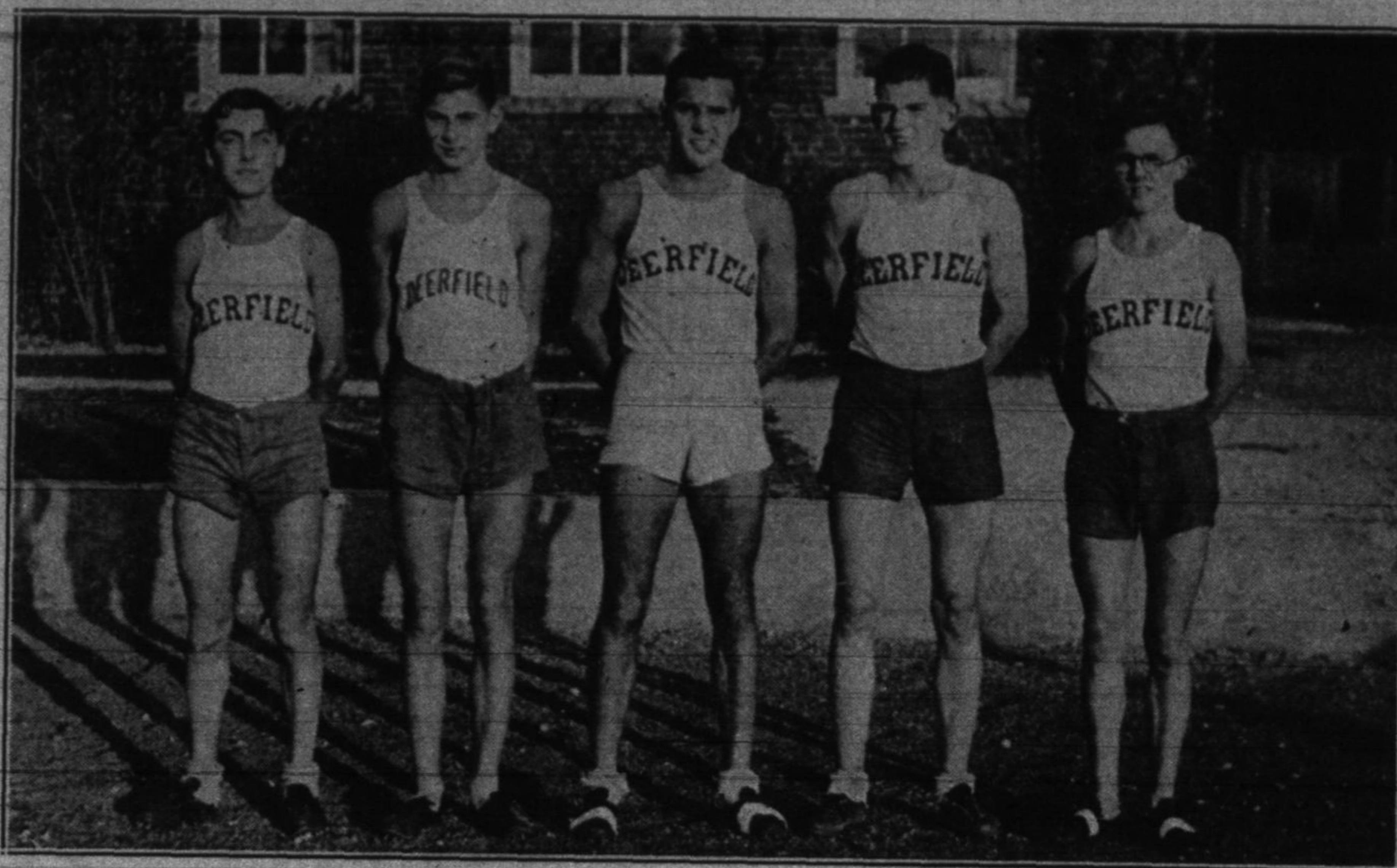
An Hotel of True Character



A discriminating clientele gives evidence of satisfaction with our choice hotel rooms, suites, and kitchenettes. Here . . . in a beautiful suburban setting only 20 minutes to the Loop . . . you may enjoy whatever type accommodations you wish . . . with atmosphere and furnishings of a most elegant taste. A well planned program for social activities . . . swimming pool free to guests. Turkish bath, . . . beauty salon. Our unexcelled cuisine is prepared by one of Europe's foremost maitres de hotel—formerly serviced to Mussolini. Inspect our superior accommodations and be convinced of their desirability and moderate rentals.

The Sovereign.

6200 Kenmore at Granville
Phone Briargate 8000
H. L. Johnson, Mgr.



DEERFIELD-SHIELDS CROSS-COUNTRY TEAM
Left to right—Ambrose Cantagello, William Larson, Fritz Kaumanns, Kenneth Woods, and Marvin Brownlee.

NIGHT SCHOOL CLASS ENROLLMENT OF 668

English and Women's Gym Classes Top List

The latest reports show that the enrollment in different courses in night school is 668. Of course there are many students taking several courses, so the number of students attending is not as big as this. The most popular subject is English, in which course ninety-five students enrolled.

The enrollment in other courses is as follows: auto shop, thirty-two; bookkeeping, thirty-one; bookkeeping and mathematics, twenty-six; carpentry, twenty-six; sewing, fifty-six; English, ninety-five; French, twenty-seven; home hygiene, sixteen; mathematics and mechanical drawing, thirty-five; public speaking, thirty-two; Spanish, seventeen; stenography, seventy-two; typewriting, eighty; men's gymnasium work, forty-four; and women's gymnasium work, eighty-nine.

The class in child study has been discontinued for lack of members.

"We need more members in the hygiene and care-of-the-sick classes and can always find room for students in the gym classes, though one can enroll in any class," says Mr. Schneider, evening school director. "It is not advisable to enroll in the typing and stenography classes this late in the term unless to brush up on work previously taken."

A small sum is charged to students residing within the high school district, but it is returned if the student is present during eighty per cent of the sessions. All but a small part of this is paid, which the school has agreed to wait for because of the students' financial difficulties. The total registration fees have been \$488.

The courses will end about March 9, 1932.

START WORK ON FIFTH BUILDING

Notable Progress Being Made in Erecting of World's Fair Structures

With exposition trustees manipulating the heavy wrenches, the first steel column for the Electrical group—fifth structure of Chicago's 1933 World's Fair, was bolted into place on Northerly Island last week.

Although the structure will not be completed until next spring, and will not open to the public until June 1, 1933, a large amount of the exhibit space has already been contracted for, according to General Manager Lenox R. Lohr.

Many Exhibitors

The exhibitors include: the American Telephone & Telegraph Co., General Electric company, International Telephone and Telegraph Co., Radio Corporation of America, Western Union Telegraph Co., Westinghouse Electric & Manufacturing corporation, Stewart Warner corporation, Curtis Lighting, Inc., Federal Electric company, Inc., Sangamon Electric company, Hammond

Clock company, the Hoover company, United Air Cleaner corporation, Waters Genter company (Division of McGraw Electric Co.), and Van Cleef Bros.

The Electrical Group was designed by Raymond Hood of New York. It will be two stories high, 1,200 feet long and 300 feet wide and consist of three units, devoted respectively to radio, to communication, and to power generation, distribution and utilization.

Construction

The units will be constructed of steel framework and steel and special wallboard exterior, with white, yellow, red, black and blue predominating in the color scheme. Paved terraces and hanging gardens will embellish the structure.

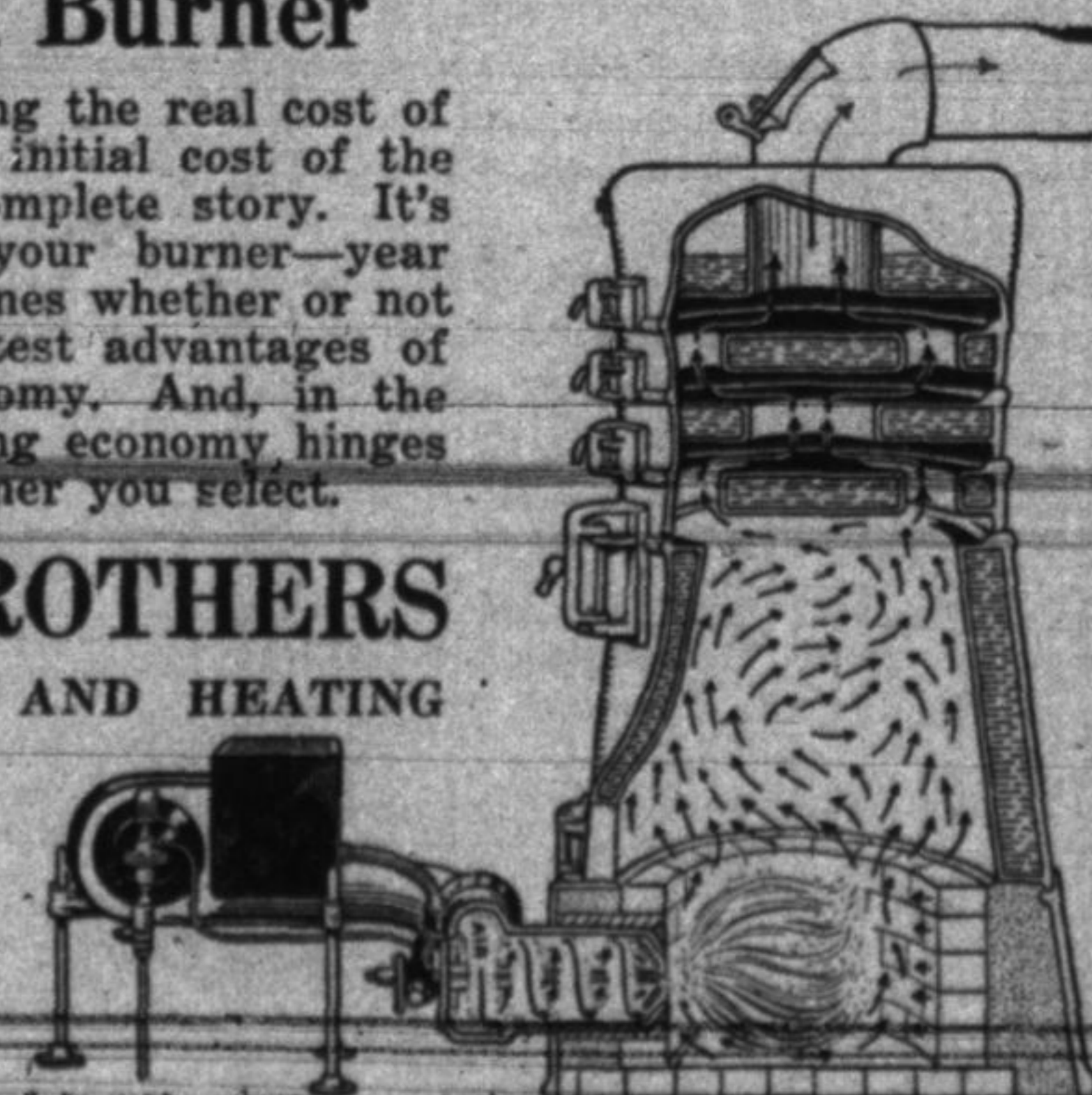
The Electric power unit will consist of a huge G-shaped building, facing west, rising from a series of terraces and surrounding a landscaped court, back of which will run a great hall, 500 feet long and 60 feet high. An electrical cascade will play on the upper terrace. The radio and communications unit will form an E-shaped structure, facing the lake.

Electrol Oil Burner

When it comes to figuring the real cost of oil heating, it's not the initial cost of the burner that tells the complete story. It's the cost of operating your burner—year after year—that determines whether or not you will enjoy the greatest advantages of automatic oil heat economy. And, in the final analysis, this heating economy hinges on the design of the burner you select.

MORAN BROTHERS MODERN PLUMBING AND HEATING

Tel. H. P. 1404
358 Central Avenue
Highland Park, Illinois



The fr

TRA
T

If
the ki
Evans
those
have a
New
and I
was de
has be
viso,
feated
New
over I

Now
New

Wol
and v
tioned
wants
boy to
ing ba
will se

Opp
will b
name
the gr
Flemi
ter, n
Fell v

Jac
Nordl
Foste
maine
in th
know

For
Deerl
agins
idea.
quite
but v
umph
happ
(1920
had
beats
Deer
Trie
cond
verse