

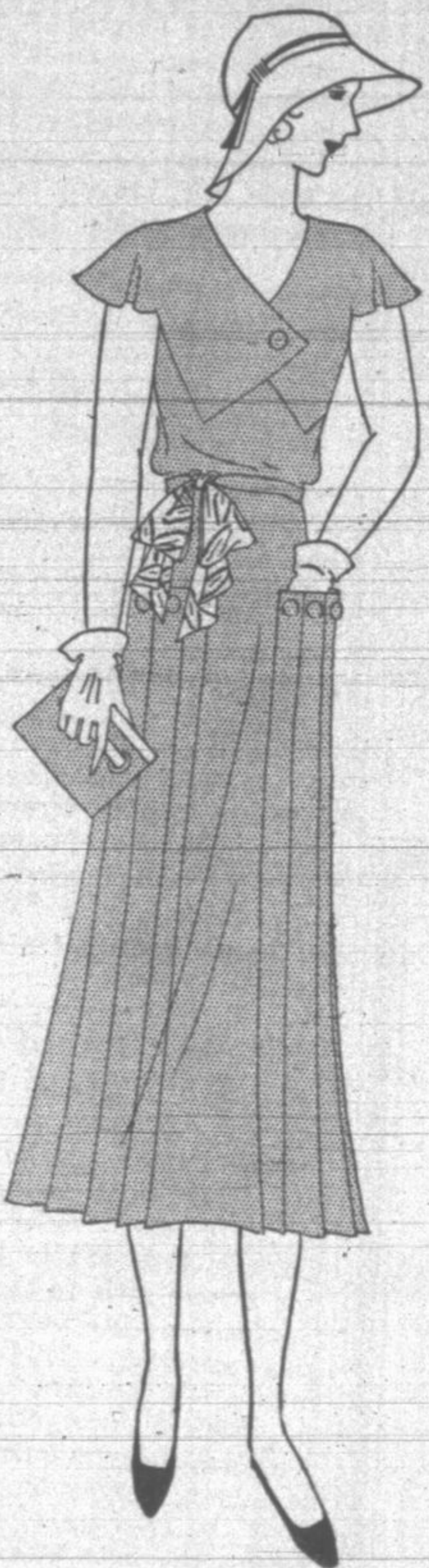
EVANSTON STORE • CHURCH AND SHERMAN
MARSHALL FIELD & COMPANY

PASTELS FOR SPORTSWEAR... JACKETS A HIGH STYLE
 PLEATED INSETS MUCH FAVORED... PRINTS IN VOGUE

Points from our Fashion Report.
 Illustrated by these 4 values

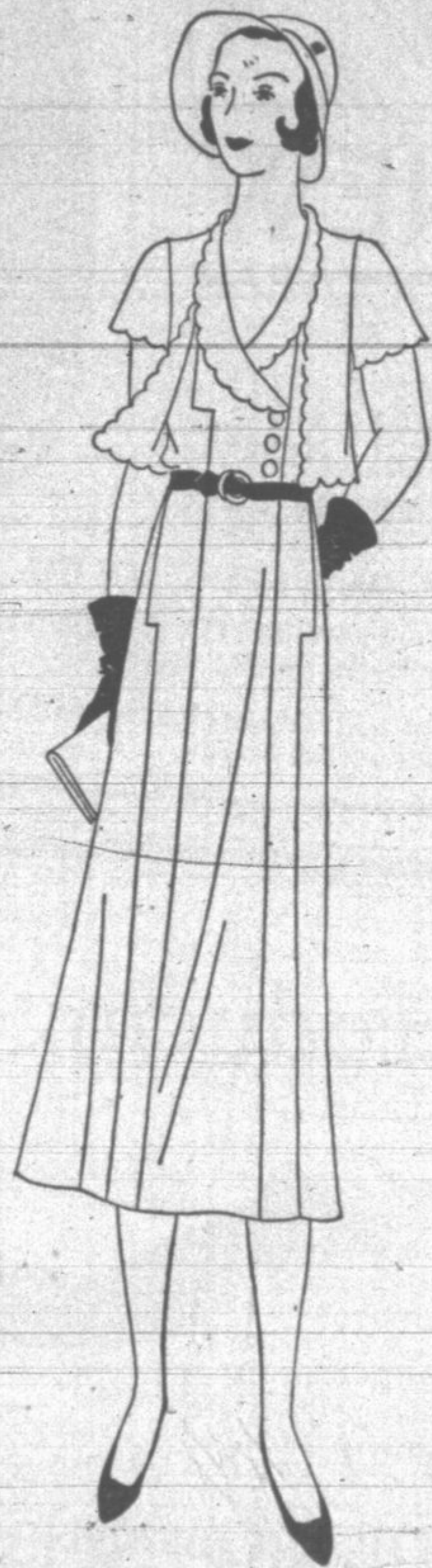
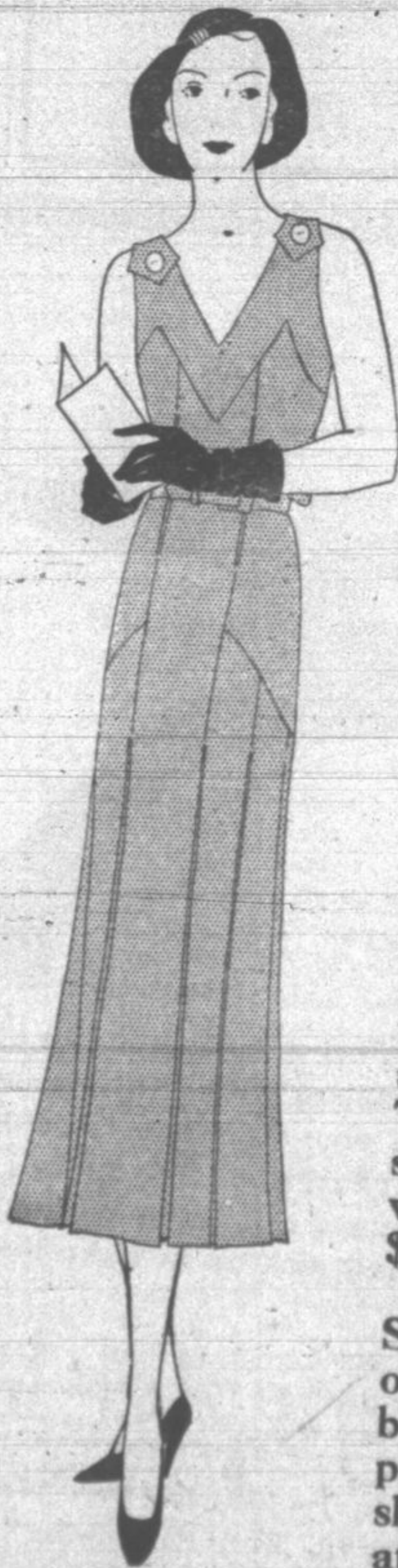
FROM AN IMPORTANT
 SELLING OF 8 SPECIALS

\$15.75 and \$21.75



Crepe shan, one-piece frock with cape sleeves, and figured tie. In assorted pastel shades. Comes in sizes 14 to 20 at \$15.75 (above).

Coin dot, two-tone: navy, brown or black with white, in flat crepe. A two-piece dress in 14, 16, and 18 at \$21.75 (at right).



Flat crepe dress... washable... with a sleeveless jacket. Trimmed with self scalloping. 11 to 17, in white, flesh, maize, \$21.75 (above).

Sleeveless tennis dress of tub silk, with a low back and inverted pleats in blouse and skirt. In sizes 14 to 18 at \$15.75 (at left).