

CHARACTER
INFLUENCING

THIRD YEAR
CAMP

CITIZENSHIP
TRAINING

MA-KA-JA-WAN

PEARSON, WISCONSIN

OWNED AND OPERATED BY THE NORTH SHORE AREA COUNCIL—BOY SCOUTS OF AMERICA

GENEROUS N. S. CONTRIBUTORS PROVIDE CAMP ENLARGEMENT

Parents, Friends
Invited to Visit
at Ma-Ka-Ja-Wan

Located 290 Miles North

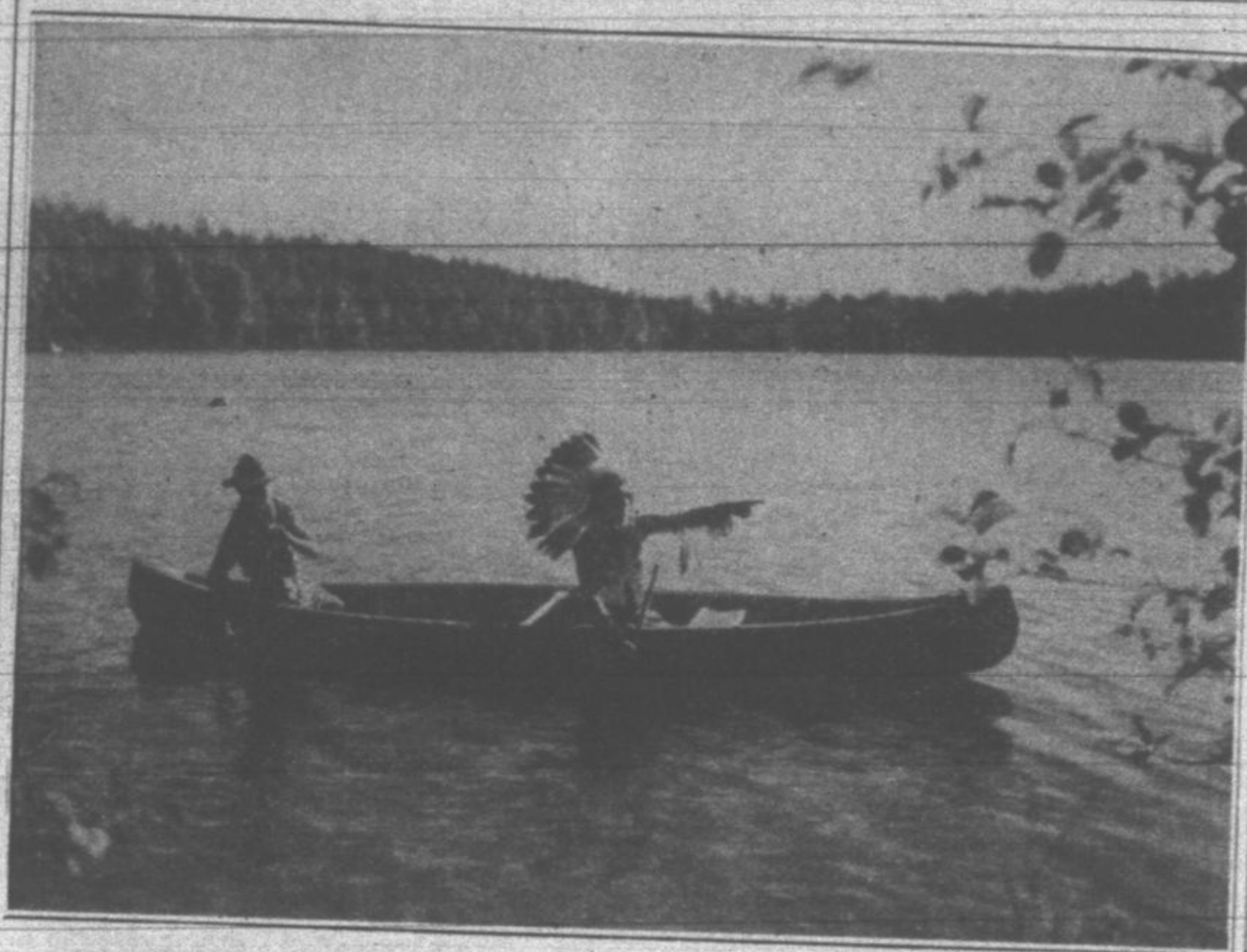
Parents and friends of the North Shore Area Council Scouts are urged to visit the beautiful campsite of Ma-Ka-Ja-Wan. It is situated 290 miles north of Highland Park in the most desirable section of the great vacation land of Northern Wisconsin. The entire Spring Lake lies within the 360 acres comprising the campsite. Thousands of acres of woodland stretch in every direction making the scenic beauty itself very well worth seeing. Parents and friends are particularly urged to inspect the camp, its management, its program and its facilities to see the fine camp their boy is privileged to attend.

LOCATION: The campsite is located on Spring Lake in Langlade County, Wisconsin, seventeen miles southeast of Elcho and twenty-three miles northeast of Antigo. The camp road is off of Route A about one mile south of where Route A joins Route 55.

AUTO ROADS: There are two good highway routes of scenic beauty leading to camp. Both Routes take you up U.S. Route 41 to Oshkosh, Wisconsin, then north on Route 26 to Clintonville. From there your best routes are these: 1st, Go to Shawano, join Route 55 and follow it through the Menominee Indian Reservation and about thirty miles beyond to Route A, turn south one mile to camp entrance. 2nd, From Clintonville continue north on Route 26 five miles past Antigo to Route A, follow it northeast about eighteen miles to Camp Ma-Ka-Ja-Wan entrance. The entrance is marked. The Old Muskie Inn at Elcho on Route 26 about twenty-three miles north of Antigo affords fine overnight accommodations for visitors.

Camp teaches the Scout worthwhile things to do; how to swim and how to paddle a canoe; to build a fire and to put it out; handicraft that interests him—woodcraft, leaf printing, model ship building; activities that appeal—archery, photography, tree planting, dramatics, nature lore.

Camp Ma-Ka-Ja-Wan opens June 29th. Register Now!



Pointing the way to Camp Ma-Ka-Ja-Wan, North Shore Area Council Boy Scout Camp, where hundreds of boys will be going soon.

Health, Safety Paramount With Scout Campers

The Health and Safety of every Scout and Leader that goes to Ma-Ka-Ja-Wan is first in the minds of those planning and managing the camp. The Camping committee has spent much time and expense in getting the best, where it has been a question of expense or health. A resident doctor is ready 24 hours a day to be of aid in emergency. He is the health advisor to the camp management, and health instructor to the campers. Every safety precaution is taken against water accidents and other possible hazards. Foods are the best, water is carefully tested every week; the whole camp is checked before camp by the State Health department.

Keith Roberts Heads Camping Committee

Keith Roberts of Glencoe, is the chairman of the North Shore Area council camping committee which supervises Camp Ma-Ka-Ja-Wan. On his committee are the following men:

- Wilmette—D. P. Moreton
- Winnetka—Dr. H. A. Orvis
- Highland Park—Byron E. Schumacker

Family Camp for Troop Leaders Newest Project

A Family camp situated in the woodland on the opposite side of the lake from the boys camp, is now being constructed. To this camp, the Scoutmasters and Camp Leaders can bring their families to camp with them. The many volunteer leaders can in this way be with their families and at the same time be able to serve the boys of their troop in camp. There will be five cabins and five 10 x 12 tents at the camp. The cabins will be 14 by 22 feet with three rooms and a porch with stove heat. Tents and cabins will be furnished with beds, stoves, chairs, refrigerator, ice, cooking utensils, and dishes. All families need to bring are blankets and personal items. They will furnish and cook their own food. The rent for either tent or cabin is \$3 for the twelve day period, payable at the time the cabin is reserved at Scout Headquarters.

Dear Dad—"Send your son and heir for sun and air at Camp Ma-Ka-Ja-Wan."

Signed—Son and Heir

- Highwood—G. Dorette
- Libertyville—W. A. Nicholas
- Deerfield—C. E. Piper
- Northbrook—Joseph Kortman

\$35,000 Invested
in Camp Property

Have Complete Equipment

The people of the North Shore and west North Shore communities through their generous contributions to the North Shore Area Council Scouting have made possible one of the finest Scout camps in the country. The finance campaign recently completed provides for expansion of campsites equipment, buildings and development of a family camp for Scoutleaders. A more adequate kitchen, satisfactory refrigeration and sanitary systems, additional boats and canoes, tents and tent floors, docks, and cots will be included. The total investment will exceed \$35,000.00 by the time the camp opens. The permanent camp buildings are briefly described below:

MAIN LODGE: The Main Lodge is 32 feet by 64 feet in size with a large kitchen built on one side and a wide screened-in porch running the entire length of the building on the other side. The large five foot stone fireplace on the north end is a beautiful structure with the mantel a solid piece of virgin white pine six inches thick and 36 inches wide covering the entire top. The dining room and the kitchen are completely equipped.

HOSPITAL: The Hospital is equipped with living quarters for the resident doctor and a separate Hospital room with modern facilities.

CAMP TRADING POST: The Camp Trading Post will have a leader in charge to handle all camp equipment, camp bank, sale of candy and supplies and camp library.

CAMP MUSEUM: The Camp Museum will be situated in a new north wing of the Hospital building. In this 20 foot by 30 foot room Scouts will have on display interesting nature specimens and handicraft exhibit.

HANDICRAFT SHELTERS: Two 20 foot by 30 foot wall tents are fully equipped for many phases of handicraft work.

WASH HOUSE: A large sanitary wash house and a latrine with running water is centrally located for the campers. Wash stands and latrines are also constructed for each village.

UTILITY BUILDINGS: The power house, the headquarters buildings, the ice house, the water tower, the cook's cabin and the store house are all a part of the complete building equipment at Ma-Ka-Ja-Wan.

"A DOLLAR A DAY—WILL PAY YOUR WAY!"