

FVANSTON STORE • CHURCH AND SHERMAN MARSHALL FIELD & COMPANY

Buy any type of lingerie you like in this wonderful selling

LINGERIE

Every Piece

\$3.45

All Decennial Values . . . featuring prices lower than the level of 1920-21, quality for quality



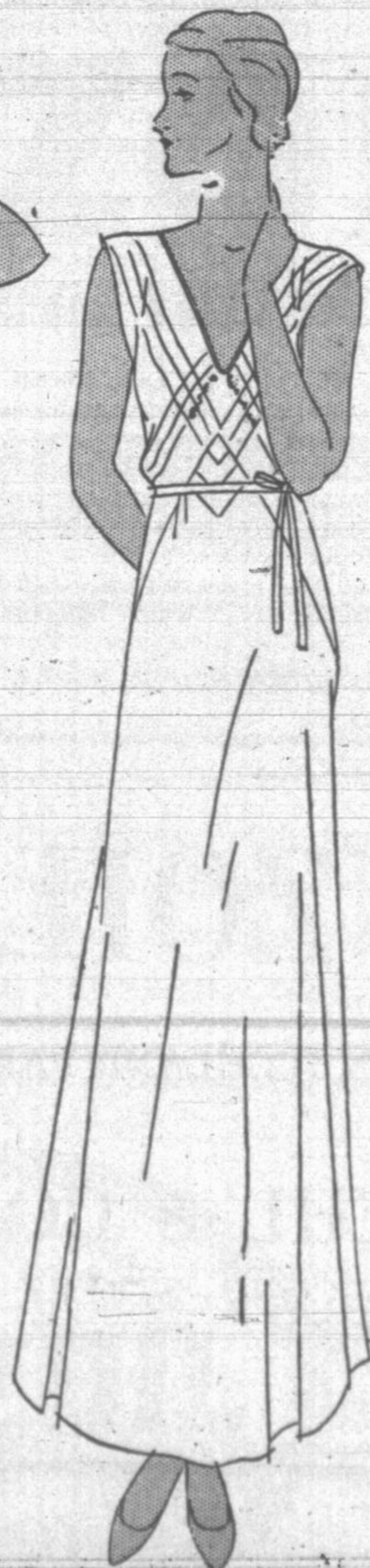
Above

An envelope chemise, in the pantie style, which comes in tea-rose only and is trimmed with the most attractive soft lace.



Right

A costume slip in tea-rose or white with ecru lace, fitted lines, shadow-proof panel in back . . . dainty embroidery to finish it.



Above

A charming bandeau set which comes in tea-rose or white crepe, trimmed with Alencon patterned, ecru lace. Pantie drawers.

Left

A gown of French finish crepe in tea-rose or blue, trimmed with fine tucks and hemstitching. A splendid value, most attractive.

19 - h - m - r - g - e - y - t - r - s - t - 11 - 1 - 7 - 1 - 1