

EVANSTON STORE • CHURCH AND SHERMAN  
**MARSHALL FIELD & COMPANY**

A Guide to EASTER SHOPPERS!

Solve the problem of what to wear . . . at small cost . . . in this store.

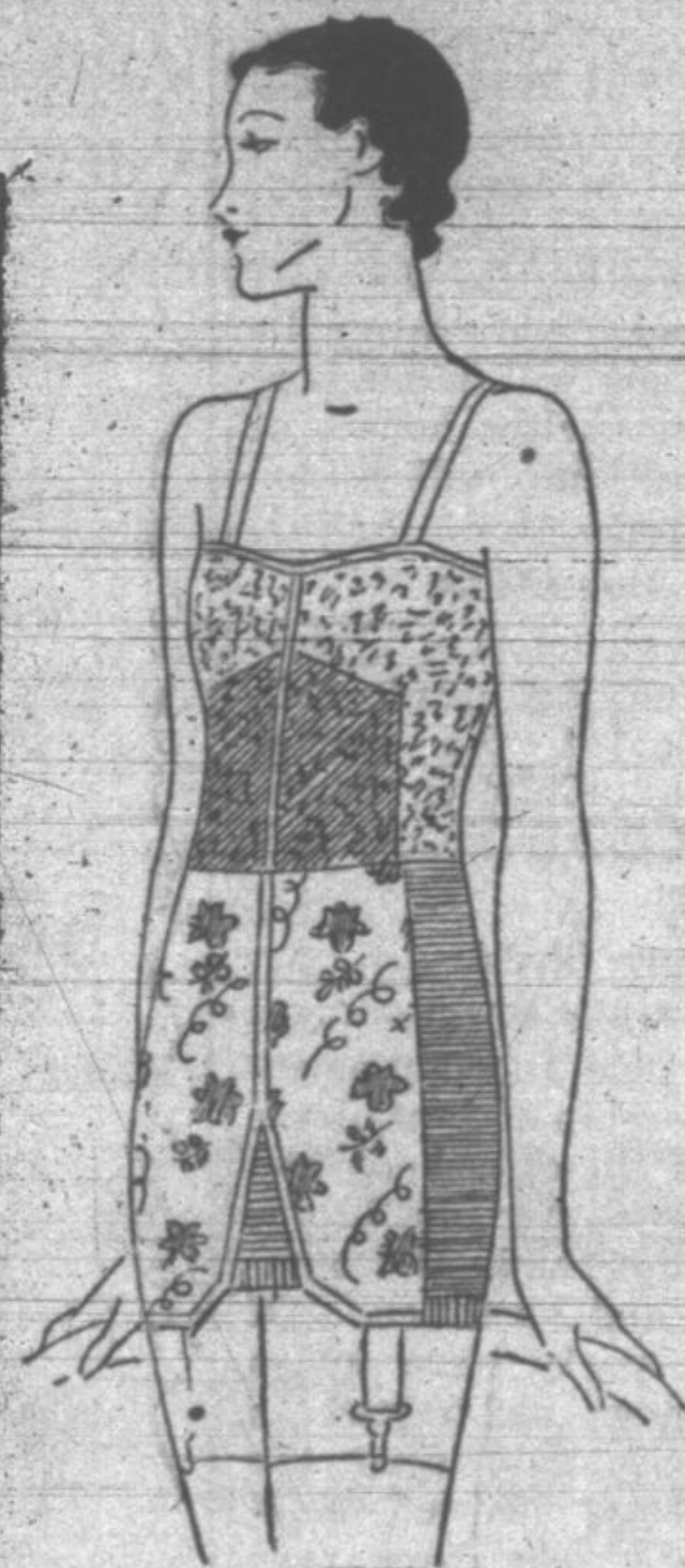
# DRESSES

How much smarter  
 your Spring costumes  
 will look if you wear



Special  
 Savings  
 \$25

typical of the  
**MANY**  
 values . . .  
 ON THE  
 FOURTH  
 FLOOR



**THIS GIRDLER, \$7**  
 Step-in type, of silk broche and  
 hand loomed elastic, sufficient-  
 ly boned to give firm support.  
 With it . . .

**THIS BRASSIERE, \$1.65**  
 Dainty lace . . . and has a semi-  
 uplift bust contour.

**SCALLOP COLLAR . . .**  
 Lingerie . . . Canton  
 afternoon . . . in black and  
 navy. Size . . . to 20.

**SILK ENSEMBLE . . .**  
 In plain and polka combinations.  
 Separate jacket. In black, navy  
 and brown. 14 to 20.

TYPICAL OF MANY  
 VALUES . . . ON  
 THE THIRD FLOOR