

POWERED BY **AUBURN** LYCOMING

**Five New Bodies—On a New
127 Wheelbase Straight Eight Chassis**

Five-passenger two-door Brougham. Entrance to front and rear seats through one large door without tilting front seats. The greatest value on the market; new in design; new in improvements; a long wheelbase, powerful Straight Eight.

\$1030

Delivered

\$945—f. o. b. Connersville, Indiana

AUBURN introduces new features, improvements and advantages never before obtainable in any car. Dating from today, all comparison of automobile values must be completely revised. Auburn has chosen the present business period as the opportune time in which to advance and grow. This is possible in one and only one way; Auburn must increase the buying power of the consumer's dollar beyond all comparison. At the risk of sounding extravagant, we assure you that Auburn has gone to greater length to provide more rugged, rigid enduring construction; more efficient performance, safer roadability and more accommodations for the comfort and convenience of passengers than have ever been offered to the public. We submit the car itself as proof.

AUBURN AUTOMOBILE COMPANY, AUBURN, INDIANA

5-pass. 2-door Brougham \$945; 4-door Full Sedan \$995; Convertible Cabriolet \$1045; Convertible Phaeton Sedan \$1145; Business Man's Coupe \$995, f.o.b. Connersville, Ind. Equipment other than standard, an extra cost.

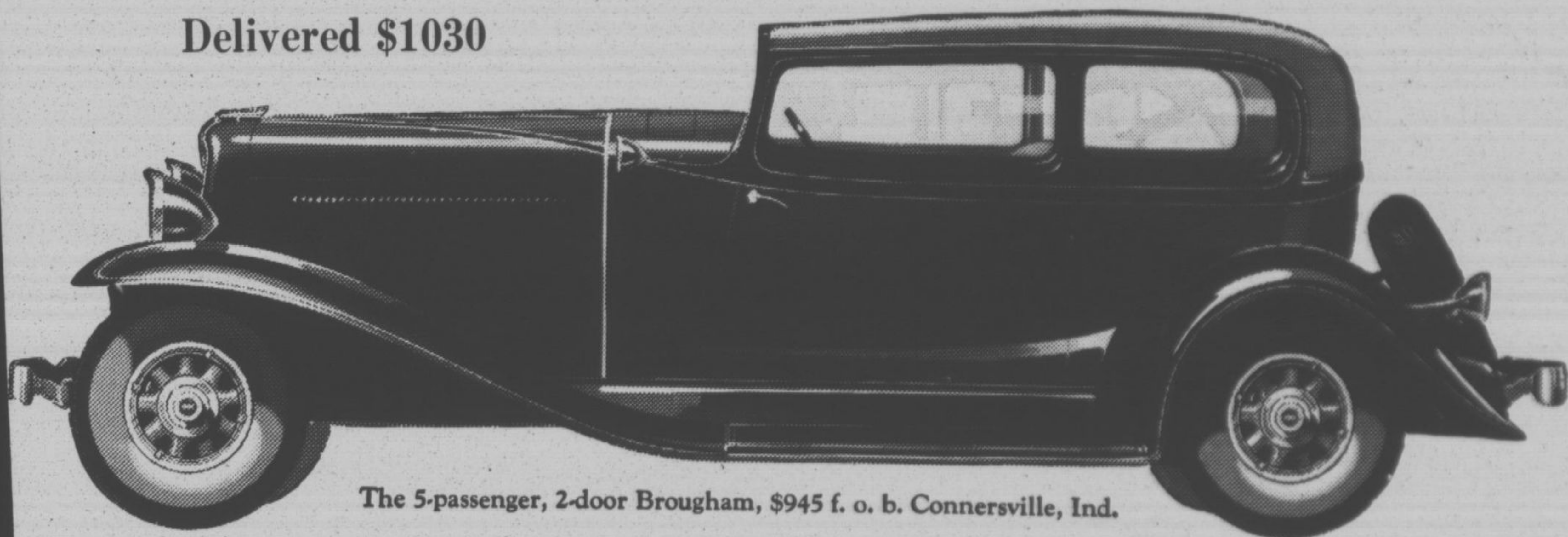
Also Custom Models which include free wheeling

Five body styles with refinements and appointments that represent the utmost in luxury: optional colors; large tires with white sidewalls; special upholstery, either Broadcloth or Kid Mohair; walnut finish instrument board and walnut finish mouldings; etched finish for the instrument panel; special carpet; all-chrome lamps; corner reading lights in Sedan and Brougham; robe rail, cigar lighter, chrome running board mouldings and tan top material of highest quality. Five-passenger 2-door Brougham \$1145; Business Man's Coupe \$1195; Convertible Cabriolet \$1245; Four-door Full Sedan \$1195; Convertible Phaeton Sedan \$1345, f.o.b. Connersville, Indiana.

Reasons for the Incomparable Value of the New Auburn:

- X-type Cross Member in frame
- Silent Mesh Transmission with helical cut gears
- 127-inch wheelbase
- 98 horsepower
- Straight Eight perfected after 7 year's experience
- Automatic chassis lubrication
- Frame side rails 8" deep, 5-32" stock
- Larger engine bore
- Steel-draulic brakes
- Four 2-way Lovejoy hydraulic shock absorbers
- Roller-bearing, cam and lever steering
- Widest door on any car on Brougham and Coupe
- Shortest turning radius of any car of comparable length
- Entire body front, all steel
- Adjustable front seats
- Body specially insulated
- Hydrostatic gas and oil level gauge

Delivered \$1030



The 5-passenger, 2-door Brougham, \$945 f. o. b. Connersville, Ind.

Highland Park Auburn Co., Inc.

New Address

21-23 South Second Street, Highland Park

Telephone

Highland Park 2830