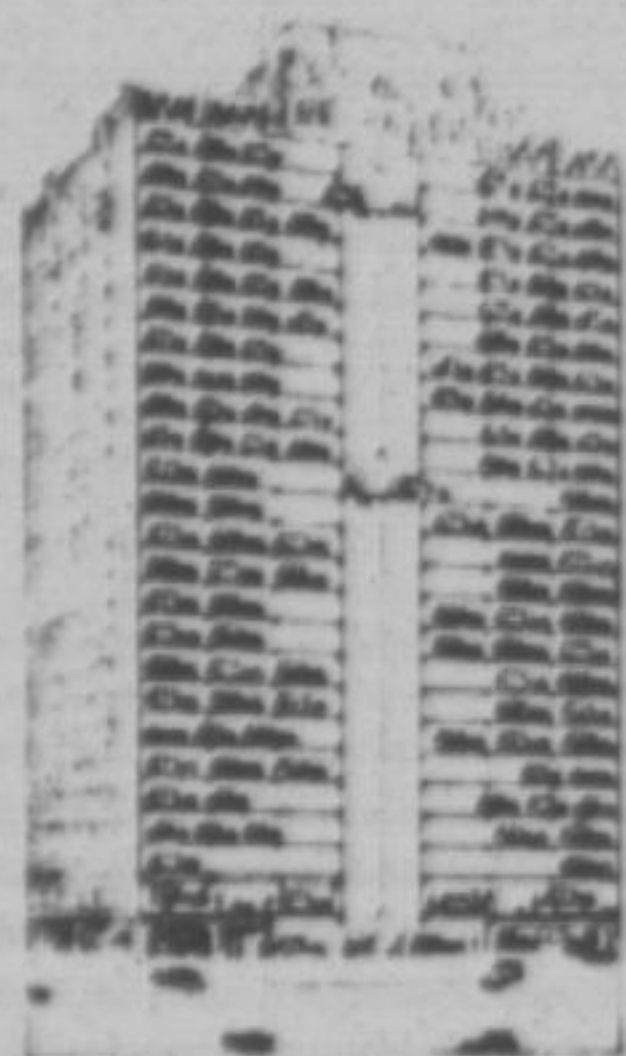


Illinois Commerce Commission Report

Collection of \$71,633 in fees, conducting of 1,214 hearings and issuance of 2,063 orders, together with appraisals, inspections, and many other activities for the welfare of the public, comprised the work of the Illinois Commerce Commission during the year ended June 30, 1930, the re-

port for which period has been made public by the commission. The commission immediately upon its appointment by Gov. Louis L. Emmerson Aug. 10, 1929, centered an attack on its docket to clear it of old cases. In this attempt the commission was successful, the report states, so that the close of the year last July saw few such old cases remaining on the docket.



Electric GARAGES

BUILT LIKE FINE HOTELS

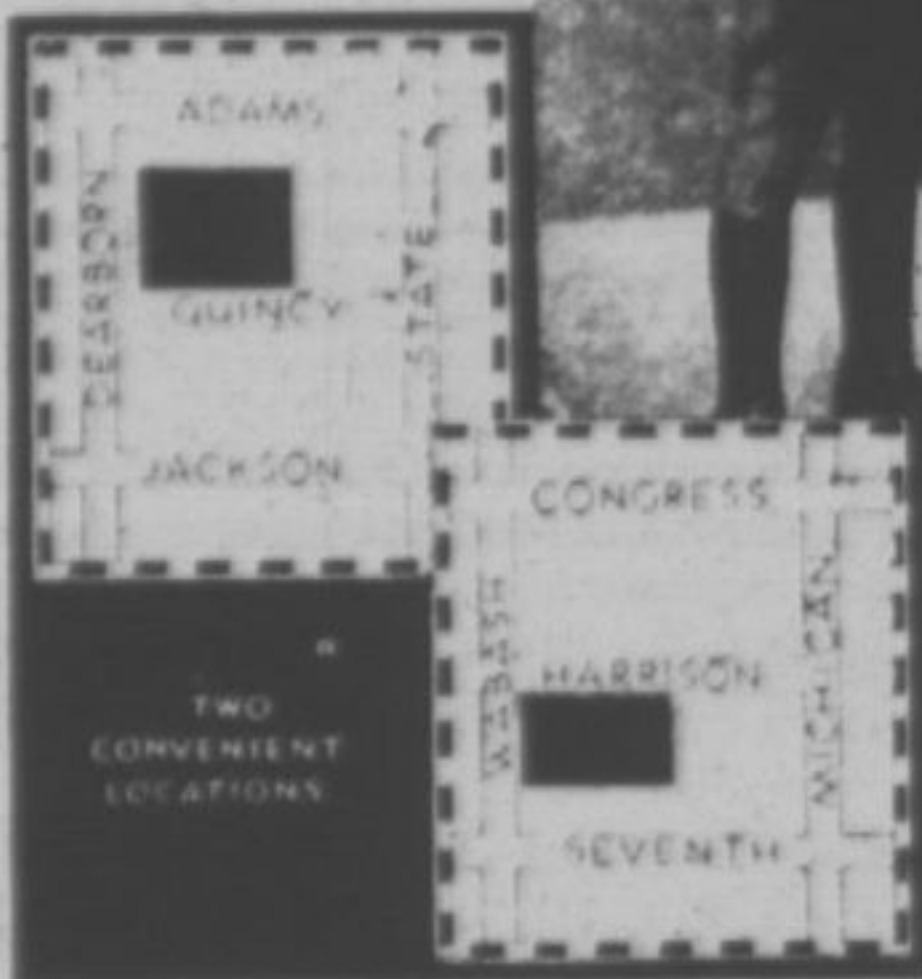
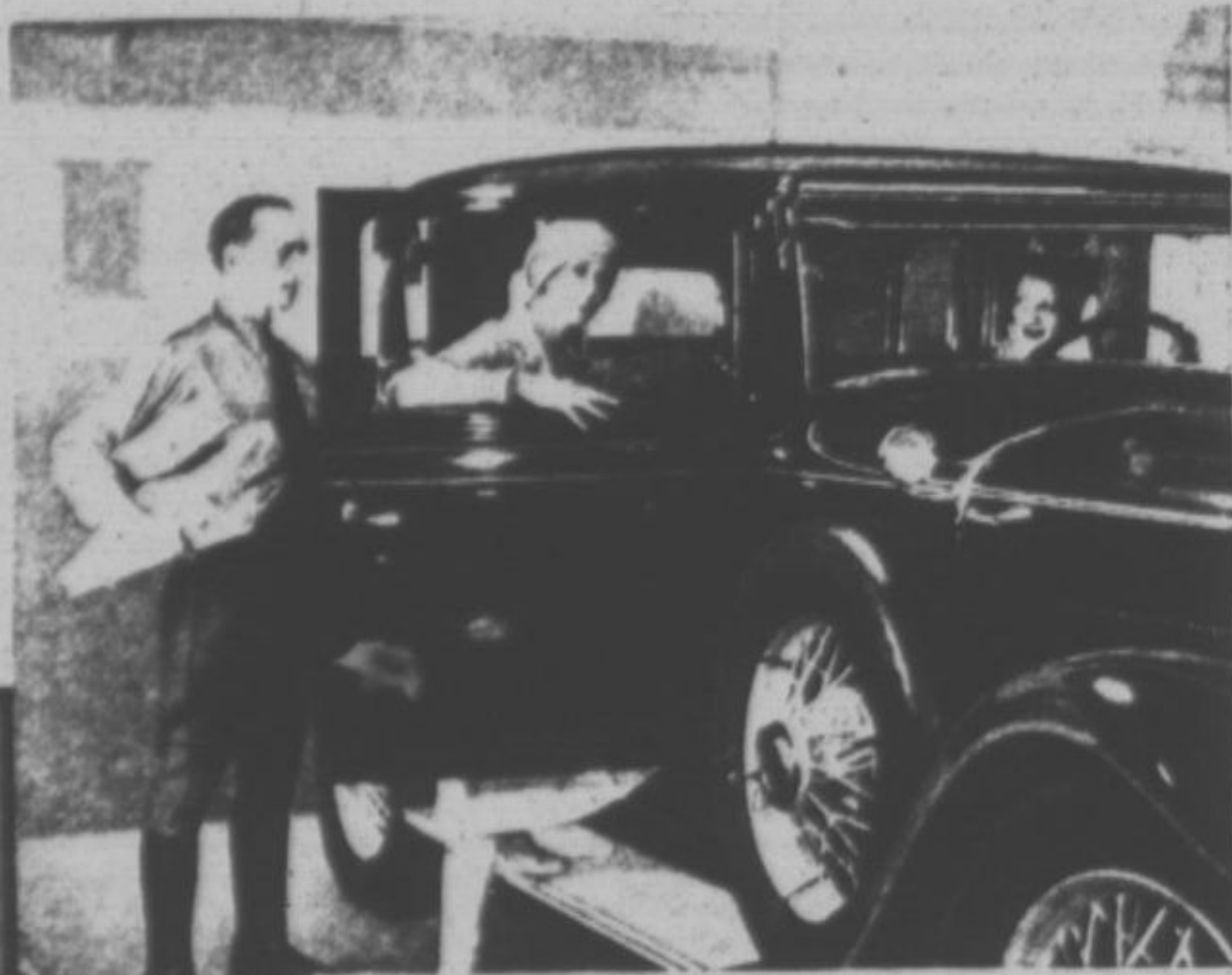
... so Convenient for Shoppers

Women everywhere praise their *cleanliness*, their *quick action*, their *convenient locations*. These new Electric Parking Garages, at 30 Quincy Street and at Harrison and Wabash, have ended the Loop shoppers' parking problem.

In these unique garages electricity parks their cars, untouched by human hands. No dirty drivers leave grease on gears, seat or wheel.

Here cars are parked or delivered *quickly*, without confusion or delay. Here, close to famous State Street stores and smart Boulevard shops, a special package service signs for shoppers' parcels, and cares for them until the shopper is ready to leave. Here are rest rooms, writing rooms, telephones, lockers, special facilities as attractively appointed as a fine hotel.

See how close these two Parking Garages are to your favorite stores and shops. Plan to visit one today!



QUINCY PARKING GARAGE
30 Quincy Street
Webster 3600

HARRISON PARKING GARAGE
East Side of Wabash at Harrison
Harrison 4808

UNITS OF NATIONAL PARKING GARAGES, INC.

LESS IMMIGRATION SHOWN IN REPORT

Effect of Order Barring Aliens Likely to Become Public Charges

Those experts who profess to believe that the government can do nothing to help the economic situation ought to be interested in the recent report of Harry E. Hull, U. S. Immigration Commissioner to the effect that the order of the administration against admitting aliens who might become public charges caused a 36 per cent decline in immigration during September. During the month 17,792 immigrants were admitted as against more than 28,000 in the same month in 1929.

The full effect of the order will not be left for another month or two according to Mr. Hull with respect to the labor coming from Europe, especially, for the reason that immigration visas previously issued are valid for four months. It is expected however that from now on labor immigration from Europe will be considerably reduced.

Worse in Other Countries

It might be argued that the laborers have slowed up in coming because of economic conditions in the United States but it is to be remembered that economic conditions in other countries are in most instances much worse than in the United States. Mr. Hull says that the invasion of the United States by cheap Mexican labor has almost ceased and that labor immigration from Canada is also at the vanishing point.

This decrease in immigration labor, brought about by administration order, is one instance of the effect of governmental attempt to help the economic situation. Now when there are millions of unemployed, or working part time in the United States we do not want additional labor coming in from the countries of Europe which are not so well off as we are.

Our system of restricted immigration in America has doubtless served to lessen the effects of the present era of unemployment. Without the system there would have been several million more alien workers in the United States today seeking jobs.

A. MENONI

CARPENTER AND BUILDER
Screens and Doors Repaired
Sharpening Tools
Any Outside Work
Highland Park, Ill.
153 N. Second St. Tel. H. P. 457

GREENSLADE Electric Shop

Electrical Contractor

514 Laurel Ave. H. P. 555
THOR WASHERS
APEX CLEANERS
Telephone 555 Highland Park

Good Management Is Speeding Up Work on Illinois State Hospital

By scientific supervision, work on the Illinois state hospital, now under way, is so arranged that carpenters, brick layers, plumbers, steam-fitters, electricians, water-proofing workers and laborers are all working simultaneously to speed up the completion of the veterans' ward building. The crew ranges around 35 to 40 men, continuously employed.

To keep the work going during winter months, the division of architecture and engineering in the state department of purchases and construction have worked out comprehensive schedules for all classifications of the work involved, the supervising architect states. Particular attention is given institution construction, he says, for two reasons: the urgent need of added room for inmates, and Governor Emmerson's insistence upon providing the maximum amount of employment.

Dehydrating Plant Is Installed at Illinois Prison at Stateville

In the interest of economy in providing food for inmates of state institutions, a fruit and vegetable dehydrating plant has been installed at Stateville, the first of a series contemplated at Illinois state institutions. It will enable the prison management to utilize the vegetables that are grown in excess of immediate requirements, and to conserve a vast amount of food material that otherwise would go to waste. At Stateville, on the 2000 acre honor farm, now reaching a high state of cultivation, convicts produce great crops of vegetables to supply that, and other state institutions. By the dehydration process, aside from preventing deterioration, the state will reduce the cost of moving food supplies from a producing to a consuming institution, as it eliminates about 90 per cent of the weight of products treated. Thousands of dollars will be saved each year through the adoption of this system, according to computations made by public welfare officials.

It seems that there is plenty of money in the country, but the trouble is that it doesn't get a move on itself. — Milwaukee Journal.

MR. THOMAS WILL PERSONALLY SERVE YOU

Permanent Waves Hair Dye and Beautiful Haircuts

Prices surprisingly moderate
"Privacy You'll Enjoy"
HOURS 9:00 to 6:30

"YOUR HAIRDRESSER"
Henry's Studio
SUITE 55 East
431 Washington St.
FRANKLIN 9801