

## SEA-LIONS, WALRUS GROUPS IN MUSEUM

Natural Arrangement of Units in New Department; Interesting Exhibit

With the completion of two large habitat groups of animals — one of northern sea-lions, and one of walrus — Field Museum of Natural History recently opened to the public, an important new exhibition hall in its department of zoology. The groups are the largest zoological exhibits so far installed in the museum.

The Hall of Marine Mammals, inaugurated with these two groups, eventually will contain a series of thirteen groups of sea mammals, all mounted in scenic settings representing their natural environment.

Of the two recently opened, the walrus group is installed in a large dioramic case in which is reproduced a scene amid icy islands of the Arctic Ocean. A representation of the midnight sun, accomplished by a specially designed lighting device, appears against the background. Startlingly realistic, due to the use of the most highly developed technique in museum art and lighting, it gives an impression of the far north as it might be seen by a person actually there.

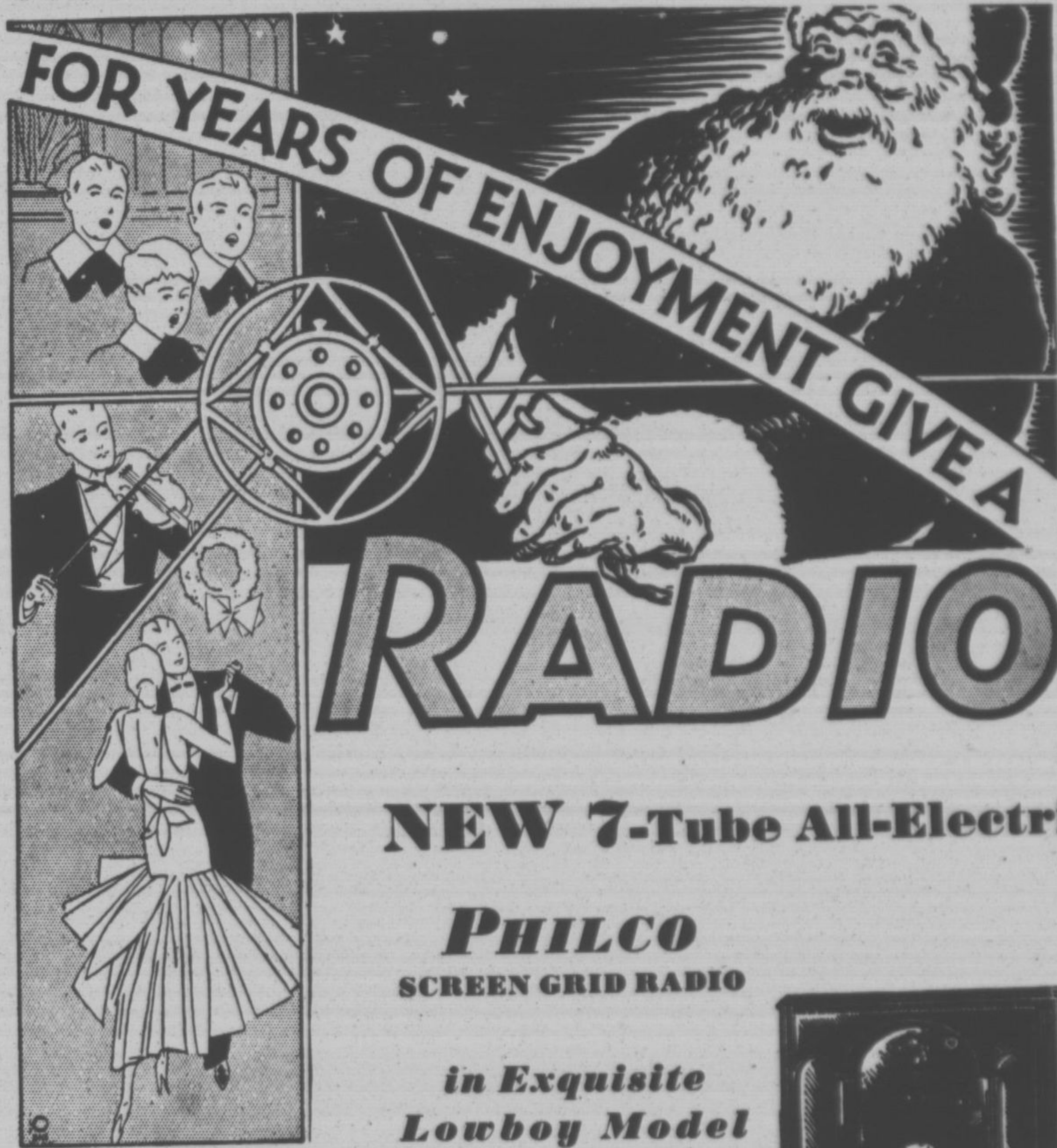
The specimens in this group, including seven walruses of varied size, males, females and young, were obtained by the recent Throne-Graves-Field Museum Arctic Expedition, financed and personally conducted aboard the schooner "Dorothy" by Bruce Thorne of Chicago, and George Coe Graves II of New York. In addition to presenting the specimens, Messrs. Thorne and Graves made an additional contribution, in which Henry Graves Jr. of New York City also participated, of funds to defray the cost of preparing the group in the museum.

The animals were mounted by Jonas Brother of Yonkers, N.Y., who were especially retained for this task. The background for the group is the work of Charles A. Corwin, staff artist of the museum. According to Dr. Wilfred H. Osgood, curator of zoology, the walrus is an extremely difficult animal either to obtain or to prepare properly for exhibition, and the present group probably is superior to anything of its kind thus far accomplished.

The second group, that of the northern sea-lion or Steller's sea-lion, is likewise equipped with an elaborate setting, representing the wild rocky northern coast of the state of Washington. A rolling sea is seen breaking against the shore. Thirteen mounted sea-lions, large and small, male and female, are seen lying on the rocks, one huge bull in a prominent position.

### State Police Ordered to Enforce Stop Signs

Fatal automobile clashes at state highway intersections have led Chief Walter L. Moody of the state police to issue orders for rigid enforcement of the law requiring motorists to observe "Stop" signs. In reports of highway accidents, the predominating cause appears to be the lack of caution on the part of motorists entering or crossing arterial highways.

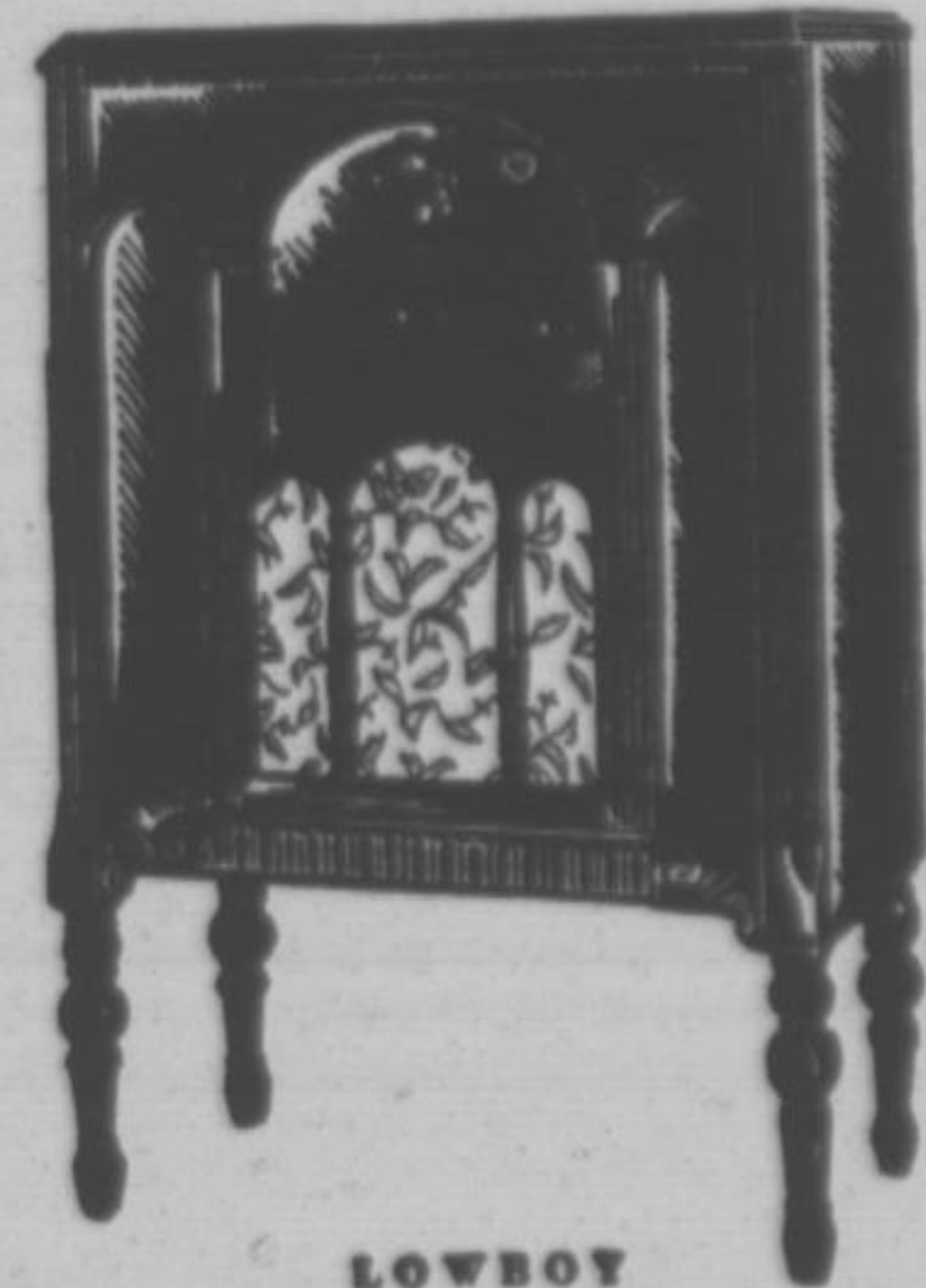


**NEW 7-Tube All-Electric**

**PHILCO**  
SCREEN GRID RADIO

*in Exquisite  
Lowboy Model*

**TAKE ONE HOME  
TONIGHT! Now \$110  
LESS TUBES**



**LOWBOY**

*Most beautiful cabinet ever sold at this price. Real figured and matched butt walnut; V-matched Oriental wood and genuine American Gobelin tapestry over speaker.*



**Complete with built-in  
dynamic speaker**

**ONLY \$49.50**  
*less tubes*

A FLICK of the dial and the whole family is transported . . . to the musical magic of concert halls . . . to cathedrals filled with sweet choir music . . . to prize ring or baseball field . . . to the lilting gaiety of dance halls . . . not only once, but all the year 'round . . . Philco Balanced Unit Radio with Tone Control will bring these to you.

**MOTOR CAR  
ELECTRIC SERVICE**

515 Laurel Avenue

Phone Highland Park 266