

FINE ADDRESS GIVEN BY GEORGE J. McBRIDE

(Continued from page 2)

a program which emphasizes training not alone for college but for good citizenship and vocation as well, and for the enrichment of leisure through nobler forms of enjoyment. No one can visit the school without seeing at once the fine spirit engendered in the young, and the poise and personality secured in preparation for the contacts of life.

Congratulatory Letters

Our principal is receiving letters of congratulation from colleges which select their students for admission from the best schools with the greatest discrimination." (At this point the speaker read two such letters).

"It is probably known to you that Deerfield-Shields has been a pioneer in developing some of the most helpful features of modern secondary education. I refer to the teacher-adviser system, which brings teachers and pupils of a big school into the close personal touch formerly found only in small schools; I refer also to the student council, to assist in student self-government—and to the teaching of educational and vocational guidance in the school. We have gone much further than most high schools in providing vocational training for those who must enter employment immediately upon graduation. The work we are now doing for students who are handicapped in such elementary fundamentals as reading and arithmetic is attracting interest. Teachers from neighboring schools are coming to visit this work. They come also to see the remarkable boy-built houses that our vocational classes erect.

Position of Leadership

From all this you must know that Deerfield-Shields is in a position of leadership, contributing efficiently to

the life-interests of its own students and spreading its influence abroad among secondary schools.

"You must know, too, I am sorry to say, that an attempt has recently been made to cripple the resources of the school through the withdrawal of a large part of the taxable property to the north and west of the district which the school depends on to carry out its program.

The firm of Angus Steven & Company, Certified Public Accountants, annually audits all our accounts, including funds received from plays, athletic contests, cafeteria, and school book store. We have at present ample financial support. If Lake Forest remains in the district, we do not anticipate any increase in our tax rate. If the assessed valuation of Deerfield township is raised in order to meet the requirements of elementary schools, the tax-rate of the high school district will be lowered. The amount raised for high school purposes will remain the same. Our building program has been planned and will be provided for without increasing the burden of taxation.

"Our teachers are well paid. Our classes average less than 23 pupils, little more than half the size of classes in Chicago. Yet our school is so economically administered that our costs per student are not much greater than Chicago costs.

Tax Rate

"The tax rate last year, 1929-30, was \$1.09 on the hundred dollars of assessed valuation. The law permits us to raise \$1.37 1/2 for high school purposes. By special vote of the people of this district, this rate can be raised as high as \$2.00 on the hundred. If we should lose the suit in the Supreme Court when the case is tried in December and all the assessable property now included in Lake Forest, should be lost, we shall have to raise the tax rate to \$1.37 1/2 this year, meeting the balance by tuition from Lake Forest students. The fol-

lowing year, after these students withdraw, if withdraw they should we must appeal to you, the League of Women Voters, to help us raise the tax rate so that the great work we are doing may not cease, so that we may still keep the good teachers whom we have succeeded in gathering together, and still maintain our position among the leaders in American secondary schools.

"The League of Women Voters can do much by visiting the school and becoming acquainted with what it is striving to do. The teachers want you to visit their classes. It is found that those classes do the best work which are most frequently visited. You will wish to tell others what you see. You will see evidence of plan-

ning in every recitation, so as to break up the long recitation and give variety of method to the program so that a maximum of attention and interest will be secured. You will enjoy seeing these modern methods.

Urges Support

"We would ask you to visit the public school, to preserve your loyalty to this great democratic institution, to help us finance it adequately, and finally to encourage the elementary schools to cooperate and work out a common printed program of work representing the best modern practice in elementary education that there may be no educational loss in moving from one part of the dis-



Get acquainted with your store manager this week-end. This week is Store Manager's Week in all our stores and extra values are being offered to celebrate this "Get Acquainted Sale."



Queen Olives	Come Again Brand	full quart jar	27c
Virginia Sweet	Pancake Flour	regular pkg.	9c
Old Manse	Cane and Maple Syrup	1-lb. tin	18c
Corn	American Home Country Gentlemen	2 No. 2 cans	23c
Cherries	National Red Pitted	No. 2 can	23c
Swansdown	Cake Flour	2 1/2-lb. pkg.	25c
Brookfield Cheese	Swift's Brick or American	1/2-lb. pkg.	19c

Household Needs

American Family Soap	10 bars	57c
Selox	The Speed Soap 2 pks.	25c
Camay Toilet Soap	For Beauty 6 cakes	35c
Vitamont Dog Food	Priced Low 2 1-lb. cans	25c

Fruits & Vegetables

Potatoes	Genuine Idaho Russets At a New Low Price	15-lb. pack	33c
Florida Oranges	large 210's	23c	med. 200's 17c
Cranberries	At a Low Early Season Price For Pies and Sauces	2 lbs.	29c
Grapefruit	Juicy Florida 3 large 54's	23c	3 medium 80's 15c
Sweet Potatoes	Genuine Jersey For Baking or Frying	3 lbs.	17c

Highwood, 305 Waukegan Avenue

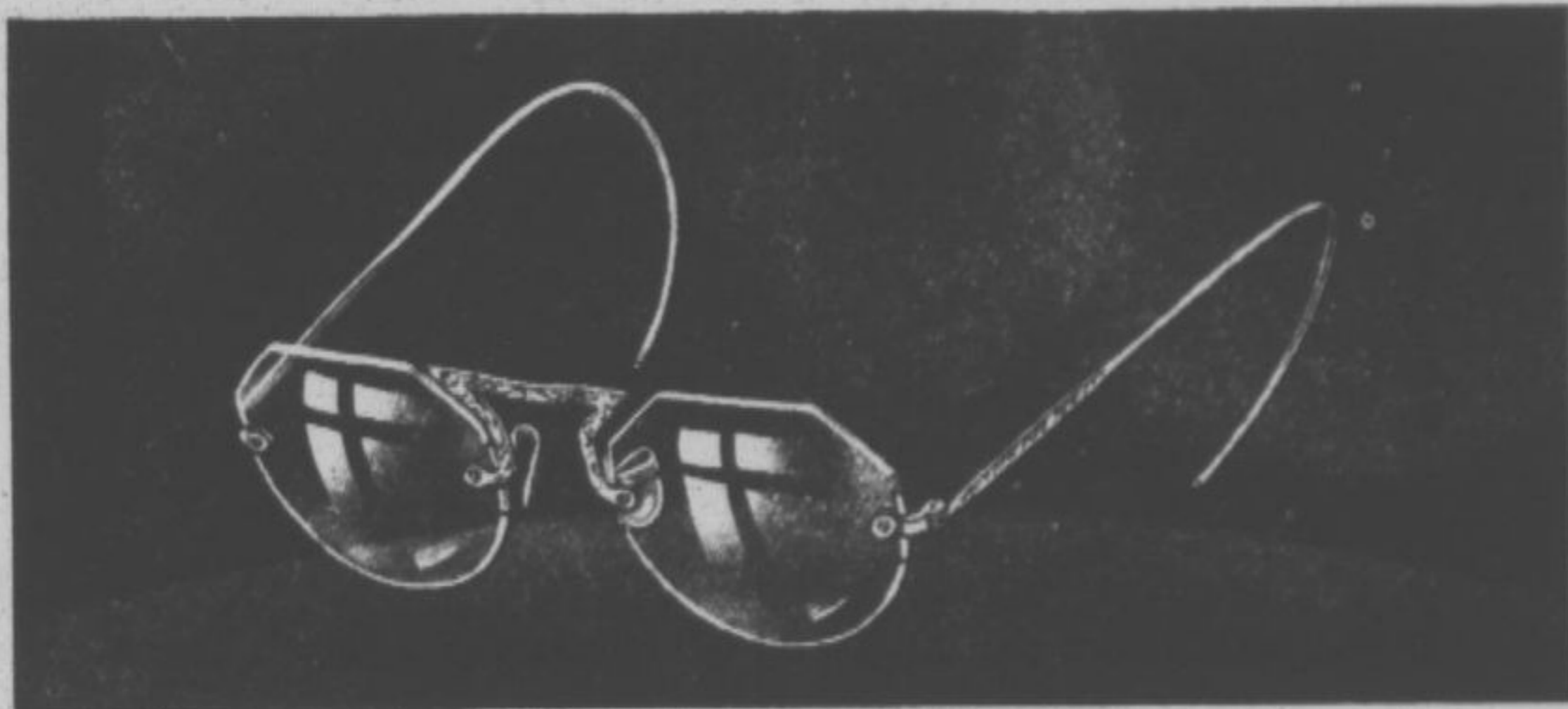
Deerfield, Waukegan Road

Highland Park, 503 Central Avenue and

Highland Park, 7 South St. Johns Avenue



Listen • AMERICAN HOME SERENADE • Friday Evenings, 7:30 to 8:00, W-G-N
THE SMITH FAMILY • Monday Evenings, 9:00 to 9:30, W-E-N-R



BEAUTY AND STYLE

In This New Mounting

Its fashion is in tune with these modern times—as much so as a becoming Gown or Hat.

An exquisite bit of rich engraving in 14K white gold; handmade and dainty, yet sturdy in construction.

THE CLIMAX

In Rimless Mounting

There are numerous new features that you should see. Ask to see this new, distinctive and refined rimless mounting.

HUSTON R. BOOTH

"Glasses of Character and Distinction"

SCIENTIFIC OPTICIANS

202-203 Lyon & Healy Bldg.
615 DAVIS STREET
EVANSTON

Open Tuesday, Thursday and
Saturday evenings, for
your convenience