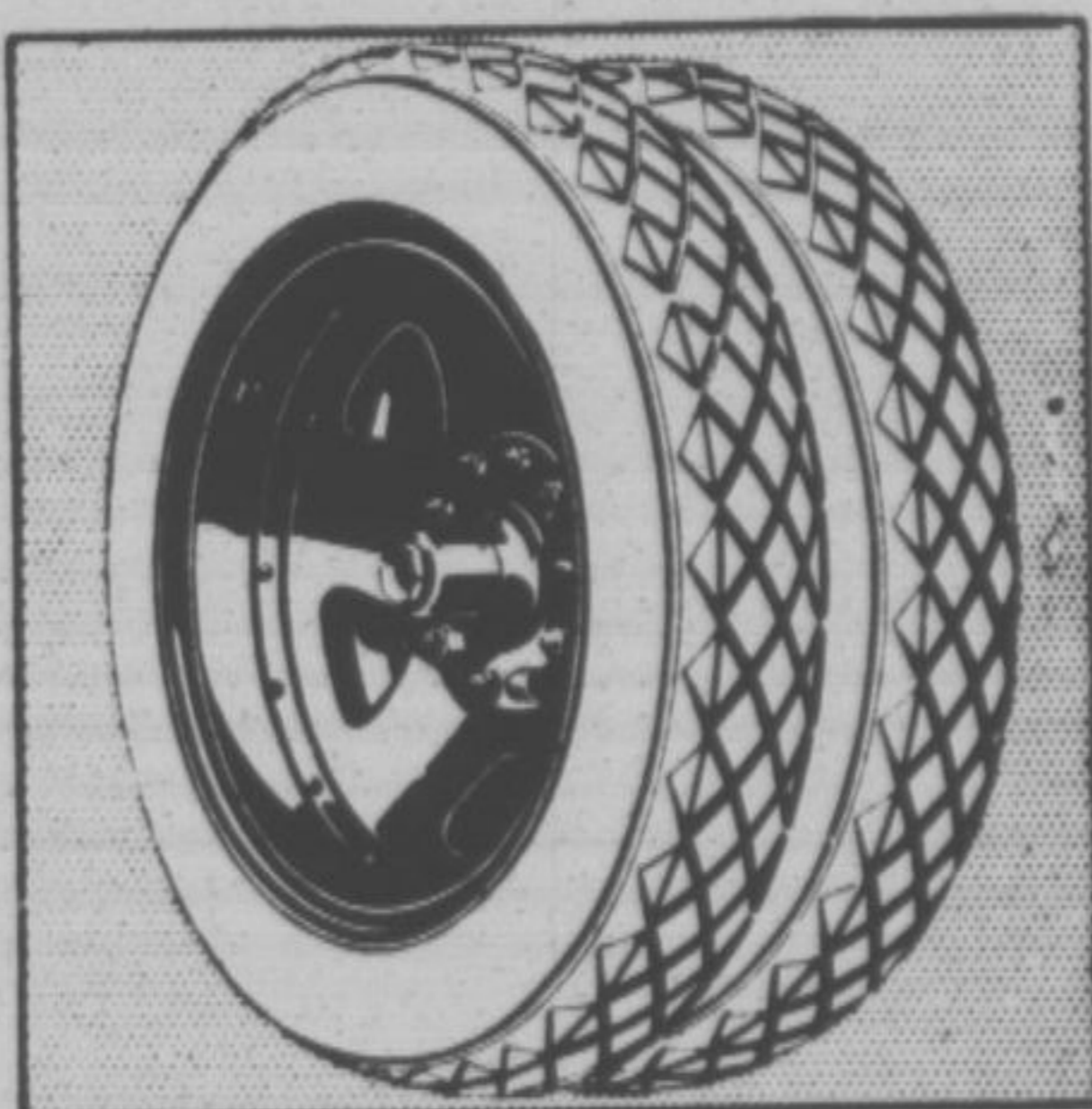


For Economical Transportation

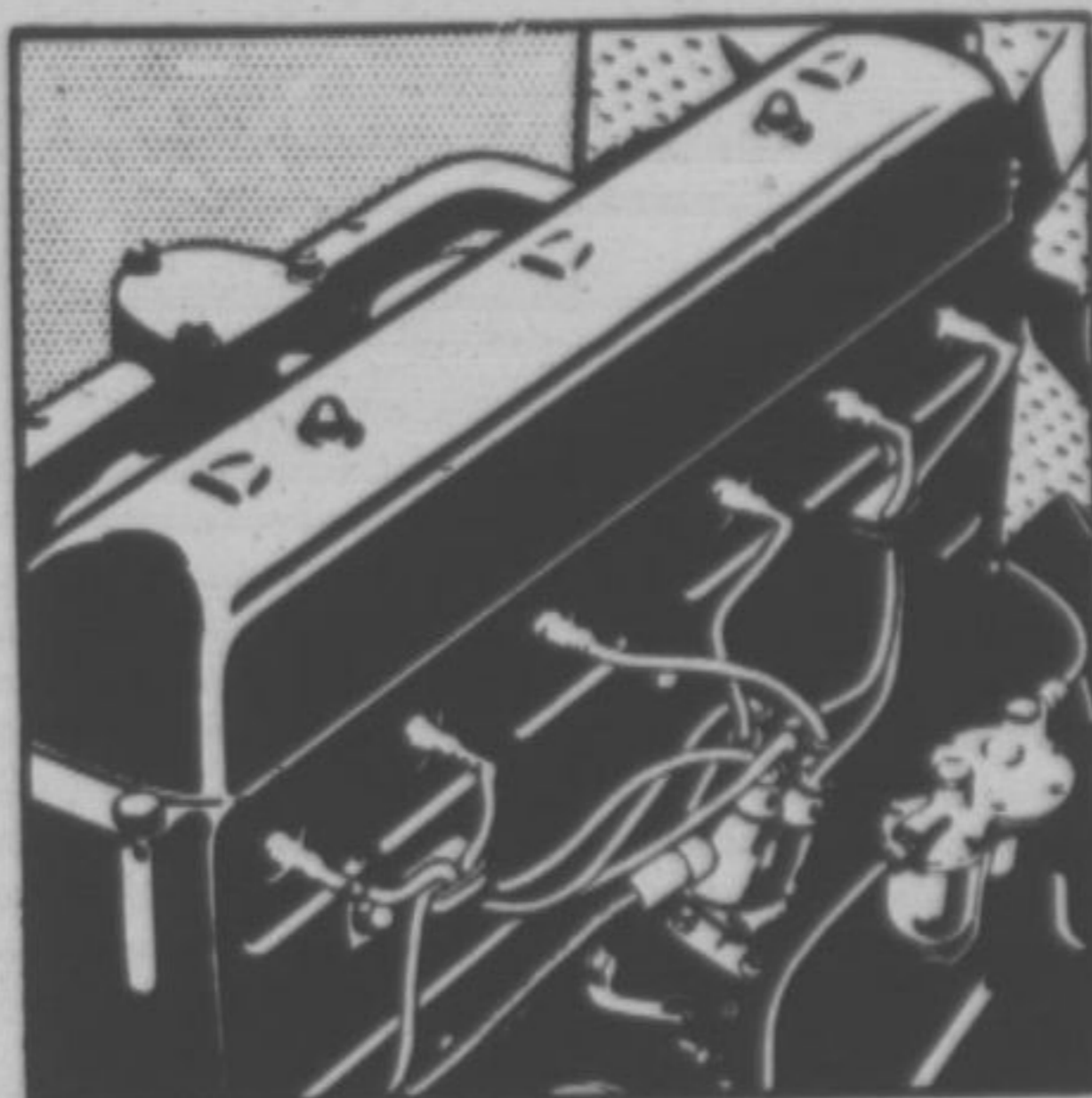


Outstanding features of the new Chevrolet 6-cylinder truck

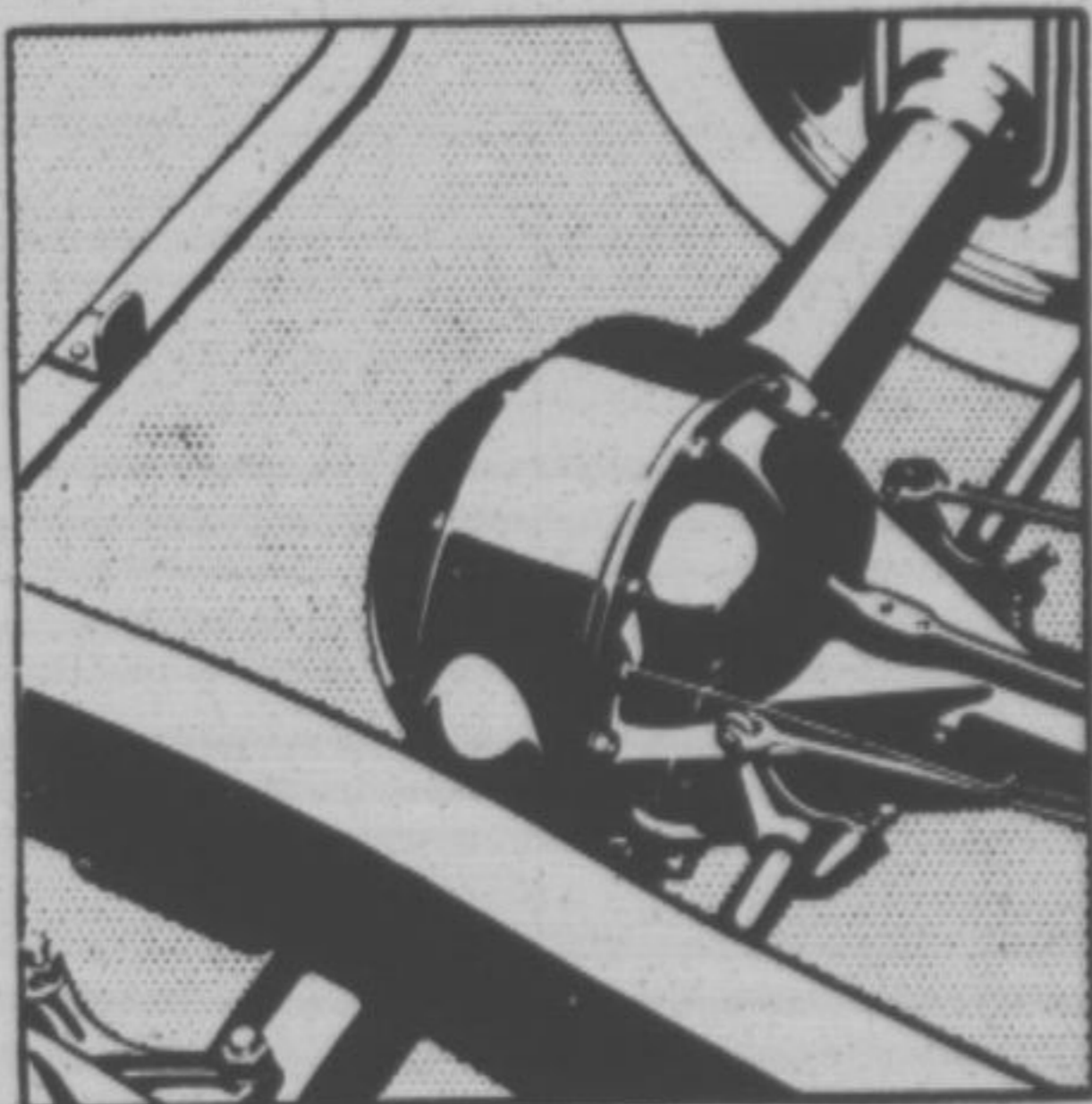
NEW
DUAL
WHEELS



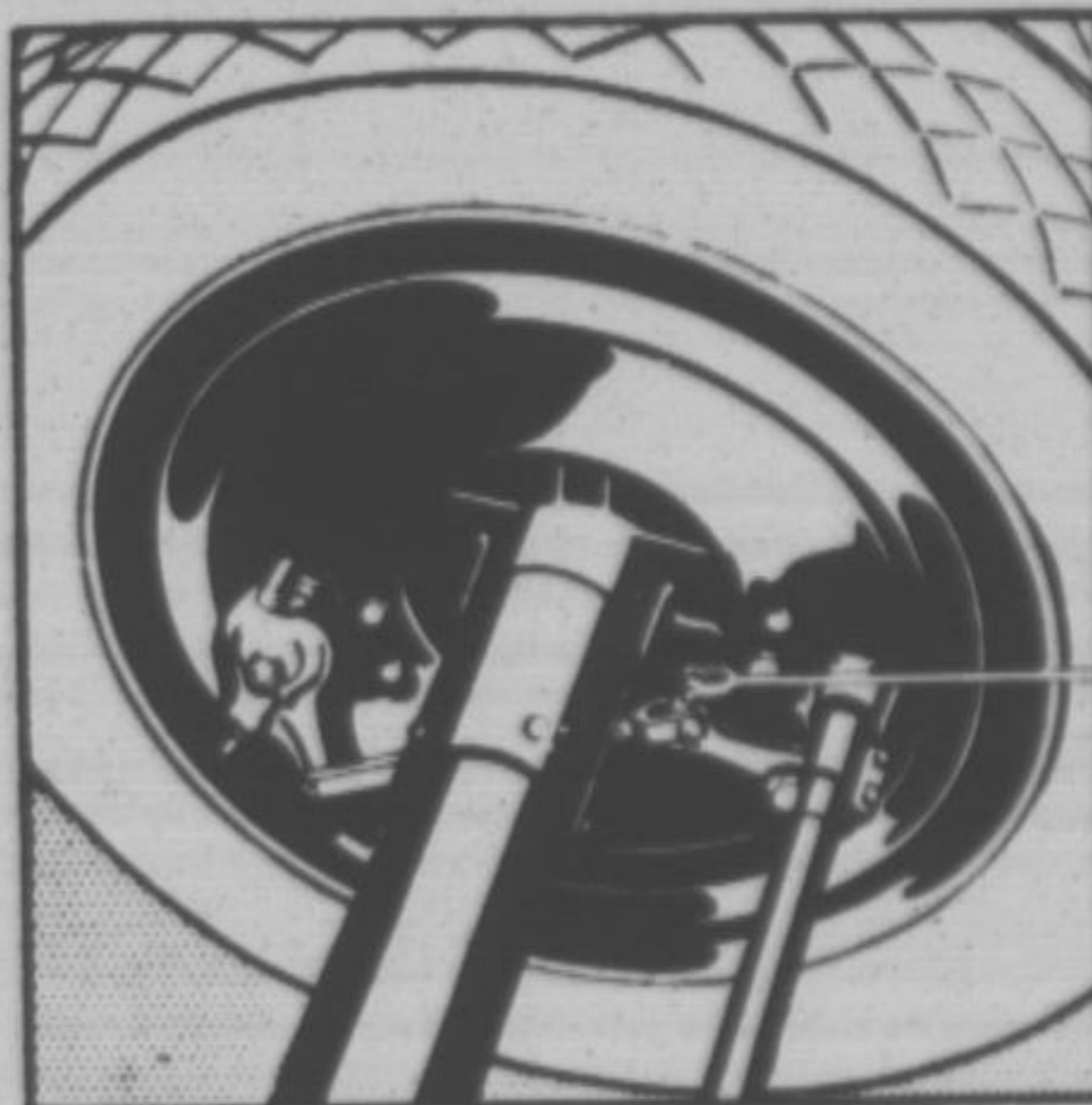
6-CYLINDER
50-HORSEPOWER
MOTOR



NEW
RUGGED
REAR AXLE



NEW FULLY
ENCLOSED
BRAKES



To every man who buys trucks, there are certain features in the new 1½-ton Chevrolet that recommend it especially for modern hauling.

The rear axle is larger, heavier and more durable. The rear brakes are larger, and all four brakes are completely enclosed. Chevrolet's 50-horsepower valve-in-head six-cylinder engine combines modern performance with unexcelled economy.

Dual wheels, along with six truck-type cord tires, are optional equipment at slight extra cost. In addition, the new heavy-duty truck clutch, the 4-speed transmission and the heavier, stronger frame are factors of outstanding importance to the modern truck user.

Come in today and arrange for a demonstration of the new Chevrolet truck!

1½-Ton Chassis with Cab..... \$625
Light Delivery Chassis. \$365
Light Delivery with Cab \$470
(Pick-up box extra)

UTILITY 1½-TON CHASSIS

\$520

DUAL WHEELS \$25 EXTRA

Roadster Delivery..... \$440
(Pick-up box extra)

Sedan Delivery..... \$595

All prices f. o. b. Flint Michigan

CHEVROLET TRUCKS

WM. RUEHL & CO.

120 North First Street

Phone 1110