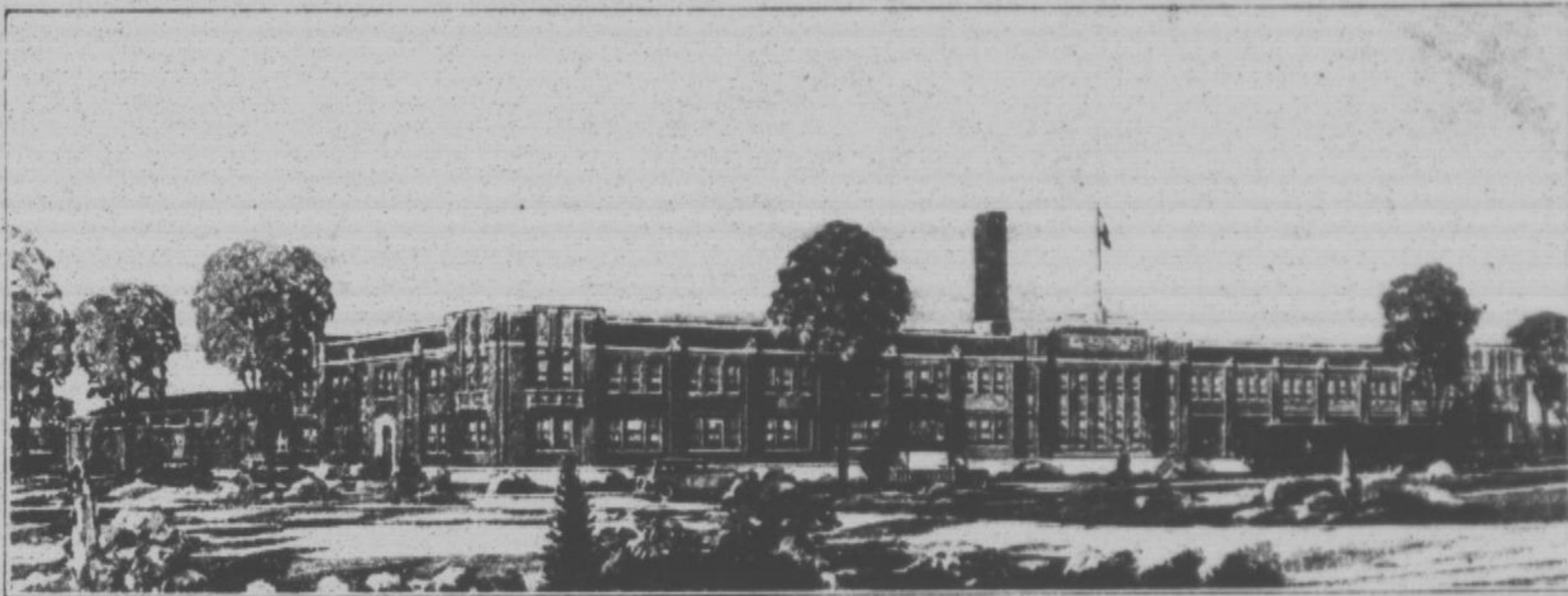


New Public Service Company Building



A new service headquarters, costing approximately \$750,000, has recently been placed under construction by the Public Service Company of Northern Illinois, on a 63-acre tract owned by that company in the Skokie valley between Northbrook and Glencoe, about a quarter of a mile south of Dundee road on the new Skokie boulevard. This project will provide a centralized operating headquarters for the various departments of the company serving the north shore suburban territory. A two-story building, to be completed next spring, covering about three acres of floor area, will house about 200 employees.

The entire service headquarters, including the garages, shops, switch

tracks and storage yards which are to be a part of the development will provide employment for upwards of 400 people, according to officials of the company. Garage facilities for 150 cars and a large employees' lunchroom are also a part of the plans. The expectations of the Public Service company for future development at this location are indicated by the acquisition of the large tract of land which is sufficient to provide headquarters eventually for as many as two thousand workers.

The building now under course of construction was designed by H. V. von Holst of Chicago. It will be a grey brick structure with limestone trim. An attractive system of exterior decorative lighting, embodied as

an integral part of the architectural scheme, will lend a beautiful effect to the completed building at night. A machine switching arrangement for handling telephone calls from customers calling the company from any of the north shore towns served will be an added feature of the facilities for improved service to customers which the new headquarters will provide.

The completion of this project will make the fourth centralized operating headquarters of a similar nature established by the Public Service company in the large territory outside Chicago in which the company supplies electricity and gas. Others are located at Waukegan, Maywood and Harvey.

likewise gives instructions as to what steps the city must take toward securing the plant.

The plant will be erected at a cost of \$75,000. The equipping and maintenance of the plant for the first year will result in expenditures of about \$200,000 more. Aside from the value of the plant as a place of employment it will also prove an attraction to visitors.

The fact that Waukegan was being considered for the plant was first received by the Waukegan Daily Times from its Washington bureau. The matter was referred to the Chamber of Commerce and officials immediately started work on the project.

Black Soil, Trees, Shrubs for Sale
Phone Res. H. P. 1891
Reasonable Prices
Patrick F. Cawley
Landscape Gardener, Contractor, Excavating and Cement Work, Sewer and Water Service. Estimates Furnished
233 North Second Street
Highland Park, Illinois

Auto Storage

Dead Storage for the Winter
as low as \$7.50 per month.
Other storage \$12.00

Nevitt Motor Sales

382 East Park Ave. H. P. 56

BUILDING SHOWS NOTABLE INCREASE

Construction in Chicago Area for Sept. Touches High Point of Year

Building construction in the Chicago metropolitan area reached the highest volume of the year in the month of September, according to the building survey department of S. W. Straus & Co. With a total of \$16,276,358, it topped the May total of \$15,210,491, the previous high, and made a 50 per cent gain over the August total of \$10,487,000. The city with a September column of \$13,381,500, its high for the year, which was a 75 per cent increase over August, was responsible for the good showing of the area, because the suburbs as a whole fell behind.

Show Increase

Twenty-four suburbs of the forty-six reporting showed increases in September over August. Worchester and Mount Prospect, both of which reported no building last month, registered totals of \$33,500 and \$20,000 respectively. La Grange scored the huge increase of 3,300 per cent in the August-September comparison. The following towns made substantial gains:

Winnetka, 541.87 per cent; Geneva, 475.43; N. Chicago, 414.76; Blue Island, 396.50; Harvey, 226.81; Forest Park, 147.74; Park Ridge, 136.59; Oak Park, 132.30.

Listed according to rank are the towns which registered increases under 100 per cent: Hinsdale, Wheaton, Hammond, Highland Park, Wilmette,

Berwin, West Chicago, Glencoe, Maywood, Lake Forest, Elmhurst, Batavia, and Evanston.

In the comparison of September, 1930, with September, 1929, when the total was \$16,898,948, the metropolitan area registered a loss of 3.6 per cent. The city of Chicago, however, increased 18.2 per cent over the September, 1929, volume of \$11,316,200. Of the suburbs making gains, Geneva topped the list with 1267.66 per cent. Glen Ellyn followed with 431.11 per cent, Dolton 275 per cent; Hinsdale 171.53 per cent, and Westchester 109.38 per cent. Increases of under 100 per cent were made by Lombard, West Chicago, Highland Park, Kenilworth, Blue Island, Maywood and Joliet.

Comparative Figures

	Sept. '30	Sept. '29	Aug. '30
Aurora	\$ 87,057	\$ 96,415	\$ 329,195
Batavia	12,350	12,950	9,775
Berwyn	91,400	157,075	55,850
Blue Island	120,755	106,016	24,321
Calumet City	9,230	71,000	17,500
Chi. Hts.	16,580	79,725	19,235
Cicero	28,700	534,781	72,888
Des Plaines	12,525	60,335	44,350
Dolton	3,000	800	7,535
Downers Gv.	12,900	35,240	16,795
Elgin	68,955	90,735	72,096
Elmwood Pk.	12,423	53,260	43,639
Elmhurst	44,450	83,130	34,850
Evanston	247,050	325,150	208,500
Forest Park	15,369	40,485	6,200
Geneva	8,200	600	1,425
Glen Ellyn	46,051	8,664	58,644
Harvey	40,590	130,799	12,420
High. Pk.	359,950	261,775	218,718
Hinsdale	96,529	35,550	49,500
Homewood	1,500	4,000	26,900
Joliet	275,705	257,275	490,100
Kenilworth	58,400	45,470	74,700
La Grange	34,000	161,600	1,000
Lake Forest	108,786	264,539	79,361
Libertyville	3,905	27,000	27,470
Lombard	32,240	20,043	46,151
Maywood	49,382	43,610	35,640
Mt. Pros.	20,000	26,370	000
Niles Center	62,550	63,600	229,000
N. Chicago	16,215	27,300	3,150
Oak Park	78,285	223,290	35,700
Pk. Ridge	92,664	114,679	39,166
Rv. For.	5,437	89,650	45,600
St. Charles	17,425	18,750	44,450
Villa Pk.	7,815	10,185	14,150
Waukegan	75,780	264,100	95,500

Westchester	33,500	16,000	000
W. Chicago	10,175	7,400	6,885
Wheaton	23,900	43,000	13,000
Wilmette	104,911	115,385	62,585
Winnetka	90,760	129,400	14,140
East Chicago	36,983	10,050	28,121
Gray	70,265	1,024,635	118,435
Hammond	177,356	226,200	93,460
46 towns	\$2,894,858	5,580,748	3,212,300
Chicago	13,381,500	11,316,200	7,634,700
	16,276,358	16,896,948	10,847,000

Co. Supt. Simpson Is Convention Chairman

County Superintendent of Schools T. A. Simpson is presiding over the rural health group at the annual convention in Rockford for the Mississippi Valley Conference on Tuberculosis and Sanitariums.

The meeting started Tuesday and delegates from all states between the Allegheny and Rocky Mountains are present. Noted speakers on health and sanitation are to be present from all over the country.

At the same time that this convention is in session the state association of nurses is in conference there.

Mr. Simpson was chosen to preside through his activity in school work and in the Lake County Tuberculosis association, it is understood.

Co-operation of Congressman Carl R. Chindblom in the securing of the large fish cultural plant for Waukegan, was pledged by that official in a letter received by the Waukegan and North Chicago Chamber of Commerce last week.

Congressman Chindblom also encloses a message which he had received from the bureau of fisheries and which states that Waukegan is being considered for the plant and

DRESSMAKING

GOWNS
WRAPS
SUITS
COATS

made to suit your individuality. Only the finest of workmanship. Strict attention given to the smallest details.

We also remodel and alter.

COLLETTE SOEURS

470 Chestnut Street
Phone Winnetka 1011

RADIO SHOW

MONDAY TO SUNDAY INCL.

COLISEUM

OCT. 20-26 INCL.
DAILY-2-11 P.M.

"SEE TALKIES MADE"