

## GARDEN

and



## LANDSCAPE

by F. D. Clavey

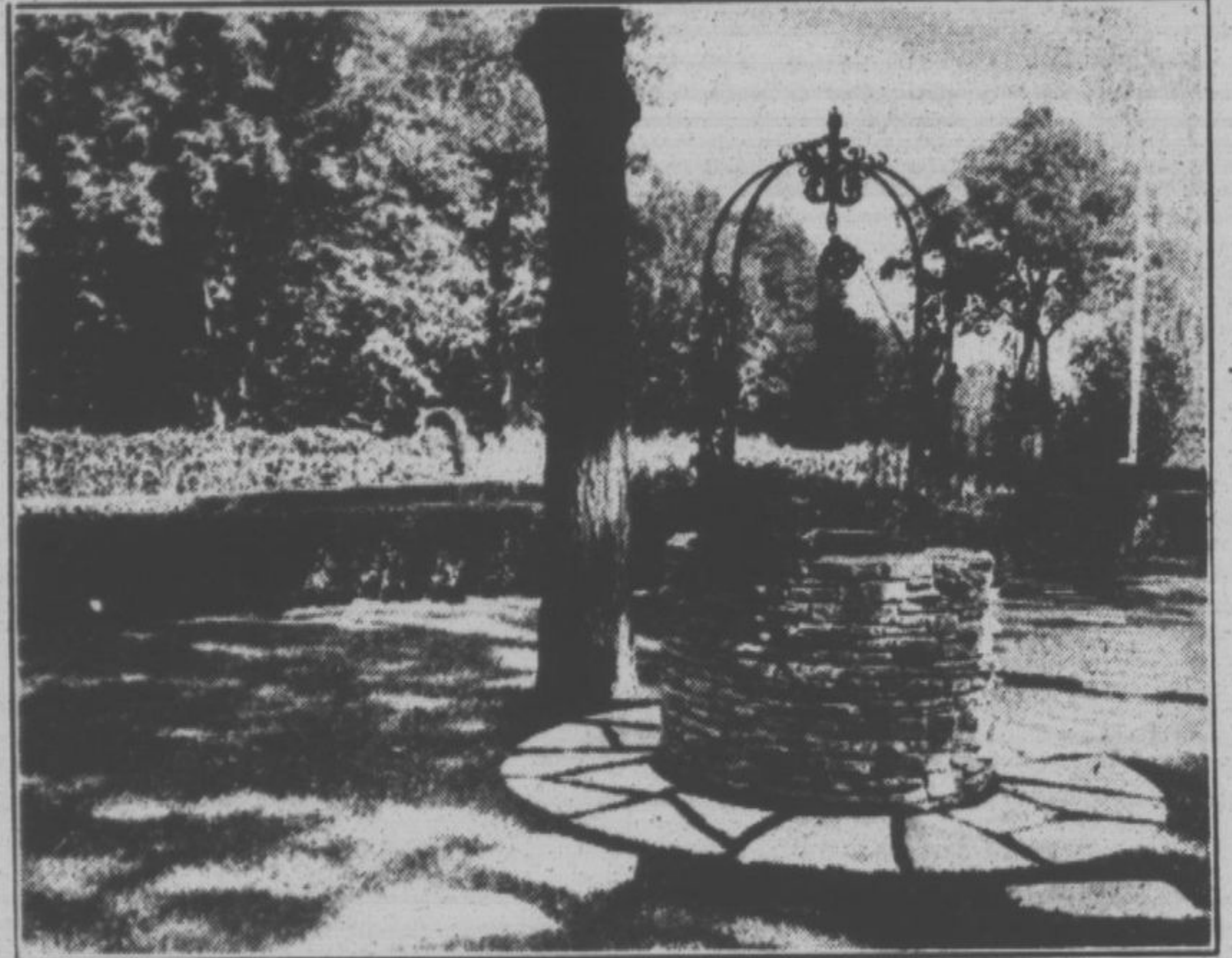
Ravinia Nurseries, Inc.

In all the vast store of plants for ornamental planting, none can equal the satisfying richness of evergreens. They are the aristocrats of the plant world. Each variety has an exclusive individuality in color, form and texture. The play of light and shadow in evergreen foliage is a delight to the soul. In landscape planting evergreens are invaluable for use as wind-breaks, hedges, screens against unattractive views and for feature plantings either as specimens or in groups.

The value of evergreens in ornamental planting is most strikingly demonstrated in winter, when deciduous trees and shrubs have lost their leaves. Then evergreens stand out

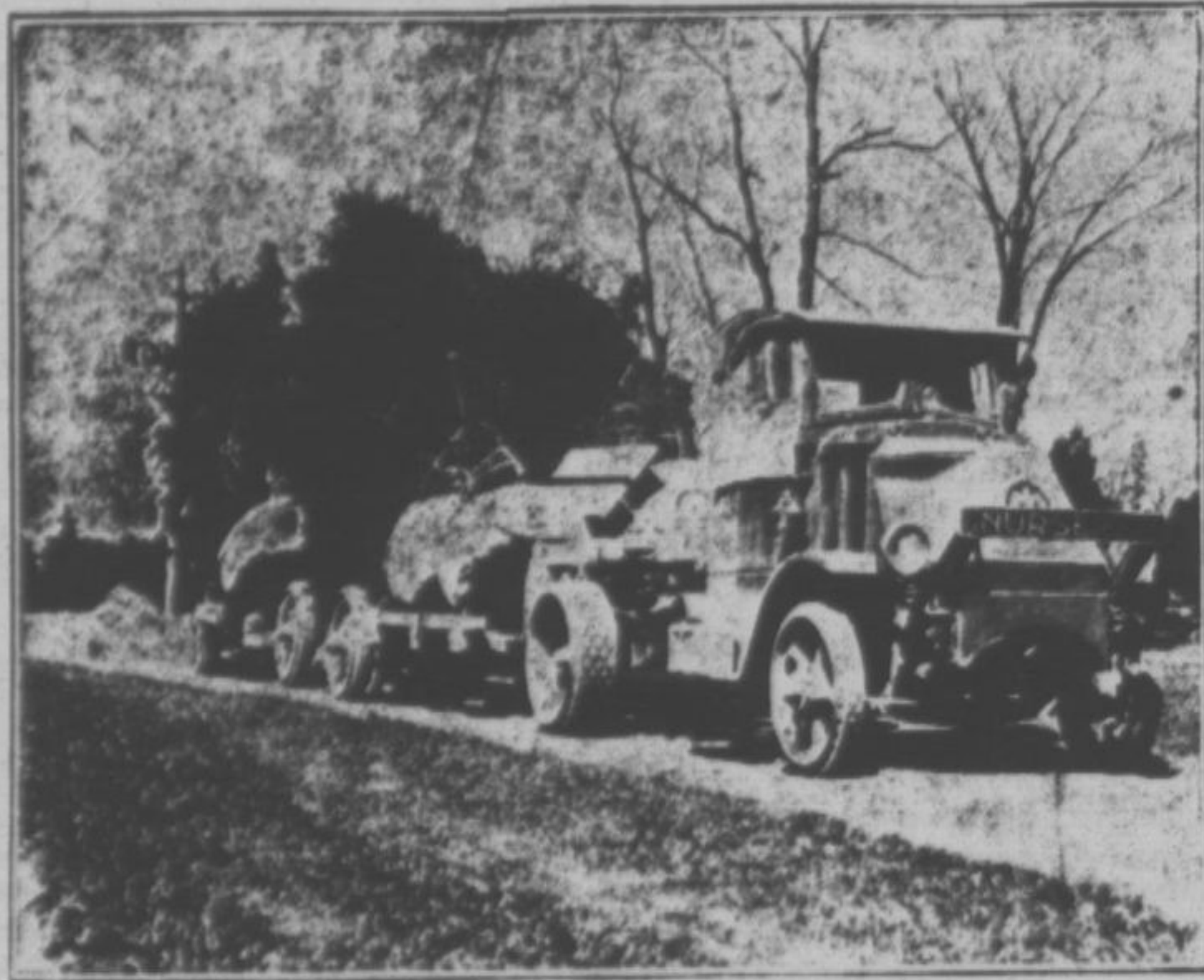
softening the wild lines of architecture. They continue to serve as screens against unpleasant views when deciduous plants take a vacation. Their beauty when festooned with snow moves one to poetry.

Evergreens when properly grown in the nurseries are frequently transplanted and root-pruned to obtain fine fibrous root systems as the tops of an evergreen are seldom trimmed or cut back when used in landscape planting, and unless they have a good root system the result is far from satisfactory—while on the other hand, evergreens properly grown, dug, balled and burlapped, and handled by experienced workmen, and then properly arranged, are an asset to any landscape.



A view of the garden at the home of Mrs. Albert P. Snite at 201 Central Avenue, Highland Park, showing well-head planned and executed by Charles Fiore.

## PLANT NOW



Moving Evergreens with our modern equipment

## EVERGREENS

We are disposing of 75 acres of nursery stock to close an Estate, and are offering a large assortment of Evergreens, Trees, and Shrubs at very attractive prices. Why not take advantage of this exceptional opportunity now?

Our Representatives are thoroughly trained and will help you solve your landscape problems.

**F. D. CLAVEY**  
Ravinia Nurseries, Inc.

The Lake Shore's Largest Nurseries

Office and  
Nurseries



Deerfield,  
Illinois

Complete Landscape Service  
Telephones: Deerfield 36 or Highland Park 36

During the past few years thousands of evergreens have been shipped to this part of the country from the South and have been sold through various methods to the public, and their experience has been a sad one. Although they may be of the same variety, southern grown evergreens are not hardy in this vicinity.

Only those varieties of evergreens that have withstood the rigorous tests imposed by climatic variations in the Grant Lakes district should be used in your landscape plantings. It may be true that the first cost will be slightly higher, but it will be well to remember that one live evergreen is worth considerable more than a carload of dead ones.

In this vicinity will be found some of the largest nurseries in the country, and nowhere else can be found

more perfect specimens of evergreens that are perfectly hardy.

Buy your evergreens from reputable nurseries and they will not hesitate to guarantee them to grow.

By Elmer L. Clavey.

## The Rock or Alpine Garden

How to place rocks, boulders, etc., and what rocks to select, by Henry Schaffler, landscape designer and contractor.

Rocks should be placed in a natural way; that is: Place them as nature does it, wherever rocks are found abundantly.

Flagstones with weathered edges, weathered or moss covered rocks, should be laid in a stratified manner, in order to show natural strata of layers. Never set these rocks and stones any other way than in horizontal layers. Place layers of stones



and assure successful  
growth next spring!

Plant Irises and Delphinium this Fall if you want them to bloom next Spring. At our Nurseries you will find many different varieties of Irises as well as thousands of other perennials and shrubs, which if planted now, will bloom in your Spring Garden.

If you plan any landscape improvements let us help you with your personal requirements. Telephone Highland Park 523 for an appointment.

## Charles Fiore Nurseries

Located on Route 22 one mile west of Milwaukee Avenue

Specialists in

LANDSCAPE GARDENING  
HIGHWOOD

Office 49 Prairie Avenue - Phone Highland Park 523  
Nursery Prairie View - Telephone Libertyville 628-R-1

