

AIRPORTS FACTOR IN REAL ESTATE GROWTH

Marked Aid to Development, in Opinion of W. E. Daniels of Realty Board

Walter E. Daniels
Chicago Real Estate Board

Airports have already become a factor in the utilization of land in the vicinity of Chicago. There are nineteen flying fields and two sea plane bases in the Chicago area, and the smallest private flying field has 33 acres in the landing field alone while an airport such as that of the Curtiss Flying Service Corporation near Glenview is established on 430 acres. There are 125 acres in the airport known as Sky Harbor. The total amount of acreage in airports is not available as this writing, but from diagrams giving dimensions of landing fields it is evident that the average would be well over 100 acres a field. The Harlem port has 119 acres, the Akers field has 113 and Elmhurst 640 acres.

In Its Infancy

Aviation is only in its infancy. The tendency will be to build more and larger fields. Attempts to double the size of the Municipal Airport wait only an agreement on a lease. The large modern planes require large fields.

Prof. Ernest McKinley Fisher of the University of Michigan in his standard text on the "Advanced Principles of Real Estate Practice" points out, "It is to be expected that when travel by air has become more common the location of airports and landing fields, and air routes will exert a tremendous influence on land values, although it is impossible to foresee with any precision what the effects will be, just as it was impossible 30 years ago to foresee the widespread effects on land values which the universal use of the private automobile would have."

Development Factor

It is not just the amount of land in the airports that will affect the real estate market but the development which will take place in the vicinity. Even now the improvements on the airports themselves run in to large figures. The Curtiss Flying Service Corporation field cost \$1,000,000.00. Bonds to the extent of \$600,000 have been voted for the improvement and extension of the Municipal Airport. Sky Harbor cost 350,000, and the improvements include a pretentious club house that has rooms for resting, dining, dancing, writing, and sleeping quarters for visiting aviators.

One of the oldest of extent trees is the maidenhair tree of Japan, which is a direct descendant of prehistoric species. It is illustrated in an exhibit in Field Museum of Natural History's department of botany.

The systems according to which minerals crystallize, and the varying development of crystal form in each system, are well illustrated in the William J. Chalmers crystal collection which is on exhibition at Field Museum of Natural History.

Man Who Kept World's Fair Open on Sundays Observes Anniversary

In a quiet home at Antioch, the man who kept the World's Columbia Exposition open on Sundays in '93 celebrated his 80th birthday. He is Charles W. Clingman, who for 60 years was in the wholesale dry-goods business in Chicago.

In '93 the world's fair directors had decided to have the exposition closed on Sabbath days, but Mr. Clingman, one of the stockholders of the fair, filed an injunction suit to keep the gates open and he won. He filled the suit, he has explained, because Sunday was the only day workingmen and their families could attend.

A year ago the veteran announced that if any ruling was adopted for Sunday closing of the Century of Progress Exposition in 1933, he would be "one of the first to fight."

Matt Atkinson Elected to Office by Commissioners

The twenty-fifth annual convention of the Illinois State Association of Highway Commissioners and town clerks was held in Bloomington, Ill., on Sept. 4 and 5. There are 102 counties in the state and Lake county was the only one that was paid for all the townships, thereby winning a prize of \$50 which the association offered for this record. The entire 16 townships in Lake county were 100 per cent. Mark Dilph of Mundelein won the prize for being the oldest town clerk in the state, having held office for 34 years.

The annual election of officers for the ensuing year resulted as follows:
President—Harry Fields, Chicago Heights, Illinois.
Vice president — Matt Atkinson, Lake Bluff, Illinois.
Secretary—Henry Hall, Momence, Illinois.

Retort Courteous

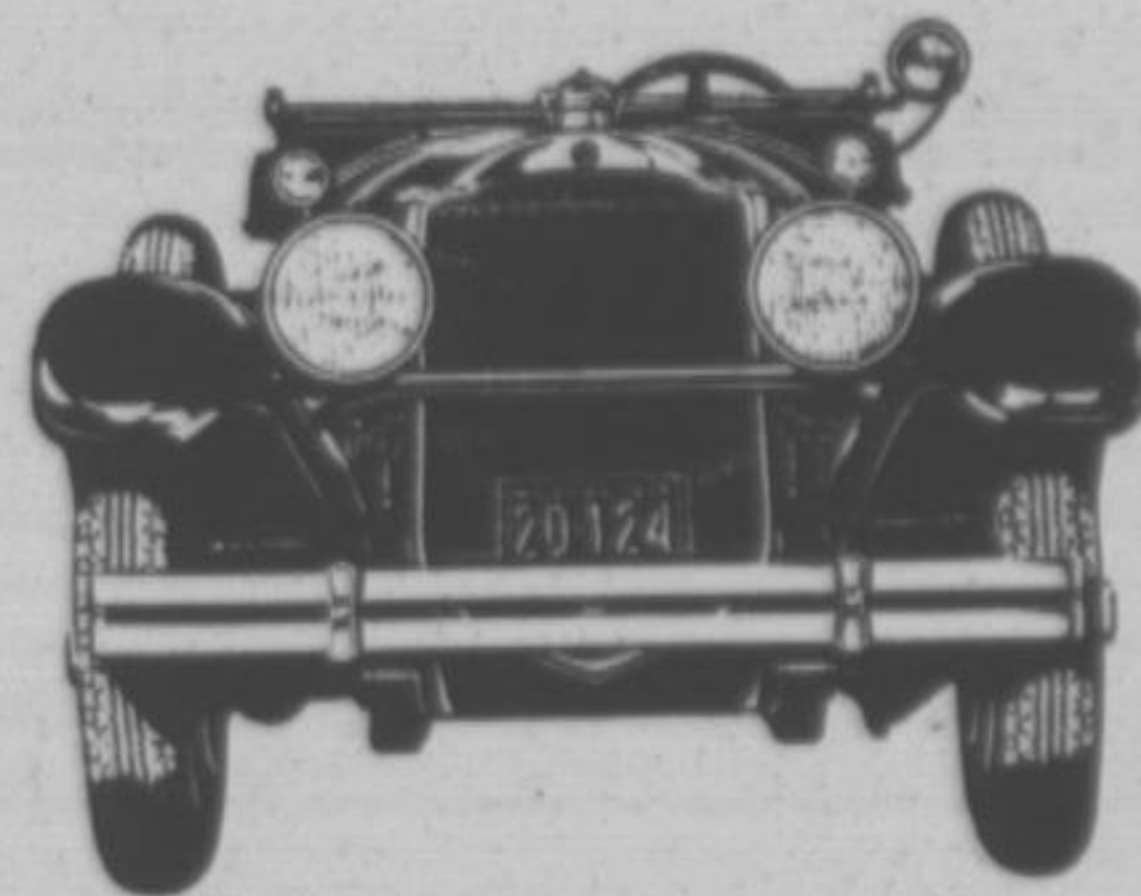
Replying to an abusive letter, a business man wrote: "Dear Sir—I am returning your letter herewith, feeling sure that you would rather have it in your waste basket than in our files."—The Country Home.

The Dusty Ocean

Sand fell on the deck of a ship 2,000 miles at sea recently. Sailors constantly have to mop and scrub, showing that the sea can be as dusty as the land.—The Country Home.

Packard

A Safe Place to Buy a Used Car



The Packard policy does not permit frequent and radical change in design to depreciate cars in the hands of owners. This makes a Packard a most satisfactory car to buy. While the average Packard owner expects to keep his car four years, we have Packard cars that have been used but a year or two, with most of their mileage life available at a great reduction from the original price. This week's bargains.

Packard 8, 3-43 7-Pass. Touring	\$ 650
Packard 6, 5-26 5-Pass. Sedan	1075
Packard 6, 5-26 Sedan, 6 wheels	1150
Packard 6, 5-33 Club Sedan	1250
Packard 8, 3-43 Judkins Sedan	1275
Packard 6, 5-33 Roadster, 6 wheels	1250
Packard 8, 6-40 Touring	1500

Call the Used Car Department and Arrange for a Demonstration

PACKARD MOTOR CAR COMPANY OF CHICAGO
925 LINDEN AVENUE, HUBBARD WOODS
Winnetka 3070 Greenleaf 6030

Milk is your best food ... drink more of it!

Wieland's Milk

Its outstanding quality is protected by every safeguard known to modern dairy science. Teach your children the "milk habit." Make them grow to be healthy men and women!

See that they drink at least one quart of milk each day

WIELAND DAIRY COMPANY, INC.

Visit Our New Pasteurizing Plant 3014 N. Tripp Avenue, Chicago