

IT'S WISE TO  CHOOSE A SIX

Announcing a new production record

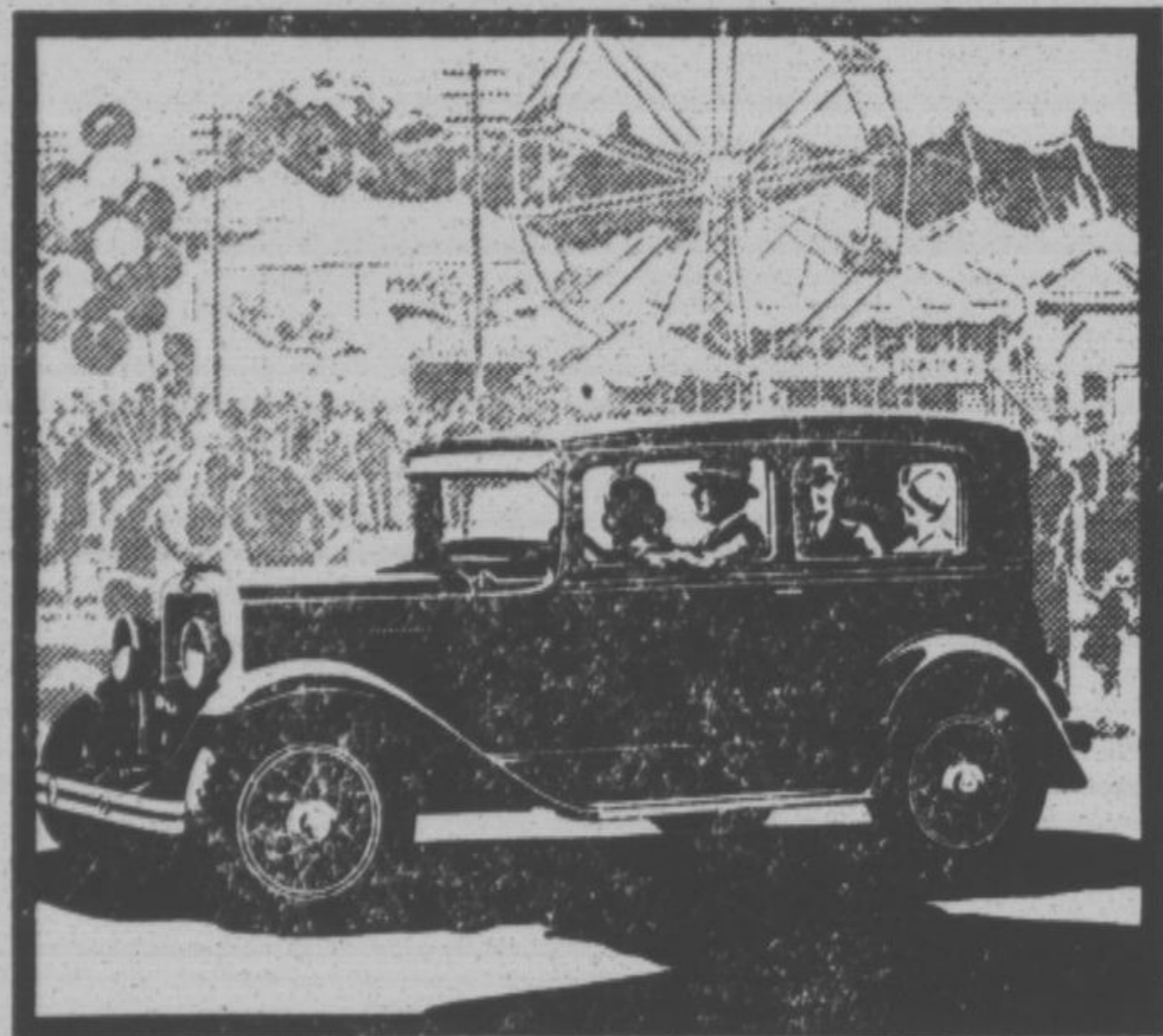
2,000,000 Chevrolet Sixes now on the road

Since January, 1929, Chevrolet has produced and sold over 2,000,000 six-cylinder automobiles—nearly five times as many as any other manufacturer has ever built in an equal length of time.

These 2,000,000 buyers have chosen Chevrolet because it offers many desirable qualities not obtainable in any other car so low in price—

—the smoothness, silence and flexibility of a modern six-cylinder engine—the comfort and roadability of a modern, full-length chassis—and the style, safety and distinction of bodies by Fisher.

Yet, despite these fine car advantages, the Chevrolet Six is unusually economical. Its gas, oil, tire and upkeep economy is unsurpassed. And



The Coach, \$565, J. o. b. Flint factory



Modern production methods assure high quality

any model can be bought for a small down payment and easy monthly terms! Come in today. Learn for yourself why two million buyers have agreed—"it's wise to choose a Six."

Some Distinguishing Features

50-horsepower six-cylinder motor . . . 48-pound crankshaft . . . full-length frame . . . four semi-elliptic springs . . . fully-enclosed four-wheel brakes . . . four Lovejoy hydraulic shock absorbers . . . dash gasoline gauge . . . Fisher hardwood-and-steel body . . . adjustable driver's seat . . . safety gasoline tank in the rear . . . non-glare VV windshield . . . and, for your protection, a new and liberal service policy.

Sport Roadster \$515	Club Sedan \$625	ROADSTER or PHAETON	Sedan Delivery .. \$595	1½ Ton Chassis . \$520
Coach \$565	Sedan \$675	\$495	Light Delivery Chassis..... \$365	With Cab..... \$625
Coupe \$565	Special Sedan \$685		Roadster Delivery \$440	Prices J. o. b. factory
Sport Coupe \$615	on Special Sedan)	(Pick-up box extra)	Flint, Mich. Special	equipment extra
	(6 wire wheels standard)			

CHEVROLET SIX

WM. RUEHL & CO.

120 North First Street

Phone 1110