

JUST THINK

You can buy an attractively designed, well made bed room group of 3 pieces in maple, mahogany or walnut for

\$91.50

Set consists of 4 poster bed, dresser and chest.

Your inspection of our new store is invited.

GEORGE W. FRALEY CO.

355 Central Avenue
PHONE H. P. 2627

(The new furniture store in the old McCrystle House, one door east of the Algon Theatre Building)

— OPEN EVENINGS (Except Wednesday) UNTIL NINE —

Lincoln Market

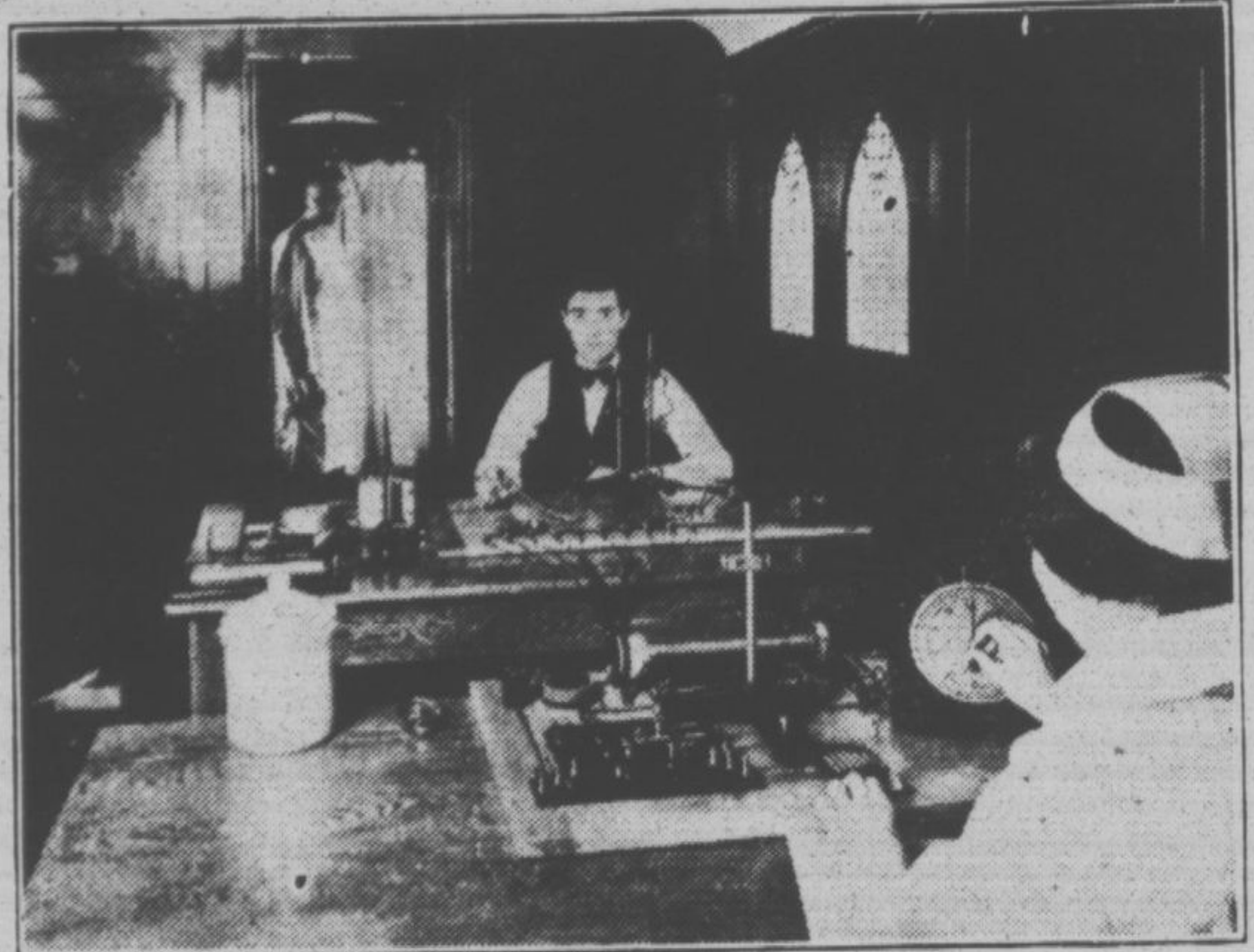
519 Central Avenue

Phone Highland Park 3140

SWIFT'S PREMIUM SLICED BACON POUND.....	39c
CHOICE NATIVE POT ROAST POUND.....	28c
FINEST NATIVE SIRLOIN STEAK POUND.....	45c
LEG OF SPRING LAMB POUND.....	35c
SWIFT'S PREMIUM RED HOTS POUND.....	28c
FANCY FRESH DRESSED BROILERS MILK FED — POUND.....	37c
SHORT LEG MILK FED VEAL POUND.....	30c
FRESH MEATY SPARE RIBS POUND.....	18c

Shop here and you will get 16 ounces to every pound, and the very highest quality of meats and poultry

"Mind Reading" Device Aids Public Safety



An unusual device, which literally reads a man's mind, is being used effectively by the Medical department of the North Shore Line in increasing the safety of operation on the "Road of Service." This apparatus is technically known as a nerve-reaction machine, and was especially designed under the direction of Dr. Hart Ellis Fisher, chief surgeon.

The apparatus was installed after an 18-year study which disclosed that unsafe practices are more due to man failures than mechanical failures, according to Dr. Fisher. "Safety education has largely eliminated mechanical defects which result in accidents," he pointed out, "so that the chief cause today is man failure."

Through tests conducted by this

machine, data is compiled which shows the nerve reaction, alertness of mind, accuracy of motion, precision of movement, extent of carefulness and degree of muscular fatigue. More than 3,200 employees of the North Shore Line and associated electrically-operated railroads have undergone these tests.

"This apparatus is not used in the selection or rejection of employes, but is simply a test for the purpose of determining the reasons for man failures," Dr. Fisher stated. "On the basis of these tests it is hoped to eliminate the various factors which have caused unsafe practices in the past." The picture shows the machine being used in the North Shore Line "hospital on wheels."

LEAGUE OF WOMEN VOTERS MEETING

(Continued from page 5)

for the situation in which they find themselves, need women on these juries.

"It is no more fair for women to be tried before juries of all men than it would be for men to be tried before juries of all women.

"Many women can arrange their time to serve on juries as easily, and some more easily, than men. Doubling the number available for jury service will lessen the number of times any one citizen will be required to serve.

"Women as a class have a keener consciousness of the human side of questions than have men, because women have naturally more experience in dealing with our human resources.

"Jury service would be an educational force of great value to women and through them to the community.

"Women are at present serving on juries in 21 states. Comments from those states have been most favorable. Judges and attorneys have stated that women are attentive, conscientious and fair-minded."

John D. Rockefeller Jr. employs 789 people on the Pocantico Hills estate. This gives you an idea of the help it takes to recover all of his father's lost golf balls.—N. Y. Sun.

New Combination in Sailplanes Announced

Announcement is made by Aero Agents Company, Inc., Wrigley Building, Chicago, distributors for the record holding Bowlus Gliders and Sailplanes of a new model combination ship which does away with the necessity of the primary glider, and will give the first and second primary training and sailplane combined; also on which a motor can be mounted at some later date when desired. Hawley Bowlus has been a firm believer in the value of, and sport in gliding for the past 20 years, but introduces the new model with the combination feature which allows training to be done with maximum safety and lowest cost without power, but making it possible to add this should it be desired when the pilot is well qualified, but without requiring a new investment in the plane itself. Mr. Brayton Witherell, president of this company, lives in Winnetka and is also vice-president of the Knox-Dunlap Hat Company. Mr. Kenneth Griffith, general manager, is a reserve officer, was a pilot during the war, including over-seas duty testing new and repaired airplanes and giving instructions.

Well political issues change along with the times. Back in 1900 the issue was the full dinner pail. Now a lot of ultra-modern politicians are trying to make it the full demi-john.