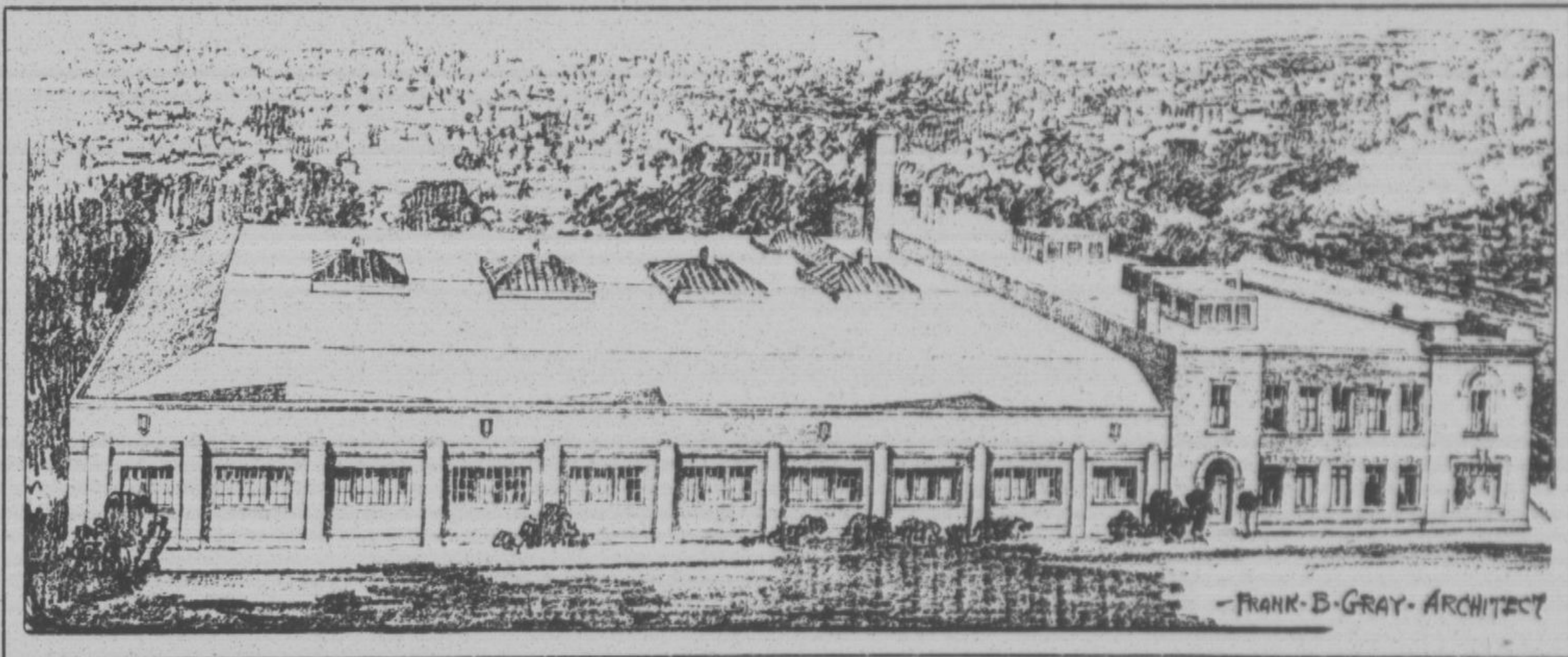
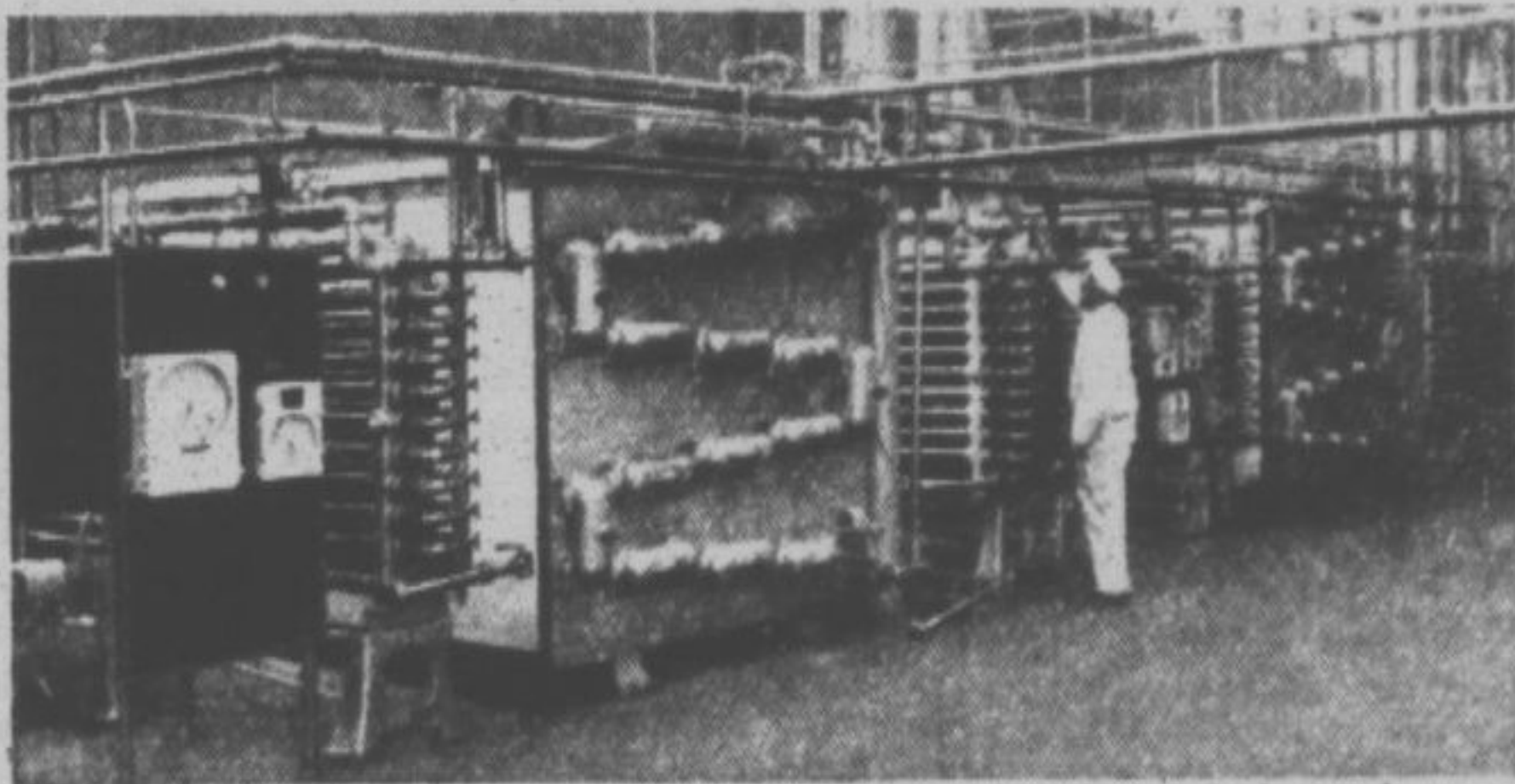


# Visit the newly enlarged Highland Park Home of the BOWMAN DAIRY COMPANY



Here, at the corner of Vine Avenue and Green Bay Road, in a setting of close-clipped lawns, thriving evergreens and flowering shrubs is one of the finest and most modern milk distributing stations for miles

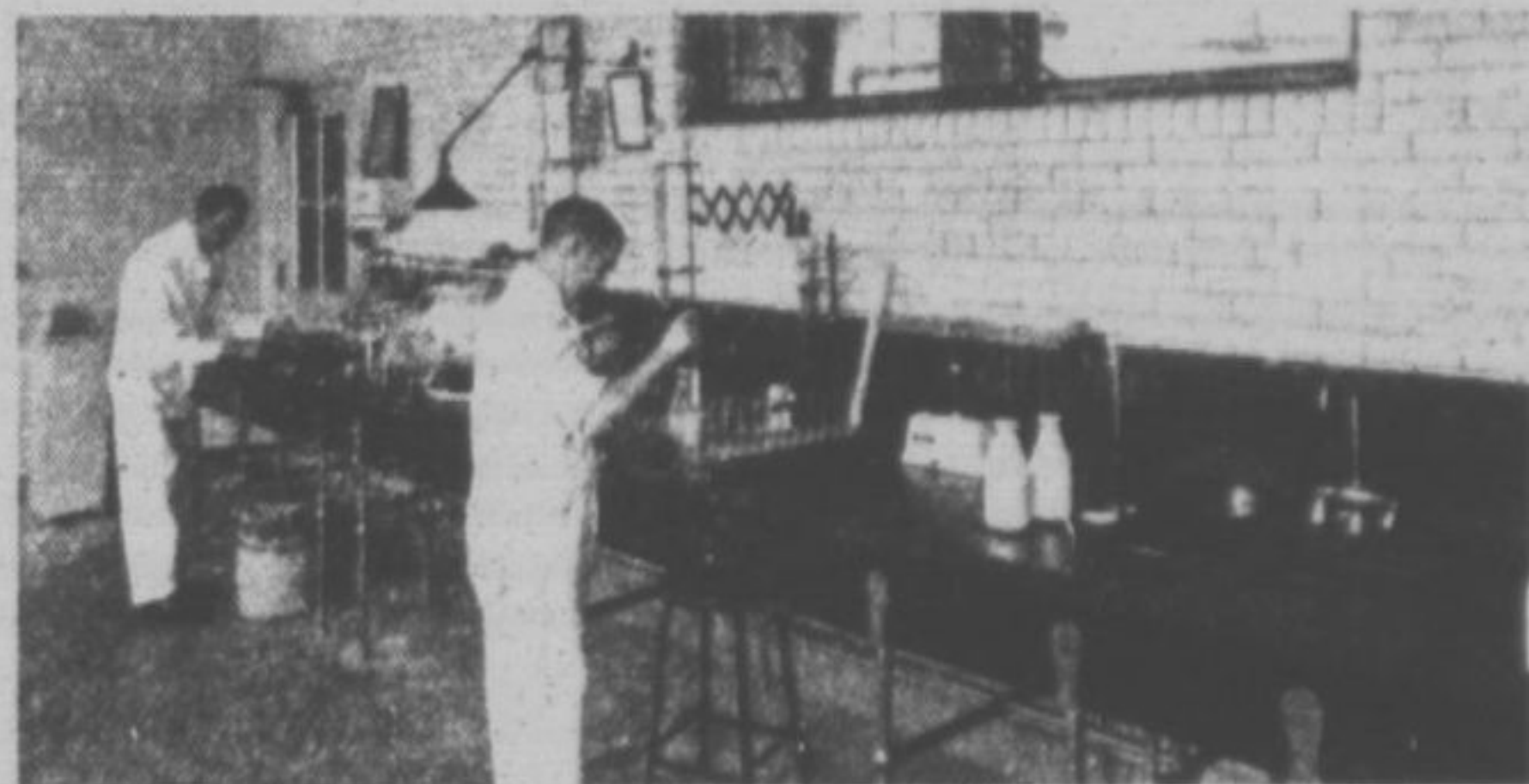
around. You are cordially invited to come and inspect us at any time. We are eager to have you see us demonstrate in the production of Bowman's Milk the fact that extra care at every step makes it extra good.



Above — Pasteurizing Units where Bowman's Milk is heated to 145° and held at that temperature for thirty minutes thus assuring absolute purity.



Above — Automatic Capping Machine where milk is bottled and sealed with out the touch of hands. Another inspection here to assure the purity of Bowman's Milk.



Above—Main Laboratory where milk from every Bowman Pasteurizing and Bottling Plant is scientifically tested for freshness, richness, purity and flavor.

Of equal interest to parents, teachers and children, would be a trip to the Bowman Dairy Company's Bottling and Pasteurizing Plant at 4127-55 North Kostner Ave., Chicago, Ill. Here you will see fresh, pure milk flowing from glass-lined containers in special-built refrigerated milk cars to the pasteurizing units. You will see the empty milk bottles given nine separate rinsings and brushings to make them absolutely sterile. Then you will see these milk bottles filled and sealed automatically, under the careful scrutiny of vigilant Bowman Inspectors, and passed on to the refrigerated loading room for final delivery to Highland Park and your home.

Bring your friends with you. It's a real education. Whether you are a patron of the Bowman Dairy Company or not—you are cordially welcome. This is an opportunity to become better acquainted with the men, machinery and methods that are responsible for maintaining the superior freshness, richness and purity of Bowman's Milk. It will give you a clearer understanding of the reasons why Bowman's Milk is the milk of superior flavor.

The Bowman plant is two blocks north of Irving Park Boulevard and four blocks west of Crawford Ave. Easily reached by surface car or automobile. Come any day you please, and at any time between 9 a. m. and 4 p. m.

**BOWMAN**  
DAIRY COMPANY  
**MILK**  
THE MILK OF  
SUPERIOR FLAVOR