

Arrest Man Charged with Robberies of Refreshment Stands

A daring series of refreshment stand robberies in the Fox lake region was put to an abrupt ending last week when an armed bandit believed guilty of the whole string was shot at and wounded by young Don Webb, attendant of the Liberty filling sta-

tion, Grayslake, and captured by the sheriff's staff 15 minutes later as he was trying to crawl into a culvert.

The captured bandit gave his name as Jim Posch but refused to divulge his address. George Heckinger, captain of the highway police, began an investigation. O. J. Stolzenberg, detective sergeant for the Milwaukee road, believes that Posch is involved in a number of recent box car robberies on that railroad.

Dump 60,000 Small Fish Into Lake at Waukegan

Sixty thousand trout and white fish fingerlings, all hatched and raised at the Spring Grove fish hatcheries, were dumped into Lake Michigan in front of the Koppelman fish company dock on Harbor place last week by workmen from the state conservation department to become fish dinners for Waukegan folk when they

grow up. More of the tiny fish are to be planted in the lake off Waukegan within the next two weeks.

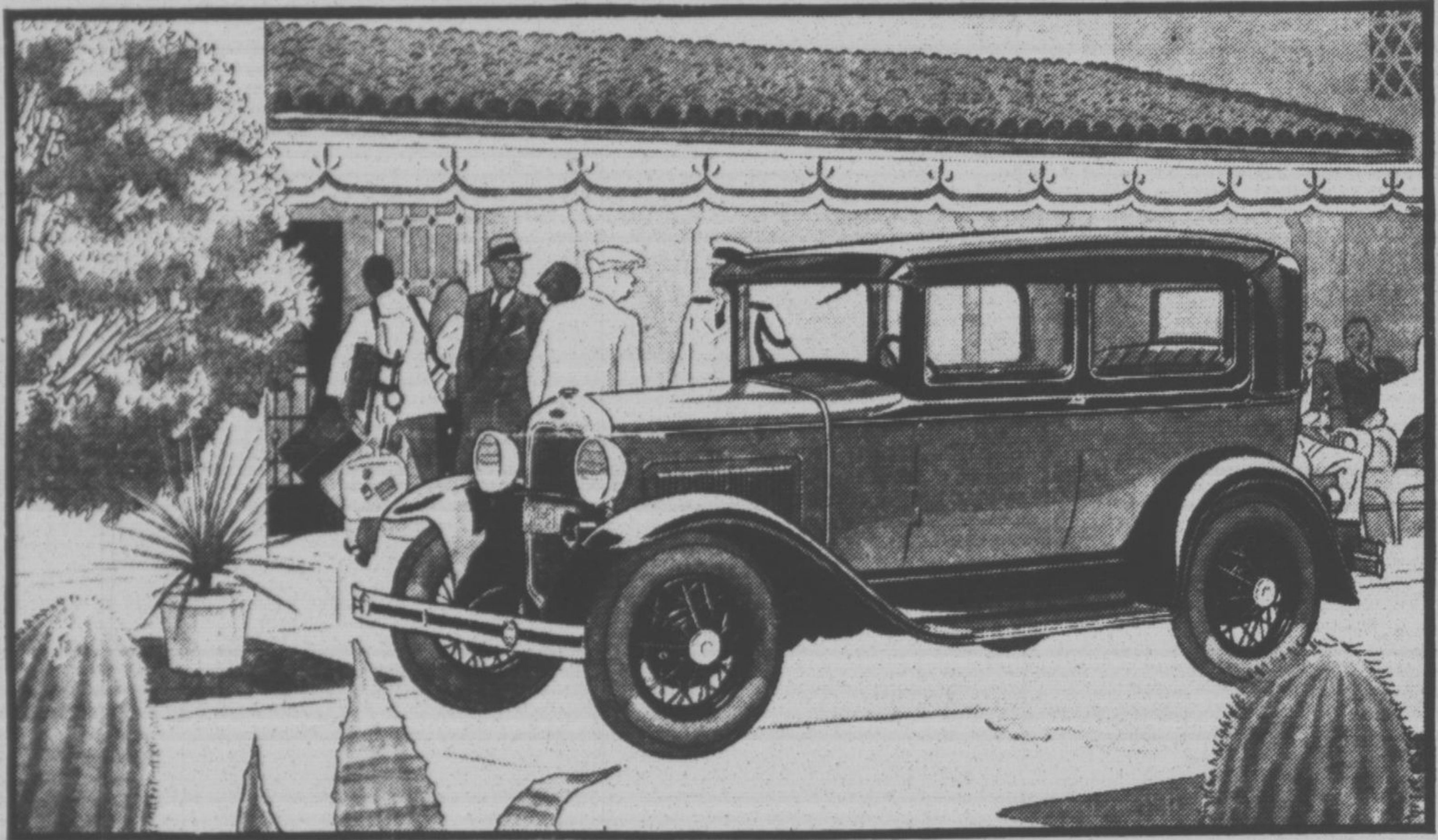
Hands Off!

Scientists say that plants have feeling and that some of them are emotional. Perhaps the cactus is just an old-fashioned girl.—The Pathfinder.

One thing the movie producers seem to have overlooked so far is a harelipped comedian for the talkies.

OUTSTANDING FEATURES OF THE NEW FORD

New streamline bodies. Choice of attractive colors. Adjustable front seats in most bodies.
Fully enclosed, silent four-wheel brakes. Four Houdaille double-acting hydraulic shock absorbers.
Bright, enduring Rustless Steel for many exterior metal parts. Chrome silicon alloy valves.
Aluminum pistons. Chrome alloy transmission gears and shafts. Torque-tube drive.
Three-quarter floating rear axle. Extensive use of fine steel forgings and electric welding.
More than twenty ball and roller bearings. Triplex shatter-proof glass windshield.
Five steel-spoke wheels. 55 to 65 miles an hour. Quick acceleration. Ease of control.
Low first cost. Economy of operation. Reliability and long life. Good dealer service.



THE NEW FORD TUDOR SEDAN

Roadster \$435	Coupe \$500	De Luxe Coupe . . . \$550	Convertible Cabriolet \$645
Phaeton \$440	Tudor Sedan . . . \$500	Three-window Fordor Sedan \$625	
Sport Coupe \$530		De Luxe Sedan . . . \$650	Town Sedan . . . \$670



All prices f. o. b. Detroit, plus freight and delivery. Bumpers and spare tire extra, at low cost.
Universal Credit Company plan of time payments offers another Ford economy.

FORD MOTOR COMPANY