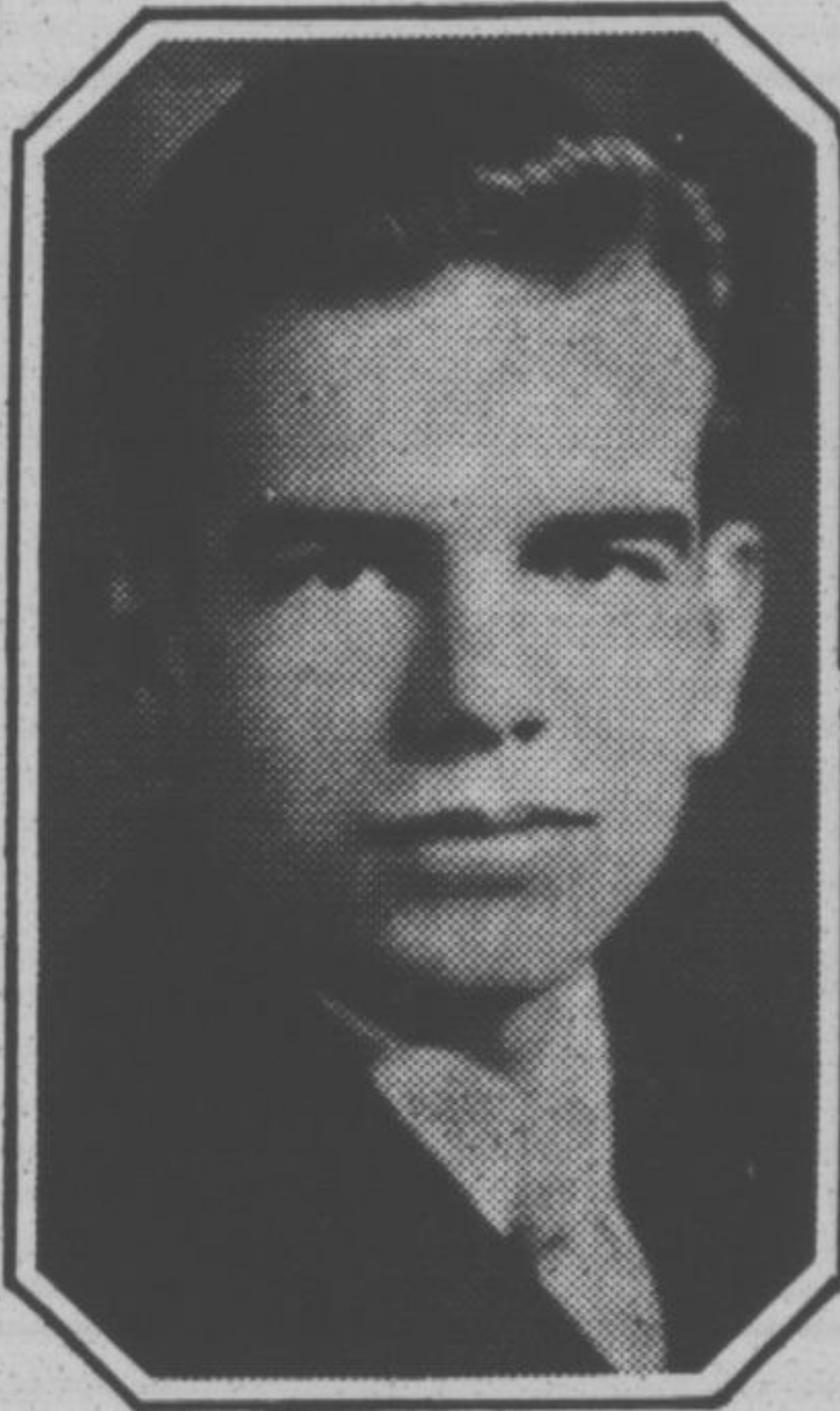


## LOCAL YOUTH ON DEBATING TEAM



LLOYD MCBRIDE



ROBERT NASON



F. ATHERTON BEAN

These three students—two juniors and a senior — of Carleton college, Northfield, Minn., formed the personnel of the first Carleton debating team ever to undertake a tour of the Southern states. Included on the tour, which ended March 20, were five debates. The Carleton speakers won judges' decisions over Louisiana State university and over the University of Florida. The other debates, no-decision contests, were held with

Illinois Wesleyan university, Washington university at St. Louis, and Rollins college in Florida.

The Carleton debaters, Lloyd McBride of Glen Ellyn, Ill., Robert Nason of Highland Park, Ill., and F. Atherton Bean of Minneapolis, are all prominent in college life. McBride, a senior, is a member of Phi Beta Kappa, scholastic society, and of Delta Sigma Rho, honorary forensic fraternity.

Nason, a junior, also took part in intercollegiate debating last year. He is active in social and publications circles on the campus. Bean, a junior, in addition to much debate experience, has won laurels also in oratory. In February he captured first place for Carleton in the Minnesota State Oratorical contest, entitling him to represent Minnesota in the Interstate Oratorical contest to be staged at Lincoln, Neb., April 5.

No sales will be made during the opening, but the store will be opened for regular business at 9 o'clock Saturday morning, April 12. F. C. Whitlock is the manager, and District Supt. D. P. Drennan also will be present at the opening.

The Highland Park store is provided with a complete new line of merchandise of the varied types usually carried in Woolworth stores, of which there are now between 1,800 and 1,900 in the United States and Canada. Nothing is sold at more than ten cents per article in the Woolworth stores in the United States, east of the Mississippi river. In their stores west of the Mississippi and in Canada the limit is 15 cents.

### Getting Better and Better

The span of life lengthens. Our national diet becomes more rational, our public health work more effective.—Woman's Home Companion.



## HEAR RUTH HANNA McCORMICK

Discuss Campaign  
Issues over the  
**RADIO**

### Radio Stations

**WBBM**  
Thursday, April 3rd  
9:00 P. M.

**WJJD**  
Friday, April 4th  
7:15 P. M.

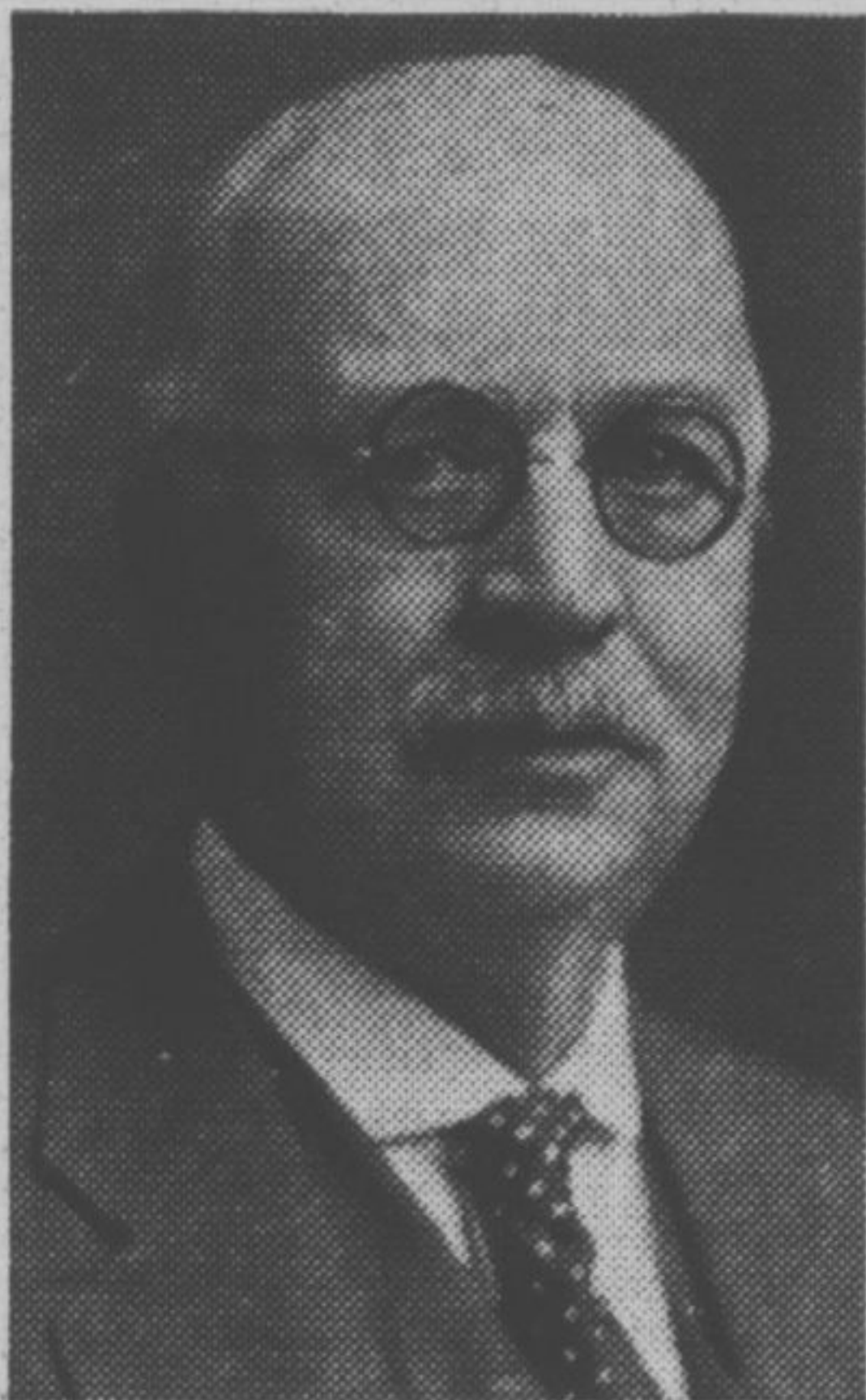
**WIBO**  
Saturday, April 5th  
7:30 P. M.

**KYW**  
Monday, April 7th  
7:30 P. M.

**WLS**  
Monday, April 7th  
8:00 P. M.

Then  
Vote for Her on  
Primary Day,  
APRIL 8, 1930

## TO THE REPUBLICAN VOTERS of the Eighth Senatorial District



My candidacy for renomination is based on my record as a member of the Illinois Legislature. The record shows that I have stood for more hard roads without expense to the general taxpayers, for a more equitable distribution of taxes to relieve the owners of farms and small homes, for every reasonable relief, for agriculture, for economy in state expenditures so that local taxes will be lower and against the scheme of Chicago to redistrict the state and thereby transfer perpetual control of our state to Chicago and its unsavory political gangs.

I am asking of your continued support confident in the belief that I can render further useful service to the people of our district because of the valuable experience and knowledge gained during the years I have served you.

N. L. JACKSON,

Candidate for State Representative

**N. L. JACKSON**

Primaries April Eighth

## Sample of Largest of Fruit Clusters Shown in Museum; Sago Palm

A specimen of what is one of the world's largest kinds of fruit clusters—an eight-foot long cluster of fruits of the sago palm—has been added to the exhibits in the hall of plant life at Field Museum of Natural History, it was announced today by Stephen C. Simms, director.

The specimen was obtained by the Marshall Field Brazilian expedition, and it contains thousands of the characteristic scaly shiny fruits, which have been preserved in perfect condition. Although it was obtained in the principal sago palms of the East South America, it represents one of Indies, according to Dr. B. E. Dahlgren, acting curator of botany at the museum.

The sago palm flowers only at maturity. The flowering begins at the top and progresses downward during a period of about two years. To obtain commercial sago the tree is cut down before flowering, and the sago is removed from the inside of the stem.

## F. W. Woolworth Co. Store Opens April 11

The F. W. Woolworth company's new 5 & 10 cent store at 510 Central avenue will be formally opened on Friday, April 11, from 2:30 to 4:30 o'clock in the afternoon. The public is cordially invited to attend this opening, and free toy balloons will be distributed for the children.