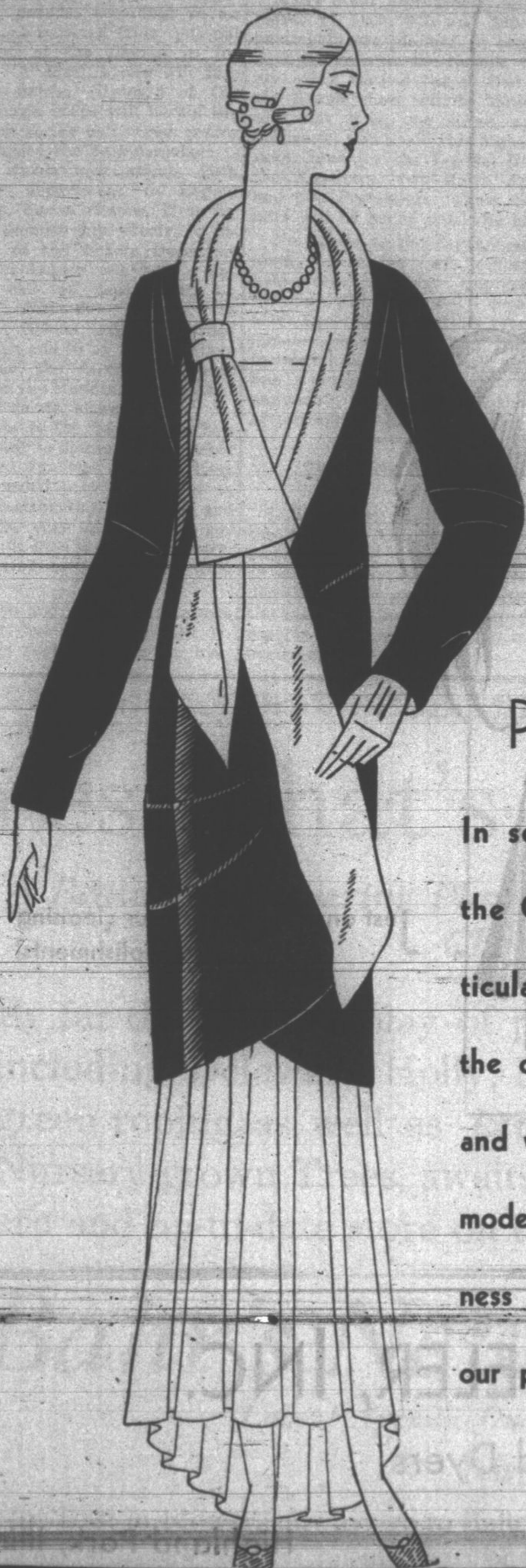


★ ★ ★ THE STORE OF THE CHRISTMAS SPIRIT ★ ★ ★
THE EVANSTON STORE—CHURCH AND SHERMAN
MARSHALL FIELD & COMPANY



★
 EVENING
 APPAREL
 FOR THE
 ★
 CHRISTMAS
 PARTIES

In selecting our Evening Wear for the Christmas season, we gave particular attention to the demands of the college girl. Our formal dresses and wraps are representative of the modern styles... emphasizing youthfulness of line and gaiety of color. And our prices are decidedly reasonable!

Note: change of store hours . . . through December 23, 9:30 a. m. to 9 p. m.; December 24, 9 a. m. to 6 p. m. Phone Greenleaf 6600

Special Holiday boxes of candy, 1st floor. Christmas paper and ribbon, 3rd floor.

At left: VELVET WRAP for evening. In black, trimmed with white or eggshell velvet. Lined and inner-lined. Sizes 13, 15 and 17. At \$35. In the Junior Section.

FORMAL EVENING DRESS of taffeta moire. The back is cut in a "V" line and trimmed with a large bouffant bow. Has a long regular skirt and fitted yoke hip-line. Bow and rhinestone buckle in front. In the new, bright shades, black and ivory, 14 to 20. \$25. In the Misses' Section.

FOURTH FLOOR