

SHOP AND MAIL NOW POST OFFICE SLOGAN

Urges Necessity of Getting Holiday Mail Off in Time; Directions

"Shop and Mail Now for Christmas" is the slogan of the post office department as the holiday season approaches. The following directions for preparation for Christmas mailing have been issued by the department through the local post office:

All parcels must be securely wrapped or packed. Use strong paper and heavy twine.

Umbrellas, canes, golf sticks, should be reinforced their full length by strong strips of wood tightly wrapped and tied or otherwise sufficiently wrapped to withstand transportation.

Hats: Pack in strong corrugated or fiber boxes. Ordinary pasteboard hatboxes must be crated. Ladies' hats and stiff hats easily damaged should be marked "FRAGILE."

Shoes: Pack in strong boxes, preferably corrugated cardboard. Wrap with strong paper securely tied with heavy twine.

Cut flowers: Place in strong suitable boxes of wood, tin, or heavy corrugated cardboard. Wrap with tissue to retain moisture.

Candies: Inclose in strong outside boxes or containers.

Drawings, paintings, unmounted maps, etc.: Pack or wrap in strong material to avoid damage. When not flat, roll around a wooden core and then wrap and tie carefully or place in strong pasteboard tube.

Sharp-pointed or sharp-edged instruments or tools must have points and edges fully guarded to prevent injury to clerks in handling or damage to other mail. Crate suitably or thoroughly wrap so that they can not cut through the wrapping.

Fragile Objects

Articles easily broken or crushed must be crated or securely wrapped. Use liberal quantities of excelsior, or like material, in, around, and between the articles and the outside container.

Glassware, fragile toys, crockery must be packed so as to prevent the escape of particles or pieces if broken in transit.

Cigars: Ordinary boxes of cigars wrapped in paper only will not be accepted. Pack in a manner to prevent damage by shock or jar. Wrap in corrugated pasteboard or similar material.

All articles easily broken or damaged must be plainly marked "FRAGILE."

Perishable Matter

Articles likely to spoil within the time reasonably required for transportation and delivery will not be accepted for mailing. Wrap or pack carefully, according to contents, and plainly mark all such parcels "PERISHABLE." Use special-delivery stamps to expedite delivery.

Addresses should be complete, with house number and name of street, post-office box or rural-route number, and typed or plainly written in ink. A return card should be placed in the upper left corner of every piece of mail. If a tag is used, the address and return card should also be written on the wrapper for use if tag is lost, and a copy of the address should

be inclosed inside the parcel. Postage must be fully prepaid on all mail. In sure all valuable mail.

No parcel may be more than 84 inches in length and girth combined. For delivery locally and in the first, second, and third zones, 70 pounds is the maximum weight; in all other zones, 50 pounds.

Early Mailing

During the holiday time the volume of mail increases approximately

200 per cent. It is a physical impossibility to handle this great mass of mail matter efficiently and promptly within a few days. Therefore to assure delivery of their Christmas presents, cards, and letters by Christmas day the public should SHOP and MAIL EARLY.

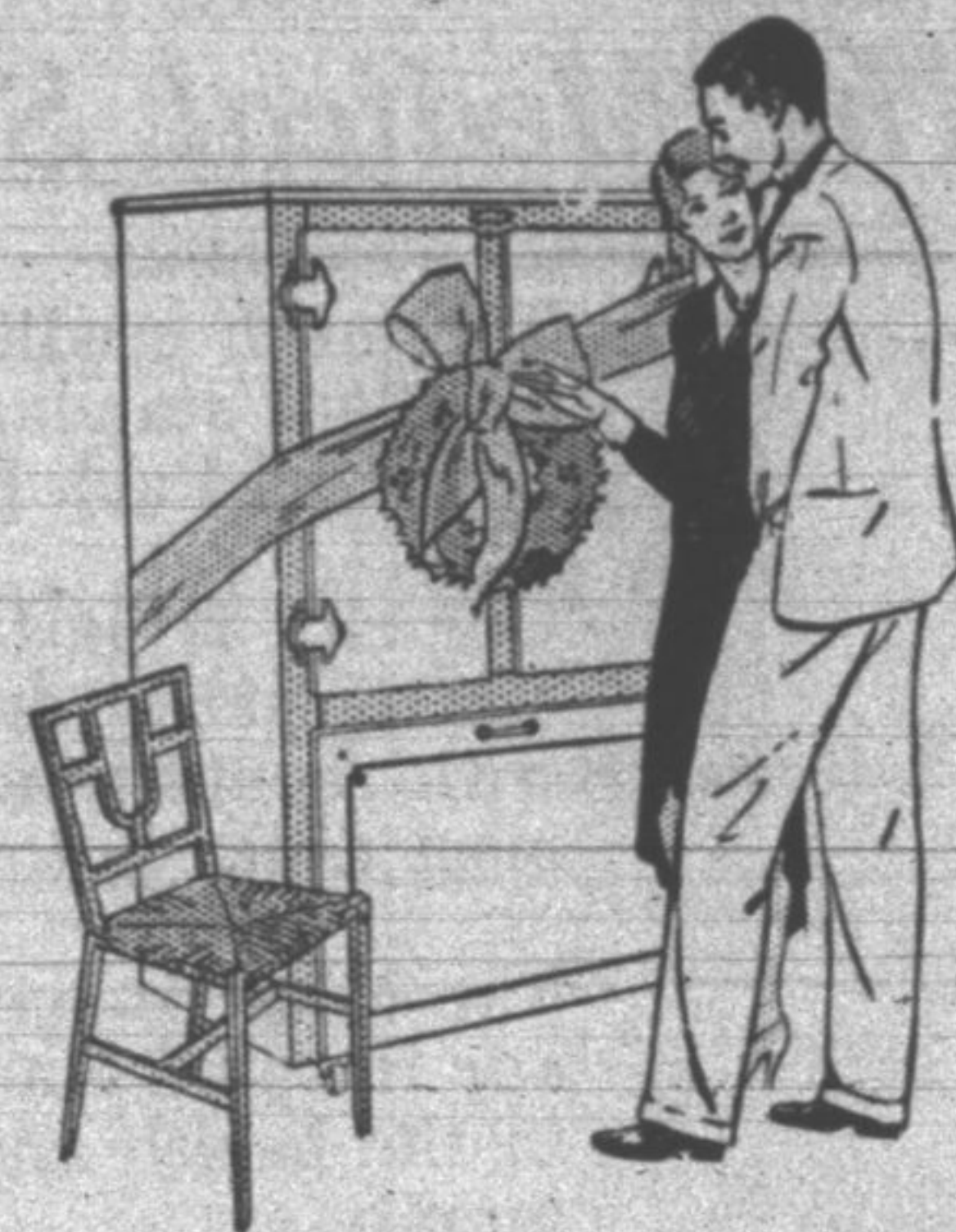
Christmas Cards

Patrons sending a quantity of Christmas cards, say 10 or more, should prepare and mail them two or

three weeks in advance, as millions are mailed and they can not possibly be handled and delivered if mailed only two or three or four days before Christmas. To avoid this, patrons may mail their cards two or three weeks before Christmas, if delivered to the post office or postal station in person, or tied together in a bundle, labeled to show that they are Christmas cards, and deposited in a street (Continued on page 25)

9-441

A Christmas hint to husbands



See these Frigidaires, all in rust-proof Porcelain-on-steel

VISIT our display room and see the Frigidaires now offered for Christmas delivery. All are strikingly beautiful. For every household Frigidaire is now rust-proof Porcelain-on-steel, outside and in. The shelves are removable, spaced to hold large quantities of food and elevated to a convenient height.

And, every household model is now equipped with the famous "Cold Control," that speeds the freezing of ice cubes and desserts. The mechanism it controls is extra-powerful... meeting every demand with effortless ease. Fur-



thermore, this mechanism is incredibly quiet and it is completely enclosed in a separate compartment in the bottom of the cabinet.

With all of these features, Frigidaire prices are remarkably low and our special Christmas terms make any household model unusually easy to buy. Call at our display room for complete information.

Special Christmas Terms

We are now making a special offer on all household Frigidaires bought for Christmas. Call at our display room for full details about this offer now.

FRIGIDAIRE

More than a MILLION in use

STOVER CO.

Michigan Ave. at Randolph St. - 151 N. Michigan Ave. - Randolph 4950
HIGHLAND PARK—Stover Co., 382 Central Ave., Highland Park 150
HUBBARD WOODS—Stover Co., 956 Linden Ave., Winnetka 1512
EVANSTON—Stover Co., 1631 Sherman Ave., Greenleaf 4480
PUBLIC SERVICE COMPANY OF NORTHERN ILLINOIS—At all their offices