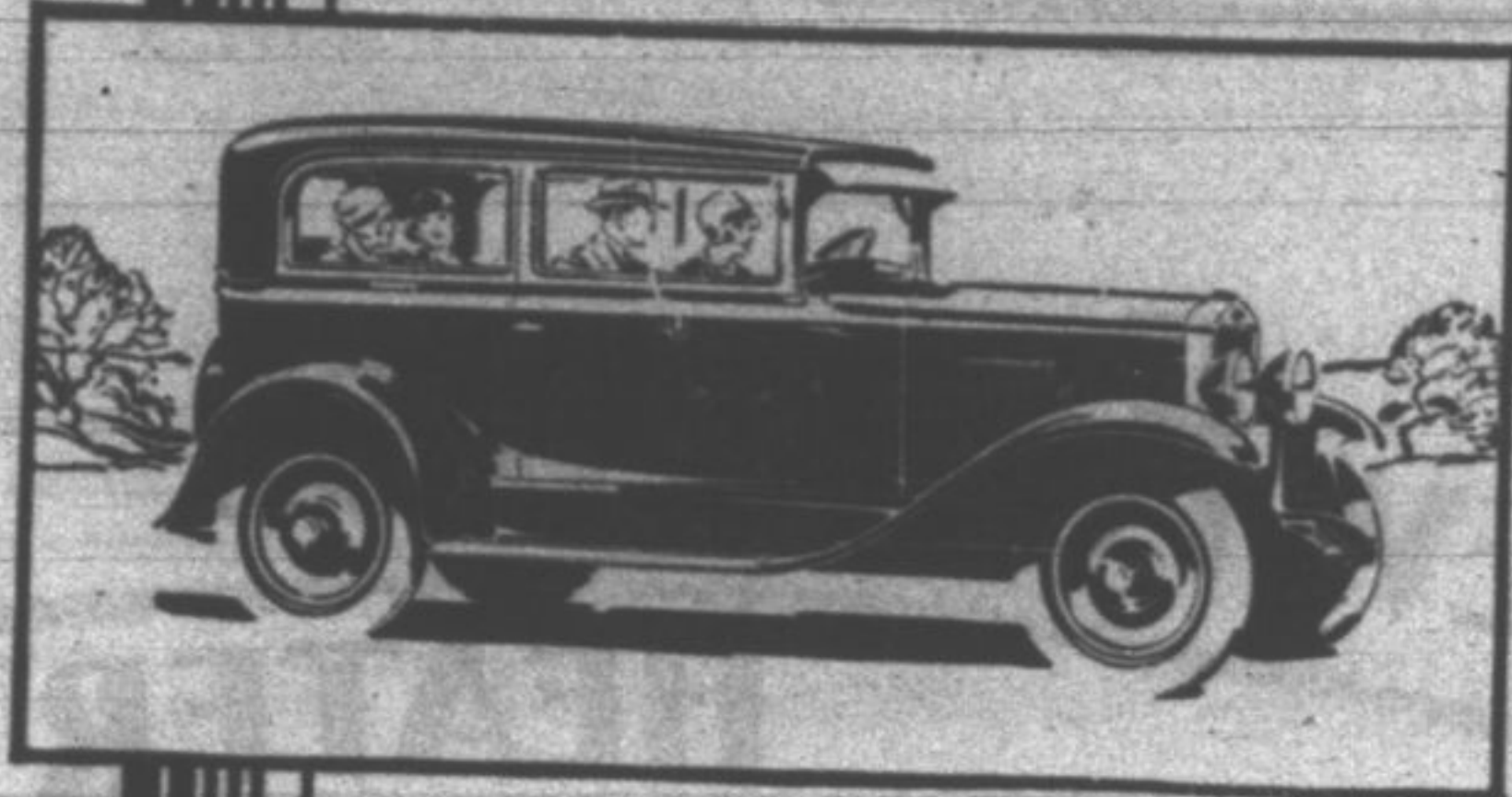


for Economical Transportation



“EVERYBODY’S SIX”-



Smart • Smooth • Safe
Dependable • and Priced
Within the Reach of All!

THE new Chevrolet was designed and built to bring the advantages of six-cylinder performance within the reach of all those who can afford any automobile. For that reason it has met with sensational success—more than a million two hundred and fifty thousand on the road in less than nine months!

We cordially invite you to come in and see this remarkable car. Its smart Fisher bodies are styled in the latest mode—with tasteful mouldings, concave front pillars and oblong windows. Its great six-cylinder valve-in-head engine is smooth, powerful and un-

usually swift in acceleration. It is designed throughout for greater safety and dependability. And its low first cost, combined with its outstanding economy of operation, makes it truly “Everybody’s Six.”

Come in today for a demonstration!

The ROADSTER.....	\$525	The SEDAN.....	\$675
The PHAETON.....	\$525	The IMPERIAL SEDAN.....	\$695
The COACH.....	\$595	The SEDAN DELIVERY.....	\$595
The COUPE.....	\$595	Light Delivery (Chassis only).....	\$400
The SPORT COUPE.....	\$645	1½ Ton Truck (Chassis Only).....	\$545
		1½ Ton Truck (Chassis with Cab).....	\$650

All prices f. o. b. factory, Flint, Michigan.
Consider the delivered price as well as the list (f. o. b.) price when comparing automobile values. Chevrolet delivered prices include only authorized charges for freight and delivery, and the charge for any additional accessories or financing desired.

WM. RUEHL & CO.

120 North First Street

Telephone 1110

A SIX IN THE PRICE RANGE OF THE FOUR!