

### Hints for the Home

You are planning a special luncheon—and have no maid? Then choose recipes that can be partly prepared in advance, and a menu that permits easy service—the main course on one plate, let us say. If attractively arranged this is permissible for informal service.

Usually the unruly member of "plate service" is the salad, which, if it is to be appetizing, must not spread or allow its dressing to wander to other parts of the plate. Good recipes for this purpose are the jellied salads: Asparagus tips, egg and pimiento molded in lemon-flavored gelatin and garnished with a puff of mayonnaise; pineapple, shredded cabbage and cucumber in gelatin; fruit salad, and almost any combination of cooked vegetables can be molded in jelly.

These can always be made the evening before and set away in the ice box until wanted—relieving the cook of one trouble—some course to prepare on the day of entertainment.

A very good plate service menu is the following:

- Persian Melon
- Breaded veal cutlet
- Shoestring potatoes
- Creamed peas and mushrooms in green pepper cases
- Jellied vegetable salad
- Mocha Mousse
- Coffee

#### Virginia Soup

Soak a cup of dried lima beans overnight. Drain next day and put them in a kettle with two quarts of cold water. Add a ham bone and a cup of ham cut in tiny pieces, and simmer until almost tender. Peel two sweet potatoes, add to the beans and boil until soft; rub through a strainer, season with salt and pepper and serve very hot.

#### How to Fry Raw Potatoes

Peel potatoes and slice them in thin rounds; put into frying pan 1 tbl. each butter and sweet lard. When this is hot enough to fry, add potatoes, sprinkling with salt and pepper. Cover with a tight-fitting lid so the steam will partly cook them. Then remove lid and fry until potatoes are a golden brown, turning them carefully so they will brown equally. Serve at once.

#### Russian Salad

1 cup cooked diced beets; 1 cup cooked peas; ½ cup diced celery. Blend with Russian dressing; serve on crisp shredded lettuce and garnish with hard-cooked egg.

#### Pineapple Caramel Pudding

Caramelize 1 cup sugar and put in buttered shallow, square pan. Cut slices of pineapple into quarters and arrange on bottom of pan. Over this pour your favorite sweet muffin batter and bake. Turn on a large plate so the pineapple will be on top, and serve with whipped cream.

#### Cleans White Enamel Quickly

When washing your white enameled cooking utensils, stains will come off readily if you dip the wet cloth in baking soda and rub over the enamel. Use plenty of soda.

#### When Basting Meat

It is always better to use fat, or

butter mixed with water when basting meats. Plain water or juice that contains little fat dissolves the outside coat of the meat, releasing both juice and flavor.

### LAND OWNER MAY PROHIBIT FISHING

#### But May Not Interfere with Navigation of River Bordering Property

Since driving cattle along a public highway, and allowing the cattle to eat the grass along the road, are two totally different things, fishing in certain parts of the Fox river will probably stop.

This means, in other words, that the owner of land along a navigable stream may prohibit fishing in so much of the stream as flows by—or over—his land.

This ruling was sent today to Latham Castle, states attorney of DeKalb county, by attorney general Oscar E. Carlstrom. For his ruling, the attorney general fell back upon an opinion of the supreme court in an almost identical case, which said in part:

"Complainant claims he has the right to shoot the wild fowl from his boat, because, as the waters were navigable, he had the right to be there; that there being no property in wild fowl until captured, if he committed no trespassing in being there, no action will lie against him for being there and shooting wild ducks.

"There is a plausibility in the position which is quite forcible. But the defendant had no right to be where he was except for the purpose of pursuing the implied license held out to the public of navigating the waters. It does not follow that because a person is where he has a right to be that he cannot be held liable in trespass. A person has a right to drive his cattle along a public highway but he has no right to depasture the grass in the highway with his cattle. The public has the right to use (the stream) as a public highway, but every other beneficial use and enjoyment belonged to the owner of the soil."

Carlstrom added, however, that while the landowner on the Fox River might prohibit fishing, he could not prohibit operation of boats along the watercourse.

They say that silence is golden and yet we never knew of any oysters that had a big bank account.

### New Regulations to Govern Aeronautics

New regulations for airplane pilots in effect Sept. 1, which are designed to protect the flying public and aid the aeronautic industry have been completed by the commercial department under the direction of Clarence M. Young, assistant secretary of commerce for aeronautics.

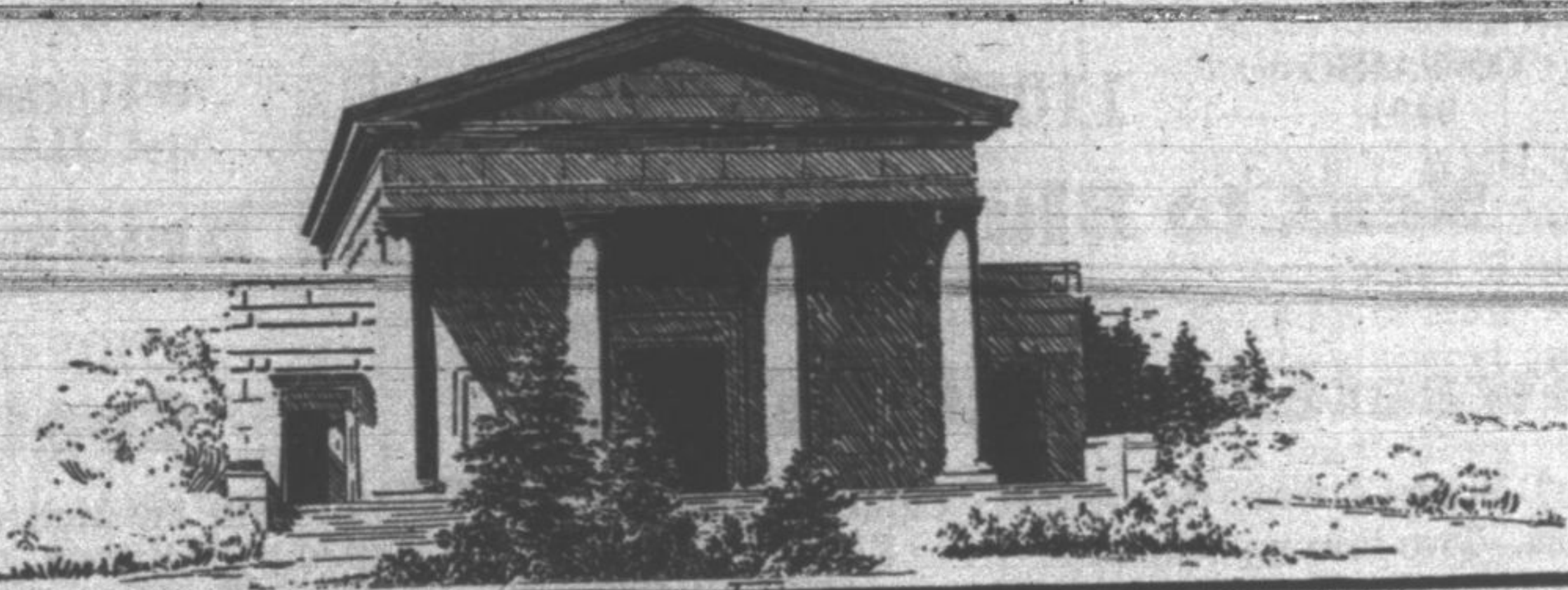
The regulations provide that a transport pilot can carry passengers and property only in aircraft specified on his license.

A minimum of 200 hours solo flying experience, knowledge of the government's air traffic rules and rigid physical examinations at regular intervals are stipulated.

The new rules also require demonstrations of emergency maneuvers such as spins, side slips, recoveries from stalls, and climbing turns.

### County Teachers Hold Meeting on Saturday

Teachers of the county held a meeting Saturday at Libertyville, under leadership of T. A. Simpson, county superintendent of schools. Miss Mary N. Williams of Chicago, discussed reading in primary grades and Miss Laura H. Pricer reading literature for the upper grades.



## ROSEHILL MAUSOLEUM

### Sentiment Immortalized in Marble!

You are naturally proud of your family name—the memory of dear ones is sacred to you. It is easily within your power to give to future generations an everlasting symbol of your sentiment.

A family memorial in warm, softly lighted, cathedral-like Rosehill Mausoleum will appear exactly as it is today to those who stand before it a thousand years from now. The finest marbles and bronze promise beauty and permanence—but an even greater assurance of changelessness is found in the irrevocable State Charter and the two mighty trust funds which guarantee perpetual care, replacement, and protection from change or desecration of any kind.

Appropriate arrangements are often difficult to make when judgment is biased by the exigencies and sorrow of the moment. Visit Rosehill this week—select arrangements that are suitable—the cost is agreeably moderate. Write for, or receive in person, the free booklet, "Rosehill the Beautiful." This in no way obligates you.

*For those who prefer ground burial we have a very large selection of family lots for two graves or more, at most reasonable prices, all under Perpetual Care.*

## ROSEHILL CEMETERY COMPANY

5800 Ravenswood Avenue - LONGbeach 5940  
City Office: 33 South Clark Street - FRAnklin 1287

(C) R.C. Co. 1929