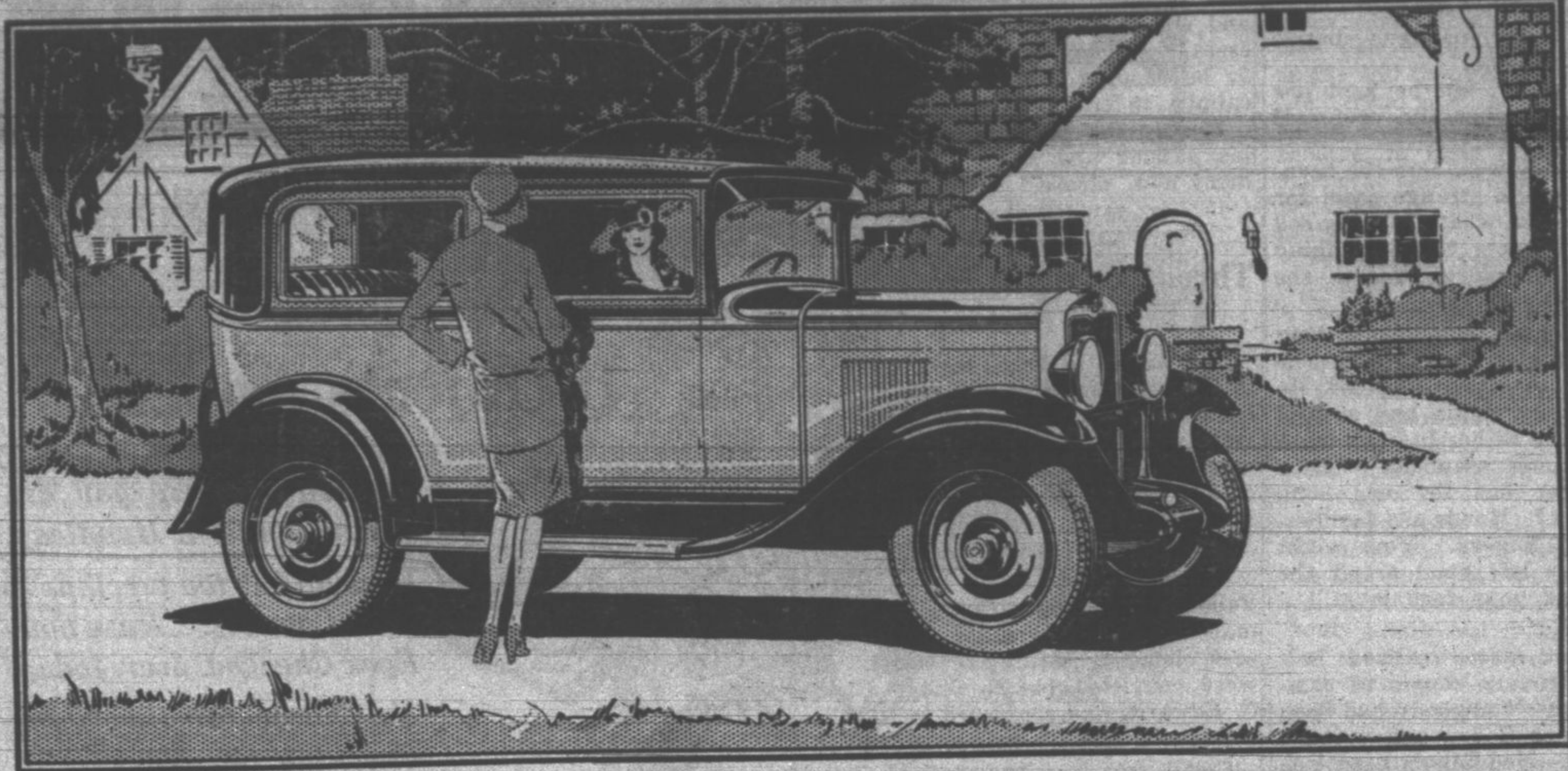


# THE CHEVROLET SIX



*for Economical Transportation*



*In Design - - -*

*In Materials - - -*

*In Workmanship*

**Built to the Highest Standards! - - -**

Most people realize that the New Chevrolet is a Six in the price range of the four. But not everyone knows what a really wonderful Six it is!

The Chevrolet engineering staff spent more than four years in the development of the Chevrolet Six. Materials are selected from the world's finest markets and, taken altogether, there are nine thousand inspections during the car's production and assembly!

The result is exactly what you'd expect—*quality in design, in material and in workmanship that assures years of dependable and satisfactory service!*

Come in today. We want you to see and drive this car—for it will give you a new idea as to what the buyer of a low-priced car can now expect for his money!

*The Roadster, \$525; The Phaeton, \$525; The Coach, \$595; The Coupe, \$595; The Sport Coupe, \$645; The Sedan, \$675; The Imperial Sedan, \$695. All prices f.o.b. factory. Flint, Michigan.*

(392-487)

## WM. RUEHL & CO.

120 North First Street

Phone 1110

A SIX IN THE PRICE RANGE OF THE FOUR