

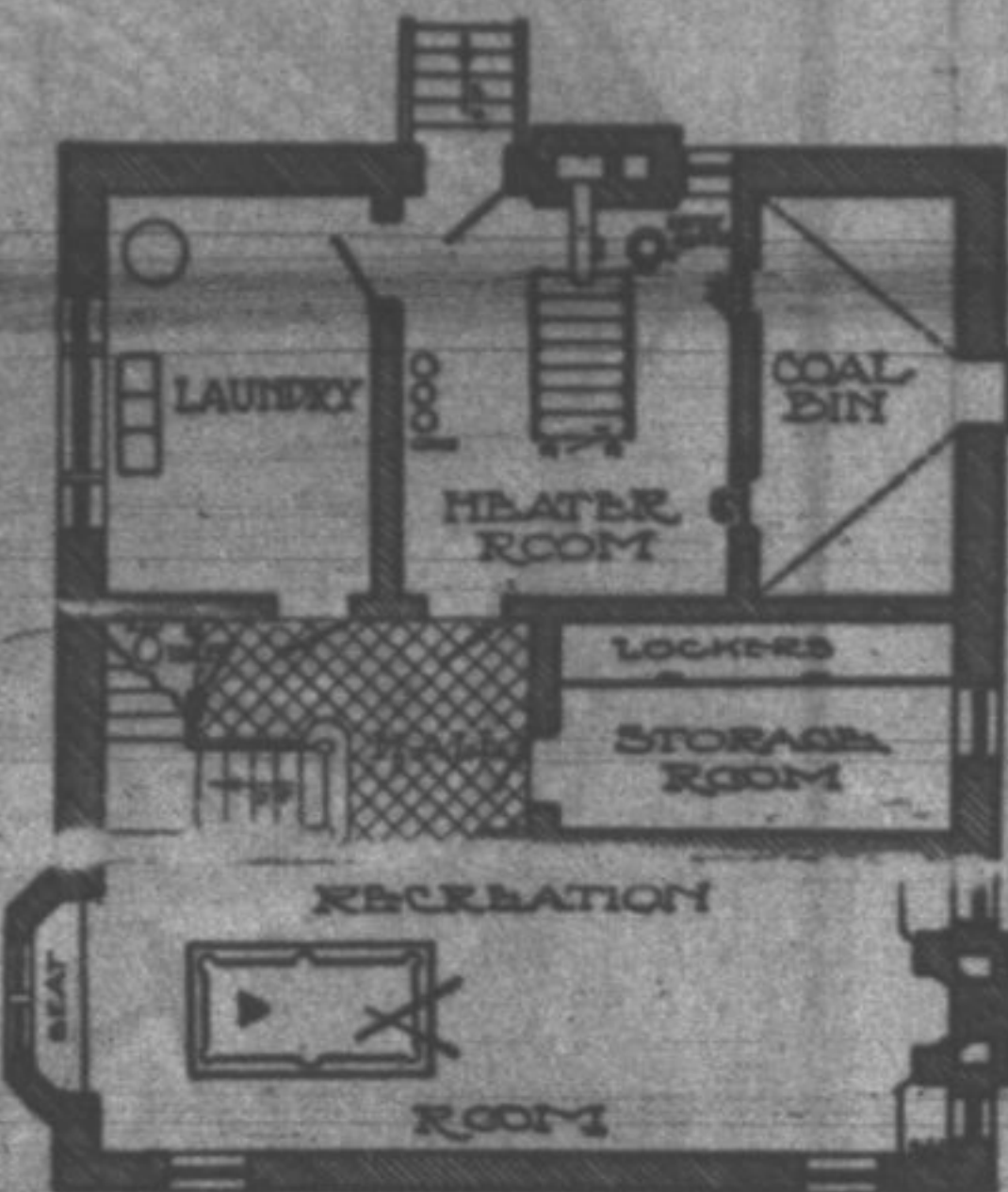
ADD EXTRA ROOM TO HOME IN BASEMENT

Hints on How to Make Space in that Section of House for Varied Uses

Careful designing of the basement is a matter that has much more important results than one might think; it not only conserves valuable space, making it produce pleasure for every member of the family, but is also an important factor in the heating efficiency of the building.

The first thing that directs basement design is the heating plant. A furnace should be placed as near as possible to the center of the house—at least, the center as far as one diameter of the house is concerned, although it may be moved toward the edge of the other diameter. A boiler may be placed in the corner of the basement, but most heating contrac-

tors will prefer a central location. So the designing of your basement should begin by locating a room down the center of one side for the heating equipment. The accompanying cut



suggests a feasible location, with the coal bin on one side and the laundry on the other, thus keeping all the strictly utilitarian and less beautiful

parts of the basement together.

Some sort of partitioning off of the heater room is, without exception, desirable. In houses where coal is burned it is necessary, and the partition should be dust-proof. Ashes and coal dust will sift out into the air, no matter how carefully handled, and if they get out into the recreation rooms, these immediately lose their attractiveness. When oil or gas are burned the partitioning need not be so heavy, but there should be something to screen them off, not only for appearance sake, but to keep children who are playing about in the basement from accidental contact with them or deliberate mischief.

Place to Dance

The heating equipment is too important to be allowed to go unprotected from energetic and investigative small fingers and minds. One clever woman recently designed an attractive screening for her oil burner—inexpensive, but adequate. She "fenced" the boiler, the water heater and water softener in with a latticework, painted a light warm green. A swinging door (like a rustic gate) gave entrance to the equipment. Floor, ceiling and walls outside the fence were all given coats of green, and the space used for dances. This is a very satisfactory treatment when basement space is very small.

The division of the rest of the basement into rooms depends a good deal on the family's particular needs and the amount of space available. The accompanying floor plan suggests an excellent scheme; the floor plan is as carefully planned as that of the upper floors of the home.

The coal bin is larger than necessary, and so is built with a floor that slopes down from the window to the floor at the inner wall. This inner wall is made of brick in order to be perfectly dustproof, and has two wooden sliding panels through which

coal is drawn for use in the boiler. There is never any need to enter the coal room, for the slope of the floor automatically gathers the coal together where it can be easily reached through the panel openings. The chance for the escape of dust is minimized. This change is, however, only possible when there is a large amount of space for coal storage. Another convenience that is often disregarded is that the direct exit to the back yard is through the heater room. Ash cans never need to be dragged through any other part of the house on their way to the alley.

Youths Arrested Here Are Sent to Pontiac

Three youths who were arrested in Highland Park for holdup and stealing a taxicab in Wilmette early on the morning of August 13, were sentenced to from 1 to 20 years in Pontiac in Judge Gemmill's court in Chicago last Friday.

Jack Appel, 17, and George Murry, 19, both of Chicago, and Melford William Tull, 19, of Kansas City, were the boys sentenced. A fourth boy is said to have escaped when the trio were arrested by Policemen John White and Edward Patton in Highland Park, within an hour after they had held up Harry R. Baker, a Wilmette cab driver with a toy pistol, and taken \$4 and his cab.

They were taken to Wilmette on August 15, and arraigned before Judge Dan Mickey, who bound them over to the Cook county grand jury.

The season when the young people can get drowned in canoes is about over, but the boys still have a chance to get smashed up playing football.

The senatorial debate on the tariff may not enlighten the country much, but anyway it will make the senators feel better.

EMILY PARSONS HUNT

Piano Studios

1574 SHERMAN AVENUE
EVANSTON

THE FINE ARTS BUILDING

Chicago

(By Appointment)

TELEPHONE UNIVERSITY 6339

Beauty Counsel—

Muscles of the face receive little exercise. In time, these muscles relax their duties and the result is unlovely, sagging faces.

To prevent this occurrence

Comes the CONTOURATION TREATMENT. A scientific massage designed to stimulate the face muscles

And perfect the Contour!

BORCHARDT BEAUTY SHOP

12 North Sheridan Road Phone Highland Park 920

MILDRED HAESSLER

Announces

The reopening of her classes in Ballet, Tap and Character Dancing on Saturday Morning, October 5th, in the Art Room of the Ravinia Auditorium.

Beginners class on Saturday morning limited to ten. New Class in "Tap" on Mondays, at 3:30, open to all ages.

For further information telephone H. P. 1330.

ENJOY THE WORLD SERIES IN YOUR OWN HOME

over a

MAJESTIC HUMLESS RADIO

Arrange With Us For a Free Demonstration in Your Home

STEFFEN AUTO SUPPLY

Phone Glencoe 6

15-17 North Second Street

Phone Highland Park 350