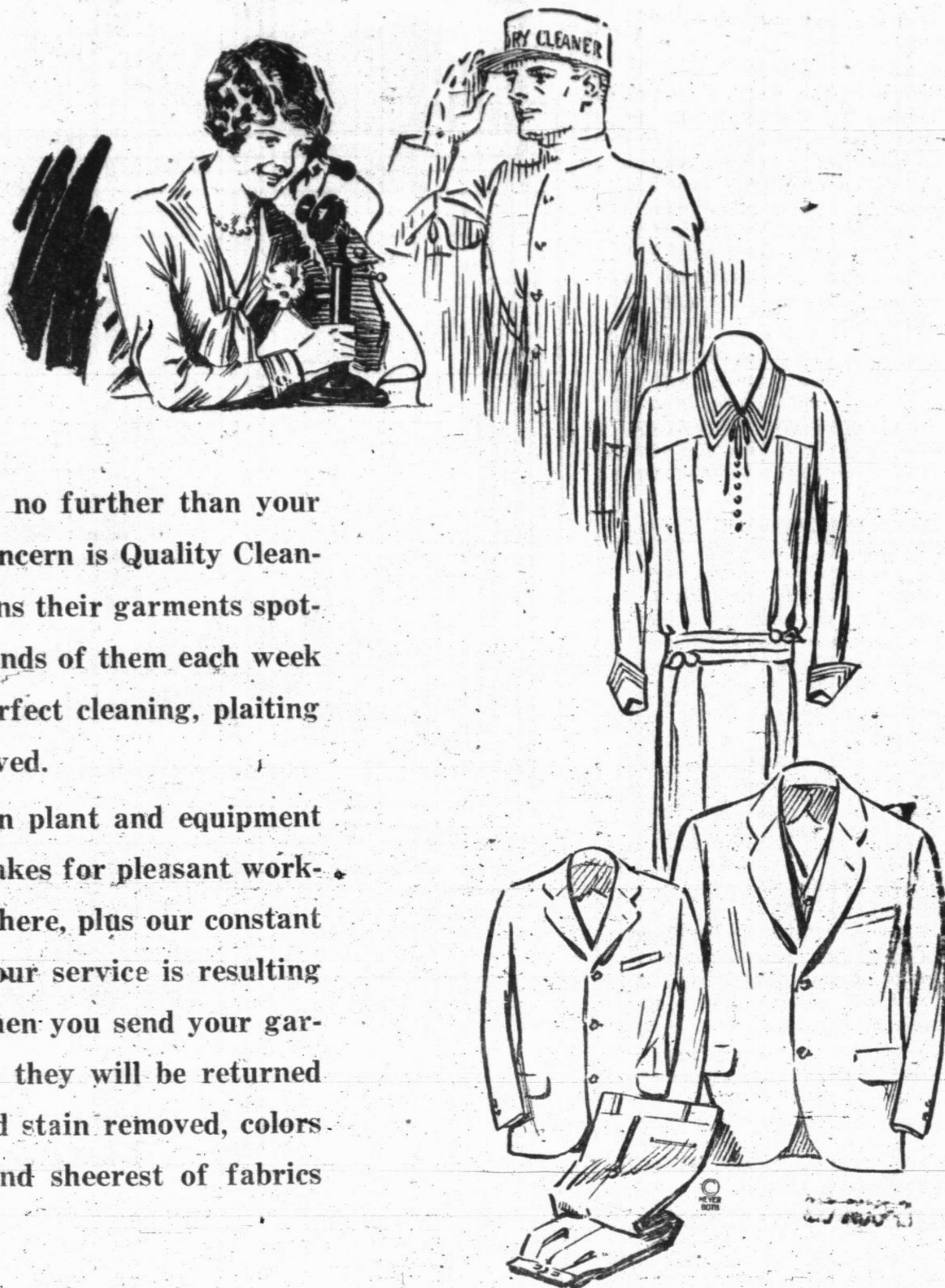


Right at Your Elbow!



Our superior dry cleaning service is no further than your telephone, and women whose chief concern is Quality Cleaning have found that Shore Line returns their garments spotless and beautifully finished. Thousands of them each week are more than delighted with the perfect cleaning, plaiting and pressing their dresses have received.

Extensive resources, an ultra modern plant and equipment with lots of space and light, which makes for pleasant working conditions and a sanitary atmosphere, plus our constant endeavor to improve the quality of our service is resulting in work that is seldom equalled. When you send your garments to Shore Line you know that they will be returned fresh and lovely, with every spot and stain removed, colors brightened, and the most delicate and sheerest of fabrics unharmed.

Special for One Week

Ladies' Wool Dresses Cleaned and Pressed

\$1.50

Below is an exact sketch of our new ultra modern \$100,000 plant

1215 Washington Ave.
Wilmette

Successors to
Krauss Cleaning Co.

SHORE LINE CLEANERS, INC.

A PHONE CALL WILL BRING OUR TRUCK TO YOUR DOOR

NO TOLL PHONES

GREENLEAF (Evanston) 3400
WILMETTE 3400

GLENVIEW 320

HIGHLAND PARK 3400
GLENCOE 1300



Says Flow Always Fever

Hay and v the national itely cleared are the sole N. B. Herma hay fever in connection for the first ease can be d munization.

Hay fever horse dandruff ers and even article in Fa tain kinds of malady, he it was thoug caused only ma was in so colds and bro however, it h that the two lated and th about by ma

After isol fever, scienti small portion hair, pig bris fensive mate skin of the p in ten of f is positive an The next ste tinent with ar that causes part to ten are used for one to one th ferers. Imi lasts for a ments give p

No Chanc Mone

Hope of re county treas eka, Kans., is considered board of tr two years ag of Roy Brac who deposite

W. T. Har who made a vestigate p sum, declar two membe George McC given the ac of attorneys percentage f

This firm, them that it to get the 10

Since the ferences wi Hardie state trustees are a hopeless c

Not The mon county. Fri Pearsall, an tried with E a conspiracy 000 for th Bracher's pe

In return real and p trustees for tion as a pr ers. Since ceived close but the p enough to n gregate, tru