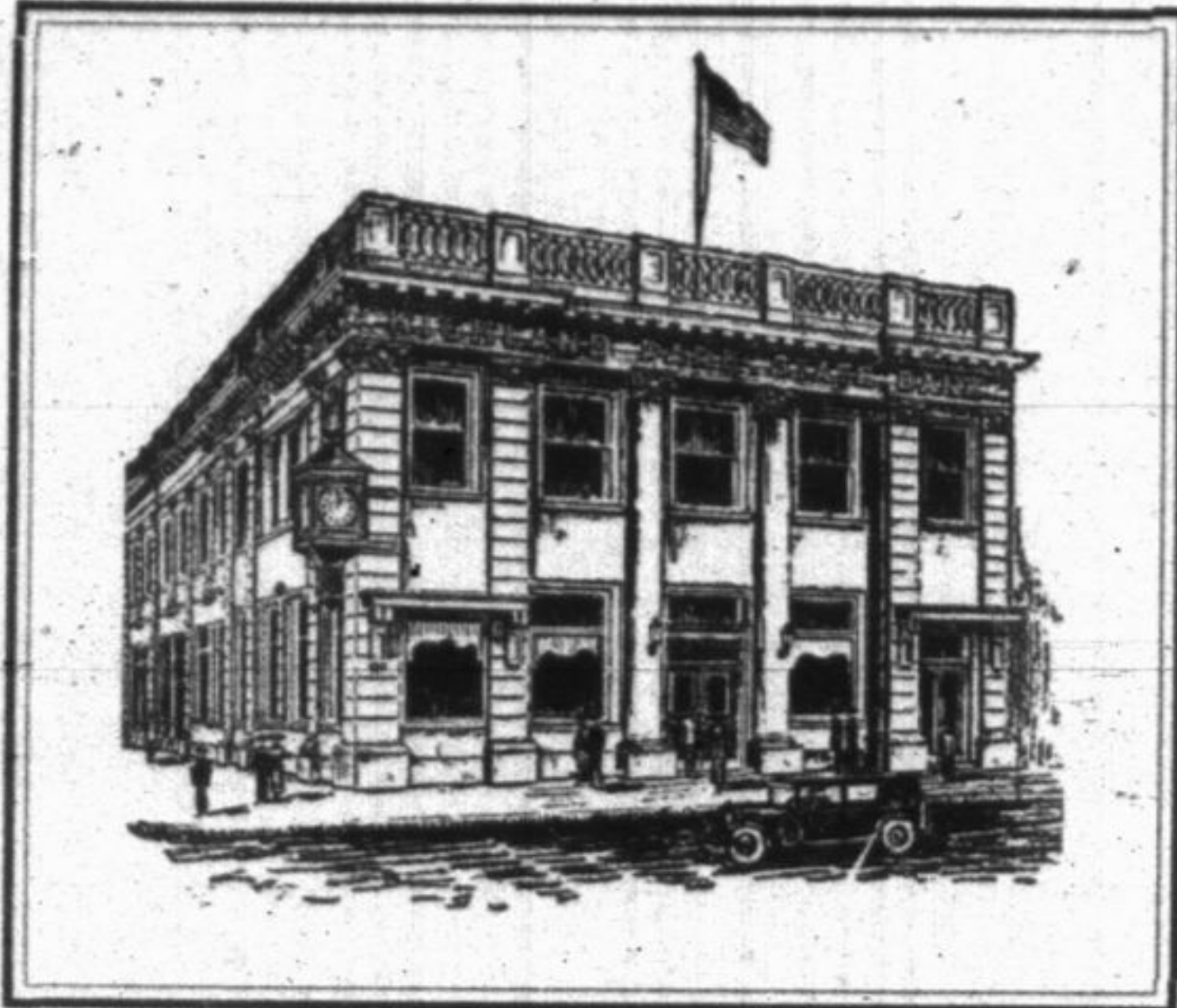


# A Valuable Asset



One of your most valuable assets is good credit. Do not jeopardize it by failing to take care of your obligations promptly. When a note comes due or an interest payment is due, pay them on the right date. Make arrangements for renewing a note, if necessary, before it comes due.

All these rules properly followed out help to maintain your credit standing. The money this bank loans out belongs to its depositors and we must protect the money they have placed with us for safe keeping. That is why we ask your co-operation in taking care of obligations promptly.

## HIGHLAND PARK STATE BANK

*The Home of Savings Depositors*

### Factory to You Sale!

A dollar bottle of  
CARA NOME PERFUME  
FREE WITH  
CARA NOME  
FACE POWDER

**\$2**

A can of  
GENTLEMEN'S TALC  
FREE WITH  
KLENZO  
SHAVING CREAM

**39c**

75c Puretest Rubbing Alcohol	49c
25c Epsom Salts	19c
69c Anticeptic Gargle and Mouth Wash	59c
One pound of Hallcraft Writing Paper and 50 envelopes (\$1 value)	79c
\$1 Box of Liggett's Chocolates	79c
50c Assorted Summer Candies	39c
5c Liggett's Chocolate Bars, 3 for	10c

*A great number of other savings, which you should come in and see to appreciate.*

**Robert W. Pease**  
Pharmacist

Opposite the Northwestern Passenger Station  
PHONE HIGHLAND PARK 144

FREE DELIVERY SERVICE

### AUTO WASHING

Due to the fact that we have the most modern power washer, we are in a position to wash your car quickly and efficiently for.....

**\$2**

WE WILL ALSO VACUUM CLEAN THE INSIDE OF YOUR CAR FOR ONLY \$1.

**SIMONIZING**

**\$10**

**J & L GARAGE**

PHONE HIGHLAND PARK 388  
125 North St. Johns Avenue

VOLUME XVI

NEW WA  
HE

Connected  
Week; Pr  
ture t



PHOTO

City's New  
Appea

On the cover of the Press is a picture of the architect's drawing of the Highland Park tank which will appear in the stone enclosure.

On this page the tank proper is shown. It is constructed of eight steel legs, each eight feet in diameter, extending from the bottom of the southeast corner within a short section of Green Street to the central avenue, in attention. This structure, towering above the ground, is so designed that it does not look like a monument.

Connect

On Tuesday a little formal dinner was held at what was headquarters for the city hall, which for a quarter of a century has been connected from the same time.

(Continued)

N. S. Gar

The next morning at the Shore Garden club, August 27, Charles A. Stone, Ellen Shipman and others participated in a talk on "Pla