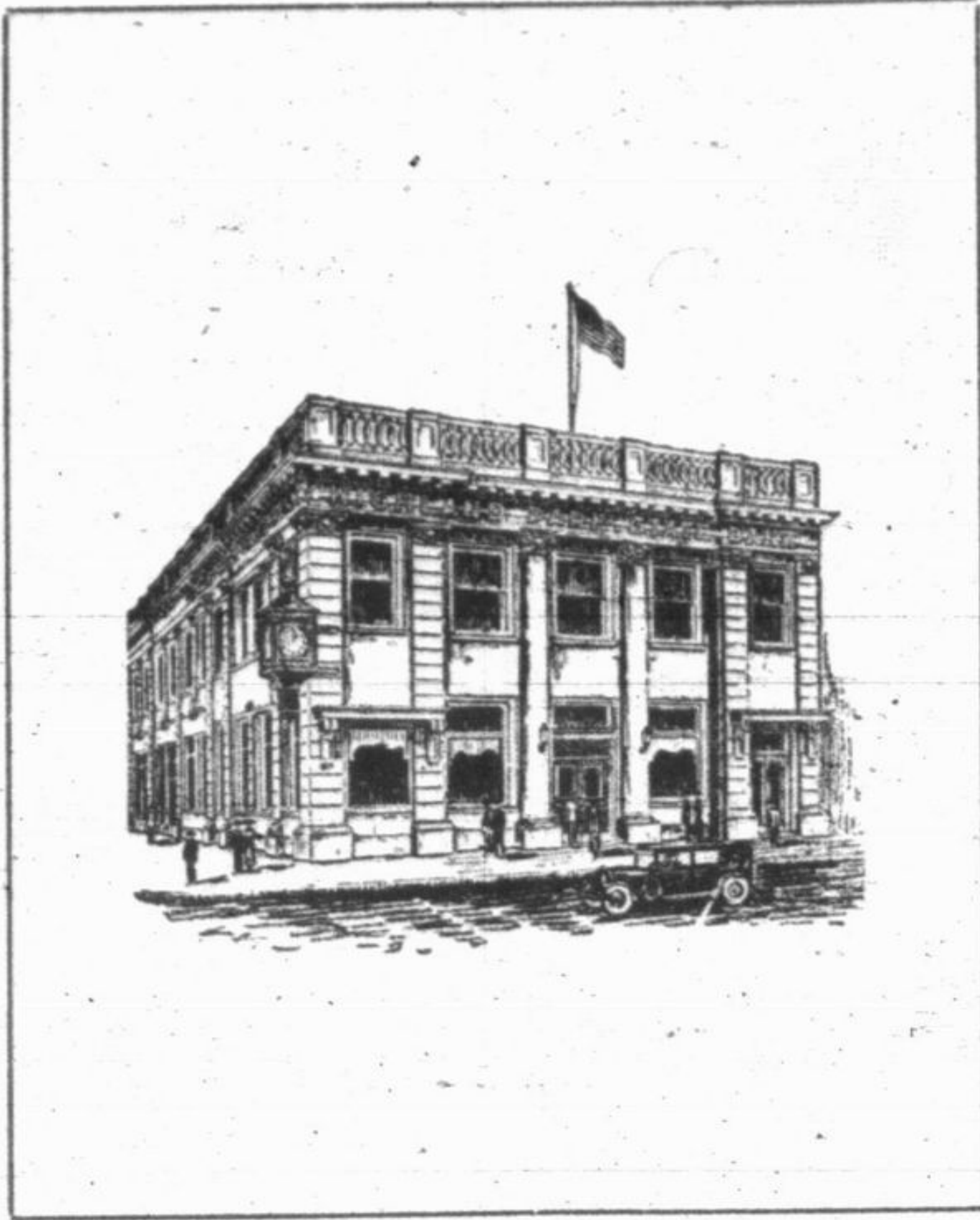


IT'S ALL OVER NOW!

Housecleaning at the Highland Park State Bank



Balances and turpentine—paint and “change a dollar”—
All have been combining to wilt a bankers’ collar;
Step-ladders and two-by-fours were scattered round the
lobby—

Until the State Bank looked as if painting were its hobby!
The bank seemed somewhat like a zoo—employees in their
cages,

And painters climbing all around—in panoramic stages.
A general upheaval week . . . but now the bank is ready
To welcome patrons new and old, with service true and
steady.

Please come and make our bank your own—admire its
classic beauty,

Respect its many faithful years, its honor and its duty.

—Alice W. Marks.

HIGHLAND PARK STATE BANK

The Home of Savings Depositors

DANGER LURKS IN THE AIR.

The increased travel of airplanes and air craft increases the danger to your home and property. Planes will continue to fall with the resultant damage to property of others. We are writing Air Craft Damage Insurance which will protect your home, buildings or contents from damage by air craft or airplanes or anything falling from them. The cost is low and the danger is increasing daily. \$1,000 worth of Air Craft Insurance is \$1.25 for three years, in which also is included limited damage by automobiles and trucks. It is well to bear in mind that should your home be seriously damaged by falling Air Craft and a fire should then follow your only protection would be an Air Craft Damage policy.

Write or phone for further information

TELEPHONE 574 OR 1046

Central Insurance Service

A. E. SMITH, J. P.

Room 3 State Bank Building Highland Park, Ill.

WE HAVE NOTHING TO SELL BUT INSURANCE

Battery and
Electric
Service.

MONROE SHOCK ABSORBERS
SCHEBLER CARBURETORS
PREST-O-LITE BATTERIES

Philco Radio

All-Electric Radio — brings
clearer tone, more stations and
greater distance.

MOTOR CAR ELECTRIC SERVICE

L. A. WAHL

C. R. McCLURE

515 Laurel Avenue

Phone Highland Park 266

ROBERT HEAD

New Presi Academ of Pr

At a rece
of Trustees
Robert J. T
dent. Mr.
Forest—a m
He has for s
ber of the
corporation.
Charles F.
Frank W.
gan T. Mc
other memb
tees are: F
Blossom, Jr.
B. Dick, Jr.
ton Mark,
Kersey Coa
ards, Fred
Swift, C. M
Wyman.

Mr. Thorr
icy as presi
be his ende
demy some
buildings, w
beautiful f
standpoint;
the campus
ment and st
Thorne is c
of improvin
cal equipm
standards
(Con

Lions Cl City

Several m
club attend
anston, Hul
ter and Hig
ton hotel.
today of th

The Lion
city council
East Park
able marke
Highland P
have either
or marker
of Highland
keeping wit
ings of the
have been
or suggesti
and it is h
ure some st
those enter
Sketches
sent in to
of the local

N
The Nor
hold its an
Lake Shore
next Satur
of flowers,
will be disp
vegetables.
The gen
charge of M
Mrs. Willia