

SCHOOL MODERN TYPE

Designed for Practical Education of Young Youth

like a country manufacturing educational institution, school at Pierce, Brownwood roads, High- comfortable warm buff trimmed, above a deep brown limestone. Al- large building, the third the size plan- ly, according to John architect.

ual Design an formerly was asso- k Lloyd Wright, and of design which char- hool is individual.

ght, airy structure, casement windows, kindergarten and the s who will gather in xt September will be y with cheerful, lime- fireplaces, but also modern arrangement

om is a laboratory rkroom adjoining the ; a cloakroom fitted es and compartments umbréllas, cupboards mpartment in which y keep the projects r she is working, and room for the teacher. h Clark G. Wright, ent calls the work- ith hot and cold run- with gas. Here the del in clay and build oats to their heart's

cheme Bright m is a greenish-gray s are a warm cream s the ceilings of halls are stained rafters htened with orange lighting fixtures are gn in wrought iron semiopaque cylinders glass for shades. In the lighting is indirect ckets. An automatic furnish warmth.

who worked with Mr. planning the school, inia's school system four-room red brick g forty students to housing well over 500 community lives up n as the home of sev- artists by the beauty nity buildings, Mr. out.

atest addition to Ra- in the fall, the school dded and flowers will the boxes which flank In another year or ne-story wing will be structure which will the upper grades.

METAL WORK

ART METAL CO., Inc. n. N. S. representative hwood Avenue hwood, Ill. Highland Park 1799

CULINARY HINTS



By NINA BREWER of Home Service Department of North Shore Gas Company

I have been having a number of re- quests for recipes for soups, so I am taking this opportunity to make out a little schedule for a few kinds of Cream Soups.

As in a number of different kinds of foods, I use a certain foundation to work from and carry out this idea in a general way, using different veg- etables for substance and flavor.

In this age we are getting away to quite an extent from the idea that we must have entirely different com- plete recipes for foods of the same kind. In some cases we do this, but I find the Foundation Recipe idea very helpful.

In making cream soups, I find it a helpful plan to begin with a thin cream sauce for a foundation and work from this to carry out the par- ticular kind of cream soup I wish to make.

To make this cream sauce, the standard measurements are one table- spoon butter and one tablespoon flour to each cup of liquid, with salt, pep- per, a tiny bit of grated or finely chopped onion and a dash of paprika, with whatever vegetable is to be used.

I am giving a recipe for cream of asparagus soup which will serve from four to six people, and this same recipe may be used for cream of corn, Cream of celery, cream of peas, cream of spinach, cream of carrot, cream of cauliflower or any other veg- etable you wish to use. For cream of tomato I use a slightly different me- thod, on account of the acid.

In making any of these soups from the following recipe, use enough of the vegetable to make one cup of the pulp or of the vegetable chopped fine and two cups of the water in

which the vegetable is cooked. Use either fresh or canned vegetables.

Cream of Asparagus Soup
4 tablespoons butter
4 tablespoons flour
2 cups asparagus water
2 cups milk
1 teaspoon grated or chopped onion
1 to 1½ teaspoons salt (to taste)
Little pepper and paprika.
1 cup asparagus pulp.
Melt butter in double boiler, add flour and stir until smooth, gradually adding the cold milk, then the season- ings and asparagus water and pulp, stirring often to keep it smooth. Cook 15 to 20 minutes. Serve with small crisped crackers or wafers or with Croutons made by trimming crusts from thin slices of bread, cutting the slices in small, even pieces and browning delicately in the oven or frying quickly in deep fat. Place a

little whipped cream on each dish of soup, if you like, with just a hint of paprika on the cream.

Fire Alarm Calls Meeting

Recently in Ware, Mass., an insuf- ficient number of voters responded to a call for a town meeting. And so the chemical fire truck, with siren

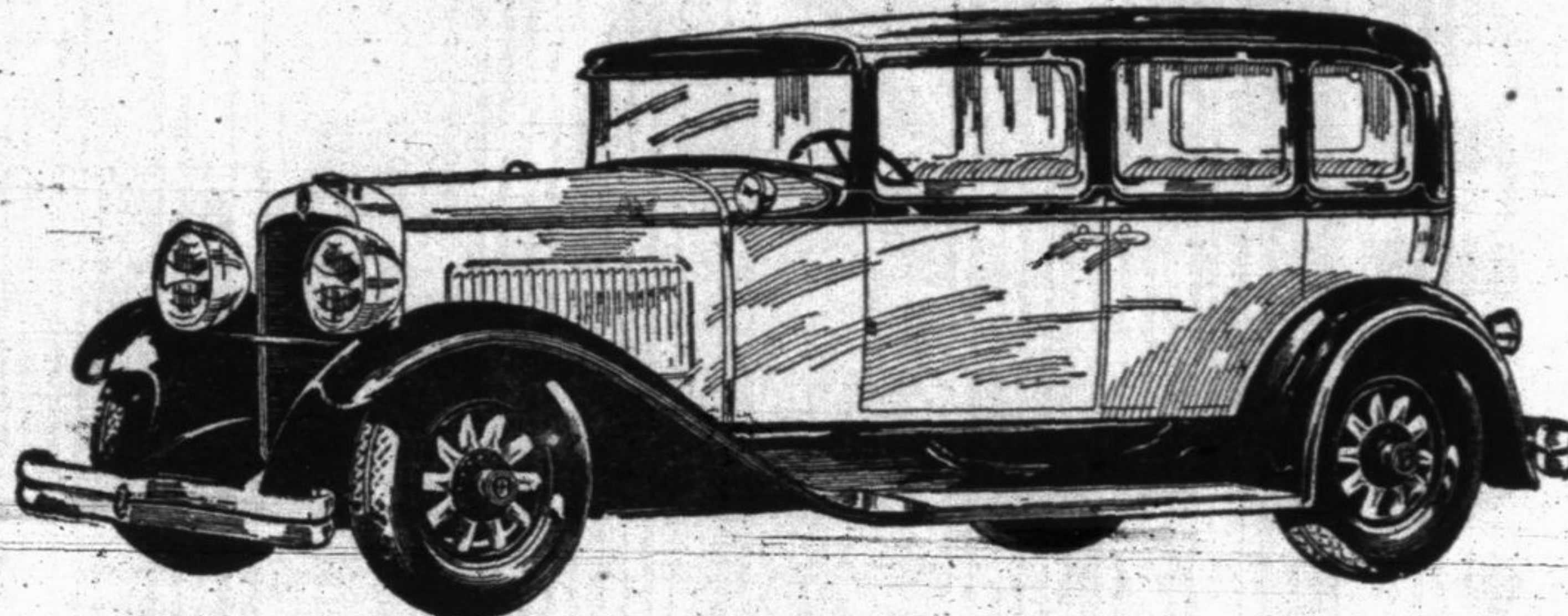
shrieking, was sent speeding down Main street. When the truck reached the town hall, followed by a crowd, the meeting was held.

There are millions of people who are constantly taking \$10.00 worth of time to study out how they can perhaps make \$5.00 in the stock mar- ket.

MURPHY & SCHWALL
HEATING CONTRACTORS
Hot Water, Vapor, High or Low Pressure Steam
Estimates on New and Remodeling Work - Repair Work a Specialty
733 GLENCOE AVENUE Telephone Highland Park 2637
M. D. MURPHY
89 CLIFTON AVENUE Telephone Highland Park 2283
J. A. SCHWALL

NASH '400'

Leads the World in Motor Car Value



The Greatest Car in the \$900 Field COMPARISON PROVES IT!

NASH engineers have created the greatest motor car ever built in the \$900 field.

Its features prove it. Just examine all the outstanding costly-car attractions this car offers.

Its performance proves it. Drive it and experience the great flow of smooth power from its big, high-compression, 7-bearing motor, the lightning-like get-away, the world's easiest steering.

Its size proves it. Big, comfortable, and with extra head and leg room for all 5 passengers. Finished with the lux-

ury and tastefulness usually exclusive to expensive cars.

Its beauty proves it. For the "400" body design is the style leader—beautiful beyond comparison in its field.

Its equipment proves it. There's no extra charge for front and rear bumpers, Lovejoy hydraulic shock absorbers outboard mounted, spare tire lock and tire cover.

And its value proves it. Just compare the delivered, fully equipped prices of other cars with the low Nash deliv- ered, fully equipped prices.

Price Range (f. o. b. factory) of 23 Nash "400" Models, \$885 to \$2190 including Touring, Roadster, Coupe, Cabriolet, Victoria and Sedan Models

Highland Park Nash Sales

Sheridan Road — In the New Post Office Bldg. — Highland Park, Ill. TELEPHONE HIGHLAND PARK 1608

SEWING MACHINES

SOLD AND REPAIRED Some real values in rebuilt machines from Six Dollars and up

A. H. MUHLKE SINGER AGENCY Deerfield, Ill. Tel. Deerfield 363

Windes & Marsh

Illinois Competent Surveyors Municipal Engineers

Phones Highland Park 650 Winnetka 222