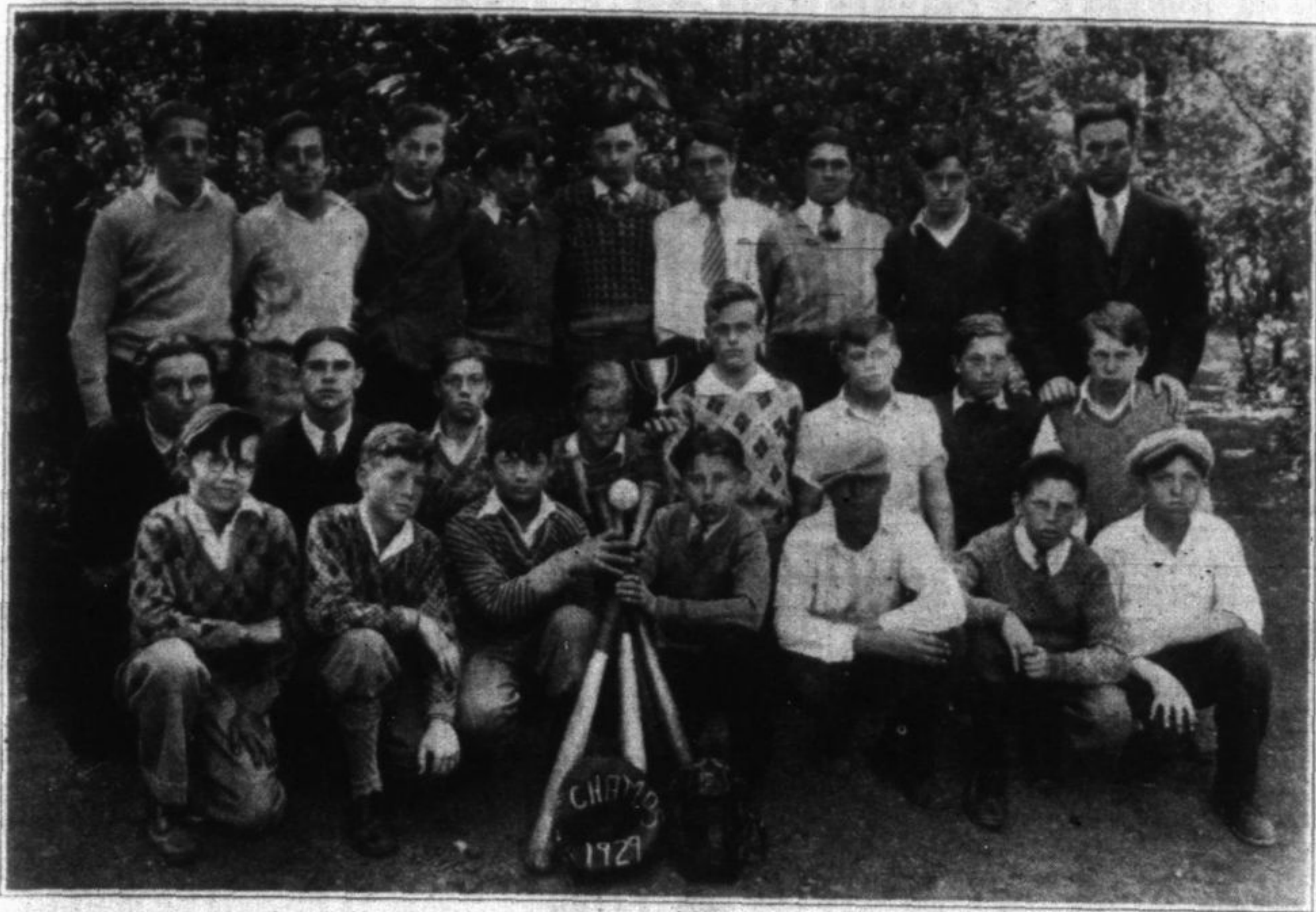


ELM PLACE ATHLETES



CHAMPIONSHIP GAME  
WON FROM OAK TERRACE

The batting order for Elm Place, and Oak Terrace was as follows:

Elm Place	Oak Terrace
Dixon 1st b.	Lenzi, ss
Skidmore, 3b	Belingeri, lf
Loomis, cf	Ghini, c
Dalla Valle, p	Nordini, p
Greenwald, c	Sheldon, 1st b
Noerenberg, sb	Belmonti, 2nd b
Croke, lf	Molinari, cf
Swan, rf	Fini, 3rd b
Coates, ss	Pierantoni, 1st b

Elm Place had ins and Oak Terrace had outs: The first man up for Elm Place was Dixon who hit a single past 1st base. The next man up was Skidmore who was called out on strikes. Loomis hit to the short stop of Oak Terrace who tagged second base putting Dixon out and then threw Loomis out at first making three outs for Elm Place.

Oak Terrace's first man was Lenzi the shortstop, who struck out. The next man up was Belingeri who flied to Loomis out in center field. Ghini came to bat and hit a single between the pitcher and the third baseman Dalla Valle walked Nordini putting a man on first and second. Sheldon, next man up, grounded to Dixon for the third out, for the end of the first inning.

At the beginning of the second inning Dalla Valle struck out. Greenwald next at bat was safe at first on a passed ball, when the catcher of Oak Terrace missed the ball on the third strike. Noerenberg next man up hit a single through the shortstop sending Greenwald to second. Croke flied to Sheldon, then Greenwald ran from second to home when Swan was at bat. The catcher missed the ball, but Oak Terrace's pitcher ran in to home plate, caught the ball thrown by the catcher, and put Greenwald out at home making the third out for Elm Place.

Belmonti, first man up for Oak Terrace, flied to Skidmore. Molinari singled past second base. Fini next man up flied to Croke. Pierantoni was called out on strikes making the third out, and ending the second inning.

Swan started the first of the third inning by a single past shortstop. Coates flied to the third baseman. Dixon hit a single sending Swan to center field with Swan on third who

tried to run in after the ball was caught but was put out at home which made the third out.

Lenzi starting off for Oak Terrace, struck out. Belingeri singled. Ghini next up struck out. Nordini singled sending Belingeri to second. Sheldon hit to Dixon making the third out at the end of the third inning.

Loomis started the fourth inning by making an out at first. Dalla Valle struck out. Greenwald hit the ball to left field for a home run and for the first run of the game. Ghini caught a foul fly hit by Noerenberg back of homeplate for the third out in the first of the fourth inning. Belmonti hit to Skidmore, and Skidmore threw him out at first. The next man up, hit a short fly to Skidmore who caught it. The next man up got a single, Pierantoni hit to Elm Place's first baseman who easily ran to the bag and put him out, for the third out and the last of the fourth inning.

Croke, Elm Place's first man up, got on base when the catcher missed the ball. Swan and Coates both struck out; Dixon hit but was put out at first for the third out.

Lenzi of Oak Terrace got a single, Belingeri got a single by an error of Coates putting a man on second and a man on first and no outs. The next man up was Oak Terrace's catcher who struck out. Nordini got a single, and the man on second tried to run home but was put out by Greenwald at home. Sheldon, the next man up, flied to Coates making the third out, and the last of the fifth inning.

Skidmore started the sixth inning with a walk. Loomis flied to Lenzi who missed it and Loomis got a double, sending Skidmore to third. Dalla Valle next up hit to short sending Skidmore in and Loomis to third. Greenwald struck out, but was safe at first when the catcher missed it. Noerenberg singled with bases loaded, bringing Loomis in. Croke hit a single bringing in Dalla Valle. Swan singled bringing Greenwald in. Coates struck out. Dixon singled bringing Noerenberg in. Skidmore singled, but Croke was caught stealing home. Loomis then flied to Fini Oak Terrace's third baseman for the third out ending the sixth inning rally for Elm Place.

Belmonti hit a short fly to Dalla Valle. Molinari hit to Skidmore, and

was safe at first. The next man up struck out. Pierantoni was put out at first ending the sixth inning.

Dalla Valle was the first man up for Elm Place. He got a hit but was put out at first. Greenwald followed, and he got on base. Noerenberg struck out. Croke hit and brought Greenwald from second to home, for the seventh run of the game.

Swan hit but Croke was put out

at second by Oak Terrace's shortstop for the third out.

Lenzi hit to Dixon and was put out at first, Belingeri, Oak Terrace's left fielder, hit a three bagger; Ghini walked, Nordini flied to Coates the Elm Place shortstop. Sheldon hit to Skidmore who threw him out at first for the third out. Elm Place won the championship, the final score was: Elm Place 7, and Oak Terrace 0.

—By Geo. Ralph, Clifton Franklin.

26½c  
25½c  
18½c

ACTIVE BEEF  
PORTERHOUSE  
STEAK, the lb.  
59¢

.....18c  
ed, lb...42c  
.....55c  
.....39½c  
.....27c

98c

TEW, lb...35c  
ST, the lb..43c  
ER, lb...22c  
e lb....39½c  
the lb...39c  
TEW, lb...28c

E FRUIT  
ize, 6 for \$1  
for \$1  
13 for \$1  
for 25c

.....45c  
.....60c  
.....25c

e your

69c

Park, Illinois

THIS WEEK'S SPECIAL  
BRICK —

Full  
Quart  
Brick

Macaroon  
Bisque,  
Strawberry  
Sherbet  
and  
Vanilla



There is a  
HYDROX Agency Near Your Home

Facts

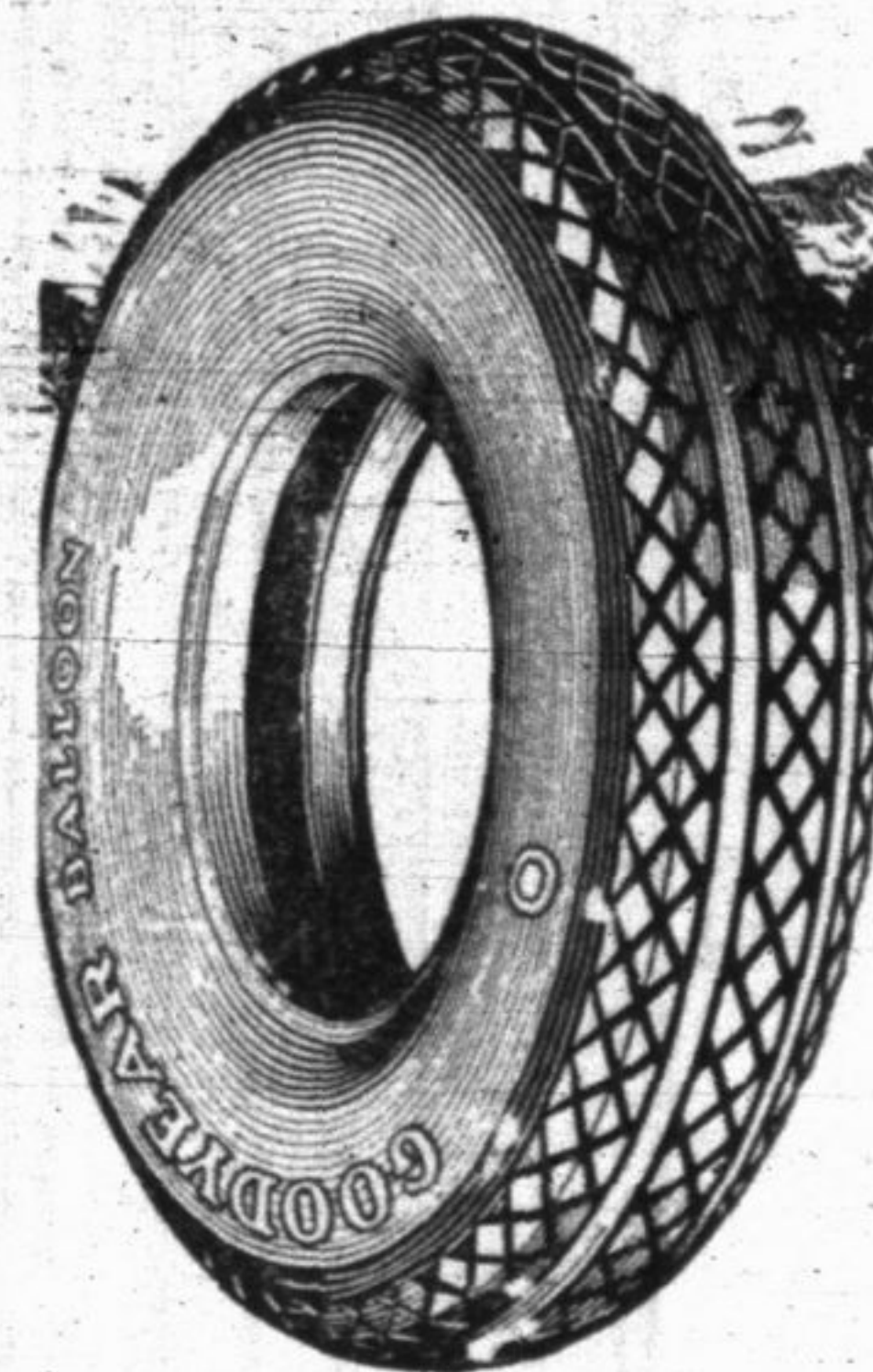
speak louder  
than

Claims

1928 was not only the greatest year in Goodyear sales — IT WAS THE THIRTEENTH SUCCESSIVE YEAR IN WHICH MORE PEOPLE RODE ON GOODYEAR TIRES THAN ON ANY OTHER KIND!

Sometimes you see a company come to the front for a year or so, but it doesn't hold its lead. So, when you see a company rise to leadership in tire sales as Goodyear did in 1915 — AND THEN HOLD AND INCREASE THAT LEADERSHIP EVERY YEAR THEREAFTER— You know that they're good!

Isn't that evidence enough to show you why we have picked Goodyear Tires and why you get the best buy of your life when you put them on?



See the New 1929  
Goodyears here!

DOUBLE EAGLES

HEAVY DUTY  
ALL-WEATHERS

REGULAR  
ALL-WEATHERS  
PATHFINDERS

GOODYEAR

THE WORLD'S GREATEST TIRES

Haak's Auto Supply Co.

25 South Second St.

Phone Highland Park 391