

ING CONTRACT
T NO. 327
MPROVEMENTS OF
LAND PARK.
GIVEN that bids will
struction of a rein-
ent in the Alley in
n of Highland Park,
tended of Laurel Ave-
of the existing pave-
y, Illinois, as a whole
ordinance therefor.
eived by the Board of
its office in the City
linois, until 7:45 P. M.
June, 1929, at which
will be publicly opened

d blank proposals will
office of the Board of
the City Hall of said

be paid in bonds, which
est at the rate of six

for the contract

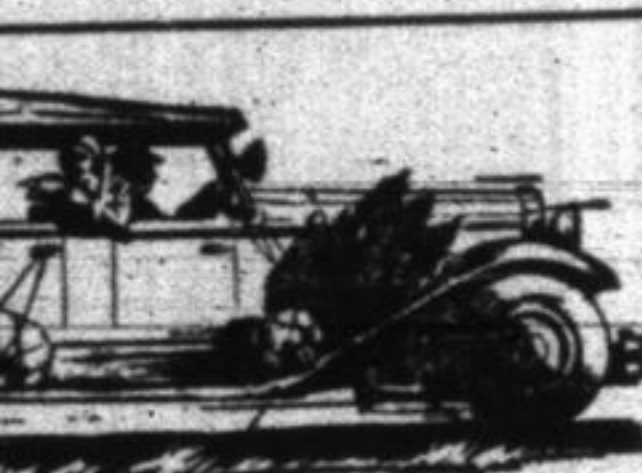
to one-third of the
bid with sufficient
resident of the Board
when entering into the
ruction of said improve-

ls must be accompanied
payable to the President
al Improvements of the
rk for the sum of not
er cent of the aggregate

st be delivered to the
ard of Local Improve-
of said Board at the
herein for the opening

l will be considered un-
check herein provided.
l Improvements reserves
any or all bids if they
public good.

JENJAMIN F. LEWIS,
WM. J. BROWN,
YLE GOURLEY,
V. M. REAY,
H. ZIMMER,
rovements of the City of
12-13



a Cordial
tation to
t Our
nursery

trip to our nursery
see much to inter-
d perhaps you will
gestion as to just
hings you need to
grounds more beau-
ruitful.

and see the fine,
ardy fruit and orna-
ees, the beautiful
es, flowers and other
hings. You'll enjoy
ate of your visit.

les Fiore
nurseries
pecialists in



CAPE GARDENING
Ave., Highwood, Ill.
Highland Park 523



Home Beautifying and Landscape Suggestions



Producing Specimen Plants

In order that your plants may be prize winners it does not necessarily mean that you should have to follow any set rule in the care and making of a garden. But it is essential, however, that moisture, heat and air are properly distributed in addition to the proper combination of fertilizer. In order that the moisture be properly handled it is necessary that one know and understand the capillary movement of water in the soil, as it is harmful to overwater as well as not a sufficient amount. Heat in the soil is the hardest of the three essentials to control. It is equally as hard to understand. For instance, it requires about ten times the amount of heat to evaporate moisture from the soil as it does to merely warm it up to the proper temperature. Therefore, to retain moisture in the soil and run off the surplus through an under drainage system of tiling is the only way to assure yourself of a warm soil.

It is the rainfalls of the early Spring that take the frost out of the ground and aid a great deal in warming the soil to a temperature of about fifty degrees. But after that temperature has been reached then the sun plays a great part for the balance of the season. It is a mistake, however, to create too much heat in the soil, as when the soil reaches a temperature of one hundred and thirteen, it retards the plants equal to

a temperature of forty. Therefore, on black soil for summer heat which is exposed direct to the sun it is just as essential to have a heavy dust mulch of at least an inch to an inch and one-half for protection from the heat as it is for the prevention of evaporation from the soil.

As in the soil is just as essential to have a heavy dust mulch of at least an inch to an inch and one-half for protection from the heat as it is for the prevention of evaporation from the soil.

Stagnant soil where the circulation of air is poor, becomes filled with poisonous gases and lacking in free Nitrogen from the air. It is hard to explain and there is little written on soil breathing but there is no question but what expansion and contraction by the heating and cooling of both the moisture and air in the soil have a great part to play with the function of soil breathing. It has been recognized by greenhouse men for years that plants used on benches where the soil is only six to eight inches deep and the heavy poisonous gases have a chance to drain out through the bottom of the benches, are much superior to the same plants planted on solid benches under similar conditions. This no doubt explains the reason why surface cultivation has swept the country by storm during the last fifteen years through the corn belt. While it is recognized that surface cultivation prevents the destruction of roots which grow close to the surface, there is no question in the writer's mind

that it is the free nitrogen from the air which helps to stimulate the vigorous growth of bacteria in the soil, which changes the various plant foods to a form whereby they are available to plant life, has much to do with their success.

Fertilizers. There are certain forms of fertilizers should be used which carry little or no lime when you wish to create such conditions. On the other hand where you have plants that thrive best in a sweet soil you should use plant foods which carry a liberal amount of lime or use lime in addition to your fertilizers. Fertilizers may be divided in three classes,

nitrogen, foliage producing, phosphorous flower producing and potash root producing. While there are a total of fifteen elements of fertilizer that are essential to plant life the balance of them are as a rule sufficient in most soils and little or no attention need be given them.

Black Dirt
Delivered
\$3
PER YARD
PHONE GLENCOE 1244
Prompt Service
L. Brown

We Have a Very Special Strain of Rosy Morn Petunias

Geraniums	Pansies
Cannas	Zinnias
Salvias	Begonias
Fuchsias	Snapdragons
Pentunias	Aster plants
Verbenas	Hanging Vines

Also a Variety of Other Bedding and Vegetable Plants

In Deerfield—West of tracks—South end of street

DEERFIELD NURSERIES
Kottrasch Bros.
Phone Deerfield 5

Have You Seen or Heard of

FRANKEN'S PANSIES

It is likely the largest field of pansies in the state—about six miles of pansies

LARGE FLATS, only 75c

Come and see them now. Also place your fall orders for tulips at once, as orders placed now will be filled direct from Holland to you.