

A New York woman of some means left her husband just thirty-seven cents in her will. It would be interesting to know just how she arrived at the exact figure.

**REFRIGERATORS**  
for  
Ice or Mechanical Refrigeration  
Jewett - Leonard - Seeger  
**THOMAS BIGFORD**  
Refrigeration Specialist  
Phone L. F. 908

**EW. RADIO PROGRAM FOR CHILDREN**

A new and interesting radio program, called "My Bookhouse Storytime," is now being offered over WMAQ at 5:45 p. m. every Monday, Tuesday, Wednesday, Thursday and Friday. It is a program full of good stories and fun for the children—with an important secret! Adv.

**LET "FREDDIE FROG" KEEP YOUR GARDEN POOL FILLED**  
BRIGHTLY LACQUERED  
CAST ALUMINUM



THE TRIGGS MFG. CO., HUNTINGTON, IND.

**PLAN HOSPITAL FOR TREATMENT OF FEET**

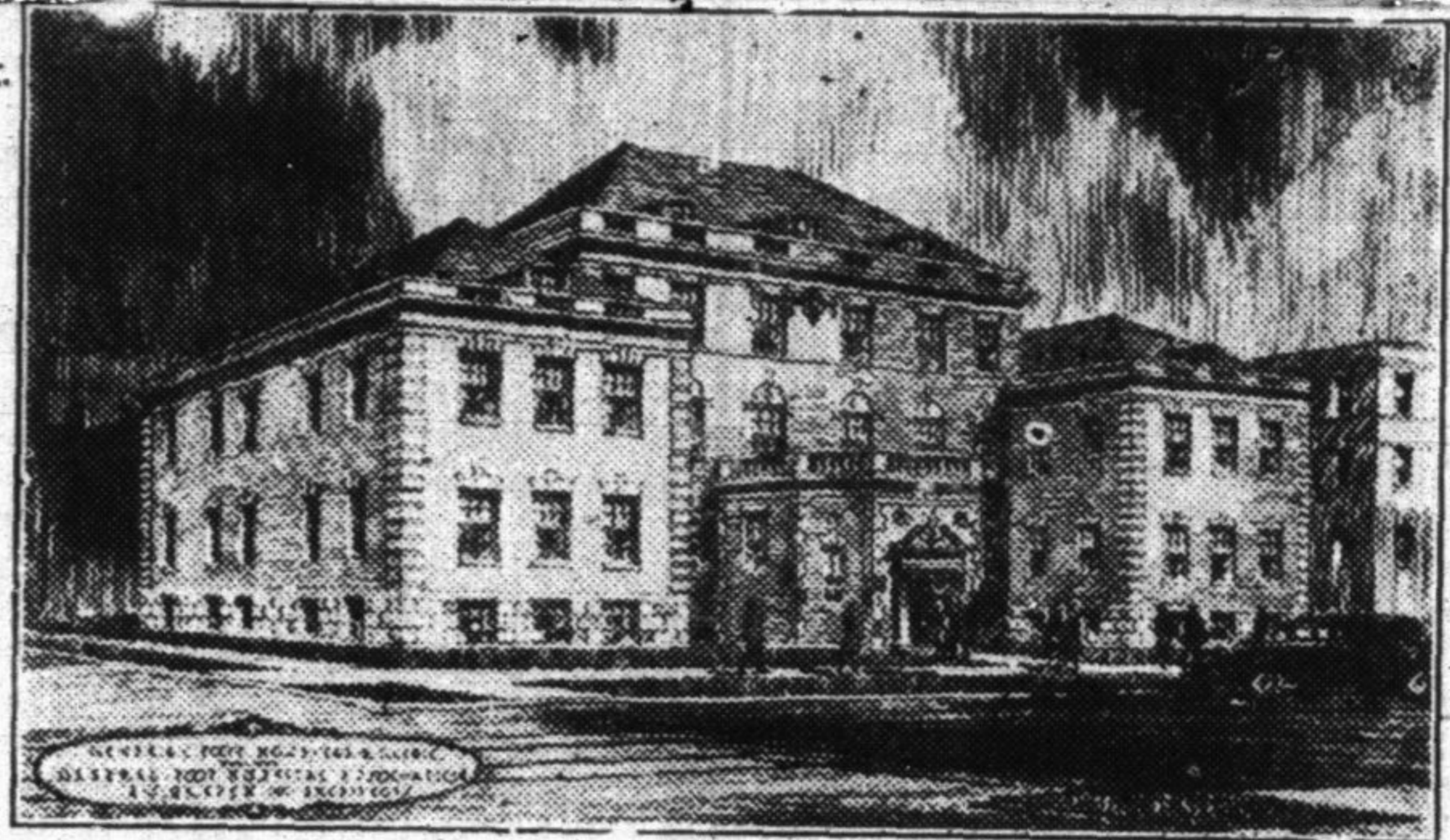
**Extensive Project Started in Chicago to Provide Boon for Sufferers**

Relief for the army of foot sufferers in Chicago and vicinity is held out in the announcement of a \$400,000 project for the erection here of a general foot hospital. This will be the first hospital of its kind in America and will be modeled after similar establishments in London, Nottingham, Liverpool, and Edinburgh, which have been made.

tary, and H. A. Luse, treasurer. In undertaking to build and maintain a hospital devoted primarily to the treatment of foot cases, the foot specialists are joining hands with the medical fraternity. Already listed on the staff are Dr. A. P. Heineck, surgeon; Dr. T. J. Echerer, physician; Dr. H. A. Renz, dermatologist; Dr. Roy E. Christie, specialist in children's diseases; Dr. W. H. Gilmore, roentgenologist; Dr. C. A. Field, dentist; Dr. Maurice Bernstein, orthopedic surgeon, and a group of leading foot specialists.

**Campaign Committee**

A campaign committee under the direction of Harry G. Hoak, with headquarters in the Palmer House, has organized a campaign.



Plans prepared by A. S. Graven, architect, call for a four-and-a-half story building, Georgian in design, of brick construction with Bedford stone facings. The hospital will consist of three units, a central hall flanked by wings on either side, thus admitting daylight from every angle. Three sites are under consideration, but no definite selection has as yet been made.

**500 Patients a Day**

The foot clinic alone will have facilities for handling 500 patients a day. There will be a surgical clinic for more serious foot cases, and two operating rooms. The hospital also will conduct a dental clinic, as foot ailments often are traceable to defective teeth.

The enterprise is sponsored by the General Foot Hospital Association, Inc., of which Dr. Frank Furch is chairman; Dr. O. N. Woolman, secre-

necessary funds, and is making its appeal to public-spirited Chicagoans.

Emphasizing the need of such an institution, Dr. Woolman pointed out the fact that at least 1,000,000 people in Chicago are afflicted with foot ailments to a greater or less degree. The general hospitals, he said, offer no facilities for the relief of such cases, while at one small clinic conducted by a charitable organization, hundreds of sufferers are turned away yearly, unable to receive even first aid.

**One in Seven**

"One out of every seven Americans," said Dr. Woolman, "is afflicted with flat feet, a disability which ranked second to tuberculosis as a cause for rejection during the world war. Many nervous diseases and organic troubles may be traced to defective feet which are costing the United States annually \$100,000,000 in economic waste."



**Thrifty Coal Users Are Placing Their Orders Now**

The wise man buys his coal during the summer months when prices are lowest, deliveries clean and the fuel is of the best quality—clean and dry.

You will make a worth-while saving in your heating costs next winter by letting us fill your bin now with Consumers Guaranteed Coal or Coke.



"Every ton must satisfy or we remove it and refund your money."

Let us quote our reduced summer prices.

Phone Highland Park 2800

**Consumers Company**

COAL - COKE - ICE - BUILDING MATERIAL

BUY YOUR COAL ON APPROVAL

**What**  
high-speed interurban railroad serving this community gives direct access to scores of golf courses, forest preserves and attraction centers in the delightful Lake County countryside and Illinois-Wisconsin

**?**

ANSWERS ON PAGE 40