

GENERAL MOTORS SPRING SHOWING



See the NEW CHEVROLET SIX

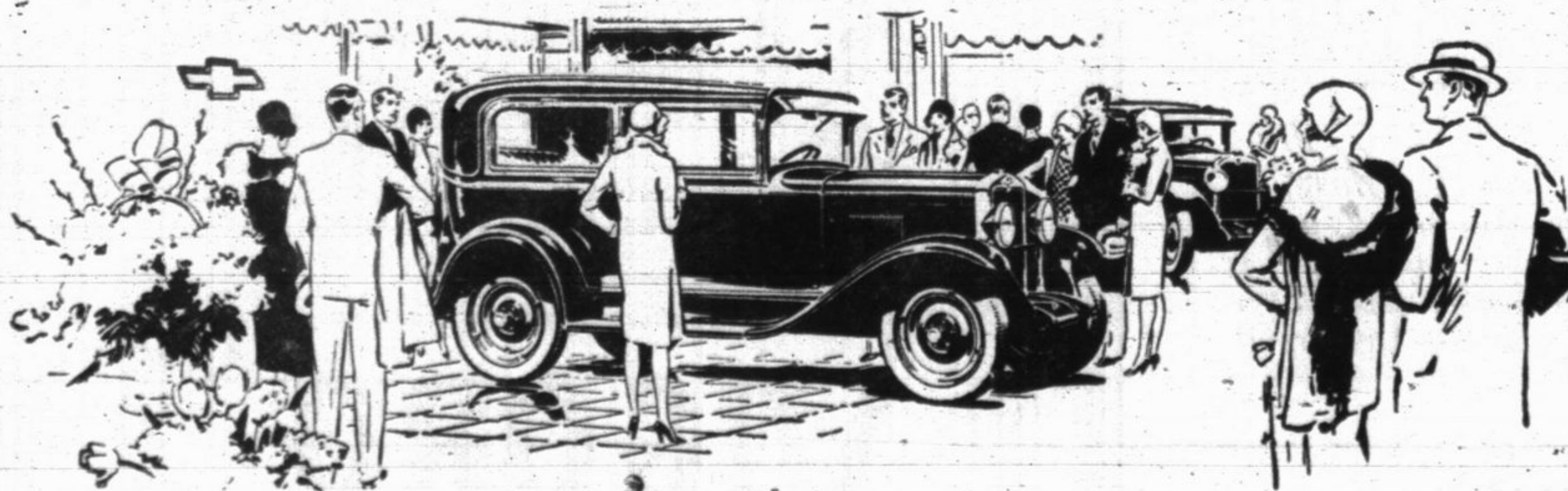
—a Six in the price range of the four!

You are cordially invited to visit our special display of the new Chevrolet Six—arranged in conjunction with the great nationwide Spring Showing of General Motors cars.

Here, in a price class that has hitherto been occupied exclusively by four-cylinder automobiles, you will see displayed a line of beautiful models that bring you every advantage of six-cylinder performance. Yet, due to its

great array of mechanical advancements, the Chevrolet Six delivers *better than twenty miles to the gallon of gasoline* with extremely low oil consumption.

And this amazing six-cylinder performance is matched in impressiveness by the beautiful new Fisher bodies. Come in any time this week. See for yourself that no other car in the world can give you so much at prices within the reach of all.



The \$ 595
COACH

- The Roadster..... \$525
- The Phaeton..... \$525
- The Coupe..... \$595
- The Sedan..... \$675
- The Sport Cabriolet..... \$695
- The Convertible Landau..... \$725
- The Sedan Delivery... \$595
- Light Delivery Chassis..... \$400
- 1 1/2 Ton Chassis..... \$545
- 1 1/2 Ton Chassis With Cab..... \$650

All prices f. o. b. factory
Flint, Michigan

COMPARE the delivered price as well as the list price in considering automobile values. Chevrolet's delivered prices include only reasonable charges for delivery and financing.

You Are Cordially Invited to See Our Special Exhibit of the New Chevrolet Six

WM. RUEHL & CO.

120 North First Street

Phone 1110

Q U A L I T Y A T L O W C O S T