

### CONSIDER THE MAN BEHIND, IS ADVICE

GIVEN BY MOTOR EXPERT

**Drivers of Cars Urged to Remember There is Always Somebody Following; Has Rights**

Suddenly, after a wretched detour, to come upon a beautiful stretch of newly-constructed highway is the tourist's idea of a grand-and-glorious feeling, says H. Clifford Brokaw, technical adviser, New York City West Side Y. M. C. A. automobile school. Such roads are a boon to all drivers of motor vehicles. They should be appreciated by such drivers and the result should be more generally satisfactory motoring conditions all around. But this is not always the case.

Frequently I have the opportunity to travel over a stretch of improved highway that has recently been completed. It is a remarkable piece of engineering work, providing a practically perfect road. Steep grades that formerly were an annoyance in these parts have been largely eliminated. Several rather dangerous sharp corners have also been done away within the process of this new construction. The road has been widened so that four machines can readily travel abreast.

**Strange Features**  
The strange thing about this situation is the fact that more serious accidents have happened over this stretch since it was improved than occurred all of last year when conditions were not nearly so favorable to safety. Is there not perhaps a tendency for drivers to lessen their caution in somewhat the same ratio as the danger element of the route appears to be eliminated or at least diminished?

It has been noticeable that when drivers strike this particularly excellent section of highway, they at once speed up. This is quite natural and not undesirable if the increased speed is kept within the bounds of good judgment. This, however, is not always the case, especially when it has been raining and there are dangers from skidding.

Drivers, thinking they can surely get by the car ahead on such a wide road, tend to take unreasonable chances along these lines. The result is that some who find their path blocked also find their rate of speed so high that it is difficult to control the action of the car as much as may be necessary. This situation grows out of an irritating habit some drivers have, especially those who are out primarily for getting the air, of moving along slowly and at the same time keeping to the left.

**Causes Disadvantage**  
This situation puts the driver of a following car to an unnecessary disadvantage. If such a driver wishes to pass, as he is very likely to do, he must either pass on the right of the slowly ambling vehicle or on the left. If he tries the former method he is violating traffic regulations and at the same time stands a chance of being squeezed if the driver ahead should take a notion to suddenly shift to the right, as he is apt to do.

If the driver of the following machine tries the plan of passing on the left, he is then forced to get into the legitimate territory of cars coming in the opposite direction. If an accident happened while so doing he would have little, if any, legal help on his side. Consequently, if he attempts to pass on the left, which is the normal way to pass, he may find himself traveling into a very dangerous situation. The only thing left to do is to follow along behind at a slow pace and add one more car to the troubles of those who are next in line. It should be said in regard to this "middle-of-the-road" driving that operators of trucks appear, as a rule, to keep to the right and have more consideration of other drivers than more folks at the wheels of pleasure cars.

### INTERESTING FACTS ABOUT THIS STATE

Illinois leads the United States in the manufacture of lipsticks.

Of the total area of the city of Chicago, 30 per cent—streets, parks, etc.—is the property of the city, state or national governments.

The grand champion Holstein bull of the National Dairy show, recently held at Memphis, Tennessee, is owned by the Elmwood farm of Deerfield, Illinois.

What is believed to be the tallest corn stalk grown in the United States was produced on the Bridgeford farm at Joy, Illinois. It stands 17 feet six inches high.

National and state income tax receipts from Illinois corporations for year ending June, 1927, amounted to \$120,000,000. The corporations of only two other states paid larger amounts.

Central station generating plants of Illinois produced 574,507,000 kilowatt-hours of electricity during the month of August, 1928, and ranked fourth among the states in total output.

### GET-RICH-QUICK FAKES NUMEROUS IN THE U.S.

Something for Nothing Still  
Bait That Catches Many  
Suckers

The get rich quick faker in the United States, offering people something for nothing, still is popular, and with many is given a warmer reception than the man with a solid and reliable business proposition.

Recounting numerous schemes that still are offered to the American public with the promise of great wealth a leading chemist, in The American Magazine, declares that every scientific discovery of consequence is followed by schemes and inventions of no merit, for all of which money is sought. It seems to be a curious trait in human nature, this scientist declares, that schemes proposed by ignorant men or those without special knowledge are believed more readily

than the hard facts of a scientist who has studied the problem for years. This, it is supposed, is because the uninformed salesmen of ideas leap over all obstacles and arrive at a result pleasing to everyone.

Among get-rich-quick schemes that have survived the test of time in the United States and which still net the schemers large sums of money are the one offering divining rods to discover water; radio-active water jars to "charge" water with healing properties; rait makers; schemes to refine ore; transmutation of metals.

Investors are urged to cultivate a questioning attitude when considering such schemes, to consult experts and also to demand proof.

### ADVICE ON SILENCE

In a country of such diversified people, with such diversified ideals—said an American statesman—the only safe thing is to say absolutely nothing.—Woman's Home Companion.

### PENNSYLVANIA HAS SURPLUS OF DEER

OPEN SEASON DECLARED

Plan for Game Propagation in  
That State Is Believed  
Cause of Rapid In-  
crease There

One of the most unusual situations ever known in relation to big game has developed in Pennsylvania, where the board of game commissioners has found it necessary to declare an open season for the shooting of female deer. That such a condition could develop in an eastern—or for that matter, any—state in modern times, is a thing which is hard to compre-

hend by sportsmen of almost any section of the country excepting the Keystone commonwealth.

Further cause for amazement is found in the official announcement that the older does are so plentiful that they have depleted the natural food supply to such an extent that thousands of young deer are literally starving to death and that game wardens in several counties report seeing many famished animals and frequently, the carcasses of deer which have died of hunger.

According to game authorities, the adult deer have denuded trees and bushes, upon which the animals feed, to a height which places the food above the reach of fawns, whose numbers have increased too rapidly because of the vast number of parent stock.

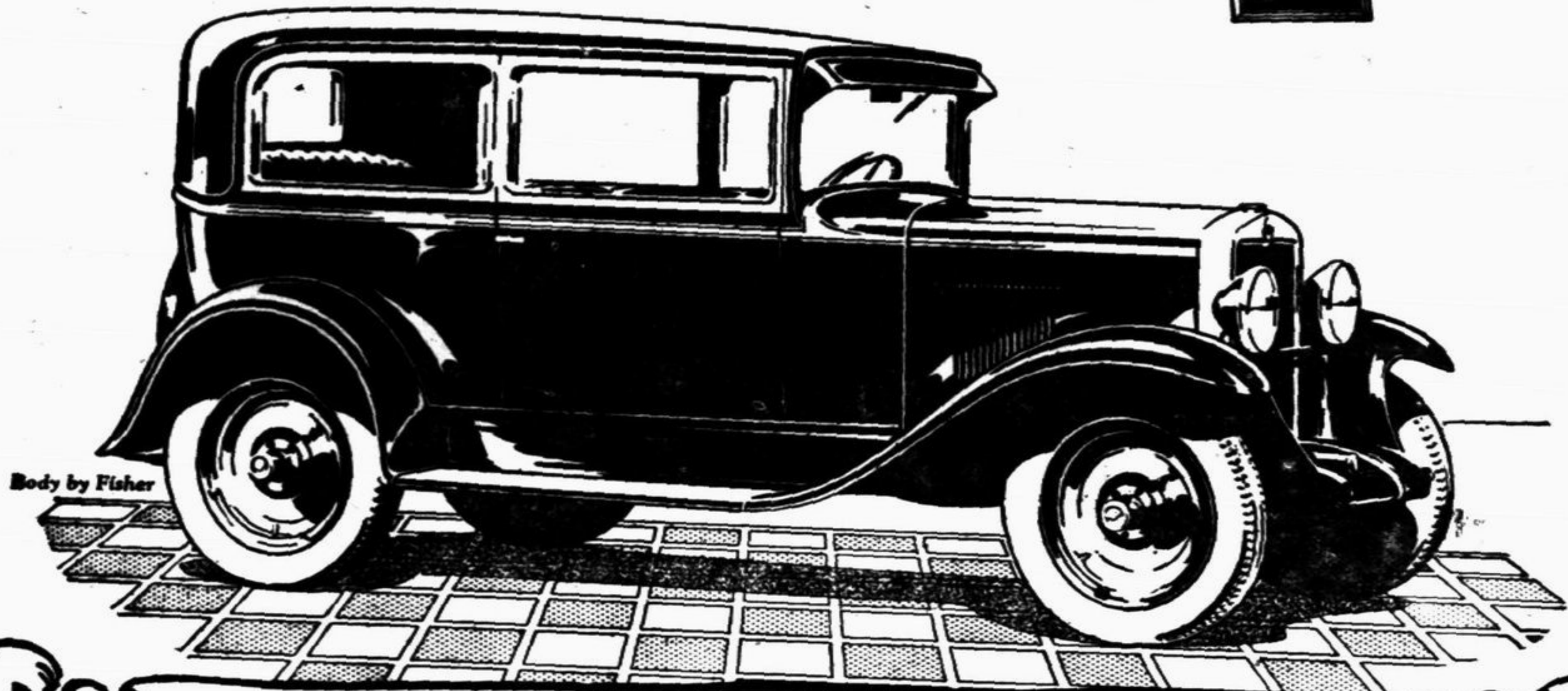
The superabundance of deer is pointed to by Pennsylvania officials and the sportsmen of the state in substantiation of the claim that by

following the "Pennsylvania plan" and community may have all the game it needs, provided that conditions are right for natural propagation and stocking, supplemented by sane game laws, aimed to permit shooting but with the necessary safeguards against abuse of reasonable bag limits and open seasons.

### GOLD MONOGRAMS ON SILVER, NEW

A new process has just been developed in the marking of sterling silver, making possible distinctive monograms of gold inlay. The simplicity in design which this permits has a particular appeal to people who care for the finest, most delicate lettering on their plain patterned sterling. It is free from any semblance of ostentation or show. Single letters or monograms are treated equally well in this process.

For Economical Transportation



# The Outstanding Chevrolet of Chevrolet History

- with Marvelous New Bodies by Fisher!

Only a short time has elapsed since The Outstanding Chevrolet was introduced—but already it has swept on to one of the greatest triumphs in automotive history. Never before has the American public so overwhelmingly endorsed a new Chevrolet—for never before has there been provided, at prices within the reach of everyone, such a generous measure of beauty, comfort, performance and dependability!

### New Fisher Bodies

The marvelous new bodies by Fisher—longer, lower and roomier, with all closed models equipped with adjustable driver's seat that may be moved forward and back for proper driving comfort—represent one of the most valuable contributions ever made to motor car comfort and beauty. The hood streams back from the voguish new chromium plated radiator in straight, unbroken lines and blends flawlessly into the body contours. Body mouldings divide at the cowl line—giving a paneled effect to the cowl and

hood that is both distinctive and pleasing. Concave front pillars lengthen and smarten the profile. And distinctive new Ternstedt hardware lends a final touch of custom elegance.

### New Six-Cylinder Motor

The great new six-cylinder valve-in-head engine was developed from more than a hundred motors that were built and tested over a period of four years by Chevrolet engineers. Not only does it develop 32% more power than any previous Chevrolet engine... not only is it sensationally faster and swifter in acceleration—but it performs with a smoothness and quietness of operation that are almost unbelievable in a low-priced automobile.

It idles along in the traffic line with remarkable ease and quietness. It leaps ahead at the signal light like an arrow from a bow. It takes the hills, no matter how steep, with truly astounding ease. And it delivers this amazing performance with an economy averaging better than 20 miles to the gallon of gasoline!

### New Comfort and Handling Ease

But sensational as this performance is—it is matched in impressiveness by the marvelous comfort and handling ease that have been engineered into the chassis. The heavy, rigid, channel steel frame extends beyond the entire length of the body and rests on four semi-elliptic shock-absorber springs—set parallel with the road. The front springs are 36 inches long and the rear springs 54 inches—while all spring shackles are equipped with Alemite fittings. The steering mechanism is designed with ball bearings throughout, with complete lubrication at all points of contact. Brake pedals are correctly spaced for easy and safe manipulation. The two-beam headlights are controlled by a foot button located on the floor boards. And a slender, flat-type steering wheel fits snugly into the hands.

### Come in For Complete Information

We cordially invite you to visit

our showroom and secure complete and detailed information regarding this great new car—which will be ready for delivery beginning January 1st.

### Advance Showings

The Outstanding Chevrolet of Chevrolet History is being displayed in a series of advance showings. The final advance showings are in the cities listed below:

Atlanta, Dec. 18-22, Auditorium—Armory . . . Dallas, Dec. 18-22, Adolphus Hotel, Junior Ballroom . . . Portland, Ore., Dec. 18-22, Public Auditorium.

The ROADSTER . . . . .	\$525
The FLEETON . . . . .	\$525
The COACH . . . . .	\$595
The COUPE . . . . .	\$595
The SEDAN . . . . .	\$675
The Sport CABRIOLET . . . . .	\$695
The Convertible LANDAU . . . . .	\$725
SEDAN DELIVERY . . . . .	\$595
LIGHT DELIVERY CHASSIS . . . . .	\$400
1½ TON CHASSIS . . . . .	\$545
1½ TON CHASSIS WITH CAB . . . . .	\$650

All prices f. o. b. Flint, Michigan

- a Six in the price range of the four!

(Come in today for complete information!)

## WM. RUEHL & CO.

120 North First Street

Phone 1110

QUALITY AT LOW COST