

Questions and Answers

Q—How does the death rate in Illinois compare with such health resort states as California and Florida?
—C.D.G., Alton, Ill.

A—The death rate in Illinois per 1,000 white population for the year 1925 was 11.5; for Florida, 11.8 and for California 13.6.

Q—How does Illinois rank among the states in exports and what are its principal products sold abroad?
—W.E.M., Cairo, Ill.

A—Illinois ranked sixth among the states in exports and was the largest exporter of agricultural machinery, according to federal figures covering the third quarter of 1927. Exports of merchandise for that quarter totaled 65,214,369 as compared with \$58,204,491 for the same quarter in 1926.

Exports of wheat valued at \$17,971,956, ranged first in order of value among the commodities sent from the

state to foreign markets during the three-month period. Exports of lard valued at \$6,991,075, were followed in order by harvesters and binders, \$2,481,010; tractors and parts, \$2,146,665; bauxite, \$1,681,463; cornstarch, \$1,377,069; hams and shoulders, \$1,186,688; canned meats, \$925,213; bacon, \$916,430; sausage casings, \$861,343; iron and steel plates, sheets, skelp and strips, \$844,696; and corn, \$812,309.

Q—Does the Illinois Chamber of Commerce do anything for the agricultural interests of the state, that is, the farmers, or is it strictly a "town and city" organization?
—F.A.S., Urbana, Ill.

A—This organization has an Agricultural Industries division under the guidance of a committee of thirty. Each man on this committee is a specialist in some line in some way allied with farming. C. V. Gregory, editor of Prairie Farmer, is chairman.

Q—How many apples does Illinois produce? Is it much of a producer of commercial apples?
—K.T.S., Waukegan.

A—Illinois is a large producer of apples for the market. For the three years of 1924, 1925 and 1926 this state averaged to ship 6,168 car loads of apples. This does not count the less than car lots or shipments by motor trucks. In 1927 the crop was smaller. Calhoun county is planted up to produce about 1,000,000 barrels a year and is the biggest apple district in the state. Early apples are produced in the hills of southern Illinois, chiefly in Union and Johnson counties. There is in Johnson county a single planting of 10,000 yellow transparent trees, the largest block of this variety in the world.

Q—How many motor cars per person in the United States and does Illinois have more or less than its share?
—T.A.S., Paris, Ill.

A—The total registration of motor vehicles in the United States in 1927 was 23,127,315 or 20,230,429 passenger cars and 2,896,886 trucks and road tractors. The average was one motor vehicle to every 5.13 persons for the country as a whole compared with 5.07 for Illinois. The states with the largest number of cars are: New York, 1,937,918; California, 1,693,195; Ohio, 1,570,734; Pennsylvania, 1,554,915 and Illinois, 1,438,985.

Q—How many airplanes are there in the United States and what state has the greatest number?
—P.K.W., Cairo, Ill.

A—Out of a total of 2,715 airplanes licensed, identified or given numbers by the Aeronautics Branch, Department of Commerce, 456 are in California, 268 in New York and 215 in Illinois. These three states lead in numbers of listed planes. However, this is not the whole story. Growth in airplane development has been so fast that many planes have not been

inspected. A recent report of the aeronautics branch revealed that applications for license had been filed for 4,556 planes in the United States.

What Makes a Grouch?
—Leading psychiatrists, neurologists and sociologists have started a discussion as to what makes the grouchy worker grouchy and how to remove the grouch, thus saving business many thousands of dollars—if they can find the "grouch germ." They will scrutinize the mental workings of the grouch, the kicker, the supersensitive and the idle dreamer at a luncheon under the auspices of the Illinois Society of Mental Hygiene.

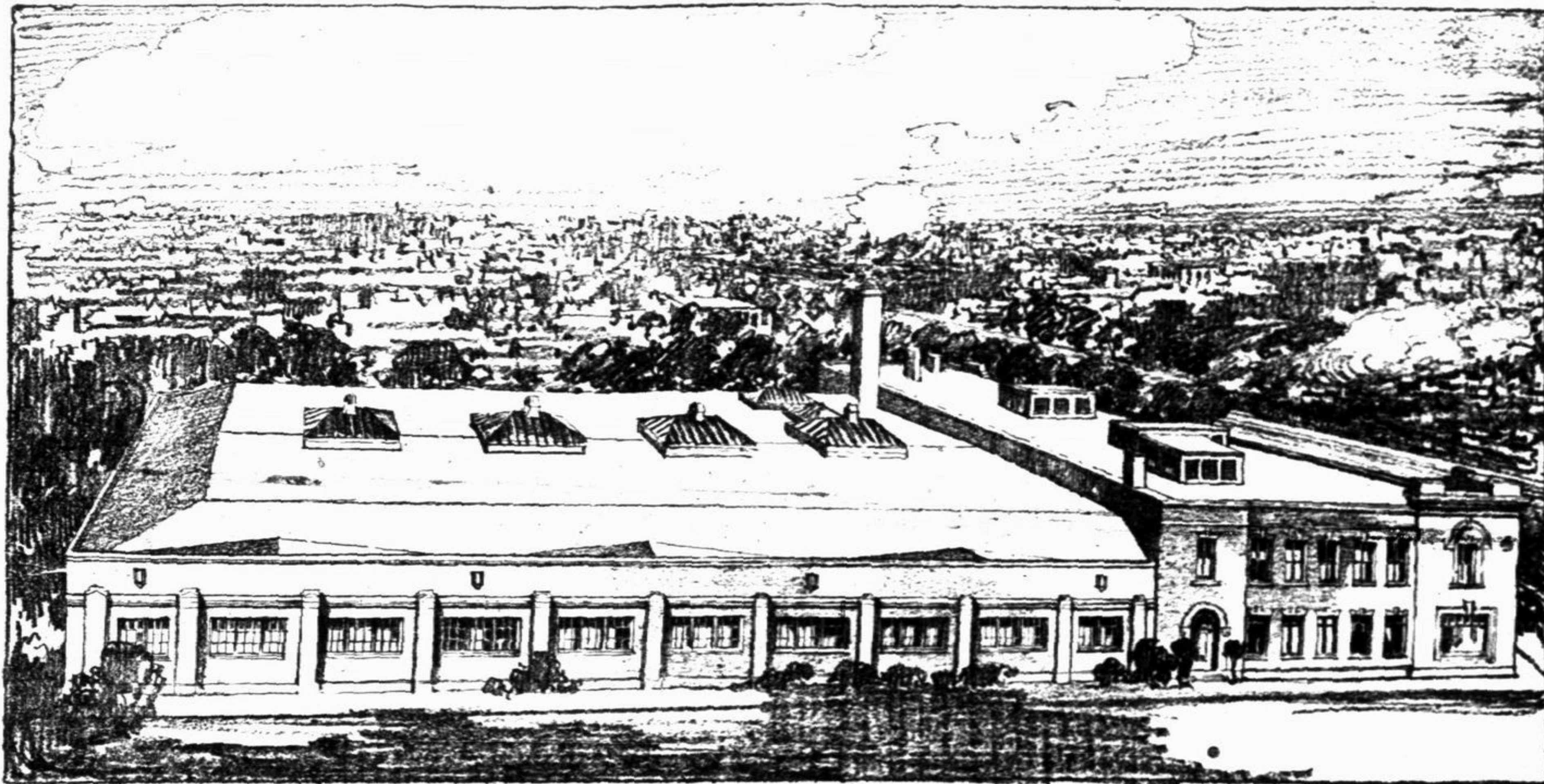
Taking Happiness
The worst phase of modern education, says a roamer and philosopher in The American Magazine, is that it is built upon the assumption that taking is happiness.

EXCELLENT CONCERT GIVEN BY ARION CLUB

Those who attended the excellent program given in the Methodist church last week by the Waukegan Arion Musical and Dramatic club, under the direction of Prof. Charles Cummings report a delightful concert and praise highly the fine work of all who participated. There were numerous encores and the affair was a splendid success in every way.

A Quick Worker
No sooner had an indictment charging pocketpicking been nolle prossed in court against Leon Gethers, Negrom, when he started rifling pockets of persons in the Court House corridor. After a chase through the business district, he was arrested again.

We Grow Thru Service



Increased Demand for Bowman's Milk Makes Necessary Large Addition to Highland Park Distributing Station

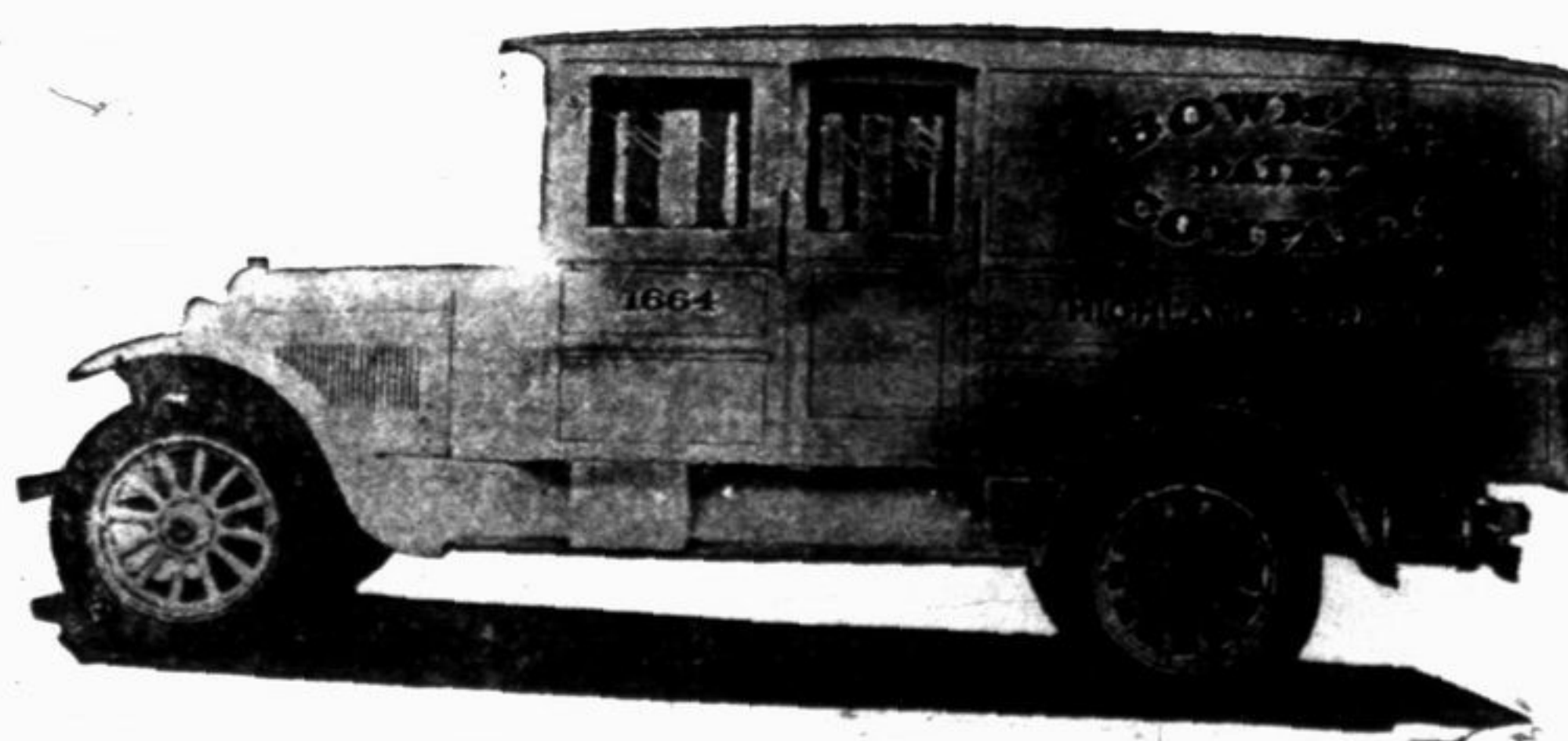
Enlarged quarters now being completed make the Highland Park Branch of the Bowman Dairy Company the largest milk distributing station on the North Shore. Such expansion can mean but one thing — satisfactory service to a large number of customers!

One taste of Bowman's Milk will explain its ever-increasing popularity among the people of Highland Park. The superior flavor of Bowman's Milk is the direct result of the great care we take in bringing it from farm to you.

It is a care we exercise without limit. Trained inspectors stand

guard at every step. Transportation of the milk from the country, pasteurizing, bottling and final delivery are all performed in the most scientific and sanitary manner known.

That is why Bowman's Milk comes to you so rich in goodness, so fresh and so definitely superior in flavor.



Try a bottle of this superior milk today. Only then will you appreciate how delicious it really is. Order from the courteous Bowman Milkman next time he passes by. Or telephone Highland Park 2700. It's a move you will never regret.

BOWMAN DAIRY COMPANY

"THE MILK OF THE SUPERIOR FLAVOR"