

SUNDAY SCHOOL ASS'N CONVENTION, SUNDAY

Excellent Program Planned; Will Be Held at Lake Bluff Union Church

The annual convention of the Deerfield-Shields Township Sunday School association will be held at the Lake Bluff Union church on Sunday afternoon, Oct. 9, 1927, at 3 o'clock. A large attendance of the officers and teachers of all the Sunday schools in the two townships is expected to hear the excellent program which is being provided.

Mrs. Gladys Ames will speak on "How to Get a One Hundred Per Cent Sunday School." Mrs. Ames superintends such a school and so is well qualified to speak on that subject.

Miss Gladys Greenlaw, who has made a study of Sunday school work and is now the director of religious education of the Highland Park Presbyterian church will speak on the subject, "Problems of the Teen Age."

Mr. Antonio Parroni, who was a captain in the Italian army during the World war, will give an address on, "Foreign Missions at Home." Mr. Parroni has studied at the Bible Seminary in New York and is now attending Garrett Biblical Institute at Evanston. He is full of enthusiasm for his work and will have many interesting things to tell about his activities, in the past year, among the Italians of our own community.

Rev. A. P. Johnson the forceful, efficient pastor of the Bungalow Evangelical church, Deerfield will bring a worthwhile message on, "The Consecration of the Sunday School Worker."

All who are connected with religious education are invited to attend this convention, which, with its array of fine talent and appealing subjects will be of special interest to them.

SOILS IN FOREST AREAS HOLD WATER

ABSORB IT MORE RAPIDLY

And Retain It Longer Than In Open Space, Report Says; Facts Are Given

Soils in forested areas will absorb more water and will not hold it longer than the soils in open areas unprotected by any kind of vegetation, says the Forest Service of the United States Department of Agriculture. In the formulation of any comprehensive and long-term plans for the control of floods, it is declared, it is important that this fact be considered and that the scientific data on the relation of forests to soil water be thoroughly reviewed.

Notable among the studies which have demonstrated the absorptive and retaining power of areas covered with forest, is the investigation made by Prof. I. T. Bode of the Department of Forestry, Iowa State college. Professor Bode made his study on four small sites in the "Backbone" State park, Delaware county, Iowa. Two of these sites had heavy timber growth, with a good layer of forest litter and decaying leaves, while the other two had been denuded of timber.

Content of Water

It was found that the average content of water of the soils in the timber-covered area as well as both maximum and minimum contents were above those for soils on the unprotected area. The soils on the timber-covered area were of a more sandy nature than those on the unprotected area in the sites selected. The greater absorptive power of the soils in the area covered with timber was apparent, while the run-off of rainfall was found to be greater on the open slopes.

Investigations of the seepage of soil water on these sites showed that this was most rapid on the open slopes following a rain, while the seepage was greater in quantity, steadier, and distributed throughout a longer period of time in the area covered with timber.

Affects Stream Flow

By thus absorbing more water, by holding it longer and by allowing it to seep out more gradually, areas covered with forest exert a considerable influence in the regulation of stream-flow, tending to prevent high water and flooding following periods of heavy rainfall on the one hand, and drying up of streams during the dry seasons on the other.

Since in even a limited area the removal of the forest cover from one of the slopes had such a marked effect, says the Forest Service, the influence of forest over large areas in maintaining more uniform stream-flow must be regarded as an exceedingly important one.

TRANSFORMATION

There is a movement on the part of the Good Citizenship bureau to hide that old bugaboo, budgeting, under the name of Family Financing. But what is the difference between a bugaboo and a bugbear?—Woman's Home Companion.

There is a general feeling that there are too many laws, and all the inmates of the jails will say so anyway.

N. S. THEATRE GUILD MEMBERSHIP DRIVE

Chairmen in Each of Towns Represented; Glencoe Added This Year

The annual membership campaign of the North Shore Theater guild is now under way.

Mrs. Sherman Aldrich of Hubbard Woods, as general chairman of the campaign committee. Town chairmen are Mrs. Leslie Parker of Evanston, Mrs. Robert Stoddard of Wilmette, Mrs. Harry E. Weese of Kenilworth, Mrs. Merritt Lum of Winnetka, Mrs. Alan Wolff of Highland Park, Mrs. Dorothy Ross of Glencoe and Mrs. Alfred McCullough of Lake Forest.

David Owen, now director of the guild, who succeeds Alexander Dean, spoke at a recent meeting of the committee, outlining his plans for the season and discussing the work he has done with dramatics at the University of Michigan. John Allen Stewart, publicity director and business manager, announced the schedule for the season's productions and other plans. Membership quotas, he reported, have been assigned the various towns and a substantial growth is expected.

The North Shore Theater guild, so far as is known, is the only Little Theater group in America, which travels every season on a definite circuit. Glencoe has been added to the circuit this season, making six towns, from Evanston to Lake Forest, in which the guild presents its several plays each season. The total membership in the guild is now approximately 1,500.

The officers of the guild are: president, Laird Bell; vice-president, Samuel S. Otis; secretary, Mrs. Frederick Dickson; and treasurer, J. William Mackay.

HIGHWOOD LOSES GAME TO SOUTH TOWN A. C.

Mud and Rain Jinx to Home Team; Will Play Bellfield Billiards Next

Although playing hard football the Highwood team lost to the Southtown A. C. 6-0.

The game was even throughout. In the first half neither team could gain. The field was a sea of mud and at the half it looked as though the game would finish scoreless. However in the third quarter the Chicago boys blocked Highwood's punt and it resulted in a touchdown for them. They failed to kick goal for the extra point and the score remained 6-0 to the finish.

A protest was made Monday at the Mid-West league meeting and was accepted by the chairman of the board of appeals. If neither team is in the winning at the end of the season the game will be played over. The protest was made when the Southtown A. C. used a disqualified player and the official failed to penalize them.

Next Sunday Highwood will play the Bellfield Billiards at Highwood field. The kickoff will be at 2:30 p.m.

The boys are all enough interested in agriculture so they will consent to attend the corn huskings.

HUB IS BROADCASTING NORTHWESTERN GAMES

Beginning with the Northwestern-South Dakota game of last Saturday The Hub, Henry C. Lytton & Sons, inaugurated a policy of broadcasting all of the Northwestern home games direct from Dyche stadium over WBBM. This move is just another instance of The Hub's endeavor to keep abreast with college men and college life. Only last month the new Lytton College Shop was opened in the downtown store. Six times larger than the original college shop it is the largest and finest shop of its kind in the world.

The Evanston Shop is the favorite shop of the Northwestern men—because from the first as now it has consistently allied itself with the interests of the Northwestern men.

As announced during the Northwestern-South Dakota game a schedule of the important football games of this season will be mailed on request. Just drop a letter or a card address to the Lytton College Shop, State and Jackson, Chicago.

The next period of Hub broadcast will be the Northwestern-Utah game at 1:45 p.m., Saturday, October 8th.

BIG CIRCUS USES CHEVROLET TRUCKS

Seventy-Five of Them Transport Entire Show From Place to Place

When the circus comes to town—if it happens to be Downie Bros. Wild Animal Circus—it comes by Chevrolets. Seventy-five of them—sturdy one-ton trucks—make up the train that transports this entire show, wild animals and all, from the time in early spring it leaves its winter quarters at Harve de Grace, Md., until it returns there late in autumn.

Andrew Downie, head of the show, fixed on Chevrolets after trying other methods of transportation during his 42 years in the show business. He experimented with horses and wagons, canal barges, steam tractors hitched to trailers, motor trucks and railway circus trains.

Now the 75 Chevrolets carry the entire show, consisting of 200 clowns, musicians, tight-rope walkers and other employes, as well as lions, tigers, the "big top," side shows and complete equipment everywhere on the circuit from inaccessible mountain hamlets to seaside towns. One truck used by General Manager Harron as a summer home provides him with a residence en route. Another carries a complete electric lighting plant.

Last year the circus caravan traveled 7,000 miles over roads of every sort, up mountain trails and dragging in and out of muddy circus lots.

Not one spring was broken and no trouble was experienced with real ends, or gears, or clutches, according to statement by the chief mechanic, despite the grueling test that each truck underwent and despite the fact that each truck carried an average load of more than 4,000 pounds.

Some folks complain that they can't eat their meals without getting spots on their clothes, but they can always wear a raincoat.

A Word to Women About Kitchens

Your kitchen is your workshop. You spend from two to four hours daily — perhaps more—in your kitchen. Is it attractive—is it arranged so as to make your work as convenient and pleasant as possible?

Step in our shop and let us show you a spotless, snow-white, glistening kitchen sink—made by Kohler and armored with the famous Kohler enamel. You will see at once how it would brighten your kitchen and make your work more pleasant.

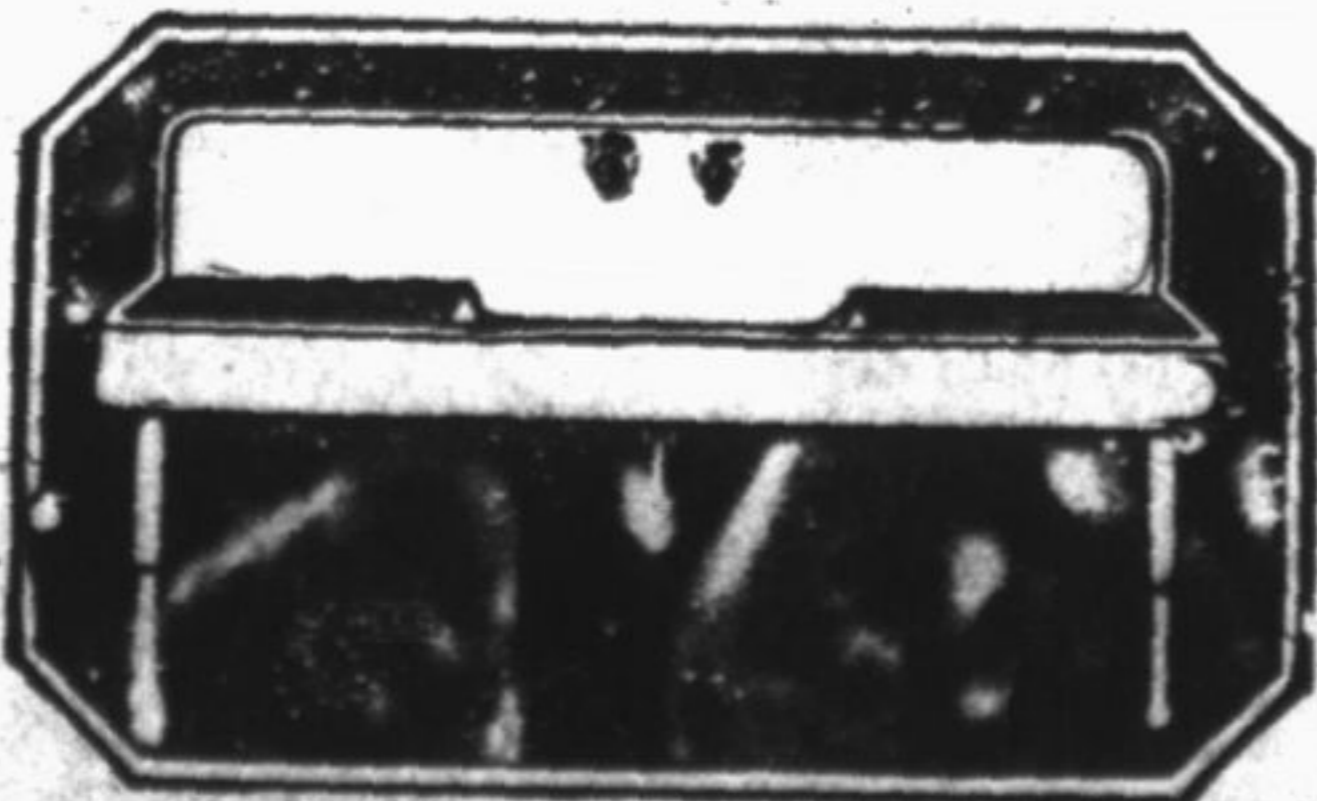
Our services are at your disposal for consulting about home sanitation problems and especially in planning the arrangement of bathrooms and kitchens in new homes. Drop in any time.

Below is illustrated one type of Kohler enameled kitchen sink. The entire fixture is cast in one piece, giving strength and doing away with dirt-catching crevices. The enduring enamel protects its beauty and insures long service.

Vic J. Killian Inc.

— Service Stations —

390 Central Avenue - Phone Highland Park 2101
HIGHLAND PARK WINNETKA
917 Waukegan Avenue 874 Center Street
Phone Highland Park 1248 Phone Winnetka 1260



Lincoln Market
519 Central Avenue

Phone Highland Park 3140

Phone in your order and call for it later.

- CUDAHY'S PEACOCK SLICED BACON, lb 39c
- SHORT LEG OF FINEST SPRING LAMB, lb 30c
- FRESH DRESSED SPRING CHICKENS, lb 35c
- OUR BEST SMOKED HAMS, half or whole, lb ... 25c
- FRESH MEATY SPARE RIBS, lb 18c
- LEAN BOILING BEEF, lb 12 1/2c
- JUICY MILWAUKEE RED HOTS, lb 25c
- DELICIOUS BREAKFAST PORK SAUSAGE
 - small links, lb 25c
- GROGAN'S FAMOUS BONELESS BRISKET
 - CORNED BEEF, lb 28c
- CHOICE LAMB STEW, lb 15c
- VERY BEST LOIN LAMB CHOPS, lb 45c
- FRESH HAMS, for roasting, half or whole, lb 24c

Sanitary refrigeration is important at all times. Our refrigerating equipment is the last word in modern health insurance. When you purchase meats from us, you know that your family will receive only the best.

—If Quality Counts, We Will Merit Your Patronage—

Well Rotted Manure

(Horse or Cow)

AND BLACK DIRT

FRANK SILJESTROM

152 North First Street, Highland Park
Phone Highland Park 65

MAN FATALLY HURT IN AUTO ACCIDENT

Another Badly Hurt in Crash Near Fox Lake Sunday Morning

One man was believed to be fatally injured and another suffered a fractured arm when a motorist jammed into the rear of a stalled car early Sunday morning at Fox Lake.

The man who is dying is James McGillin, 4531 Paulina street, Chicago, who has a fractured skull and possibly other injuries. He is at the Victory memorial hospital.

McGillin, with E. B. Cowler, 4334 N. Winchester street, Chicago, and two women were in a Maxwell sedan that stuck in the mud at the end of the pavement out of Fox Lake. That was at 1:30 o'clock in the morning.

They were making preparations to get their car out when a machine driven by Swan Johnson, 2543 North Kirkpatrick avenue, Chicago, crashed into it. Johnson was accompanied by Arvid Holmquist, who lived with him. Thomas Burnett, deputy in that vicinity, took charge of the wreck sending McGillin to the office of Dr. Wariner at Antioch where the Holland ambulance picked him up and took him to the Victory Memorial hospital at Waukegan.



Only

\$1.55

Round Trip

SPEND SUNDAY, OCT. 9th, IN

MILWAUKEE

These low fare excursion tickets good only on SPECIAL TRAIN leaving Highland Park at 8:10 a.m. Returning Special Train leaves Milwaukee 7:00 p.m.

WHAT TO SEE IN MILWAUKEE

Spend a most delightful day sight-seeing and visiting your friends in Wisconsin's Metropolis. See beautiful Washington Park with its wonderful Zoological Gardens—Enjoy rides on the observation motor buses over the splendid boulevards, through the attractive residential and business districts—Visit the famous Layton Art Gallery and Public Museum (free admission on Sunday). Matinees at the theatres.

Children half fare No baggage checked
Don't miss this splendid chance to enjoy a grand day's outing. For further particulars apply to agent.

Chicago & North Western Ry.